

BAUGHMAN COMPANY, P.A.
 SURVEYING & ENGINEERING
 316/262-7271 • 330 LAURA • WICHITA, KANSAS 67211

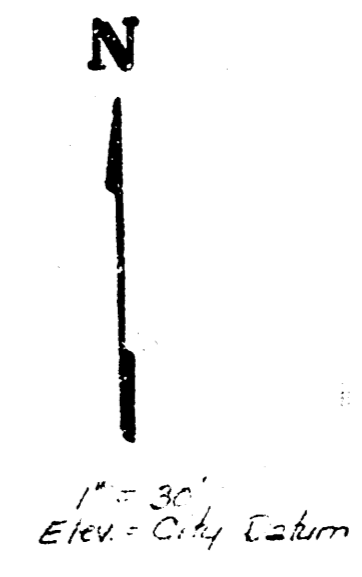
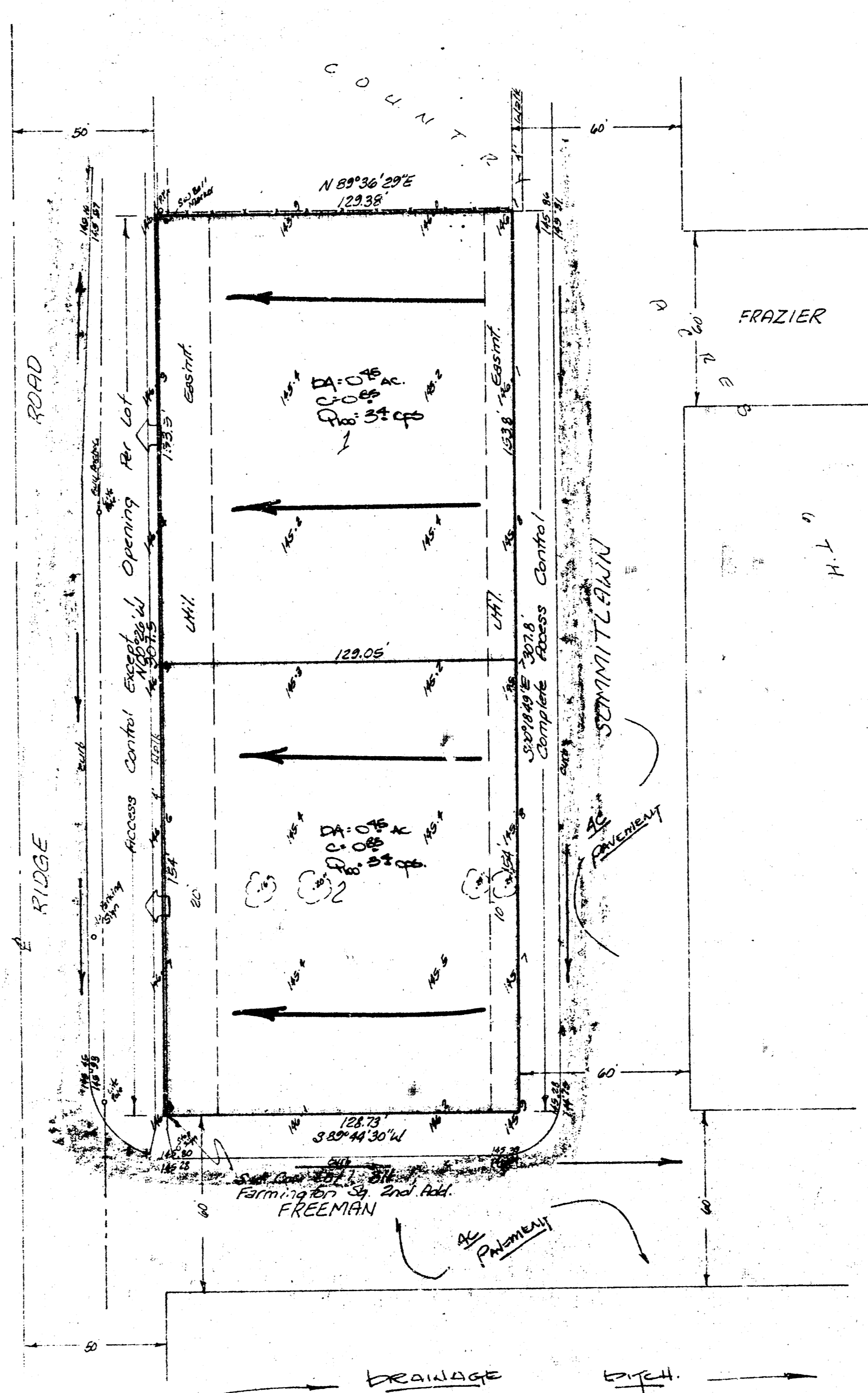
CONFIRMATION MEMO

PROJECT: NIEDENS 5TH ADDITION
 DATE: 12/13/83
 TO: Chris Breitenstein
 FROM: N. Brent Wooten
 REFERENCE: Drainage plan

Final plat is scheduled for subdivision for Dec. 22, 1983.
 The two lots will drain west to Ridge Road thru either drives or flumes. Ridge Road drains both north to an inlet located at Newell and south to Freeman which drains east as indicated.

NIEDENS 5TH ADDITION
 (Drainage)

drainage plan
 12/1/83



BENCH MARK:
 0' out, N end of radius of
 curb at NE Cor. of Ridge
 & Freeman
 Elev. = 145.93 City Datum

SKETCH PLAT
NIEDENS 5TH ADD'N.

Lots 1, 2, 3 and 4, Block 1, Farmington
 Square 2nd Addition, Wichita, Kansas

125, INC. Marvin Niedens, President

NOTE - Lots will drain west
 to Ridge Road thru drives
 or flumes.

BAUGHMAN COMPANY, P.A.
 SURVEYING & ENGINEERING
 316/262-7271 • 330 LAURA • WICHITA, KANSAS 67211