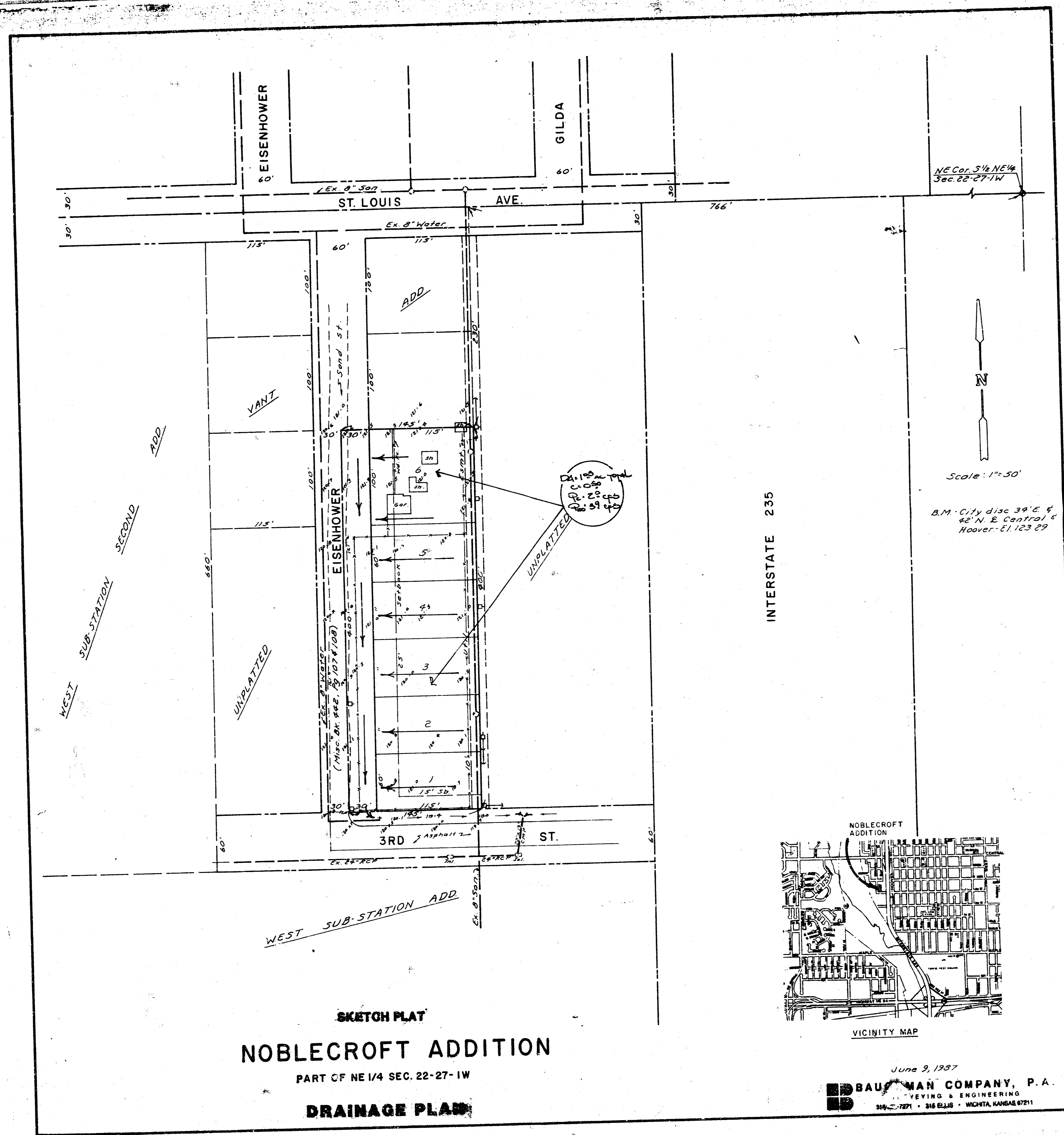


NOBLECROFT ADDITION (Drainage)



NE Cor. 5/4 NE 1/4 Sec. 22-27-1W

B.M. City disc 39'E & 40' N. E. Control & Hoover - E1 123 29

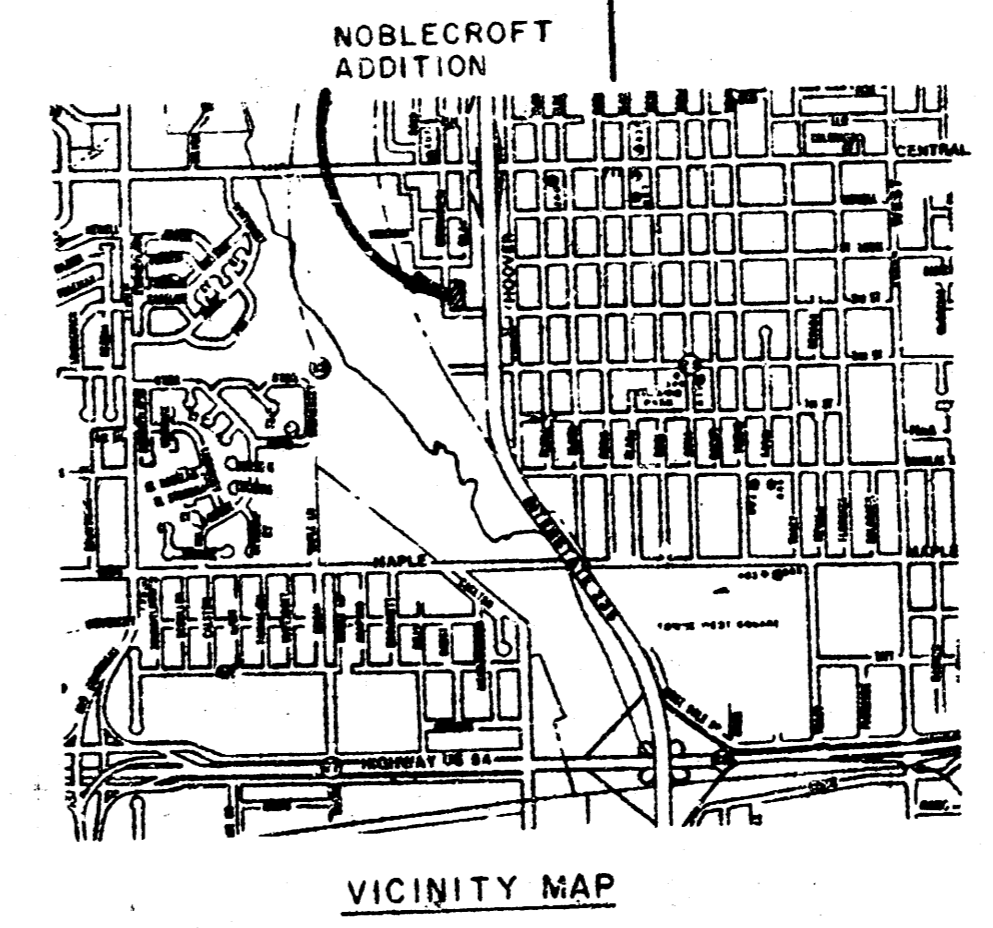
INTERSTATE 235

SKETCH PLAT

### NOBLECROFT ADDITION

PART OF NE 1/4 SEC. 22-27-1W

**DRAINAGE PLAN**



June 9, 1937  
**BAUSMAN COMPANY, P.A.**  
 SURVEYING & ENGINEERING  
 515 W. 7271 - 3RD ELLIS - WICHITA, KANSAS 67211