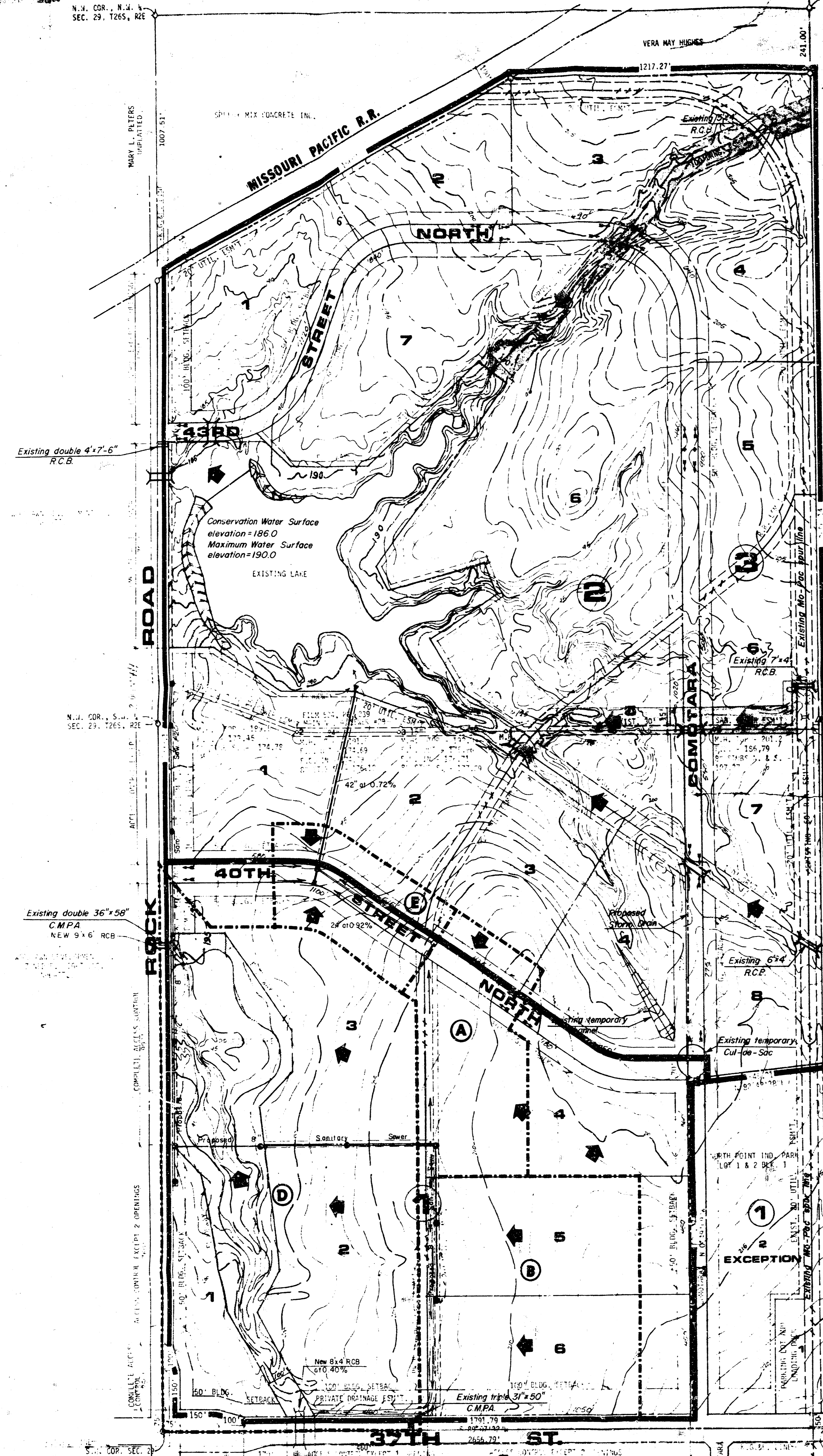


N.W. COR. S.W. 1/4
SEC. 29, T26S, R2E

N.E. COR. S.W. 1/4
SEC. 29, T26S, R2E

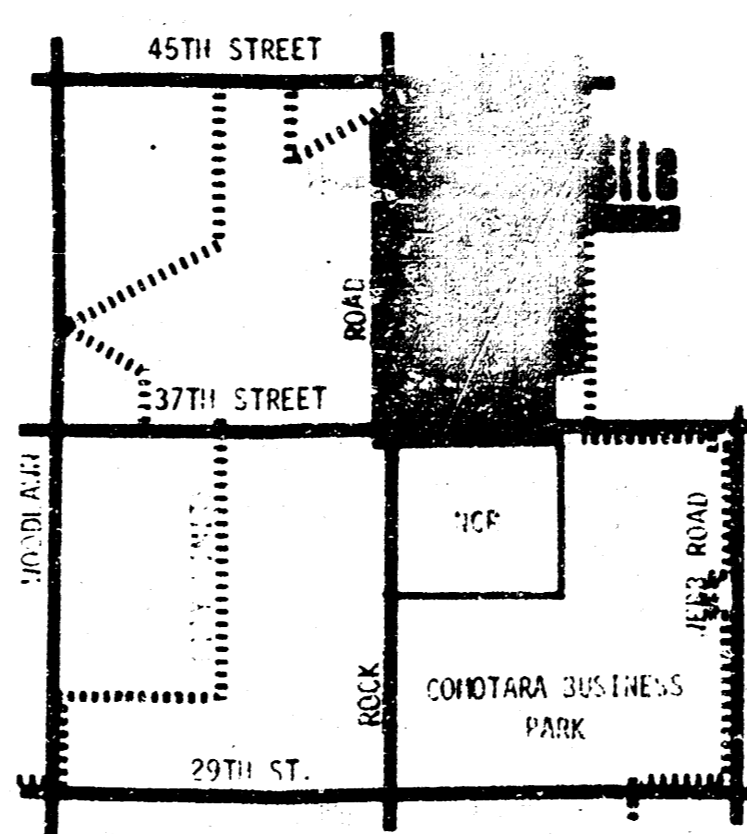


④
Area = 67
C = 0.5
T_c = 30 minutes
Q = 228 c.f.s.

③
Area = 92 acres
C = 0.5
T_c = 30 minutes
Q = 313 c.f.s.

②
Area = 82 acres
C = 0.5
T_c = 30 minutes
Q = 279 c.f.s.

DATE: A PRELIMINARY DRAINAGE PLAN
BY: M.S. HAZEN ENGINEERING
M.H. #1 10/1/77
M.H. #2 10/1/77
M.H. #3 10/1/77
M.H. #4 10/1/77
M.H. #5 10/1/77



LOCATION MAP

①
Area = 60.3 acres C = 0.5
T_c = 30 minutes
Q = 297.2 c.f.s.

NORTH POINT INDUSTRIAL PARK 2ND
(Drainage)

North Point Industrial Park 2
Q = CIA

Code	Area (Acres)	Area (Acres)	T _c (min)	C	L _c	L ₁₀	L ₁₀₀	Q ₂	Q ₁₀	Q ₁₀₀	Flow Area	Slope
I (A)	8.8		20	0.7	3.63	6.44	8.03	22.36	33.51	49.66	34'	0.02%
II (E)	6.6		15	0.7	4.06	6.08	8.98	18.76	28.09	41.49	40'	0.02%
	15.4		20	0.7	3.63	5.44	8.03	39.13	58.64	86.56	48'	0.36%
III (C)	60.3		30	0.726	9.92	4.56	9.79	171.61	199.63	297.25	75'	0.4%
IV (B)	18.9		36	0.7	2.51	3.95	5.89	33.2	52.26	77.92	75'	0.4%
V (O)	44.8		18	0.7	3.78	5.67	8.37	118.54	117.81	222.48	84'	0.4%
	184	86	0.7	2.51	3.95	5.89	217.87	342.86	511.25	1076	84'	0.4%

Notes:
1. Design Drainage to North
2. Design to 40th St
3. Design to 37th St
4. Design to 29th St



NORTH POINT INDUSTRIAL PARK 2ND DRAINAGE PLAN