

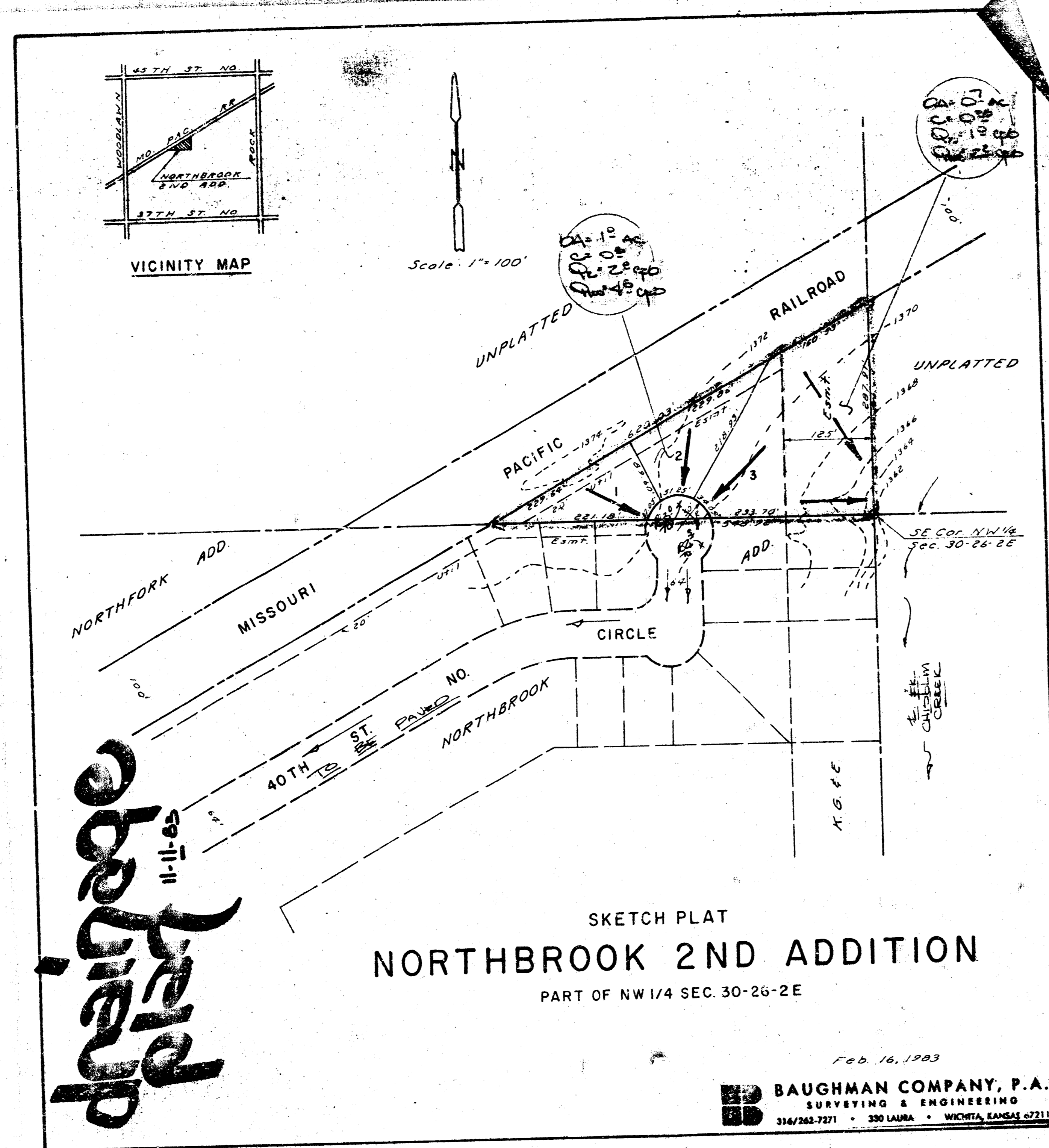
NORTHBROOK 2ND ADDITION  
(DRAINAGE)

**BAUGHMAN COMPANY, P.A.**  
SURVEYING & ENGINEERING  
314/262-7271 • 330 LAURA • WICHITA, KANSAS 67211

**CONFIRMATION  
MEMO**

PROJECT NORTHBROOK 2ND ADDN  
JOB NO. \_\_\_\_\_  
TO CHRIS EISENBERG  
FROM ERENT HOOTEN  
REFERENCE DRAINAGE PLAN

DATE 11-14-83  
COPIES TO \_\_\_\_\_



FINAL PLAT IS SCHEDULED FOR SUB-  
DIVISION FOR NOV. 21, 1983.

LOTS WILL BE RESIDENTIAL WITH A RUN OFF  
FACTOR OF 0.50. LOTS WILL BE DRAINED TO  
40TH ST. CIRCLE AS INDICATED. A PORTION  
OF LOT 3 (KGE EAST) WILL CONTINUE TO DRAIN  
EAST INTO A BRANCH OF THE EAST FORK OF THE  
CHADWICK CREEK. PROPOSED CURB GRADES  
ARE INDICATED FOR THE STREET AS PER PLANS.  
CONTOUR LINES ARE IN W/S.

PAGE OF \_\_\_\_\_