

NOTES

BENCHMARK: R.R. SPIKE IN POWER POLE ON THE WEST SIDE OF WOODLAWN AT 28TH STREET NO. ELEV. 188.10 CITY DATUM.

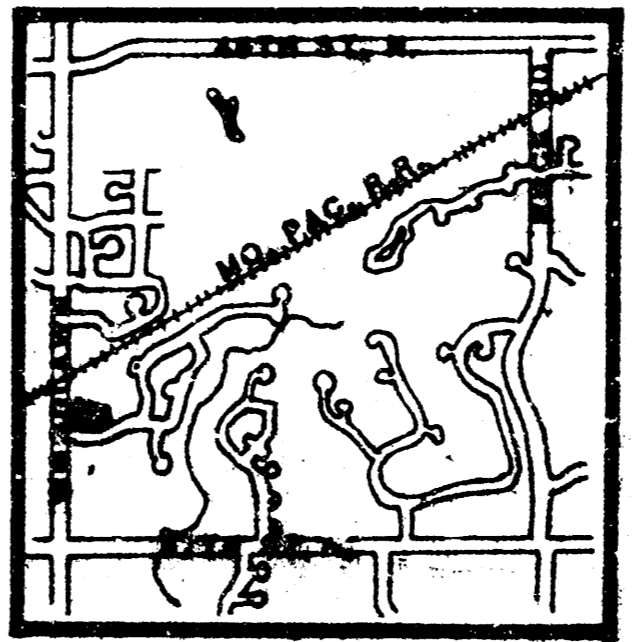
A DRAINAGE CONCEPT PLAN SHALL BE PREPARED BY M.K.E.C. AND SUBMITTED TO CITY ENGINEER.

M.H. PAD ELEVATIONS- LOTS 2-9 AND 14-18. ELEV. 1375. M.S.L. LOTS 1,10-13,19 & 20. ELEV. 1371M.S.L.

BUILDING SETBACKS ARE AS PER NORTHFORK C.U.P. (D.P. - 110)

EXIST. CONTOURS ARE AT 1' INTERVALS, CITY DATUM.

| DRAINAGE AREA | AREA (SQ.FT.) | AREA (ACRES) | C | i ₂ | i ₁₀₀ | Q ₂ | Q ₁₀₀ | Discharge (100 yr.) | Up Set D.M.S. | Pipe Size | Inlets (Length) | Comments |
|---------------|---------------|--------------|------|----------------|------------------|----------------|------------------|---------------------|---------------|-----------|-----------------|---------------|
| I | 1.8 | | 0.55 | 0.75 | 20 | 3.33 | 6.53 | 2.1 | 6.1 | 0.6 | 10' | L = 6' 0" |
| II | 0.2 | | 0.55 | 0.75 | 20 | 5.33 | 6.53 | 1.5 | 3.8 | 0.6 | 15' | L = 6' 0" |
| III | 1.7 | | 0.55 | 0.75 | 20 | 3.33 | 6.53 | 3.1 | 6.1 | 0.6 | | |
| | 4.2 | | 0.55 | 0.75 | 20 | 3.33 | 6.53 | 7.7 | 20.0 | 0.6 | 30' | DUP'S 1875-80 |



SCALE: 1" = 50'

FORMERLY LOT 1, BLK., NORTHBROOK ADD.

NORTHBROOK 2ND. ADD. DRAINAGE & UTILITY PLAN

MID-KANSAS ENGINEERING CONSULTANTS PA
3500 NORTH ROCK ROAD
BUILDING #800
WICHITA, KANSAS 67226
636-5566

February 15, 1989

Vicky Wang
Engineering Department
455 N. Main, 7th Floor
Wichita, KS 67202

Reference: Northbrook Meadow
Drainage Plan

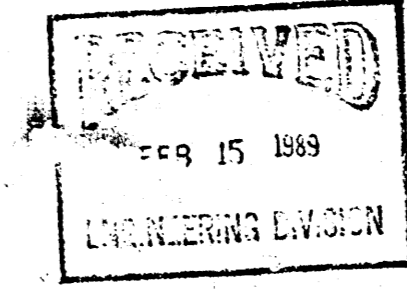
Dear Vicky:

Here is the drainage plan for the referenced project. All storm sewer is existing in this area. Included is the Drainage Plan which was done for the original plat of Northbrook. The system was built different from that shown on the Northbrook plan, but analysis shows it is adequate.

MID-KANSAS ENGINEERING CONSULTANTS, P.A.

Greg Allison
Greg Allison, P.E.

GA/vh



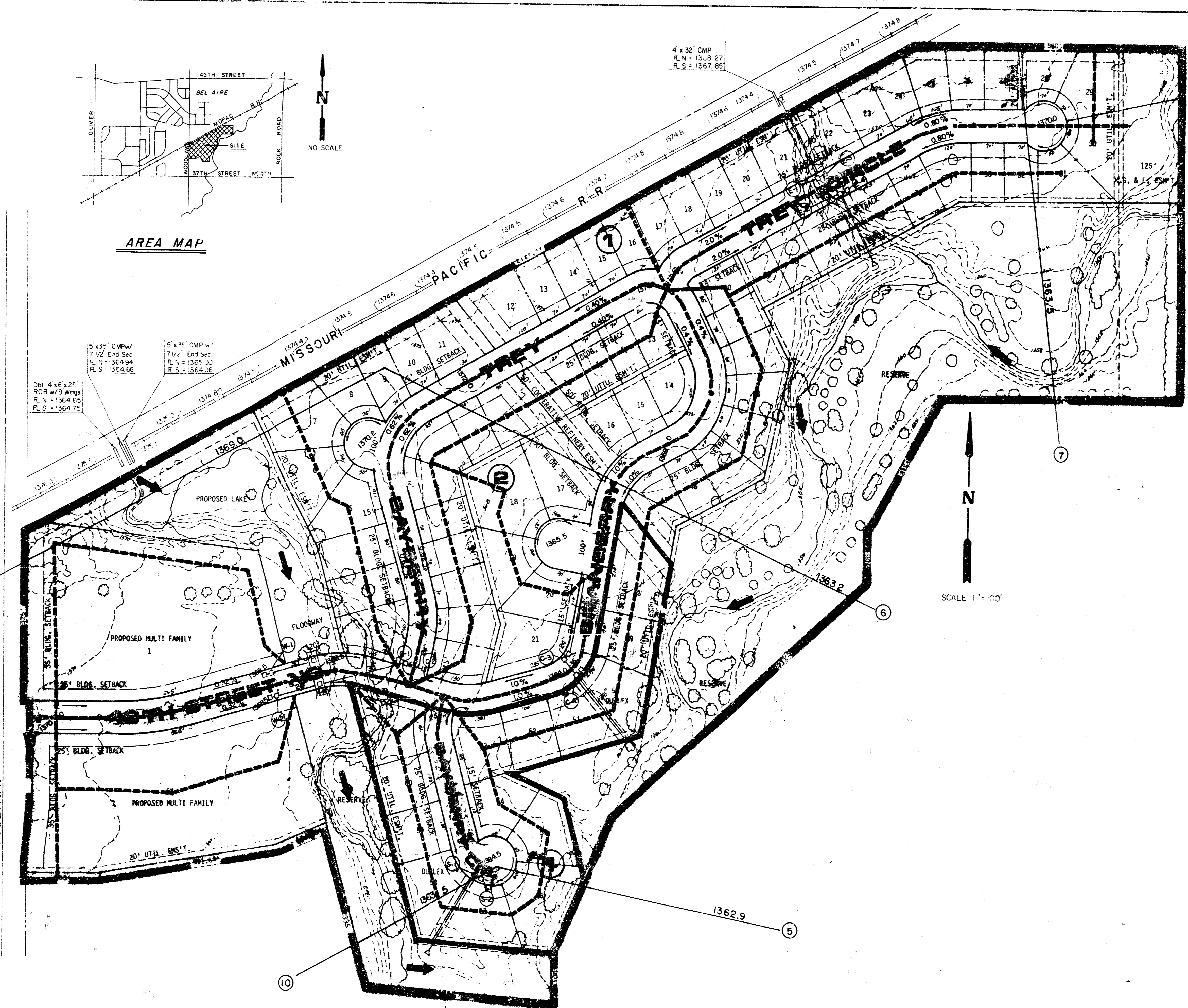
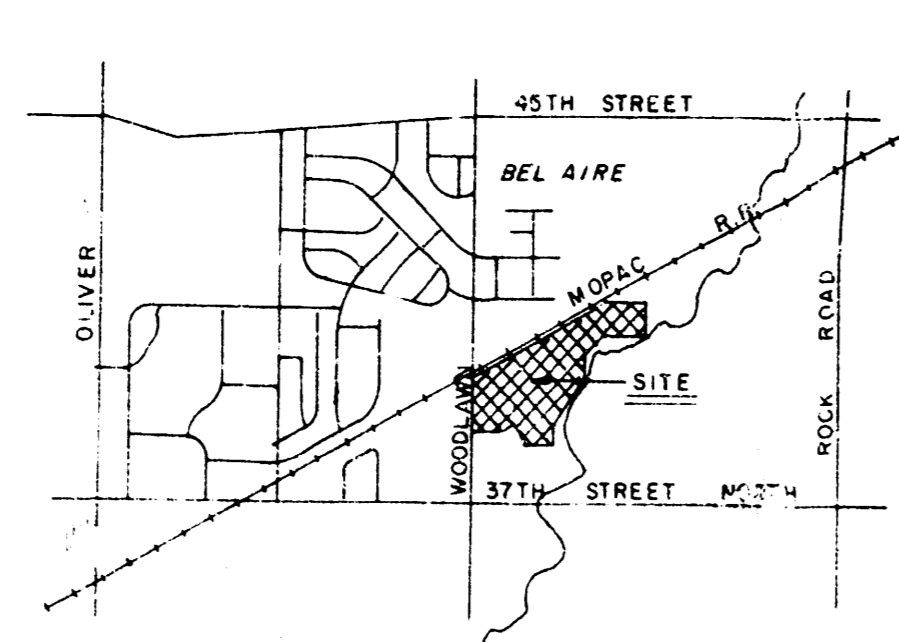
MID-KANSAS ENGINEERING CONSULTANTS PA
(316) 636-5566 FAX (316) 636-4126



3500 N. ROCK ROAD #800
WICHITA, KANSAS 67226

| Node | Ave. Street Slope (Prelim. Proposed) | T _c | Area | Area Accn. | C | i ₂ | i ₁₀₀ | Q ₂ | Q ₁₀₀ | Discharge (100 yr.) | Up Set D.M.S. | Pipe Size | Inlets (Length) | Comments |
|------|--------------------------------------|----------------|-------------|------------|------|----------------|------------------|----------------|------------------|---------------------|---------------|-------------|-----------------|----------------------------|
| C-1 | 0.62 | 20 | 4.15 | | 0.55 | 3.63 | 8.03 | 8.23 | 18.32 | | | | 8' | |
| C-2 | 0.62 | 20 | 2.36 | 6.51 | 0.6 | 3.63 | 8.03 | 5.14 | 11.37 | | | 8" @ 0.20% | 8' | (8 crs. to C-3 on 100 Yr.) |
| C-3 | 1.10 | 18 | 5.3 | | 0.6 | 3.78 | 8.37 | 13.43 | 29.69 | 1364.8 | | 30" @ 0.24% | 12'-8" | |
| C-3A | | | (1.9 - 3.4) | | | | | 12.0 | 25.6 | | | | | |
| C-4 | 1.10 | 18 | 2.7 | | 0.6 | 3.78 | 8.37 | 7.7 | 17.1 | | | 21" @ 0.44% | 8' | |
| | | | | | | | | 6.1 | 13.6 | 1363.0 | | 36" @ 0.54% | 12' | |
| W-1 | | 15 | 3.2 | | 0.75 | 4.06 | 8.98 | 9.7 | 21.6 | | | 30" @ 0.26% | 16' | |
| W-2 | | 18 | 1.7 | | 0.75 | 3.78 | 8.37 | 4.8 | 10.7 | | | 24" @ 0.23% | 8' | |
| S-1 | 0.44 | 15 | 0.74 | | 0.6 | 4.06 | 8.98 | 1.8 | 3.98 | 1365.3 | | | | |
| S-2 | 0.44 | 15 | 1.10 | 1.84 | 0.6 | 4.06 | 8.98 | 2.68 | 5.93 | 1365.3 | | | | |
| E-1 | 1.80 | 15 | 1.46 | | 0.55 | 4.06 | 8.98 | 3.26 | 7.21 | | | | 5' | |
| E-2 | 1.80 | 15 | 0.81 | | 0.6 | 4.06 | 8.98 | 1.97 | 4.36 | | | | 4' | |
| E-3 | 0.8 | 15 | 2.3 | | 0.55 | 4.06 | 8.98 | 5.13 | 11.35 | | | | 24" @ 0.20% | 8' |
| E-4 | 0.8 | 15 | 1.2 | | 0.6 | 4.06 | 8.98 | 2.9 | 6.4 | 1363.4 | | | 18" @ 0.28% | 5' |

ALL INLETS ARE IN SIMP. CONDITION
1.2 - 1.6 cfs/lf



LEGEND

- ① NODE IDENTIFICATION NUMBER
- INLET
- ▽ OUTLET
- 0.32% STREET FLOW & GRADE
- ➔ 100 YEAR FLOOD ROUTING
- 1364.0 CENTERLINE ELEV
- SUB-CATCHMENTS
- ② ③ FEMA DESIGN WATER SURFACE

NORTHBROOK

DRAINAGE PLAN

FEBRUARY 1983

MID-KANSAS ENGINEERING CONSULTANTS PA 862-6561
240 NORTH ROCK ROAD SUITE 130
WICHITA KANSAS 67208

ONE OF ONE