

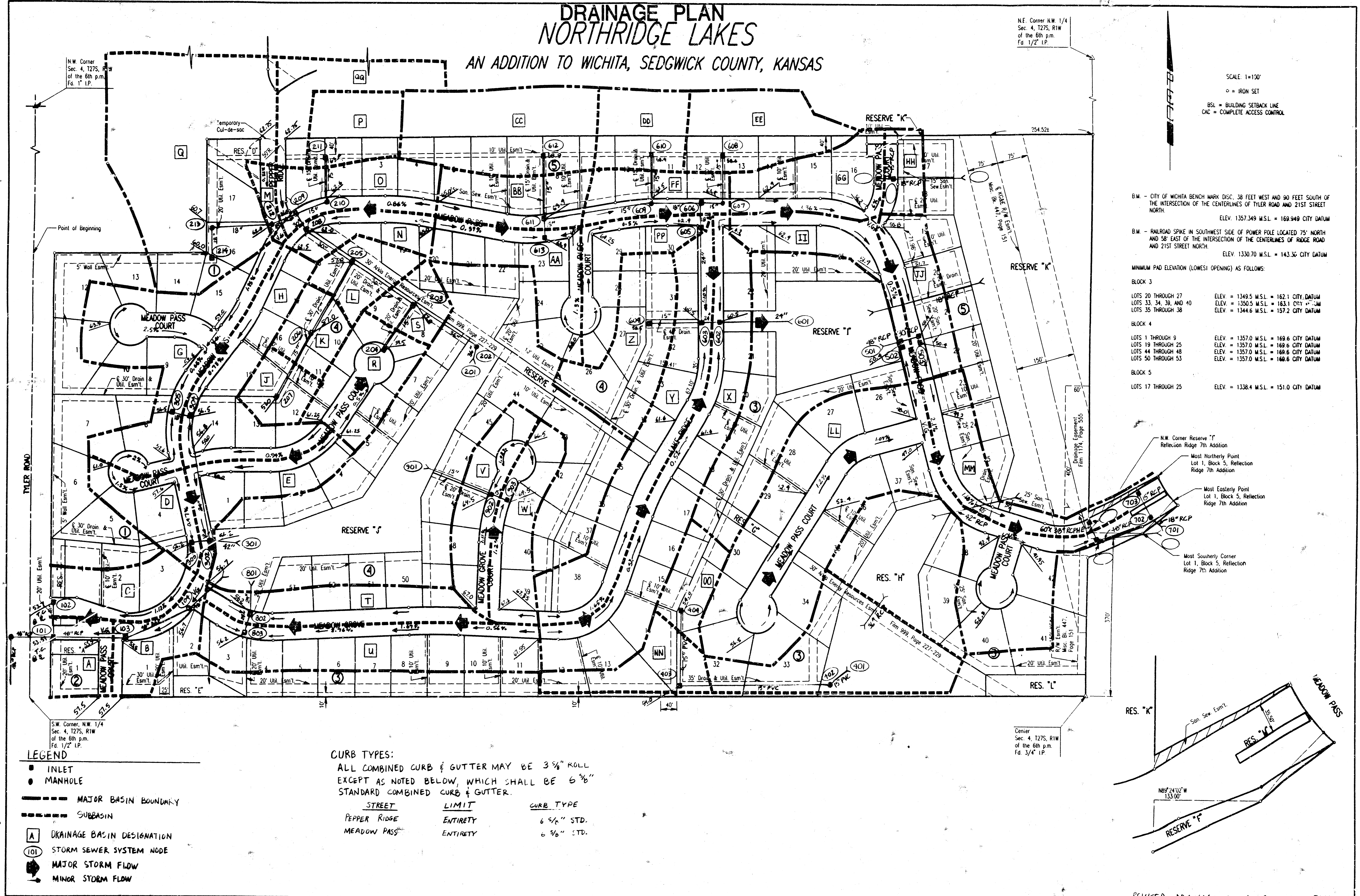
DRAINAGE PLAN NORTHRIDGE LAKES

AN ADDITION TO WICHITA, SEDGWICK COUNTY, KANSAS

N.E. Corner N.W. 1/4
Sec. 4, T27S, R1W
of the 6th p.m.
Fd. 1/2" I.P.

N.W. Corner
Sec. 4, T27S, R1W
of the 6th p.m.
Fd. 1" I.P.

SCALE: 1"=100'
○ = IRON SET
BSL = BUILDING SETBACK LINE
CAC = COMPLETE ACCESS CONTROL



B.M. - CITY OF WICHITA BENCH MARK DISC. 38 FEET WEST AND 90 FEET SOUTH OF THE INTERSECTION OF THE CENTERLINES OF TYLER ROAD AND 21ST STREET NORTH.
ELEV. 1357.349 M.S.L. = 169.949 CITY DATUM

B.M. - RAILROAD SPIKE IN SOUTHWEST SIDE OF POWER POLE LOCATED 75' NORTH AND 58' EAST OF THE INTERSECTION OF THE CENTERLINES OF RIDGE ROAD AND 21ST STREET NORTH.
ELEV. 1330.70 M.S.L. = 143.30 CITY DATUM

MINIMUM PAD ELEVATION (LOWEST OPENING) AS FOLLOWS:

BLOCK 3
LOTS 20 THROUGH 27 ELEV. = 1349.5 M.S.L. = 162.1 CITY DATUM
LOTS 33, 34, 39, AND 40 ELEV. = 1350.5 M.S.L. = 163.1 CITY DATUM
LOTS 35 THROUGH 38 ELEV. = 1344.6 M.S.L. = 157.2 CITY DATUM

BLOCK 4
LOTS 1 THROUGH 9 ELEV. = 1357.0 M.S.L. = 169.6 CITY DATUM
LOTS 19 THROUGH 25 ELEV. = 1357.0 M.S.L. = 169.6 CITY DATUM
LOTS 44 THROUGH 48 ELEV. = 1357.0 M.S.L. = 169.6 CITY DATUM
LOTS 50 THROUGH 53 ELEV. = 1357.0 M.S.L. = 169.6 CITY DATUM

BLOCK 5
LOTS 17 THROUGH 25 ELEV. = 1338.4 M.S.L. = 151.0 CITY DATUM

- LEGEND**
- INLET
 - MANHOLE
 - MAJOR BASIN BOUNDARY
 - - - SUBBASIN
 - A DRAINAGE BASIN DESIGNATION
 - 101 STORM SEWER SYSTEM NODE
 - MAJOR STORM FLOW
 - MINOR STORM FLOW

CURB TYPES:
ALL COMBINED CURB & GUTTER MAY BE 3 3/8" ROLL EXCEPT AS NOTED BELOW, WHICH SHALL BE 6 3/8" STANDARD COMBINED CURB & GUTTER.

STREET	LIMIT	CURB TYPE
PEPPER RIDGE	ENTIRETY	6 3/8" STD.
MEADOW PASS	ENTIRETY	6 3/8" STD.

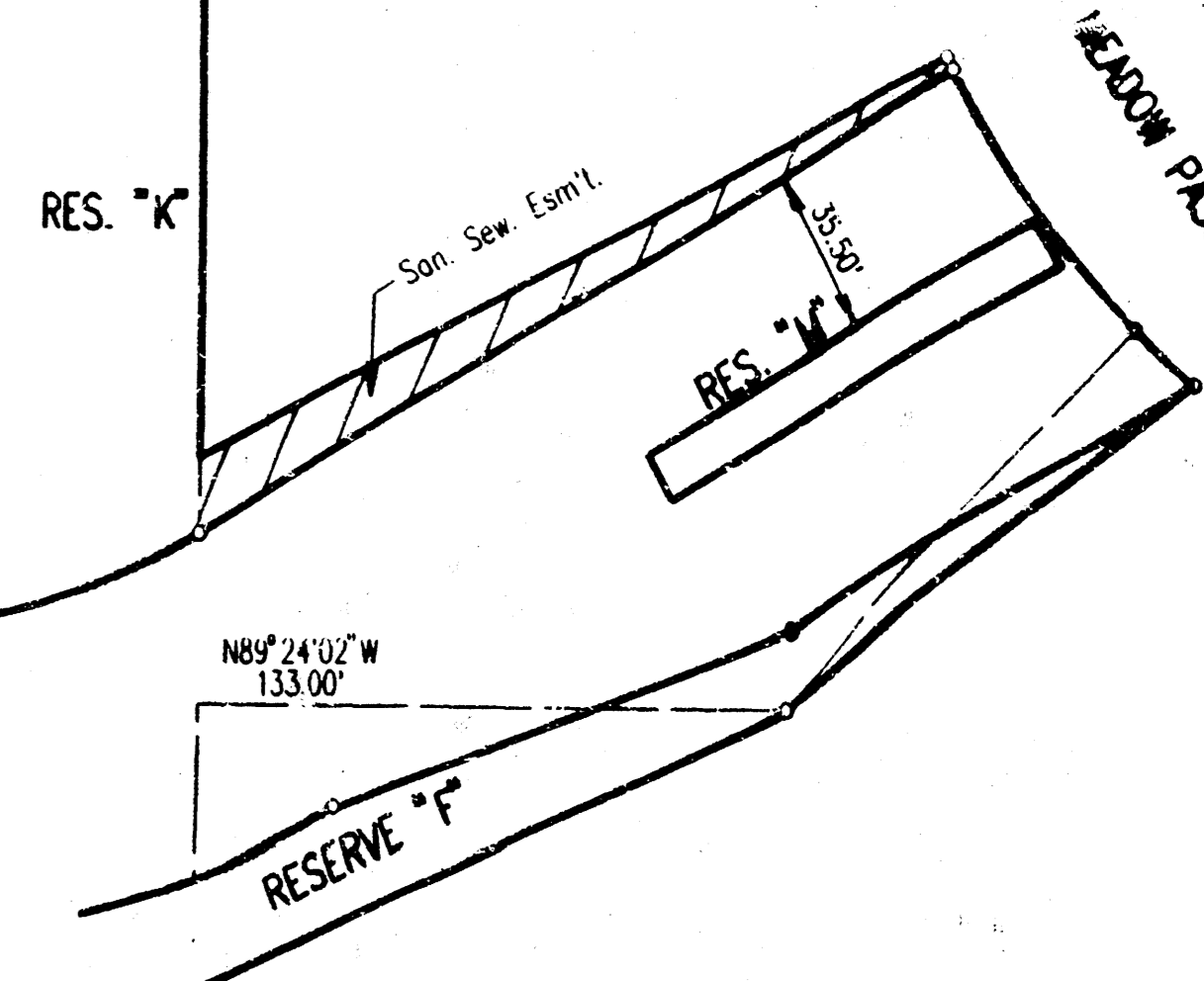
N.W. Corner Reserve "T"
Reflection Ridge 7th Addition

Most Northerly Point
Lot 1, Block 5, Reflection
Ridge 7th Addition

Most Easterly Point
Lot 1, Block 5, Reflection
Ridge 7th Addition

Most Southerly Corner
Lot 1, Block 5, Reflection
Ridge 7th Addition

user: /usr/bin/gnuplot 950541/rev-drainage00
 auto plot: B:22/95
 author: Joe Miller, JERRY

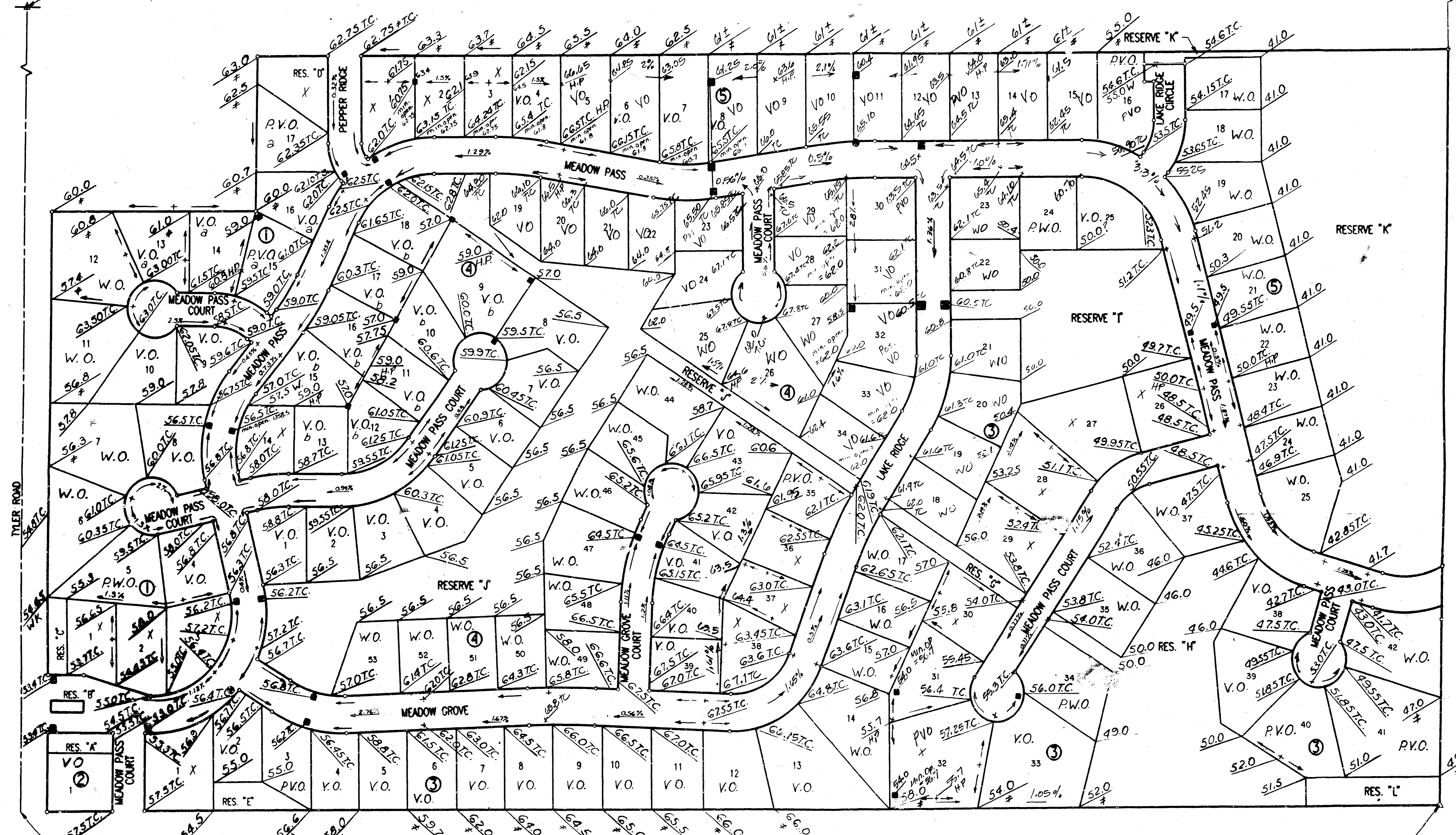


REVISED DRAINAGE PLAN 2-6-96 PDM

NORTHRIDGE LAKES TO WICHITA, SEDGWICK COUNTY, KANSAS FOUR CORNER LOT GRADING

N.E. Corner N.W. 1/4
Sec. 4, T27S, R1W
of the 6th p.m.
Fd. 1/2" I.P.

N.W. Corner
Sec. 4, T27S, R1W
of the 6th p.m.
Fd. 1" I.P.



SCALE: 1"=100'
○ = IRON SET
BSL = BUILDING SETBACK LINE
CAC = COMPLETE ACCESS CONTROL

B.M. - CITY OF WICHITA BENCH MARK DSC, 38 FEET WEST AND 90 FEET SOUTH OF THE INTERSECTION OF THE CENTERLINES OF TYLER ROAD AND 21ST STREET NORTH. ELEV. 1357.349 M.S.L. = 169.949 CITY DATUM

B.M. - RAILROAD SPIKE IN SOUTHWEST SIDE OF POWER POLE LOCATED 75' NORTH AND 58' EAST OF THE INTERSECTION OF THE CENTERLINES OF RIDGE ROAD AND 21ST STREET NORTH. ELEV. 1330.70 M.S.L. = 143.30 CITY DATUM

MINIMUM PAD ELEVATION (LOWEST OPENING) AS FOLLOWS:
BLOCK 3
LOTS 20 THROUGH 29 ELEV. 1349.5 M.S.L. = 162.1 CITY DATUM
LOTS 34 AND 35 ELEV. 1350.5 M.S.L. = 163.1 CITY DATUM
LOTS 36 THROUGH 41 ELEV. 1344.6 M.S.L. = 157.2 CITY DATUM
BLOCK 4
LOTS 1 THROUGH 8, LOTS 19 THROUGH 25 AND LOTS 45 THROUGH 54 ELEV. 1357.0 M.S.L. = 169.6 CITY DATUM
BLOCK 5
LOTS 17 THROUGH 25 ELEV. 1338.4 M.S.L. = 151.0 CITY DATUM

Note: Add 1300 to all Elevations to obtain M.S.L.
City Datum = M.S.L. - 1187.4

LEGEND

- H.P. High Point
- # Match Existing
- T.C. Top of Curb Elevation
- W. Walk Grade Elevation
- V.O. View Out Basement Lot
- P.V.O. Possible View Out Basement Lot
- N.V.O. No View Out Basement Lot
- W.O. Walk Out Basement Lot
- P.W.O. Possible Walk Out Basement Lot
- V.G. Valley Gutter
- ⊖ Min. Opening for View Out or Walk Out Basement = 1361.8
- ⊙ Min. Opening for View Out or Walk Out Basement = 1360.0
- ⊕ Min. Opening for View Out or Walk Out Basement = 1358.5

**APPROVED
DRAINAGE PLAN**

usr:\user\dms\95054\ref\gradgdn
date plotted: 4/25/95
delivered to: dar crank

S.W. Corner N.W. 1/4
Sec. 4, T27S, R1W
of the 6th p.m.
Fd. 1/2" I.P.

Center
Sec. 4, T27S, R1W
of the 6th p.m.
Fd. 3/4" I.P.