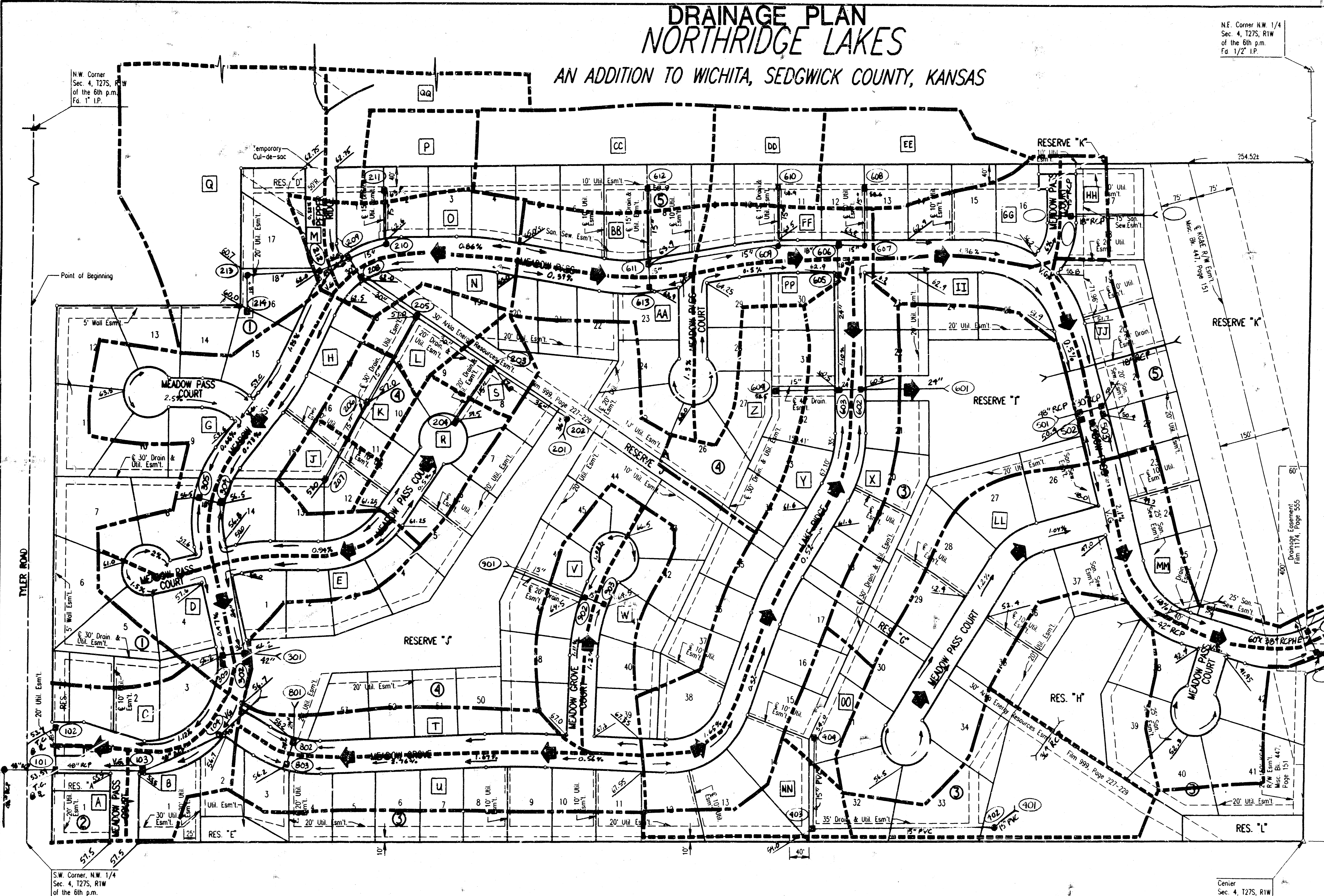


# DRAINAGE PLAN NORTHRIDGE LAKES

AN ADDITION TO WICHITA, SEDGWICK COUNTY, KANSAS

N.E. Corner N.W. 1/4  
Sec. 4, T27S, R1W  
of the 6th p.m.  
Fd. 1/2" I.P.



SCALE: 1"=100'  
○ = IRON SET  
BSL = BUILDING SETBACK LINE  
CAC = COMPLETE ACCESS CONTROL

B.M. - CITY OF WICHITA BENCH MARK DISC. 38 FEET WEST AND 90 FEET SOUTH OF THE INTERSECTION OF THE CENTERLINES OF TYLER ROAD AND 21ST STREET NORTH.  
ELEV. 1357.349 M.S.L. = 169.949 CITY DATUM

B.M. - RAILROAD SPIKE IN SOUTHWEST SIDE OF POWER POLE LOCATED 75' NORTH AND 58' EAST OF THE INTERSECTION OF THE CENTERLINES OF RIDGE ROAD AND 21ST STREET NORTH.  
ELEV. 1330.70 M.S.L. = 143.30 CITY DATUM

MINIMUM PAD ELEVATION (LOWEST OPENING) AS FOLLOWS:

BLOCK 3  
LOTS 20 THROUGH 27 ELEV. = 1349.5 M.S.L. = 162.1 CITY DATUM  
LOTS 33, 34, 39, AND 40 ELEV. = 1350.5 M.S.L. = 163.1 CITY DATUM  
LOTS 35 THROUGH 38 ELEV. = 1344.6 M.S.L. = 157.2 CITY DATUM

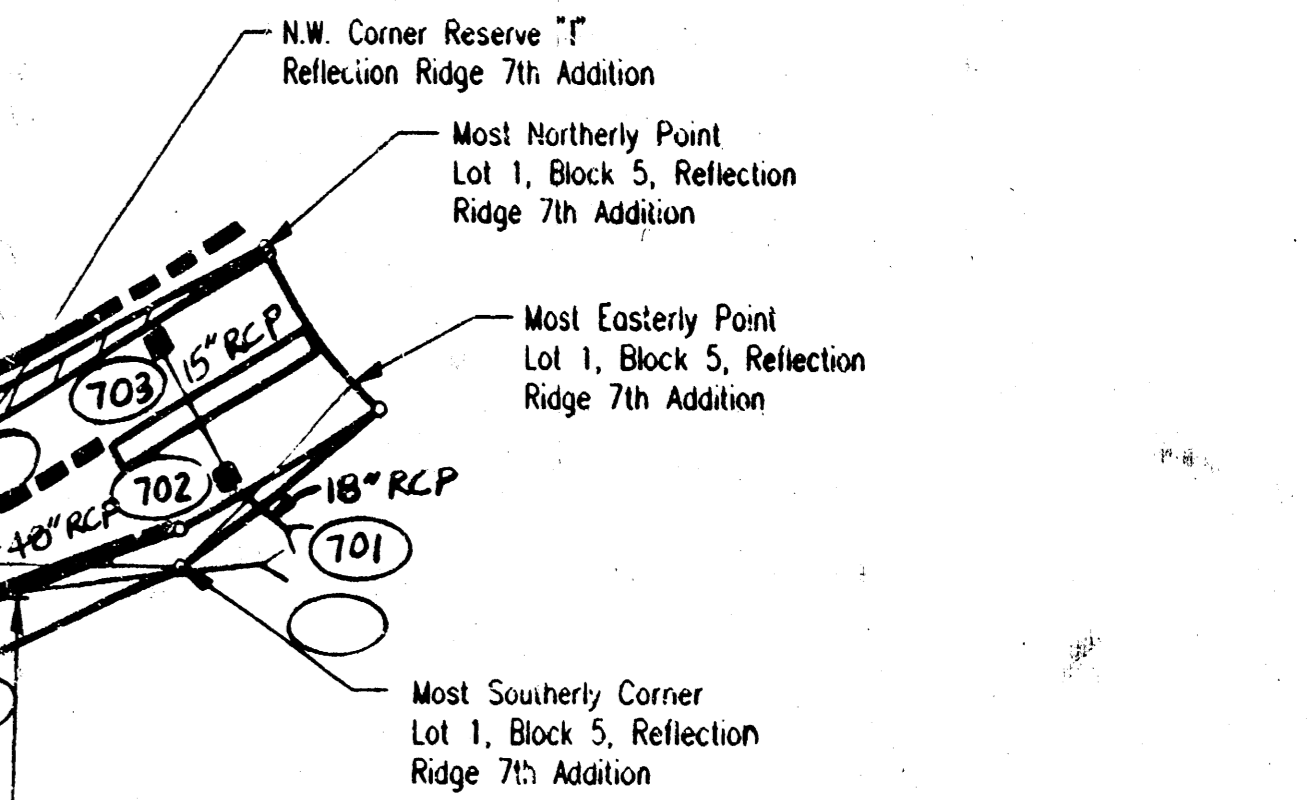
BLOCK 4  
LOTS 1 THROUGH 9 ELEV. = 1357.0 M.S.L. = 169.6 CITY DATUM  
LOTS 19 THROUGH 25 ELEV. = 1357.0 M.S.L. = 169.6 CITY DATUM  
LOTS 44 THROUGH 48 ELEV. = 1357.0 M.S.L. = 169.6 CITY DATUM  
LOTS 50 THROUGH 53 ELEV. = 1357.0 M.S.L. = 169.6 CITY DATUM

BLOCK 5  
LOTS 17 THROUGH 25 ELEV. = 1338.4 M.S.L. = 151.0 CITY DATUM

- LEGEND**
- INLET
  - MANHOLE
  - MAJOR BASIN BOUNDARY
  - - - SUBBASIN
  - A DRAINAGE BASIN DESIGNATION
  - 101 STORM SEWER SYSTEM NODE
  - MAJOR STORM FLOW
  - MINOR STORM FLOW

**CURB TYPES:**  
ALL COMBINED CURB & GUTTER MAY BE 3 3/8" ROLL EXCEPT AS NOTED BELOW, WHICH SHALL BE 6 3/8" STANDARD COMBINED CURB & GUTTER.

STREET	LIMIT	CURB TYPE
PEPPER RIDGE	ENTIRETY	6 3/8" STD.
MEADOW PASS	ENTIRETY	6 3/8" STD.



user: /usr/local/bin/ps2pdf  
 user: /usr/local/bin/ps2pdf  
 user: /usr/local/bin/ps2pdf