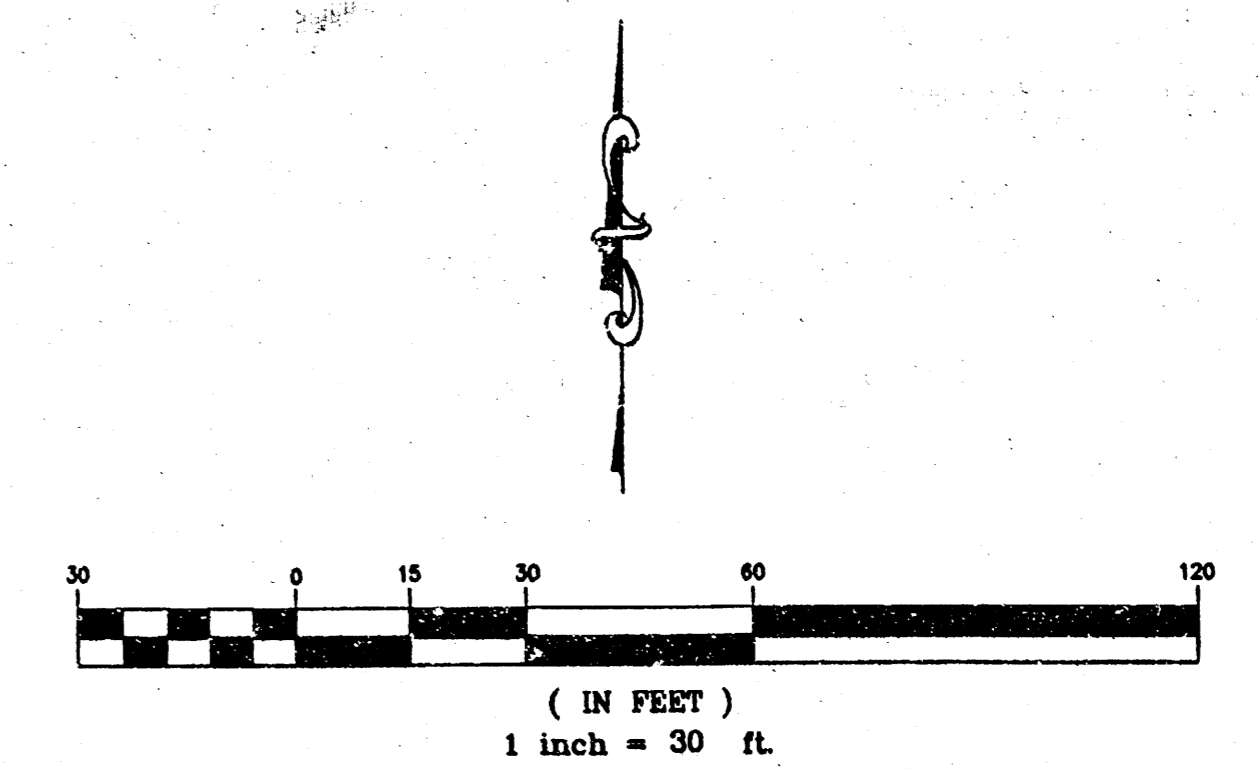
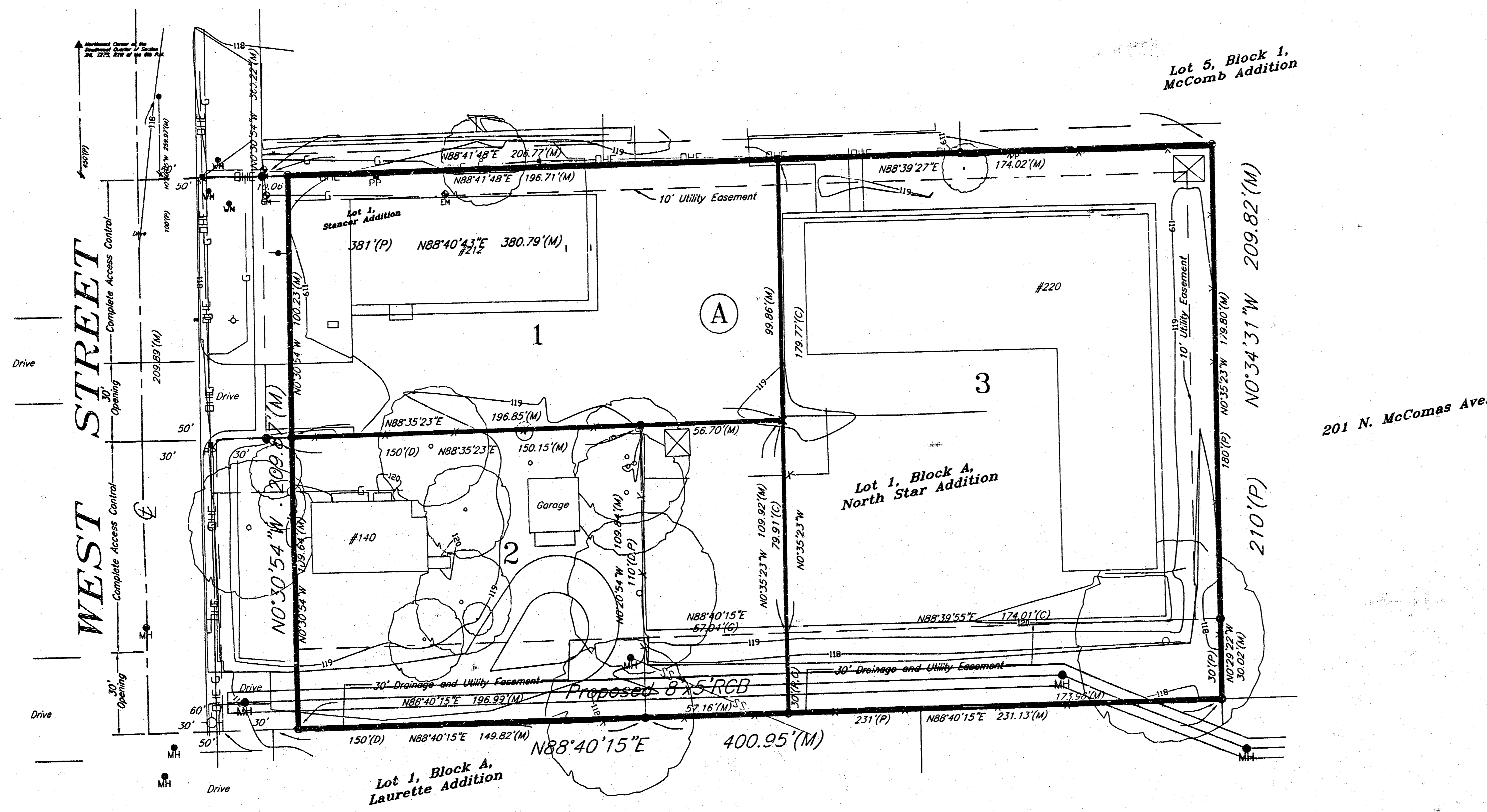


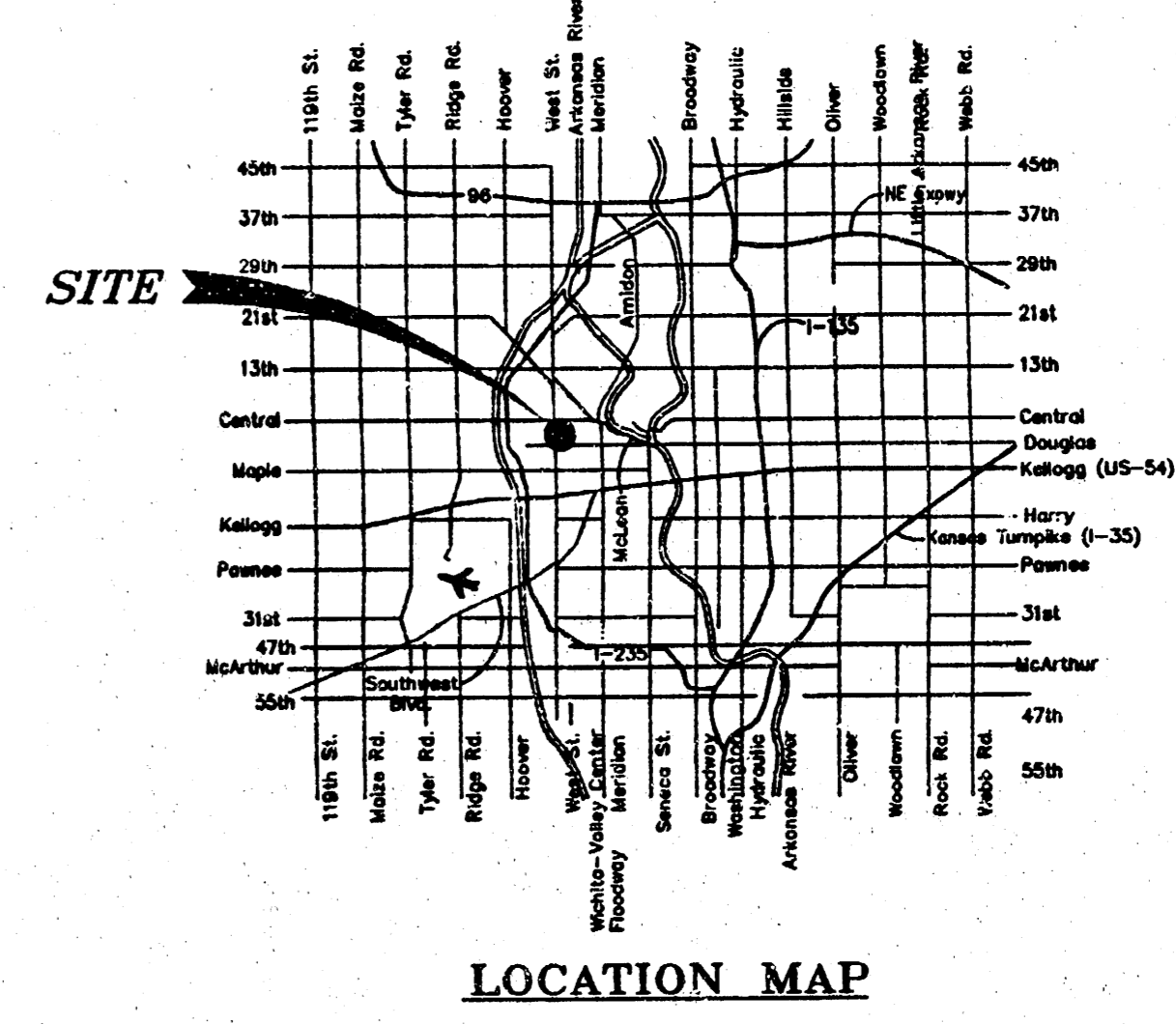
DRAINAGE PLAN NORTH STAR SECOND ADDITION CITY OF WICHITA, SEDGWICK COUNTY, KANSAS

Part of the Southwest 1/4, Section 24, Township 27 South, Range 1 West of the 6th. P.M.



CITY BENCH MARK:
City of Wichita Standard Bench Mark,
Southwest Corner of the intersection
of West St. and 2nd St.
Elevation: 118.87 City Datum
1506.27 MSL

ON-SITE BENCH MARK:
Chiseled Square, Top of Curb, West of Fire
Hydrant, East Side of West Street, 100 feet
South of Northwest Corner of Lot 1,
NORTH STAR ADDITION.
Elevation: 118.05 City Datum
1505.45 MSL



Proposed Drainage							
Lot#	AREA	I5	C5	Q5	I100	C100	Q100
Entire	1.77	4.56*	0.69	5.6	7.37*	0.80	10.4

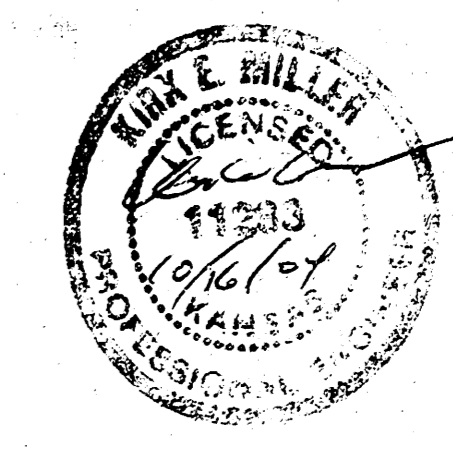
* I5 and I100 were developed from a Tc=15 min.

Existing Drainage							
Lot#	AREA	I5	C5	Q5	I100	C100	Q100
1	0.45	4.56*	0.69	1.4	7.37*	0.80	2.6
2	0.50	4.56*	0.48	1.1	7.37*	0.72	2.6
3	0.82	4.56*	0.69	2.6	7.37*	0.80	4.8

* I5 and I100 were developed from a Tc=15 min.

Storm Water generally drains from north to south on the site. An 8' x 5' RC Box culvert is being installed by the City of Wichita along the south side of the site. Drainage from the site will drain into the proposed drainage structure. When the residential structure is demolished and replaced with a commercial structure, the net increase in runoff will be approximately 0.4 cfs.

- LEGEND**
- Bearing Basis Assumed
Contour Interval: One Foot
- Monument Found
 - #4 Rebar with I.D. Cap Set
 - x Chiseled Cross, Set
 - S.B. Building Setback Line
 - A.C. Access Control
 - Shed
 - J Guy Wire
 - ⊕ Gas Meter
 - ⊕ Light Pole
 - ⊕ Manhole
 - ⊕ Tree
 - ⊕ Power Pole
 - ⊕ Sign
 - ⊕ Water Meter
 - ⊕ Water Valve
 - ⊕ Fire Hydrant
 - Fence
 - Overhead Electric
 - Underground Gas Line
 - SS Sanitary Sewer Line



File name: 04112

516 S. Market, Wichita, KS 67202 316/264-0242