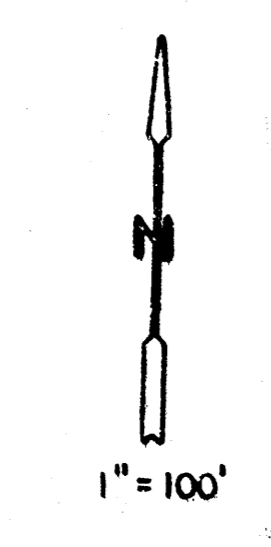
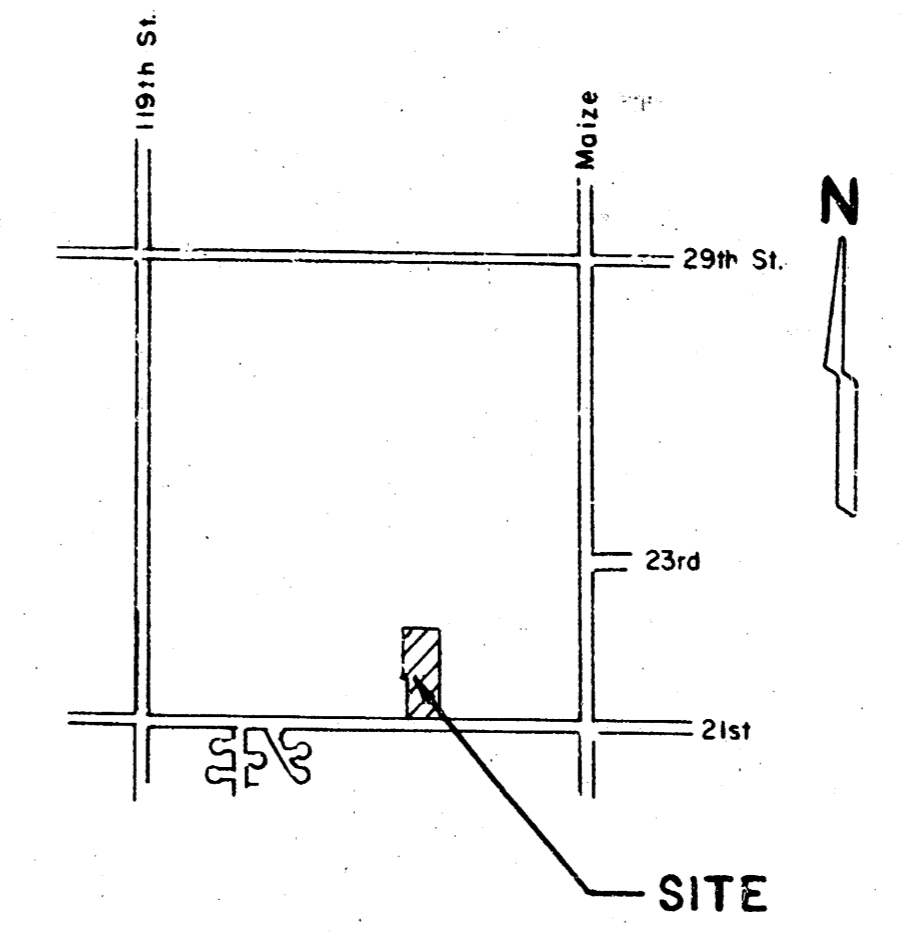


PRELIMINARY PLAT
NORTHWEST CHRISTIAN CHURCH ADDITION
 TO WICHITA, SEDGWICK COUNTY, KANSAS

LEGAL DESCRIPTION

BEGINNING AT THE SOUTHEAST CORNER OF THE WEST 1/2 OF THE SOUTHEAST 1/4 OF SECTION 6, TOWNSHIP 27 SOUTH, RANGE 1 WEST OF THE 6TH P.M., SEDGWICK COUNTY, KANSAS; THENCE WEST ALONG THE SOUTH LINE OF SAID SOUTHEAST 1/4 WITH AN ASSUMED BEARING OF N. 39 00' 00" W., A DISTANCE OF 427.00 FEET; THENCE N. 01 20' 39" E., PARALLEL WITH THE EAST LINE OF SAID WEST 1/2 OF SAID SOUTHEAST 1/4, A DISTANCE OF 522.86 FEET; THENCE N. 89 48' 35" W., PARALLEL WITH THE NORTH LINE OF SAID SOUTHEAST 1/4, A DISTANCE OF 230.00 FEET; THENCE S. 01 20' 39" E., A DISTANCE OF 520.00 FEET; THENCE S. 89 48' 35" E., PARALLEL WITH THE NORTH LINE OF SAID SOUTHEAST 1/4, A DISTANCE OF 450.00 FEET TO A POINT IN THE EAST LINE OF THE WEST 1/2 OF SAID SOUTHEAST 1/4; THENCE S. 01 20' 39" W., A DISTANCE OF 1071.45 FEET TO THE POINT OF BEGINNING, EXCEPT THE SOUTH 80.00 FEET THEREOF.

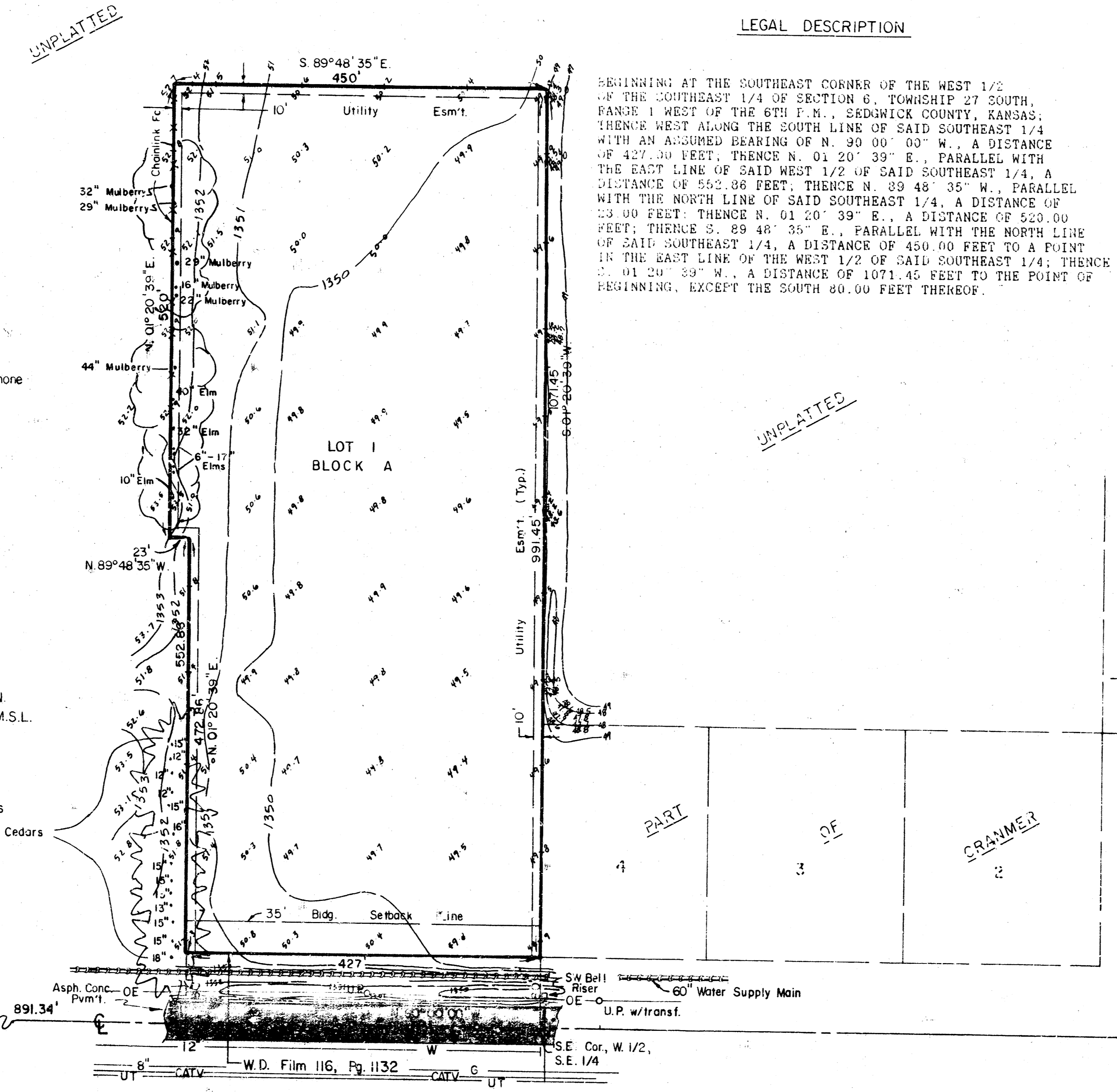


- W = Water Main
- OE = Overhead Electric
- UT = Underground Telephone
- G = Gas Main
- CATV = Cable TV
- UP = Utility Pole
- ℳ = Spot Elevation

BENCHMARK
 City Disc 99° S. & 64° E.
 of the Centerline of 21st St N.
 & Maize Rd. Elev. = 1351.70 M.S.L.

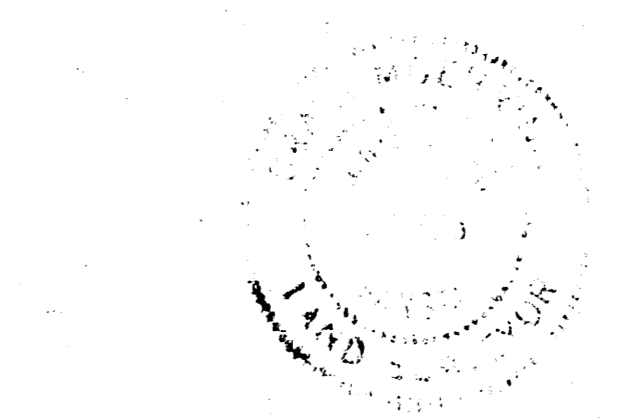
NOTE
 Add 1300.00 to spot elevations
 to convert to M.S.L.

SW Cor., SE 1/4
 Sec. 6 - 27 - 1 W.



ADDITION

PART OF CRAMMER



MOEHRING & ASSOCIATES
 CONSULTING ENGINEERS
 WICHITA

EXHIBIT "A"