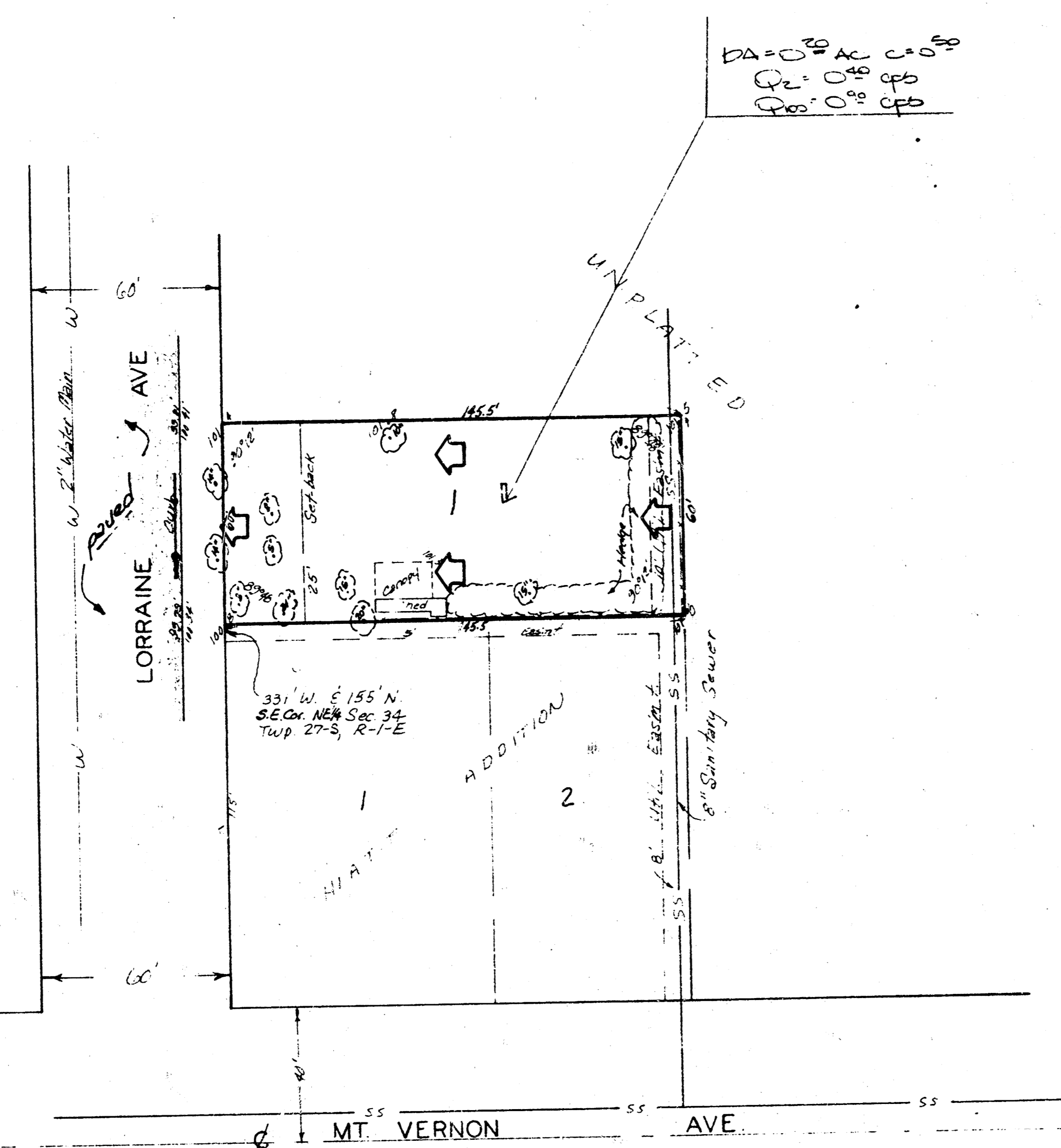


drainage plan 7-0-83



SKETCH PLAT
 NORTON ADDITION

TRACT IN THE NE 1/4 OF SEC. 34 TWP. 27-S. R-7-E
 OF THE 6TH P.M., SEDGWICK COUNTY, KANSAS.

JOHANN E. AND DELLA E. REMPEL

BAUGHMAN COMPANY, P.A.
 SURVEYING & ENGINEERING
 316/262-7271 • 330 LAURA • WICHITA, KANSAS 67211

7/7/83

NORTON ADDITION
 (DRAINAGE)

BAUGHMAN COMPANY, P.A.
 SURVEYING & ENGINEERING
 316/262-7271 • 330 LAURA • WICHITA, KANSAS 67211

MEMORANDUM

PROJECT	Norton Addition	DATE	July 8, 1983
JOB NO.		COPIES TO	
TO	Chris Breitenstein		
FROM	N. Brent Wooten		
REFERENCE	Drainage Plan		

Final Plat is scheduled for July 21, 1983.

Lot 1 (0.20 AC.) will drain west to Lorraine and south on Lorraine to Mt. Vernon. Drainage will be discharged to the street thru a driveway.

PAGE OF