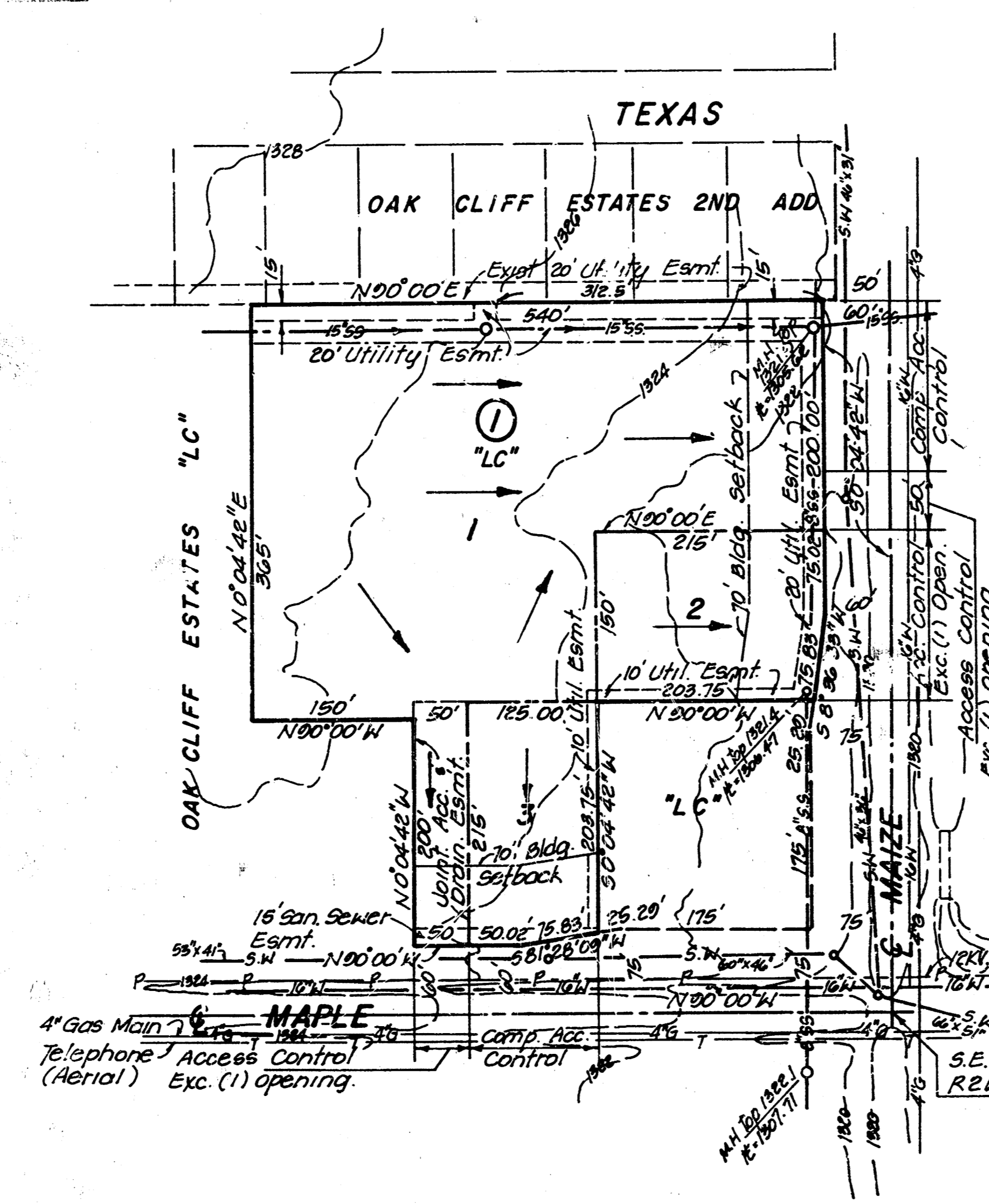


Oak Cliff Estates 2nd



VICINITY MAP
OAK CLIFF ESTATES 4th ADDITION
 Owner: Fleming Companies Inc.
 c/o James Tapp
 P.O. Box 1160
 Topeka, Ks. 66601

Engineer: P.E.C. p.a.
 1440 English
 Wichita, Ks. 67211

Drainage Plan

Lots 1, 2, and 3 shall be graded to drain to the existing streets and/or existing storm sewers via drains, flumes, private storm sewers, and/or other approved drainage facilities.

S.M. Maize Rd & Maple - City of Wichita bench mark disc. 43.5' South & 52.7' east of centerline intersection of both
 Elev = 133.20 City datum
 = 1320.60 M.S.L.

SCALE 1"=100'
 9-9-1988

4" Gas Main
 Telephone Access Control (Aerial) Exc. (1) opening
 Maple
 Camp 102 Control
 S.E. Cor. Sec. 19, T27S
 R2W of 6th PM.