

OAK CLIFF ESTATES 5TH ADDITION TO WICHITA, SEDGWICK COUNTY, KANSAS

N.W. CORNER S.E. 1/4
SEC. 19, T27S, R1W
OF THE 6TH P.M.

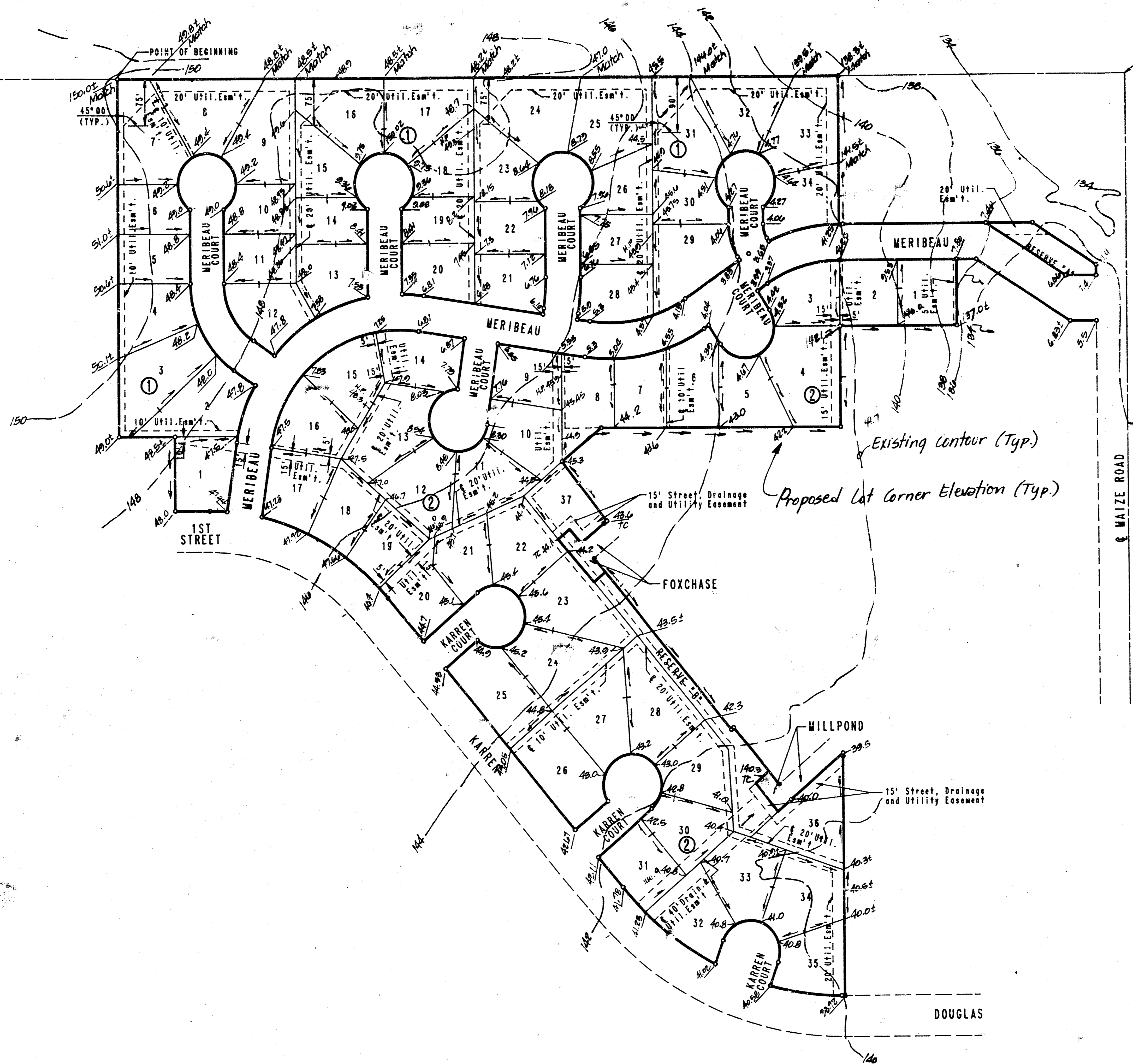
N.E. CORNER S.E. 1/4
SEC. 19, T27S, R1W
OF THE 6TH P.M.

SCALE: 1"=100'
 ○ = IRON SET
 ● = IRON FOUND
 B.S.L. = BUILDING SETBACK LINE

B.M. - INTERSECTION OF MAIZE ROAD AND MAPLE.
 CITY OF WICHITA BENCH MARK DISC 43.5 FT.
 SOUTH AND 52.7 FT. EAST OF INTERSECTION
 CENTERLINE OF BOTH.
 ELEV. = 133.185 CITY DATUM
 ELEV. = 1320.555 M.S.L.

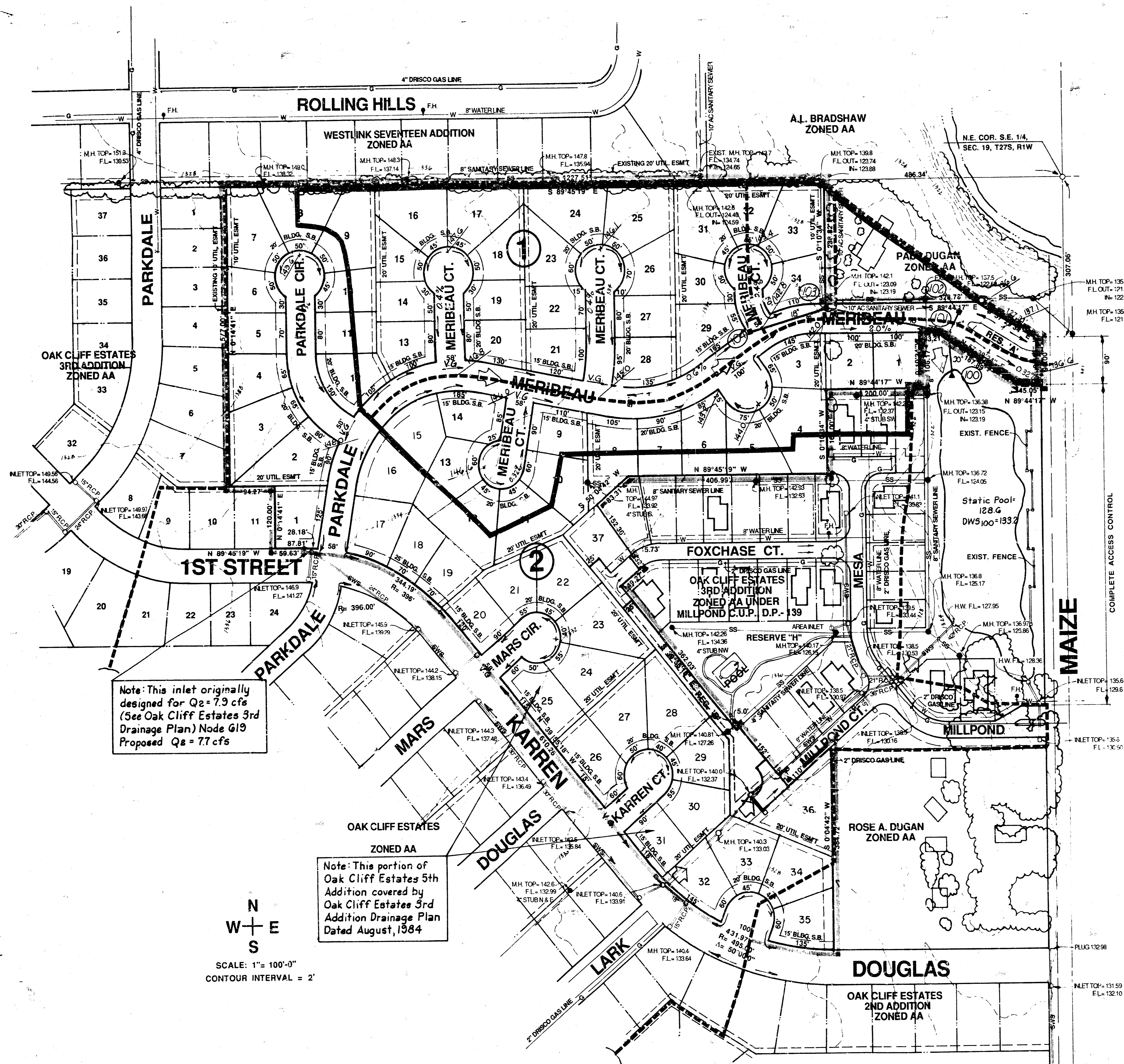
MINIMUM PAD ELEVATION (LOWEST OPENING) FOR LOTS 1
 AND 2, BLOCK 2 = ELEV. 1324.0 M.S.L.

FOR ADDITIONAL SETBACKS SEE C.U.P. DP-139 ON FILE
 WITH THE METROPOLITAN AREA PLANNING DEPARTMENT.



**APPROVED
DRAINAGE PLAN**

Rev. Nov. 19, 1991
 DETAILED DRAINAGE PLAN April, 1991



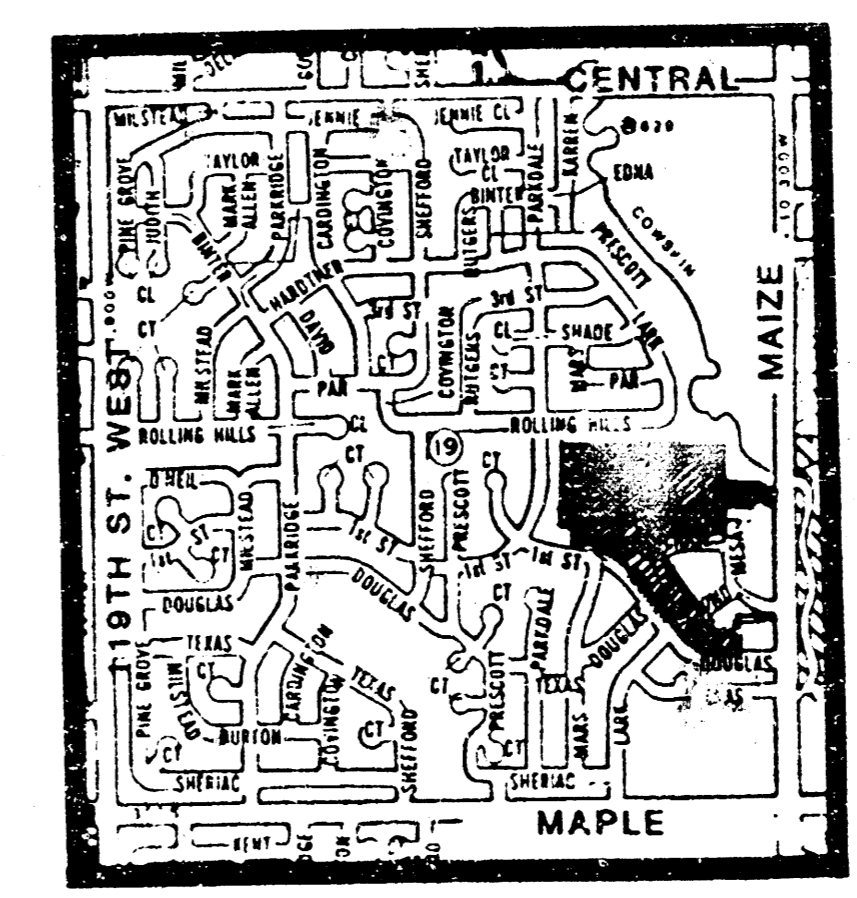
Note: This inlet originally designed for $Q_2 = 7.9$ cfs (See Oak Cliff Estates 3rd Drainage Plan) Node G19 Proposed $Q_2 = 7.7$ cfs

Note: This portion of Oak Cliff Estates 5th Addition covered by Oak Cliff Estates 3rd Addition Drainage Plan Dated August, 1984

N
W + E
S
SCALE: 1" = 100'-0"
CONTOUR INTERVAL = 2'

LEGEND

- Drainage Direction - Minor Storm
- ⇨ Drainage Direction - Major Storm
- 18" - 24" Prop. Storm Sewer & Inlet and Pipe Size
- Prop. Drainage Basin
- Prop. Drainage Sub-Basin
- 102 Node Identification Point
- 145.9 Estimated Future Pavement Elevation

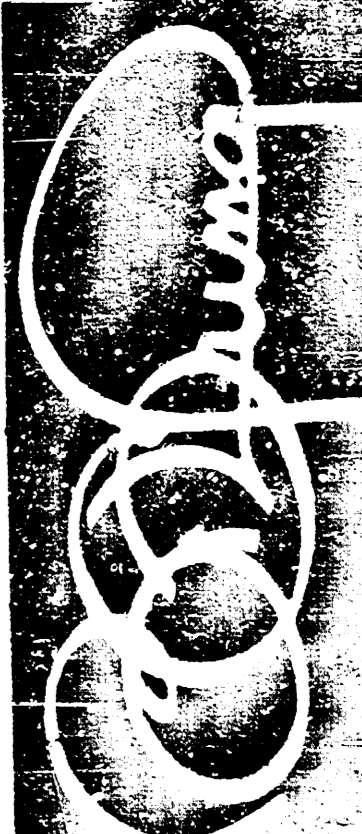


LOCATION MAP

N
W + E
S
NO SCALE



PROFESSIONAL ENGINEERING CONSULTANTS, P.A.
ENGINEERS
WICHITA, KANSAS



BILL G. YUNG DESIGN
WICHITA, KS 67220
4912 E. 29TH STREET NORTH
316-680-5667

DRAINAGE PLAN 2/22/91

OAK CLIFF ESTATES 5TH ADDITION

DATE REV.

SHEET TITLE

PROJECT OAK CLIFF 4TH ADDITION

SHEET 53 D OF