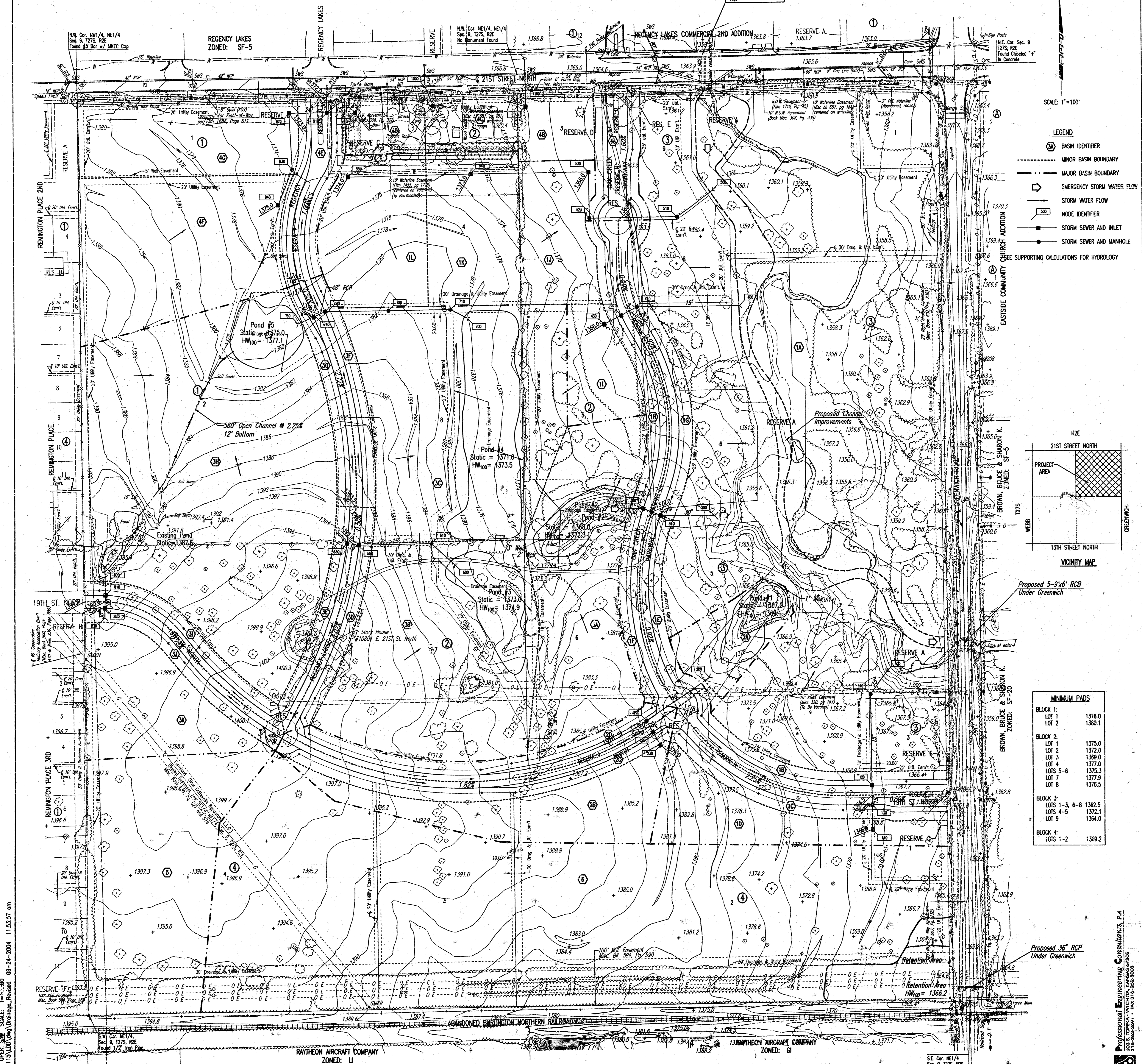


DRAINAGE PLAN FOR OAK CREEK

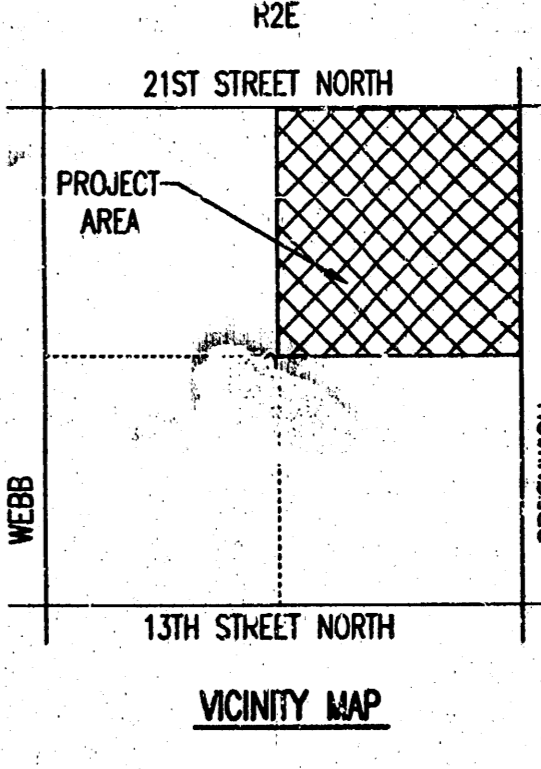
AN ADDITION TO WICHITA, SEDGWICK COUNTY, KANSAS

C.A. from offsite =
1.80 sq. miles
Q₁₀₀ = 2000 cfs



SCALE: 1"=100'

- LEGEND**
- Ⓐ BASIN IDENTIFIER
 - MINOR BASIN BOUNDARY
 - MAJOR BASIN BOUNDARY
 - EMERGENCY STORM WATER FLOW
 - STORM WATER FLOW
 - Ⓝ NODE IDENTIFIER
 - STORM SEWER AND INLET
 - STORM SEWER AND MANHOLE
- SEE SUPPORTING CALCULATIONS FOR HYDROLOGY



MINIMUM PADS

BLOCK 1:	
LOT 1	1376.0
LOT 2	1380.1
BLOCK 2:	
LOT 1	1375.0
LOT 2	1372.0
LOT 3	1369.0
LOT 4	1377.0
LOTS 5-6	1375.3
LOT 7	1377.9
LOT 8	1376.5
BLOCK 3:	
LOTS 1-3, 6-8	1362.5
LOTS 4-5	1372.1
LOT 9	1364.0
BLOCK 4:	
LOTS 1-2	1369.2

08-24-2004 11:53:57 am
 SCALE: 1"=100'
 DATE: 08/24/04
 DRAWN BY: [illegible]
 CHECKED BY: [illegible]

Professional Engineering Consultants, P.A.
 303 S. TOPICKA, WICHITA, KANSAS 67202
 316-262-2991 • FAX 316-262-3003