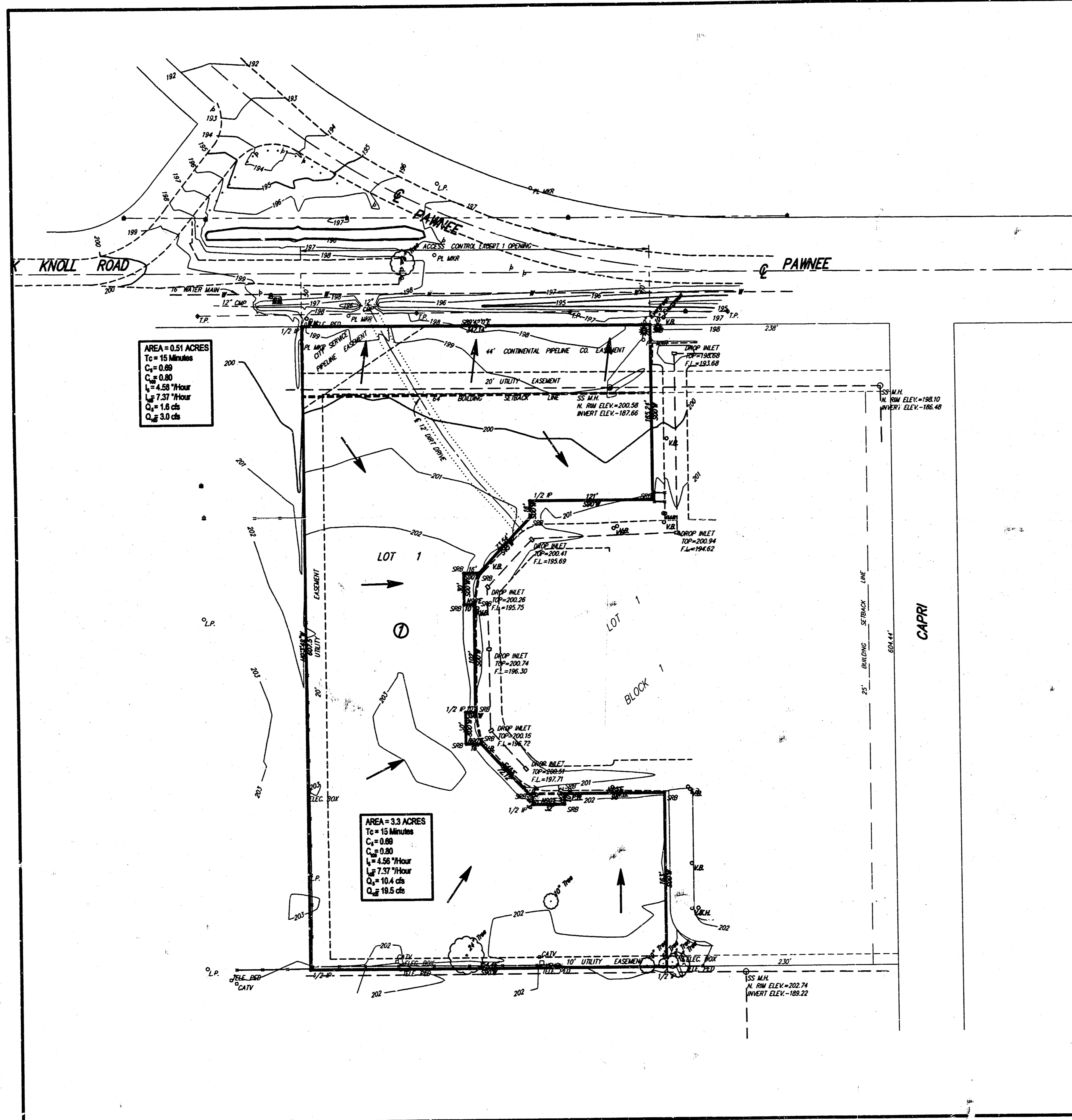


OAK KNOLL 3RD ADDITION

WICHITA, SEDGWICK COUNTY, KANSAS

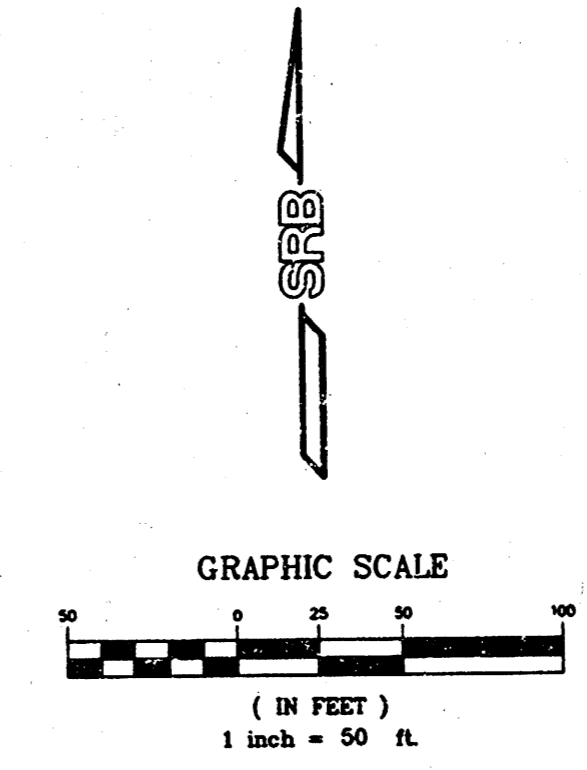


DESCRIPTION:

Lot 1, Block 1, Oak Knoll Addition to Wichita, Sedgwick County, Kansas, except as hereinafter described as: Beginning at the northeast corner of Lot 1; thence southerly along the east line of said Lot 1, bearing S00°E a distance of 804.44 feet to the S.E. corner of said Lot 1; thence bearing N90°W a distance of 230.00 feet; thence bearing N00°E a distance of 163.00 feet; thence bearing N90°W a distance of 98.00 feet; thence bearing S00°E a distance of 10.00 feet; thence bearing N90°W a distance of 32.00 feet; thence bearing N00°E a distance of 6.44 feet; thence bearing N45°W a distance of 72.12 feet; thence bearing N90°W a distance of 16.00 feet; thence bearing N00°E a distance of 32.00 feet; thence bearing N90°E a distance of 10.00 feet; thence bearing N00°E a distance of 102.00 feet; thence bearing N90°W a distance of 10.00 feet; thence bearing N00°E a distance of 30.00 feet; thence bearing N90°E a distance of 16.00 feet; thence bearing N45°E a distance of 73.54 feet; thence bearing N00°E a distance of 16.00 feet; thence bearing N90°E a distance of 121.00 feet; thence bearing N00°E a distance of 165.25 feet to the north line of said Lot 1; thence bearing S89°42'E along the north line a distance of 238.00 feet to the point of beginning.

GROSS SIZE:
163,002.03 Sq. Ft. ±
3.79 Acres ±

DALE HEDDY
8212 MAPLE
WICHITA, KANSAS 67209
(316) 721-8603



DRAINAGE PLAN									
OAK KNOLL 3RD ADDITION									
CITY OF WICHITA, KANSAS									
SRB	824 NORTH MAIN WICHITA, KANSAS 67203 http://www.srb.com/eng	316-264-8008 FAX 316-4621 E-mail: sr@sr.com	<table border="1"> <tr> <td>DATE</td> <td>BY</td> <td>CHKD</td> </tr> <tr> <td>3-16-08</td> <td></td> <td></td> </tr> </table>	DATE	BY	CHKD	3-16-08		
DATE	BY	CHKD							
3-16-08									
SAVOY, RUGGLES & BOHM, P.A. ENGINEERING & SURVEYING PROJECT NUMBER:									
DESIGN	DRAWN	UTILITY	REVIEW						
CMB									