

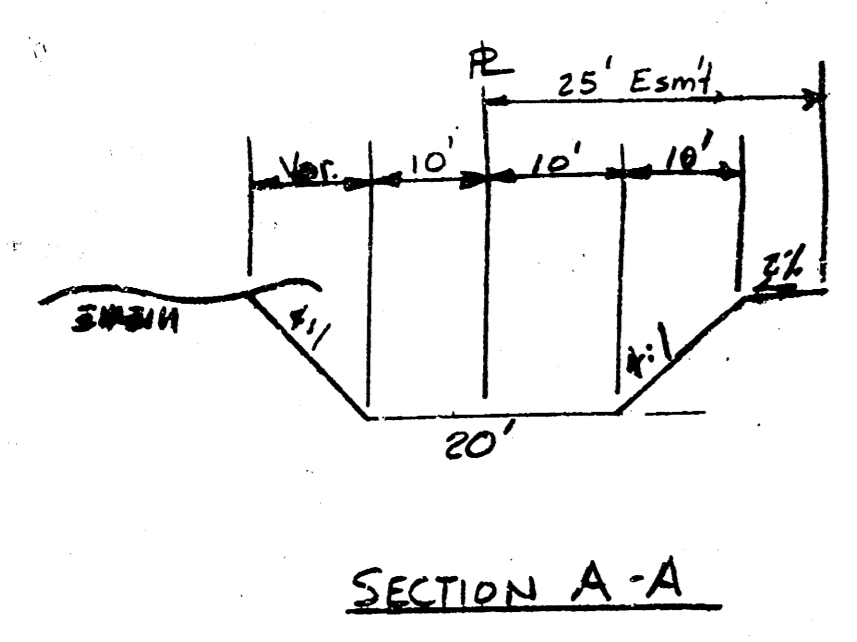
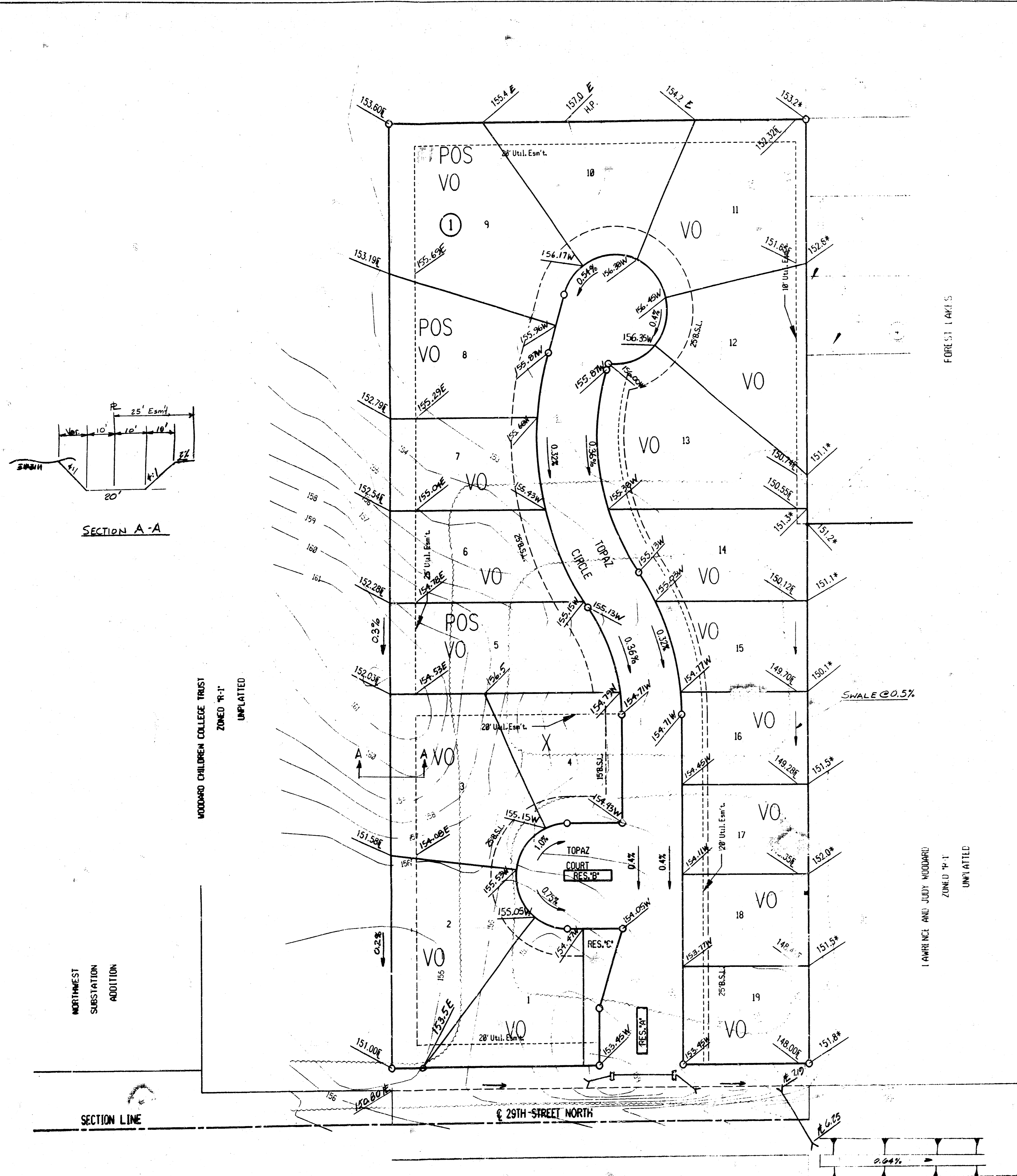
**APPROVED  
DRAINAGE PLAN**

**FOUR-CORNER  
DRAINAGE PLAN**

**OAK RIDGE ADDITION**

**OWNER: J.V. VAN ALLEN  
R.R. 2 BOX 108  
BELLE PLAINE, KANSAS 67013**

**ENGINEER: PROFESSIONAL ENGINEERING CONSULTANTS, P.A.  
303 S. TOPEKA  
WICHITA, KANSAS 67202**



SECTION A-A

NORTHWEST  
SUBSTATION  
ADDITION

WOODWARD CHILDREN COLLEGE TRUST  
ZONED "R-1"  
UNPLATTED

LAWRENCE AND JUDY WOODWARD  
ZONED "R-1"  
UNPLATTED

SCALE: 1"=50'  
REVISED 9 FEB 96 MBS  
11-1-95

O - IRON SET  
TOPOGRAPHY DATE: JUNE, 1995

**LEGEND**  
\* - MATCH  
E - EASEMENT GRADE  
F - FLOW LINE

DATUM B.M. - CHISELED "T" ON N.E. CORNER OF EAST HEADMALL  
OF RED UNDER RIDGE ROAD AT 280' NORTH OF  
EAST 1/4 CORNER, SEC. 4, T27S, R10E.  
ELEV: 138.46 CITY DATUM  
ELEV: 1325.64 M.S.L.

RESERVES "A", "B" AND "C" SHALL PERMIT LANDSCAPING,  
LIGHTNING AND UTILITIES CONFINED TO EASEMENTS.

**UTILITY NOTES**

POWER: OVERHEAD ELECTRIC 3 PHASE, 4 WIRE, EAST-WEST  
ON 29TH STREET APPROX. 25' NORTH OF CENTERLINE.

TELEPHONE: BURIED TELEPHONE EAST-WEST ON 29TH  
STREET APPROX. 21' SOUTH OF CENTERLINE.

NATURAL GAS: 4" PLASTIC PEOPLES GAS MAIN ON 29TH  
STREET; WEST END = 117' WEST OF WEST LINE OF  
FOREST LAKES.

SANITARY SEWER: 8" SANITARY SEWER AVAILABLE 400'  
EAST OF SOUTHEAST CORNER OF PROPOSED PLAT.

# DRAINAGE PLAN 9-18-95 OAK RIDGE ADDITION

OWNER: J.V. VAN ALLEN  
R.R. 2 BOX 108  
BELLE PLAINE, KANSAS 67013

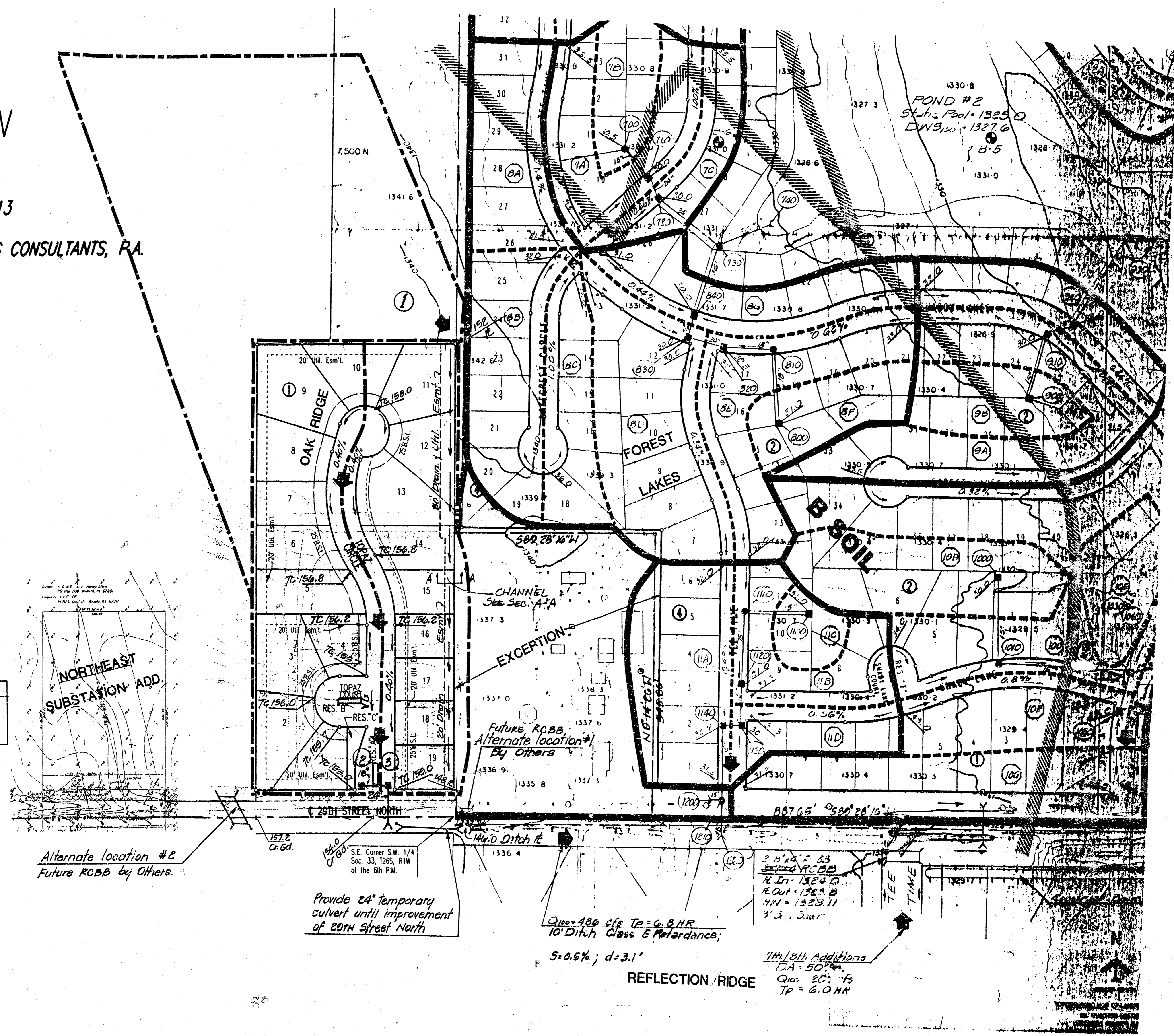
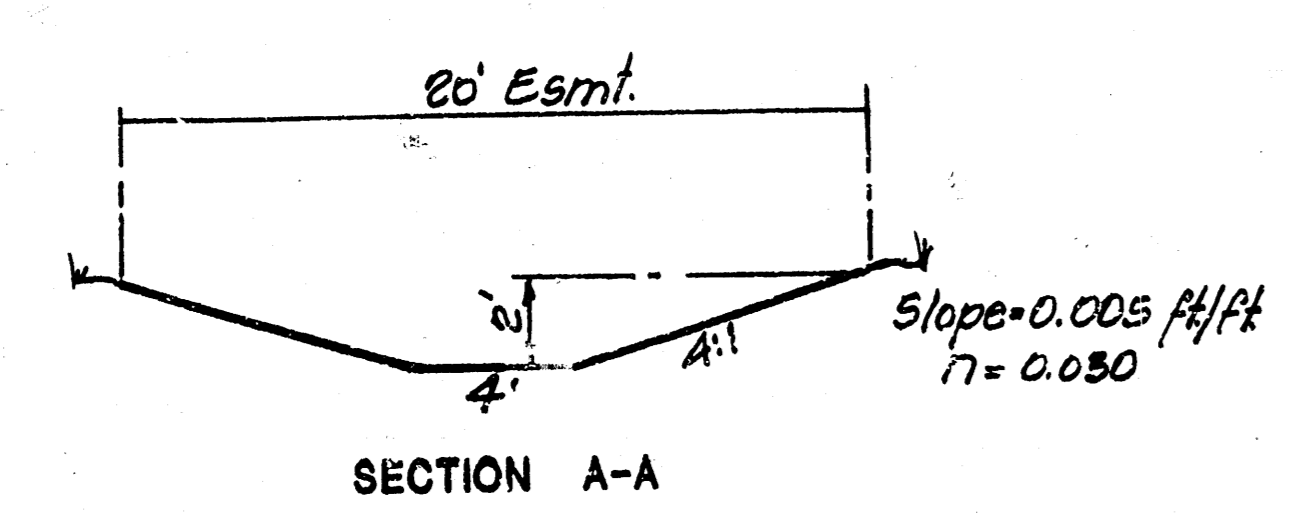
ENGINEER: PROFESSIONAL ENGINEERING CONSULTANTS, P.A.  
303 S. TOPEKA  
WICHITA, KANSAS 67202

SCALE: 1"=100'

o = IRON SET  
TOPOGRAPHY DATE: JUNE, 1995

DATUM B.M. - CHISELLED T.I. ON N.E. CORNER OF EAST HEADWALL OF RCB UNDER RIDGE ROAD AT 200' NORTH OF EAST 1/4 CORNER, SEC. 4, T27S, R11W. ELEV.=1326.46 CITY DATUM ELEV.=1325.64 M.S.L.

| DA | Condition          | C    | i    | Q       | Return Period |
|----|--------------------|------|------|---------|---------------|
| ①  | 8 Ac Cultivated    | 0.30 | 7.37 | 2.9 cfs | 100 Yrs.      |
| ②  | 3.9 Ac Residential | 0.36 | 3.88 | 5.4 cfs | 2 Yrs         |
| ③  | 4.0 Ac Residential | 0.36 | 3.88 | 5.5 cfs | 2 Yrs         |



Alternate location #2  
Future R.C.B.B. by Others.

Provide 24" temporary culvert until improvement of 20th Street North

14'x10' Ditch #1

Q<sub>max</sub> = 480 cfs TP = 6.8 HR  
10' Ditch Class E Retardance;  
S = 0.5% ; d = 3.1'

17th St Addition  
CA = 50%  
Q<sub>max</sub> = 20 cfs  
TP = 6.0 HR