

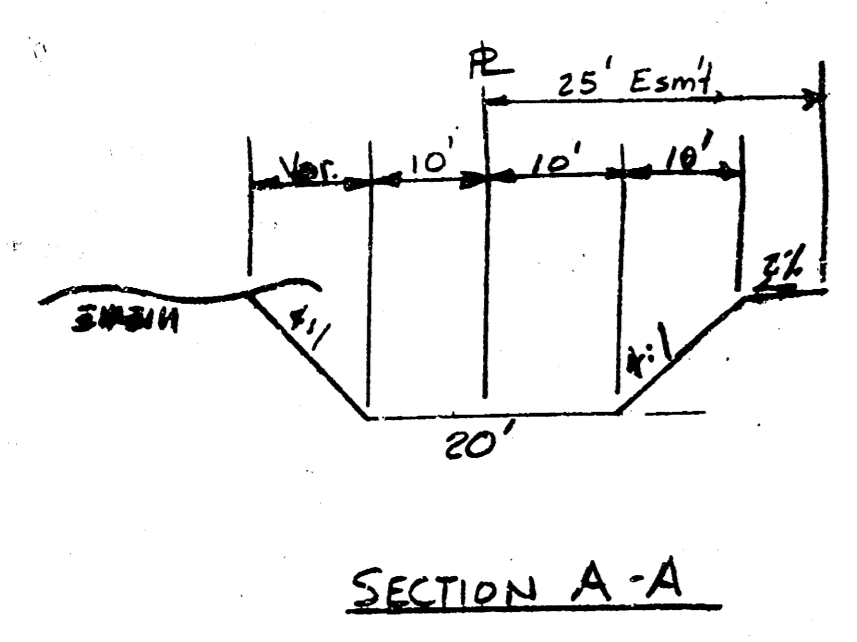
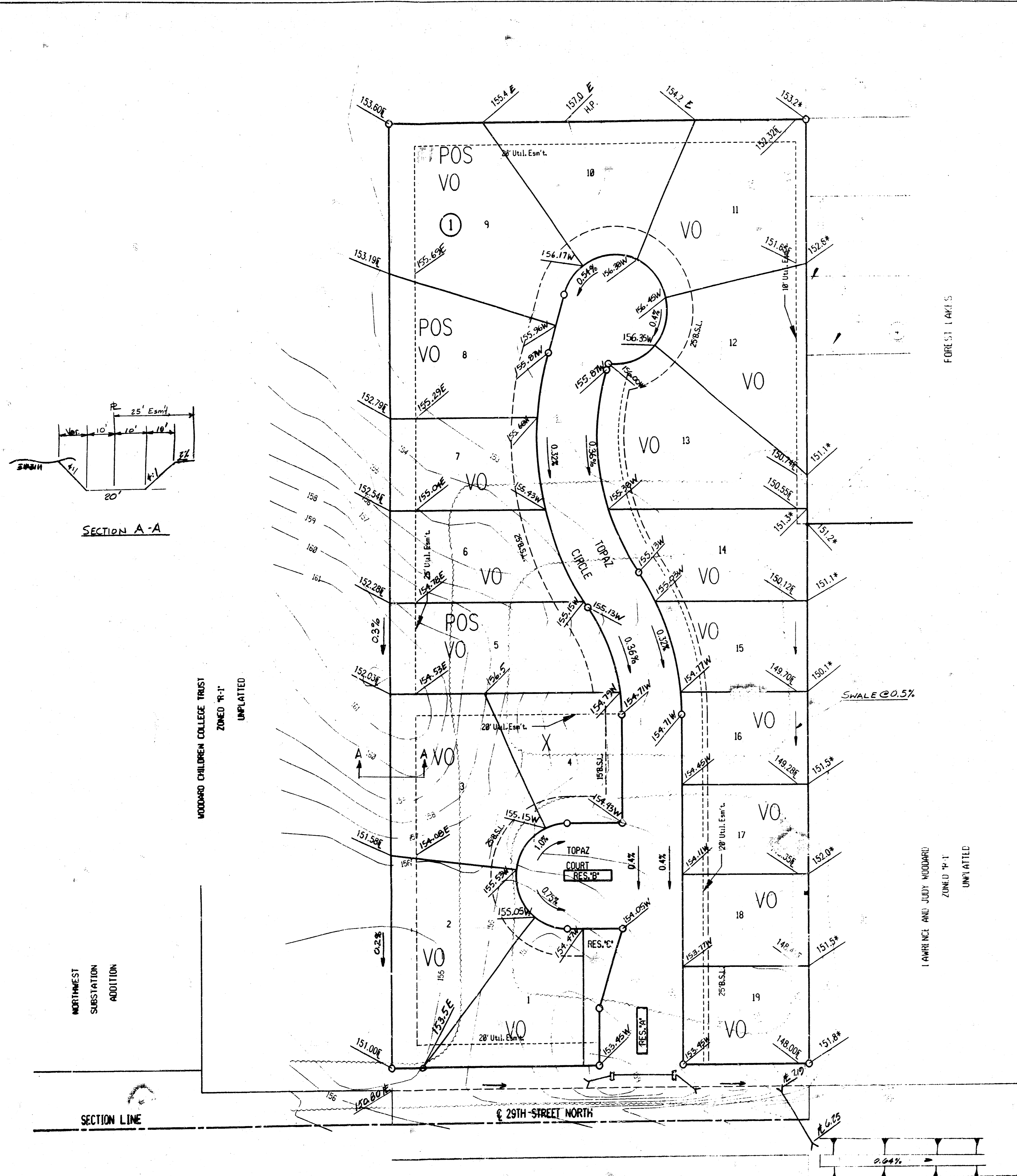
**APPROVED
DRAINAGE PLAN**

**FOUR-CORNER
DRAINAGE PLAN**

OAK RIDGE ADDITION

**OWNER: J.V. VAN ALLEN
R.R. 2 BOX 108
BELLE PLAINE, KANSAS 67013**

**ENGINEER: PROFESSIONAL ENGINEERING CONSULTANTS, P.A.
303 S. TOPEKA
WICHITA, KANSAS 67202**



SCALE: 1"=50'
REVISED 9 FEB 96 MBS
11-1-95

O - IRON SET
TOPOGRAPHY DATE: JUNE, 1995
LEGEND
* - MATCH
E - EASEMENT GRADE
F - FLOW LINE

DATUM B.M. - CHISELED 1" ON N.E. CORNER OF EAST HEADMALL OF RED UNDER RIDGE ROAD AT 280' NORTH OF EAST 1/4 CORNER, SEC. 4, T27S, R10E.
ELEV: 138.46 CITY DATUM
ELEV: 1325.64 M.S.L.

RESERVES 'A', 'B' AND 'C' SHALL PERMIT LANDSCAPING, LIGHTNING AND UTILITIES CONFINED TO EASEMENTS.

UTILITY NOTES
POWER: OVERHEAD ELECTRIC 3 PHASE, 4 WIRE, EAST-WEST ON 29TH STREET APPROX. 25' NORTH OF CENTERLINE.
TELEPHONE: BURIED TELEPHONE EAST-WEST ON 29TH STREET APPROX. 21' SOUTH OF CENTERLINE.
NATURAL GAS: 4" PLASTIC PEOPLES GAS MAIN ON 29TH STREET; WEST END = 117' WEST OF WEST LINE OF FOREST LAKES.
SANITARY SEWER: 8" SANITARY SEWER AVAILABLE 400' EAST OF SOUTHEAST CORNER OF PROPOSED PLAT.