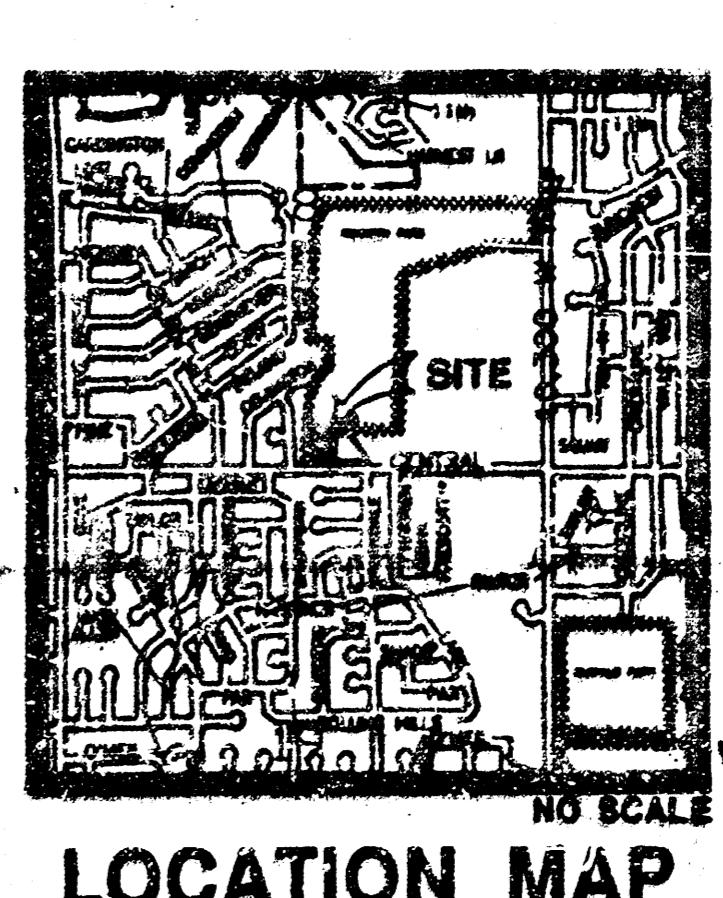
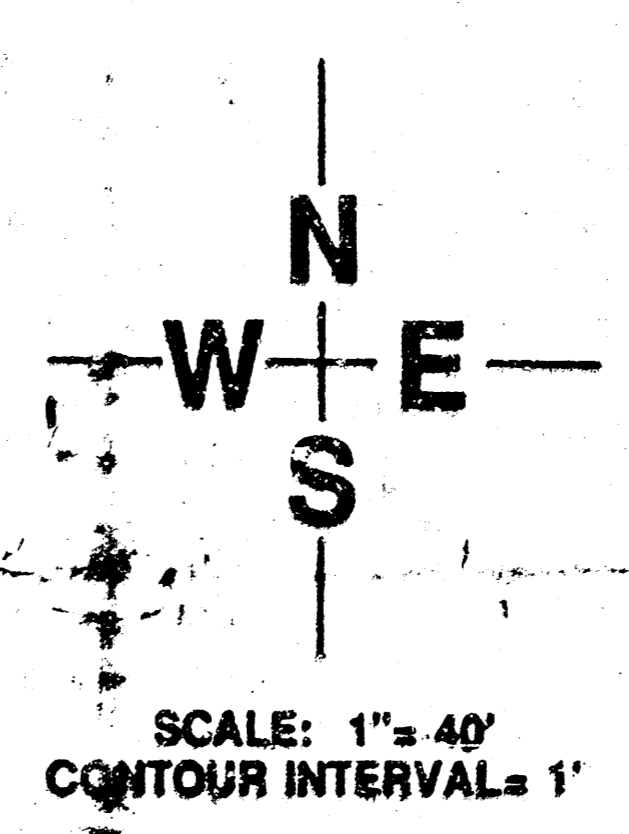


NOTES

- 1) SURVEY AND TOPOGRAPHY PREPARED BY BAUGHMAN COMPANY P.A., MARCH 15, 1991.
- 2) BENCHMARK: TOP OF CURB APPROXIMATELY 24' NORTH OF S.W. COR. S.E. 1/4 SEC. 18, TWP. 27S, R1W. ELEV. 1338.45



APPROVED
DRAINAGE PLAN

PRELIMINARY PLAT
OGDEN
DRAINAGE PLAN
ADDITION

OWNER: MAX & DEBBIE OGDEN - 6423 W. 12TH ST., WICHITA, KANSAS 67212

DRAINAGE PLAN
BAUGHMAN COMPANY, P.A.
 SURVEYING & ENGINEERING
 9-21-91
 8-27-91



BILL G. YUNG DESIGN
 WICHITA, KS 67203
 415 E. 20TH STREET NORTH
 316-854-8597

DATE: AUGUST 21, 1991
 REV.

SHEET TITLE
 PRELIMINARY PLAT

PROJECT
 OGDEN ADDITION

SHEET
 OF