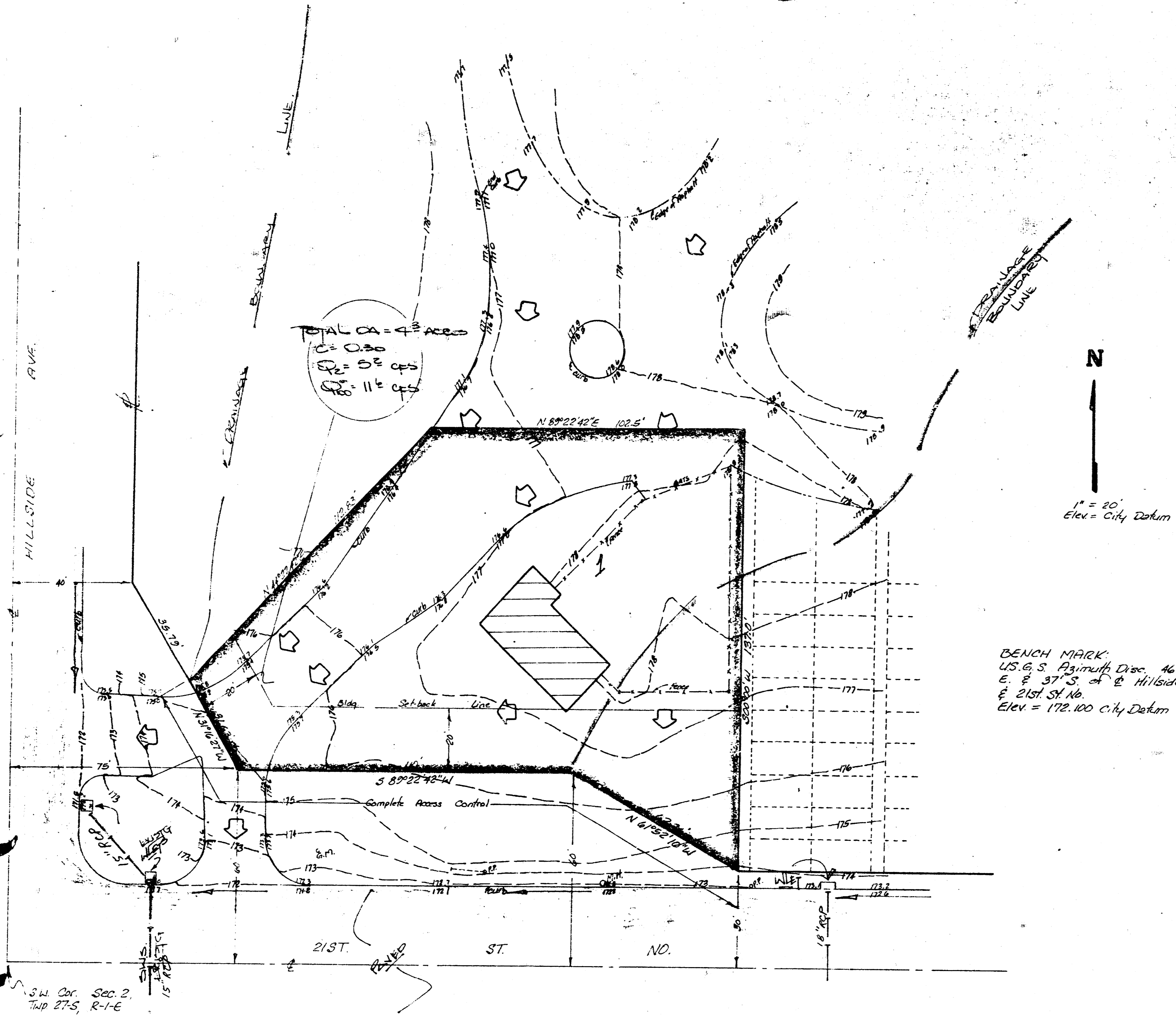


drainage plat

12-26-83



BENCH MARK
 U.S.G.S. Plymouth Dec. 46.3
 6' x 3" x 3" of E Hillside
 E 21st St. No.
 Elev = 172.100 City Datum

SKETCH PLAT
OLD MISSION SERVICES ADD'N.

PART OF THE SW 1/4 OF SEC. 2, TWP. 27-S, R-1-E
 OF THE 6TH P.M., SEDGWICK COUNTY, KANSAS.

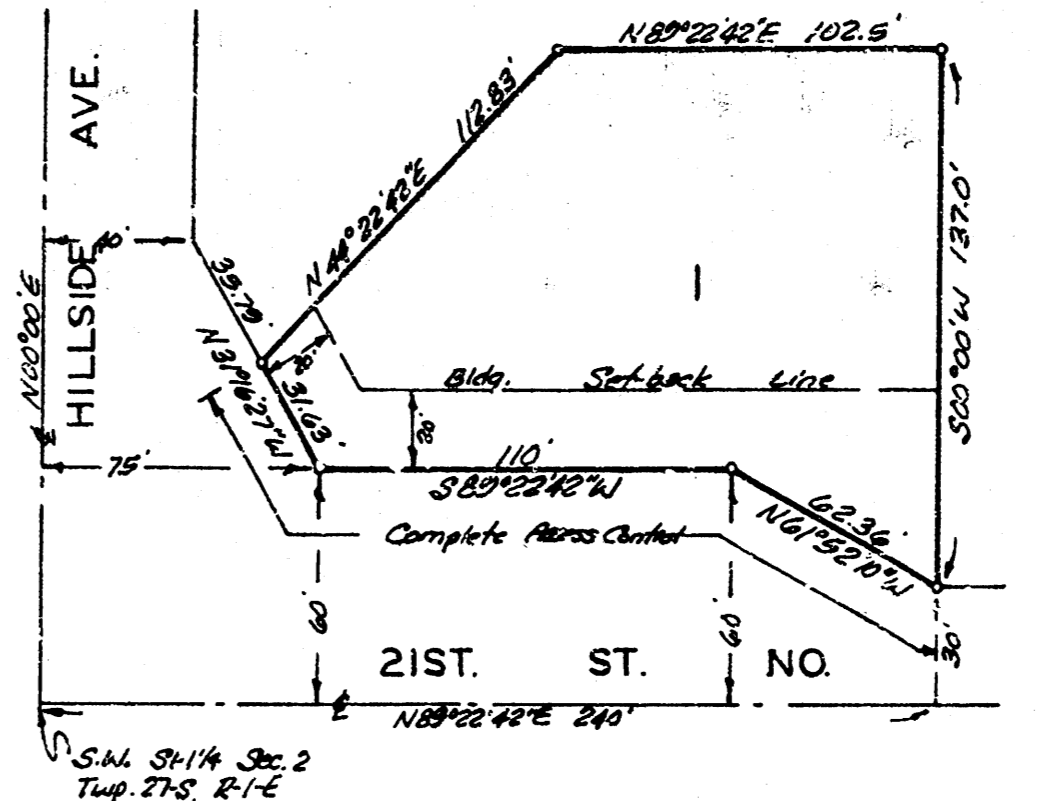
OLD MISSION CEMETERY, INC.

BAUGHMAN COMPANY, P.A.
 SURVEYING & ENGINEERING
 316/262-7271 • 330 LAURA • WICHITA, KANSAS 67211

28 Oct 83

OLD MISSION SERVICE ADDITION

WICHITA, KANSAS.



State of Kansas ss. We, Baughman Company, P.A., Surveyors in and for said county and state do hereby certify that we have surveyed and plotted "OLD MISSION SERVICE ADDITION", Wichita, Kansas, and that the accompanying plat is a true and correct exhibit of the property surveyed, described commencing at the SW Corner of the SW 1/4 of Sec. 2, Twp. 27-S, R-1-E of the 6th P.M., Sedgwick County, Kansas; thence N 89° 22' 42" E, along the south line of said SW 1/4, 240 feet; thence N 00° 00' 00" parallel with the west line of said SW 1/4, 30 feet to a place of beginning; thence N 61° 52' 10" W, 62.36 feet; thence S 89° 22' 42" W, 110 feet; thence N 31° 16' 27" W, 31.03 feet; thence N 44° 22' 42" E, 112.83 feet; thence N 89° 22' 42" E, 102.5 feet; thence S 00° 00' W, 137.0 feet to the place of beginning.

This plat of "OLD MISSION SERVICE ADDITION", Wichita, Kansas, has been submitted to and approved by the Wichita-Sedgwick County, Metropolitan Area Planning Commission, Wichita, Kansas, dated this _____ day of _____, 198__.

Wichita-Sedgwick County Metropolitan Area Planning Commission.
 _____ Chairman
 _____ Secretary

This plat approved and all dedications shown hereon accepted by the Board of Commissioners of the City of Wichita, Kansas, this _____ day of _____, 198__.

 Mayor
 _____ City Clerk

This plat approved and all dedications shown hereon accepted by the Board of Commissioners of Sedgwick County, Kansas, this _____ day of _____, 198__.

 Chairman
 _____ Commissioner
 _____ Commissioner
 _____ County Clerk

Entered on transfer record this _____ day of _____, 198__.

 County Clerk

 Surveyor

Know all men by these presents that we, the undersigned, have caused the land described in the surveyors certificate to be plotted into a lot to be known as "OLD MISSION SERVICE ADDITION", Wichita, Kansas. All abutters rights of access to or from 21st St. No. over and across the south line of Lot 1 and to or from Hillside Ave. over and across the westerly line of Lot 1, are hereby granted to the City of Wichita, Kansas.

 Old Mission Cemetery, Inc.
 _____ President

State of California ss. The foregoing instrument was acknowledged before me, this _____ day of _____, 198__, by _____ President of Old Mission Cemetery, Inc., on behalf of the corporation.

My Comm. Exp. _____
 _____ Notary Public

State of Kansas ss. This is to certify that this plat has been filed for record in the office of the Register of Deeds this _____ day of _____, 198__, at _____ o'clock _____ M.; and is duly recorded.

 Register of Deeds
 _____ Deputy

BAUGHMAN COMPANY, P.A.
 SURVEYING & ENGINEERING
 316/262-7271 • 330 LAURA • WICHITA, KANSAS 67211

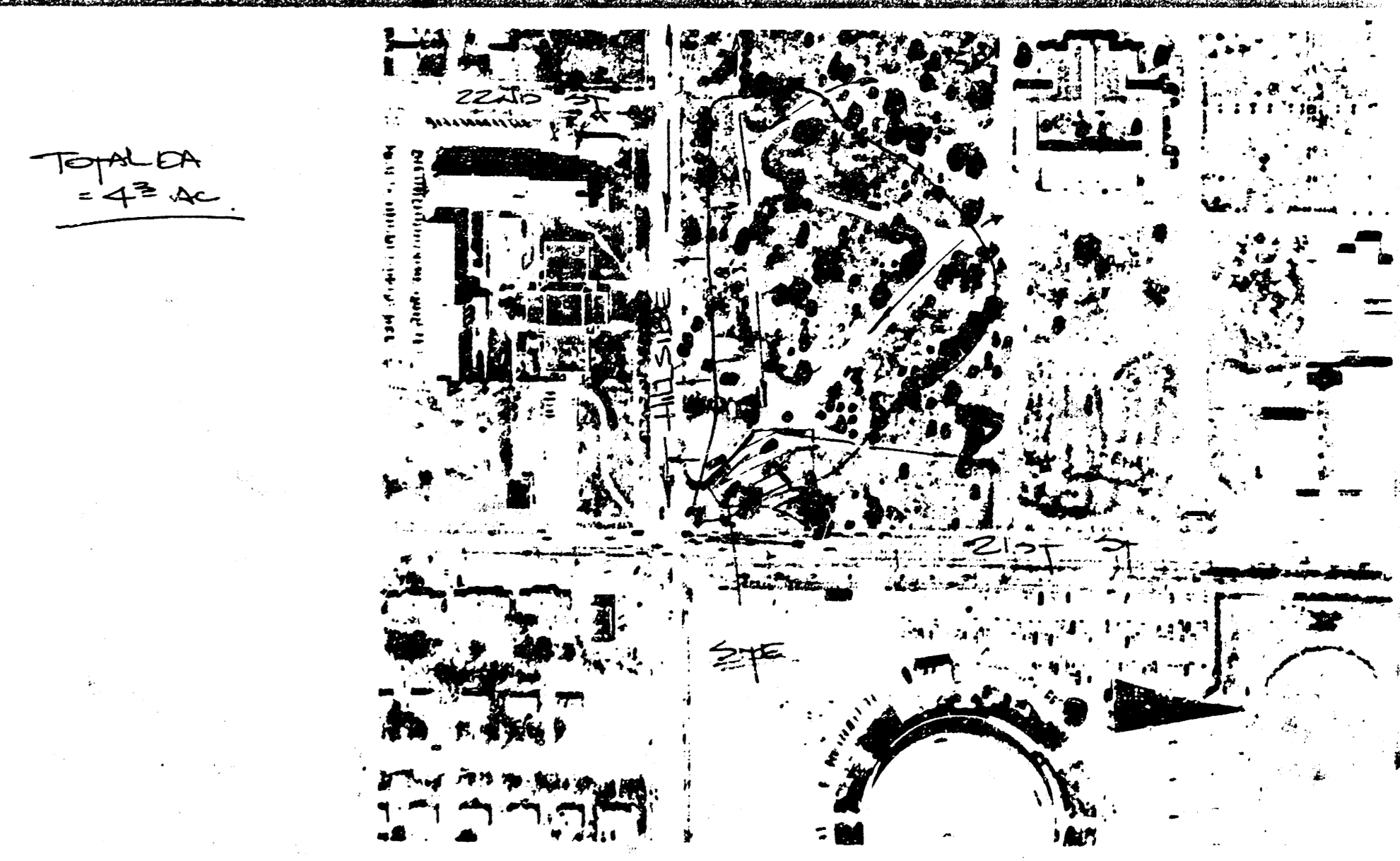
CONFIRMATION MEMO

PROJECT Old Mission Services DATE 11-7-83
ADD'N. JOB NO. _____
 TO CHRIS BEERENSTEIN
 FROM B. Hooper
 REFERENCE Drainage Plat

COPIES TO: _____

Final plat is scheduled for 11-10-83.
 This plat is in a developed cemetery. Soil type is 44 - brown part. Soil group is B. Runoff factor for outside drainage areas is 0.30. Discharge area into this plat & to 21st St. & Hillside is 4.3 ac. Flo's are indicated.

If the driveway is removed which discharges onto 21st & Hillside both, stubs pipe and inlet also to be extended to intercept the indicated flo. The necessary pipe size is 16" min. w. an equivalent of three drop inlets.



TOTAL CA = 4.3 ac

EXHIBIT A