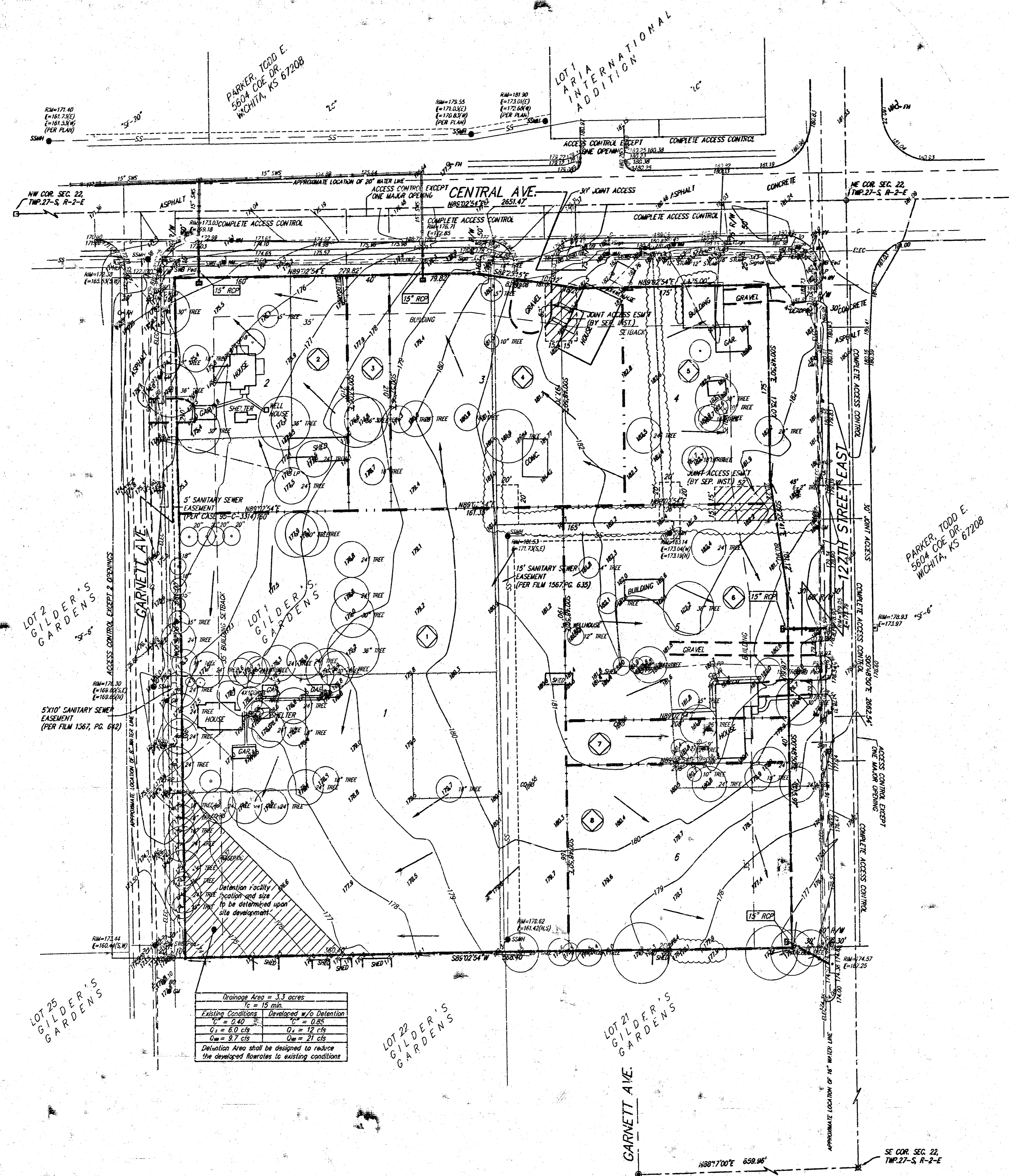


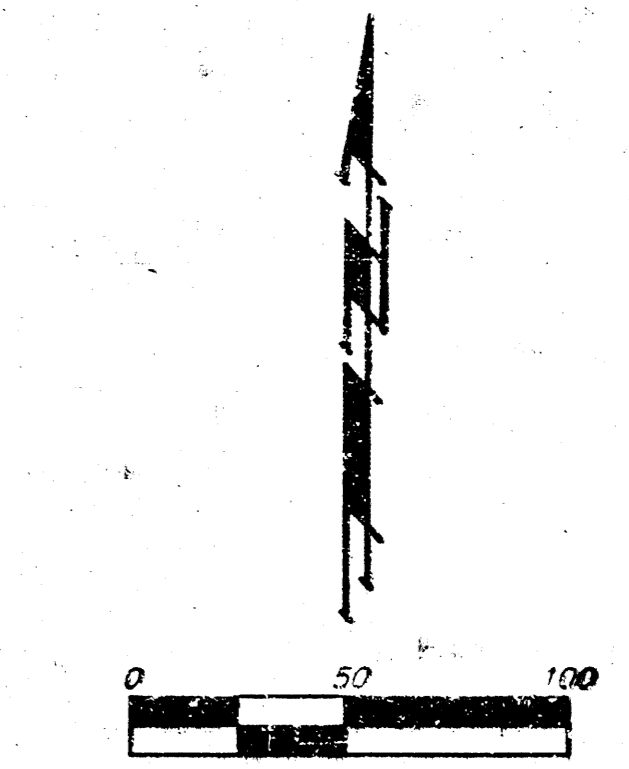
DRAINAGE PLAN

127TH RETAIL ADDITION

WICHITA, SEDGWICK COUNTY, KANSAS

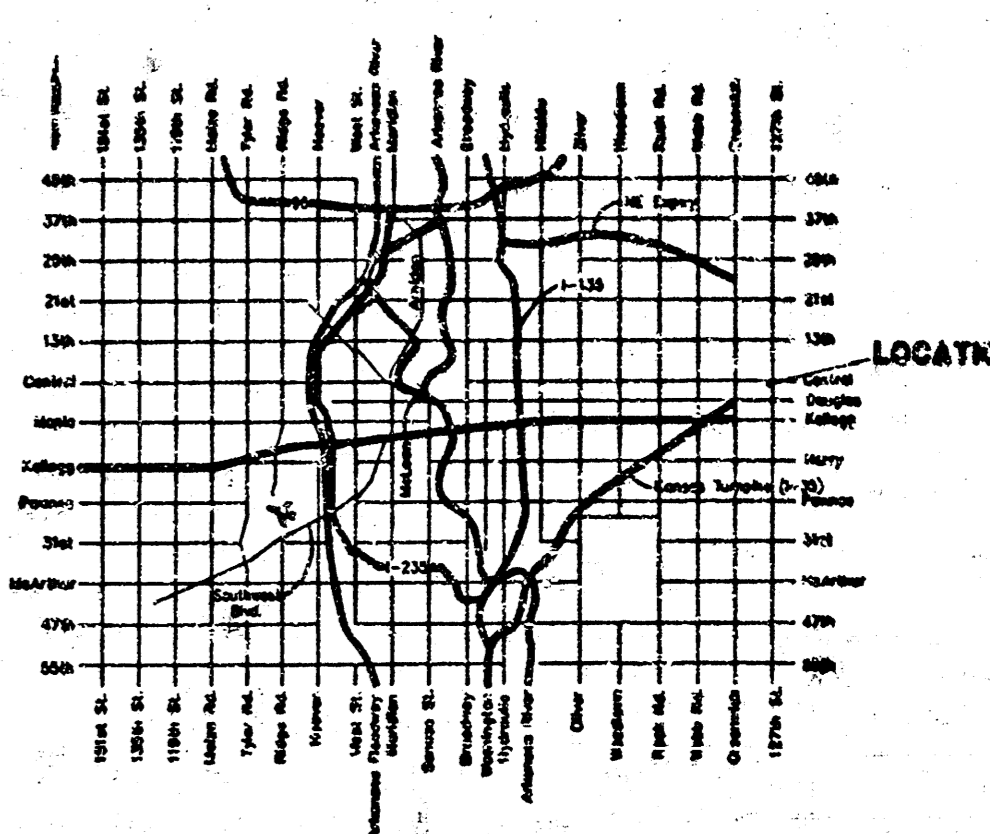
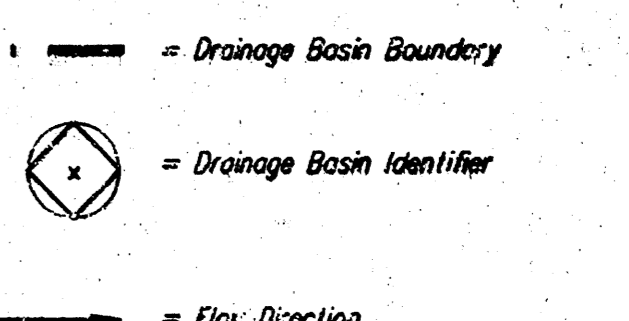


Drainage Area	Area (Acres)	Cs	Cm	Ts (min)	Tm (min)	Tp (min)	Q (cfs)	Q ₁ (cfs)	Q ₂ (cfs)
1	3.3	0.85	0.85	15	4.56	7.6	12.8	20.8	
2	0.8	0.85	0.85	15	4.56	7.6	3.1	5.9	
3	0.2	0.85	0.85	15	4.56	7.6	0.8	1.3	
4	1.0	0.85	0.85	15	4.56	7.6	3.9	6.3	
5	0.6	0.85	0.85	15	4.56	7.6	2.3	3.8	
6	0.9	0.85	0.85	15	4.56	7.6	3.5	5.6	
7	0.2	0.85	0.85	15	4.56	7.6	0.8	1.3	
8	0.8	0.85	0.85	15	4.56	7.6	3.1	5.0	



- = #4 REBAR W/ "BAUGHMAN" CAP (SET)
- = "M NAIL" (FOUND)
- = "1" IRON W/ HANDLE (FOUND)
- = PLUG IN CONCRETE (FOUND)
- = MAG NAIL IN SHOWER (FOUND)
- BENCHMARK: "T" CUT SW COR. TRAFFIC SIGNAL BASE.

- CB = Catch Basin
- CD = Catchout
- CP = Cable TV Pedestal
- EB = Electric Box
- FN = Fire Hydrant
- GM = Gas Meter
- GA = Gas Anchor
- GV = Gas Valve
- HLP = High Line Pole
- ICV = Irrigation Control Valve - Valve Box
- LP = Light Pole
- MB = Mail Box
- MP = Monitoring Well
- PM = Pipe Manhole
- PP = Power Pole
- SP = Signal Pole
- Sign = Sign
- SSMH = Sanitary Sewer Manhole
- SSMH = Sanitary Sewer Manhole
- SSMH = Sanitary Sewer Manhole
- SSMH = Sanitary Sewer Manhole
- T = Tree
- TR = Traffic Bar
- TRM = Traffic Manhole
- WM = Cased Well
- WM = Motor Well
- WM = Water Valve
- WMV = Water Vault
- TRM = Transformer



Drainage Area = 3.3 acres	
T _c = 15 min	
Existing Conditions	Developed w/o Detention
C _s = 0.40	C _s = 0.85
Q ₁ = 6.0 cfs	Q ₁ = 12 cfs
Q ₂ = 3.7 cfs	Q ₂ = 21 cfs

Detention Area shall be designed to reduce the developed flow rates to existing conditions

NOTE: The proposed drainage plan provided herein is a generally defined plan to follow for design. It is recognized and assumed that upon the final design of site layout and grading within this plot that the designer will modify or alter the general drainage plan as necessary in order to implement the installation of the improvements to obtain the most economical design and construction possible.

Revised 18 NOVEMBER 1999
1 NOVEMBER 1999