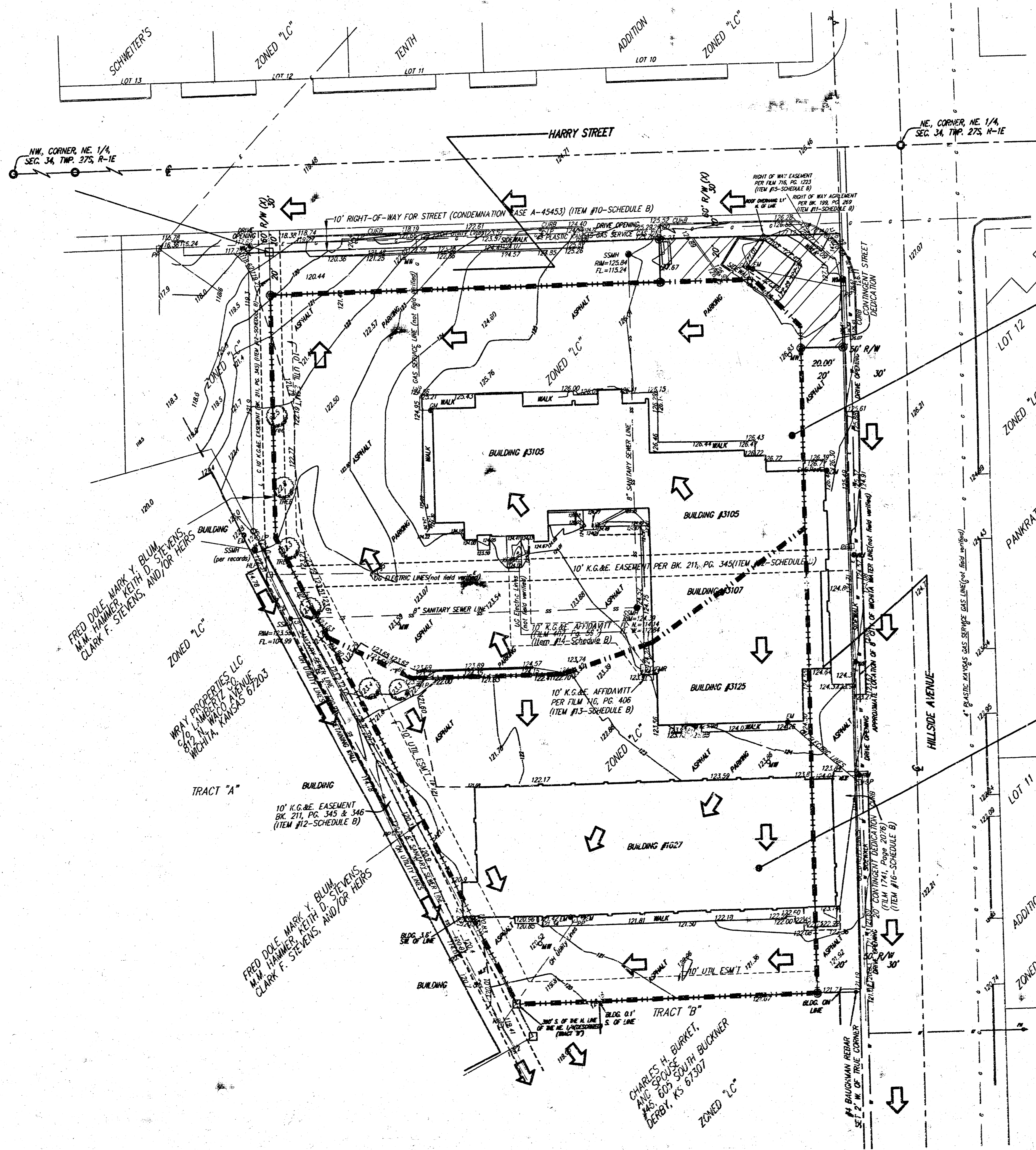



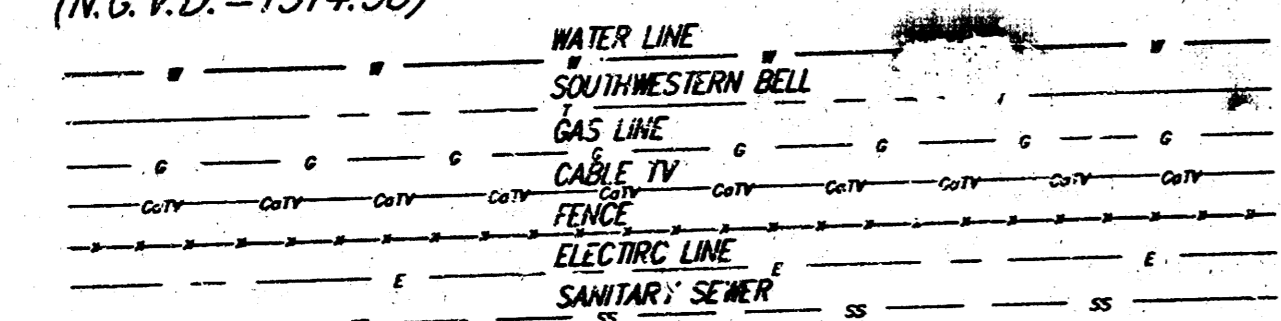
DRAINAGE PLAN OSCO ADDITION HARRY & HILLSIDE WICHITA, SEDGWICK COUNTY, KANSAS




 CONTOUR INTERVAL = 1 FOOT
 DATE OF PREPARATION: 9 APRIL 2001
 DATE OF TOPOGRAPHY: 29 AUGUST 2000

CONTRACT PURCHASER:
 GT Development, LLC
 Ted E. Garrett, Jr.
 P.O. Box 10285
 Albuquerque, NM 87184
 (505) 897-8597

BENCHMARK:
 City of Wichita benchmark. City disc
 southwestern corner of the intersection
 on the south line of the traffic signal
 light concrete base.
 Elev = 127.18 City Datum
 (N.G.V.D. = 1314.58)



- EM = Electric Meter
- FH = Fire Hydrant
- GM = Gas Meter
- GU = Guard Post (Backward)
- GA = Guy Anchor
- HLP = High Line Pole
- LP = Light Pole
- MW = Monitoring Well
- PP = Power Pole
- SP = Signal Pole
- Sign = Sign
- SSMH = Sanitary Sewer Manhole
- SWB Ped = Southwestern Bell Pedestal
- SSSMH = Stormwater Sewer Manhole
- TB = Traffic Box
- TMH = Traffic Manhole
- WM = Water Meter
- WTM = Transformer

DRAINAGE NOTE:
 1. The Existing Soil Type per Soil Survey of Sedgwick County, Kansas is Urban Land Irwin Complex (I-33) and is a Hydrologic Group D.
 2. This Parcel of Land is Not Located in A FEMA Special Flood Hazard Zone Area Per FIRM Map (Community Panel Number: 200328 00258) Effective Date: May 15, 1985.

