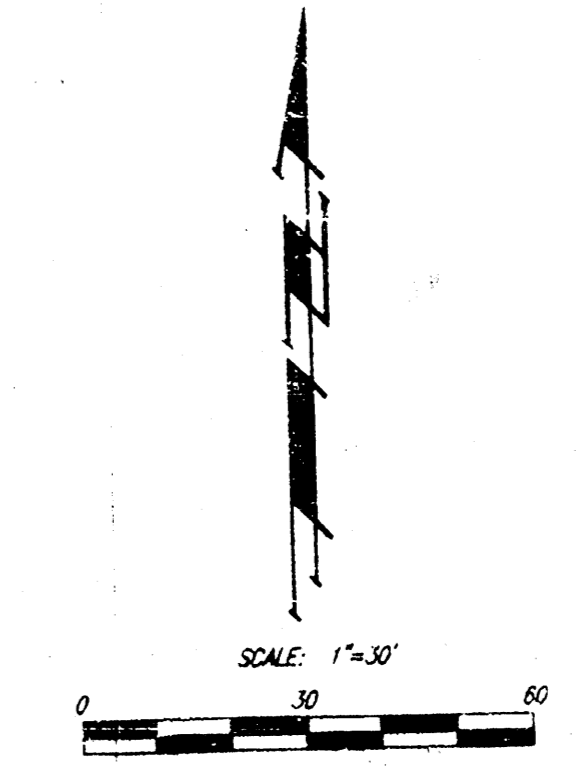
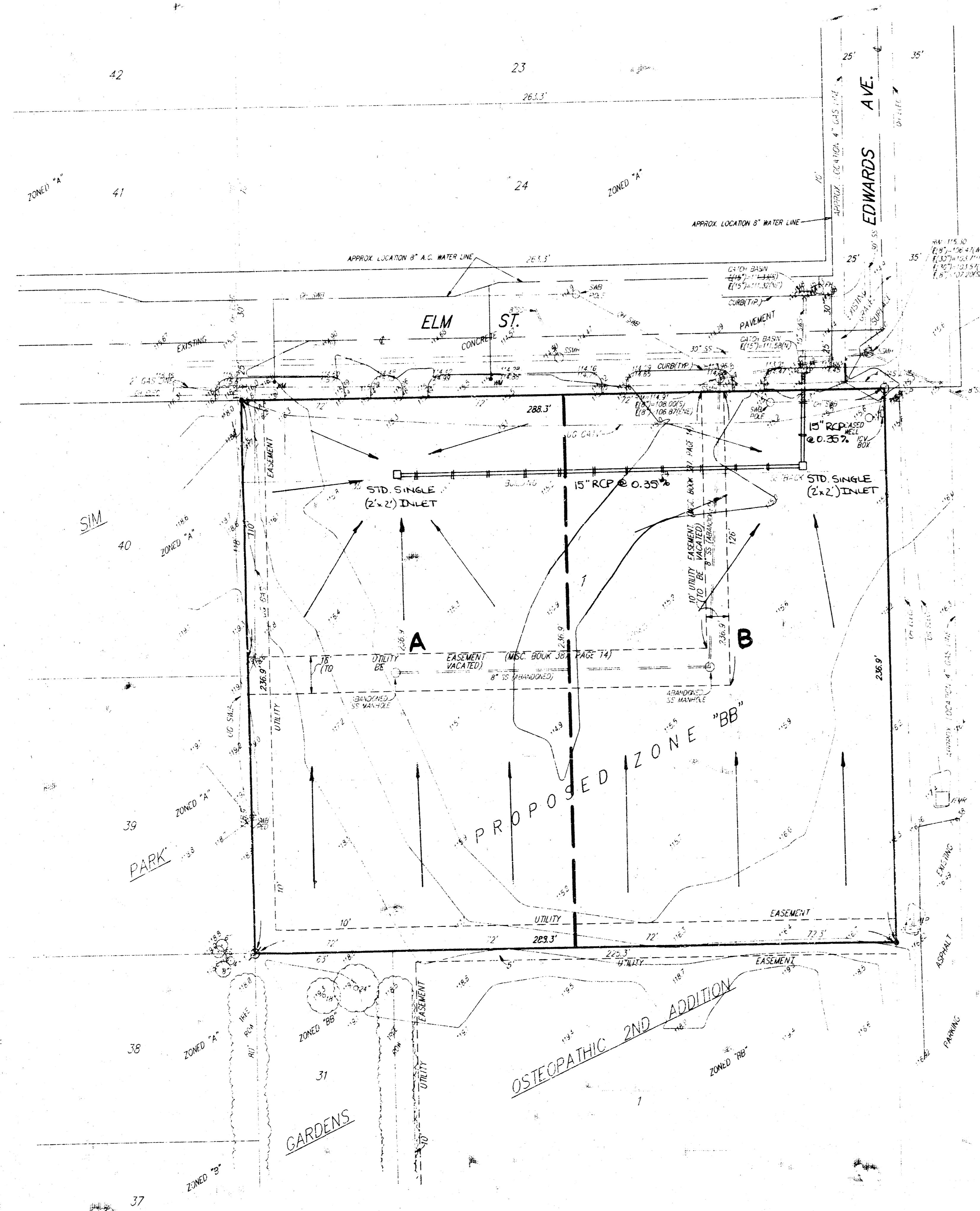


DRAINAGE PLAN

OSTEOPATHIC 3RD ADDITION

WICHITA, SEDGWICK COUNTY, KANSAS



- = #4 REBAR W/ "BAUGHMAN" CAP (SET)
- = 3/4" IRON (FOUND)
- ⊗ = 1" IRON (FOUND)
- CONTOUR INTERVAL = 1 FOOT

LEGEND

- 12" RCP @ 0.35%
- 15" RCP @ 0.35%
- 18" RCP @ 0.35%
- 24" RCP @ 0.35%
- 30" RCP @ 0.35%
- 36" RCP @ 0.35%
- 42" RCP @ 0.35%
- 48" RCP @ 0.35%
- 54" RCP @ 0.35%
- 60" RCP @ 0.35%
- 66" RCP @ 0.35%
- 72" RCP @ 0.35%
- 78" RCP @ 0.35%
- 84" RCP @ 0.35%
- 90" RCP @ 0.35%
- 96" RCP @ 0.35%
- 102" RCP @ 0.35%
- 108" RCP @ 0.35%
- 114" RCP @ 0.35%
- 120" RCP @ 0.35%
- 126" RCP @ 0.35%
- 132" RCP @ 0.35%
- 138" RCP @ 0.35%
- 144" RCP @ 0.35%
- 150" RCP @ 0.35%
- 156" RCP @ 0.35%
- 162" RCP @ 0.35%
- 168" RCP @ 0.35%
- 174" RCP @ 0.35%
- 180" RCP @ 0.35%
- 186" RCP @ 0.35%
- 192" RCP @ 0.35%
- 198" RCP @ 0.35%
- 204" RCP @ 0.35%
- 210" RCP @ 0.35%
- 216" RCP @ 0.35%
- 222" RCP @ 0.35%
- 228" RCP @ 0.35%
- 234" RCP @ 0.35%
- 240" RCP @ 0.35%
- 246" RCP @ 0.35%
- 252" RCP @ 0.35%
- 258" RCP @ 0.35%
- 264" RCP @ 0.35%
- 270" RCP @ 0.35%
- 276" RCP @ 0.35%
- 282" RCP @ 0.35%
- 288" RCP @ 0.35%
- 294" RCP @ 0.35%
- 300" RCP @ 0.35%
- 306" RCP @ 0.35%
- 312" RCP @ 0.35%
- 318" RCP @ 0.35%
- 324" RCP @ 0.35%
- 330" RCP @ 0.35%
- 336" RCP @ 0.35%
- 342" RCP @ 0.35%
- 348" RCP @ 0.35%
- 354" RCP @ 0.35%
- 360" RCP @ 0.35%
- 366" RCP @ 0.35%
- 372" RCP @ 0.35%
- 378" RCP @ 0.35%
- 384" RCP @ 0.35%
- 390" RCP @ 0.35%
- 396" RCP @ 0.35%
- 402" RCP @ 0.35%
- 408" RCP @ 0.35%
- 414" RCP @ 0.35%
- 420" RCP @ 0.35%
- 426" RCP @ 0.35%
- 432" RCP @ 0.35%
- 438" RCP @ 0.35%
- 444" RCP @ 0.35%
- 450" RCP @ 0.35%
- 456" RCP @ 0.35%
- 462" RCP @ 0.35%
- 468" RCP @ 0.35%
- 474" RCP @ 0.35%
- 480" RCP @ 0.35%
- 486" RCP @ 0.35%
- 492" RCP @ 0.35%
- 498" RCP @ 0.35%
- 504" RCP @ 0.35%
- 510" RCP @ 0.35%
- 516" RCP @ 0.35%
- 522" RCP @ 0.35%
- 528" RCP @ 0.35%
- 534" RCP @ 0.35%
- 540" RCP @ 0.35%
- 546" RCP @ 0.35%
- 552" RCP @ 0.35%
- 558" RCP @ 0.35%
- 564" RCP @ 0.35%
- 570" RCP @ 0.35%
- 576" RCP @ 0.35%
- 582" RCP @ 0.35%
- 588" RCP @ 0.35%
- 594" RCP @ 0.35%
- 600" RCP @ 0.35%
- 606" RCP @ 0.35%
- 612" RCP @ 0.35%
- 618" RCP @ 0.35%
- 624" RCP @ 0.35%
- 630" RCP @ 0.35%
- 636" RCP @ 0.35%
- 642" RCP @ 0.35%
- 648" RCP @ 0.35%
- 654" RCP @ 0.35%
- 660" RCP @ 0.35%
- 666" RCP @ 0.35%
- 672" RCP @ 0.35%
- 678" RCP @ 0.35%
- 684" RCP @ 0.35%
- 690" RCP @ 0.35%
- 696" RCP @ 0.35%
- 702" RCP @ 0.35%
- 708" RCP @ 0.35%
- 714" RCP @ 0.35%
- 720" RCP @ 0.35%
- 726" RCP @ 0.35%
- 732" RCP @ 0.35%
- 738" RCP @ 0.35%
- 744" RCP @ 0.35%
- 750" RCP @ 0.35%
- 756" RCP @ 0.35%
- 762" RCP @ 0.35%
- 768" RCP @ 0.35%
- 774" RCP @ 0.35%
- 780" RCP @ 0.35%
- 786" RCP @ 0.35%
- 792" RCP @ 0.35%
- 798" RCP @ 0.35%
- 804" RCP @ 0.35%
- 810" RCP @ 0.35%
- 816" RCP @ 0.35%
- 822" RCP @ 0.35%
- 828" RCP @ 0.35%
- 834" RCP @ 0.35%
- 840" RCP @ 0.35%
- 846" RCP @ 0.35%
- 852" RCP @ 0.35%
- 858" RCP @ 0.35%
- 864" RCP @ 0.35%
- 870" RCP @ 0.35%
- 876" RCP @ 0.35%
- 882" RCP @ 0.35%
- 888" RCP @ 0.35%
- 894" RCP @ 0.35%
- 900" RCP @ 0.35%
- 906" RCP @ 0.35%
- 912" RCP @ 0.35%
- 918" RCP @ 0.35%
- 924" RCP @ 0.35%
- 930" RCP @ 0.35%
- 936" RCP @ 0.35%
- 942" RCP @ 0.35%
- 948" RCP @ 0.35%
- 954" RCP @ 0.35%
- 960" RCP @ 0.35%
- 966" RCP @ 0.35%
- 972" RCP @ 0.35%
- 978" RCP @ 0.35%
- 984" RCP @ 0.35%
- 990" RCP @ 0.35%
- 996" RCP @ 0.35%
- 1002" RCP @ 0.35%
- 1008" RCP @ 0.35%
- 1014" RCP @ 0.35%
- 1020" RCP @ 0.35%
- 1026" RCP @ 0.35%
- 1032" RCP @ 0.35%
- 1038" RCP @ 0.35%
- 1044" RCP @ 0.35%
- 1050" RCP @ 0.35%
- 1056" RCP @ 0.35%
- 1062" RCP @ 0.35%
- 1068" RCP @ 0.35%
- 1074" RCP @ 0.35%
- 1080" RCP @ 0.35%
- 1086" RCP @ 0.35%
- 1092" RCP @ 0.35%
- 1098" RCP @ 0.35%
- 1104" RCP @ 0.35%
- 1110" RCP @ 0.35%
- 1116" RCP @ 0.35%
- 1122" RCP @ 0.35%
- 1128" RCP @ 0.35%
- 1134" RCP @ 0.35%
- 1140" RCP @ 0.35%
- 1146" RCP @ 0.35%
- 1152" RCP @ 0.35%
- 1158" RCP @ 0.35%
- 1164" RCP @ 0.35%
- 1170" RCP @ 0.35%
- 1176" RCP @ 0.35%
- 1182" RCP @ 0.35%
- 1188" RCP @ 0.35%
- 1194" RCP @ 0.35%
- 1200" RCP @ 0.35%
- 1206" RCP @ 0.35%
- 1212" RCP @ 0.35%
- 1218" RCP @ 0.35%
- 1224" RCP @ 0.35%
- 1230" RCP @ 0.35%
- 1236" RCP @ 0.35%
- 1242" RCP @ 0.35%
- 1248" RCP @ 0.35%
- 1254" RCP @ 0.35%
- 1260" RCP @ 0.35%
- 1266" RCP @ 0.35%
- 1272" RCP @ 0.35%
- 1278" RCP @ 0.35%
- 1284" RCP @ 0.35%
- 1290" RCP @ 0.35%
- 1296" RCP @ 0.35%
- 1302" RCP @ 0.35%
- 1308" RCP @ 0.35%
- 1314" RCP @ 0.35%
- 1320" RCP @ 0.35%
- 1326" RCP @ 0.35%
- 1332" RCP @ 0.35%
- 1338" RCP @ 0.35%
- 1344" RCP @ 0.35%
- 1350" RCP @ 0.35%
- 1356" RCP @ 0.35%
- 1362" RCP @ 0.35%
- 1368" RCP @ 0.35%
- 1374" RCP @ 0.35%
- 1380" RCP @ 0.35%
- 1386" RCP @ 0.35%
- 1392" RCP @ 0.35%
- 1398" RCP @ 0.35%
- 1404" RCP @ 0.35%
- 1410" RCP @ 0.35%
- 1416" RCP @ 0.35%
- 1422" RCP @ 0.35%
- 1428" RCP @ 0.35%
- 1434" RCP @ 0.35%
- 1440" RCP @ 0.35%
- 1446" RCP @ 0.35%
- 1452" RCP @ 0.35%
- 1458" RCP @ 0.35%
- 1464" RCP @ 0.35%
- 1470" RCP @ 0.35%
- 1476" RCP @ 0.35%
- 1482" RCP @ 0.35%
- 1488" RCP @ 0.35%
- 1494" RCP @ 0.35%
- 1500" RCP @ 0.35%
- 1506" RCP @ 0.35%
- 1512" RCP @ 0.35%
- 1518" RCP @ 0.35%
- 1524" RCP @ 0.35%
- 1530" RCP @ 0.35%
- 1536" RCP @ 0.35%
- 1542" RCP @ 0.35%
- 1548" RCP @ 0.35%
- 1554" RCP @ 0.35%
- 1560" RCP @ 0.35%
- 1566" RCP @ 0.35%
- 1572" RCP @ 0.35%
- 1578" RCP @ 0.35%
- 1584" RCP @ 0.35%
- 1590" RCP @ 0.35%
- 1596" RCP @ 0.35%
- 1602" RCP @ 0.35%
- 1608" RCP @ 0.35%
- 1614" RCP @ 0.35%
- 1620" RCP @ 0.35%
- 1626" RCP @ 0.35%
- 1632" RCP @ 0.35%
- 1638" RCP @ 0.35%
- 1644" RCP @ 0.35%
- 1650" RCP @ 0.35%
- 1656" RCP @ 0.35%
- 1662" RCP @ 0.35%
- 1668" RCP @ 0.35%
- 1674" RCP @ 0.35%
- 1680" RCP @ 0.35%
- 1686" RCP @ 0.35%
- 1692" RCP @ 0.35%
- 1698" RCP @ 0.35%
- 1704" RCP @ 0.35%
- 1710" RCP @ 0.35%
- 1716" RCP @ 0.35%
- 1722" RCP @ 0.35%
- 1728" RCP @ 0.35%
- 1734" RCP @ 0.35%
- 1740" RCP @ 0.35%
- 1746" RCP @ 0.35%
- 1752" RCP @ 0.35%
- 1758" RCP @ 0.35%
- 1764" RCP @ 0.35%
- 1770" RCP @ 0.35%
- 1776" RCP @ 0.35%
- 1782" RCP @ 0.35%
- 1788" RCP @ 0.35%
- 1794" RCP @ 0.35%
- 1800" RCP @ 0.35%
- 1806" RCP @ 0.35%
- 1812" RCP @ 0.35%
- 1818" RCP @ 0.35%
- 1824" RCP @ 0.35%
- 1830" RCP @ 0.35%
- 1836" RCP @ 0.35%
- 1842" RCP @ 0.35%
- 1848" RCP @ 0.35%
- 1854" RCP @ 0.35%
- 1860" RCP @ 0.35%
- 1866" RCP @ 0.35%
- 1872" RCP @ 0.35%
- 1878" RCP @ 0.35%
- 1884" RCP @ 0.35%
- 1890" RCP @ 0.35%
- 1896" RCP @ 0.35%
- 1902" RCP @ 0.35%
- 1908" RCP @ 0.35%
- 1914" RCP @ 0.35%
- 1920" RCP @ 0.35%
- 1926" RCP @ 0.35%
- 1932" RCP @ 0.35%
- 1938" RCP @ 0.35%
- 1944" RCP @ 0.35%
- 1950" RCP @ 0.35%
- 1956" RCP @ 0.35%
- 1962" RCP @ 0.35%
- 1968" RCP @ 0.35%
- 1974" RCP @ 0.35%
- 1980" RCP @ 0.35%
- 1986" RCP @ 0.35%
- 1992" RCP @ 0.35%
- 1998" RCP @ 0.35%
- 2004" RCP @ 0.35%
- 2010" RCP @ 0.35%
- 2016" RCP @ 0.35%
- 2022" RCP @ 0.35%
- 2028" RCP @ 0.35%
- 2034" RCP @ 0.35%
- 2040" RCP @ 0.35%
- 2046" RCP @ 0.35%
- 2052" RCP @ 0.35%
- 2058" RCP @ 0.35%
- 2064" RCP @ 0.35%
- 2070" RCP @ 0.35%
- 2076" RCP @ 0.35%
- 2082" RCP @ 0.35%
- 2088" RCP @ 0.35%
- 2094" RCP @ 0.35%
- 2100" RCP @ 0.35%
- 2106" RCP @ 0.35%
- 2112" RCP @ 0.35%
- 2118" RCP @ 0.35%
- 2124" RCP @ 0.35%
- 2130" RCP @ 0.35%
- 2136" RCP @ 0.35%
- 2142" RCP @ 0.35%
- 2148" RCP @ 0.35%
- 2154" RCP @ 0.35%
- 2160" RCP @ 0.35%
- 2166" RCP @ 0.35%
- 2172" RCP @ 0.35%
- 2178" RCP @ 0.35%
- 2184" RCP @ 0.35%
- 2190" RCP @ 0.35%
- 2196" RCP @ 0.35%
- 2202" RCP @ 0.35%
- 2208" RCP @ 0.35%
- 2214" RCP @ 0.35%
- 2220" RCP @ 0.35%
- 2226" RCP @ 0.35%
- 2232" RCP @ 0.35%
- 2238" RCP @ 0.35%
- 2244" RCP @ 0.35%
- 2250" RCP @ 0.35%
- 2256" RCP @ 0.35%
- 2262" RCP @ 0.35%
- 2268" RCP @ 0.35%
- 2274" RCP @ 0.35%
- 2280" RCP @ 0.35%
- 2286" RCP @ 0.35%
- 2292" RCP @ 0.35%
- 2298" RCP @ 0.35%
- 2304" RCP @ 0.35%
- 2310" RCP @ 0.35%
- 2316" RCP @ 0.35%
- 2322" RCP @ 0.35%
- 2328" RCP @ 0.35%
- 2334" RCP @ 0.35%
- 2340" RCP @ 0.35%
- 2346" RCP @ 0.35%
- 2352" RCP @ 0.35%
- 2358" RCP @ 0.35%
- 2364" RCP @ 0.35%
- 2370" RCP @ 0.35%
- 2376" RCP @ 0.35%
- 2382" RCP @ 0.35%
- 2388" RCP @ 0.35%
- 2394" RCP @ 0.35%
- 2400" RCP @ 0.35%
- 2406" RCP @ 0.35%
- 2412" RCP @ 0.35%
- 2418" RCP @ 0.35%
- 2424" RCP @ 0.35%
- 2430" RCP @ 0.35%
- 2436" RCP @ 0.35%
- 2442" RCP @ 0.35%
- 2448" RCP @ 0.35%
- 2454" RCP @ 0.35%
- 2460" RCP @ 0.35%
- 2466" RCP @ 0.35%
- 2472" RCP @ 0.35%
- 2478" RCP @ 0.35%
- 2484" RCP @ 0.35%
- 2490" RCP @ 0.35%
- 2496" RCP @ 0.35%
- 2502" RCP @ 0.35%
- 2508" RCP @ 0.35%
- 2514" RCP @ 0.35%
- 2520" RCP @ 0.35%
- 2526" RCP @ 0.35%
- 2532" RCP @ 0.35%
- 2538" RCP @ 0.35%
- 2544" RCP @ 0.35%
- 2550" RCP @ 0.35%
- 2556" RCP @ 0.35%
- 2562" RCP @ 0.35%
- 2568" RCP @ 0.35%
- 2574" RCP @ 0.35%
- 2580" RCP @ 0.35%
- 2586" RCP @ 0.35%
- 2592" RCP @ 0.35%
- 2598" RCP @ 0.35%
- 2604" RCP @ 0.35%
- 2610" RCP @ 0.35%
- 2616" RCP @ 0.35%
- 2622" RCP @ 0.35%
- 2628" RCP @ 0.35%
- 2634" RCP @ 0.35%
- 2640" RCP @ 0.35%
- 2646" RCP @ 0.35%
- 2652" RCP @ 0.35%
- 2658" RCP @ 0.35%
- 2664" RCP @ 0.35%
- 2670" RCP @ 0.35%
- 2676" RCP @ 0.35%
- 2682" RCP @ 0.35%
- 2688" RCP @ 0.35%
- 2694" RCP @ 0.35%
- 2700" RCP @ 0.35%
- 2706" RCP @ 0.35%
- 2712" RCP @ 0.35%
- 2718" RCP @ 0.35%
- 2724" RCP @ 0.35%
- 2730" RCP @ 0.35%
- 2736" RCP @ 0.35%
- 2742" RCP @ 0.35%
- 2748" RCP @ 0.35%
- 2754" RCP @ 0.35%
- 2760" RCP @ 0.35%
- 2766" RCP @ 0.35%
- 2772" RCP @ 0.35%
- 2778" RCP @ 0.35%
- 2784" RCP @ 0.35%
- 2790" RCP @ 0.35%
- 2796" RCP @ 0.35%
- 2802" RCP @ 0.35%
- 2808" RCP @ 0.35%
- 2814" RCP @ 0.35%
- 2820" RCP @ 0.35%
- 2826" RCP @ 0.35%
- 2832" RCP @ 0.35%
- 2838" RCP @ 0.35%
- 2844" RCP @ 0.35%
- 2850" RCP @ 0.35%
- 2856" RCP @ 0.35%
- 2862" RCP @ 0.35%
- 2868" RCP @ 0.35%
- 2874" RCP @ 0.35%
- 2880" RCP @ 0.35%
- 2886" RCP @ 0.35%
- 2892" RCP @ 0.35%
- 2898" RCP @ 0.35%
- 2904" RCP @ 0.35%
- 2910" RCP @ 0.35%
- 2916" RCP @ 0.35%
- 2922" RCP @ 0.35%
- 2928" RCP @ 0.35%
- 2934" RCP @ 0.35%
- 2940" RCP @ 0.35%
- 2946" RCP @ 0.35%
- 2952" RCP @ 0.35%
- 2958" RCP @ 0.35%
- 2964" RCP @ 0.35%
- 2970" RCP @ 0.35%
- 2976" RCP @ 0.35%
- 2982" RCP @ 0.35%
- 2988" RCP @ 0.35%
- 2994" RCP @ 0.35%
- 3000" RCP @ 0.35%

DRAINAGE DATA

Sub-Area	Area (ac.)	C_p	C_{100}	C	C_{100}	C_{100}
A	0.78	4.56	7.37	0.9	3.2	5.2
B	0.78	4.56	7.37	0.9	3.2	5.2

LAND: HYDROLOGIC HEALTH SYSTEM INC. A CITY RESIDENT DRAINAGE DIST. # 2224 EDWARDS & CENTRAL WICHITA, KS 67201 PH # 316-946-5000

LEGAL DESCRIPTION: A REPLAT OF LOTS 24, 25, 26, 27, AND 28 IN SIM PARK GARDENS, SEDGWICK COUNTY, KANSAS

BENCHMARK: REFERENCE BENCHMARK EDWARDS & CENTRAL "T" OUT TOP OF CURB 102.5 W 15.5' E OF E. BIRTH ELEV. = 118.11 (117.74 DATUM)

ON-SITE BENCHMARK: R.P. SPINE IN NE COR. OF NE PROP. COR. ELEV. = 117.03 (117.74 DATUM)

