

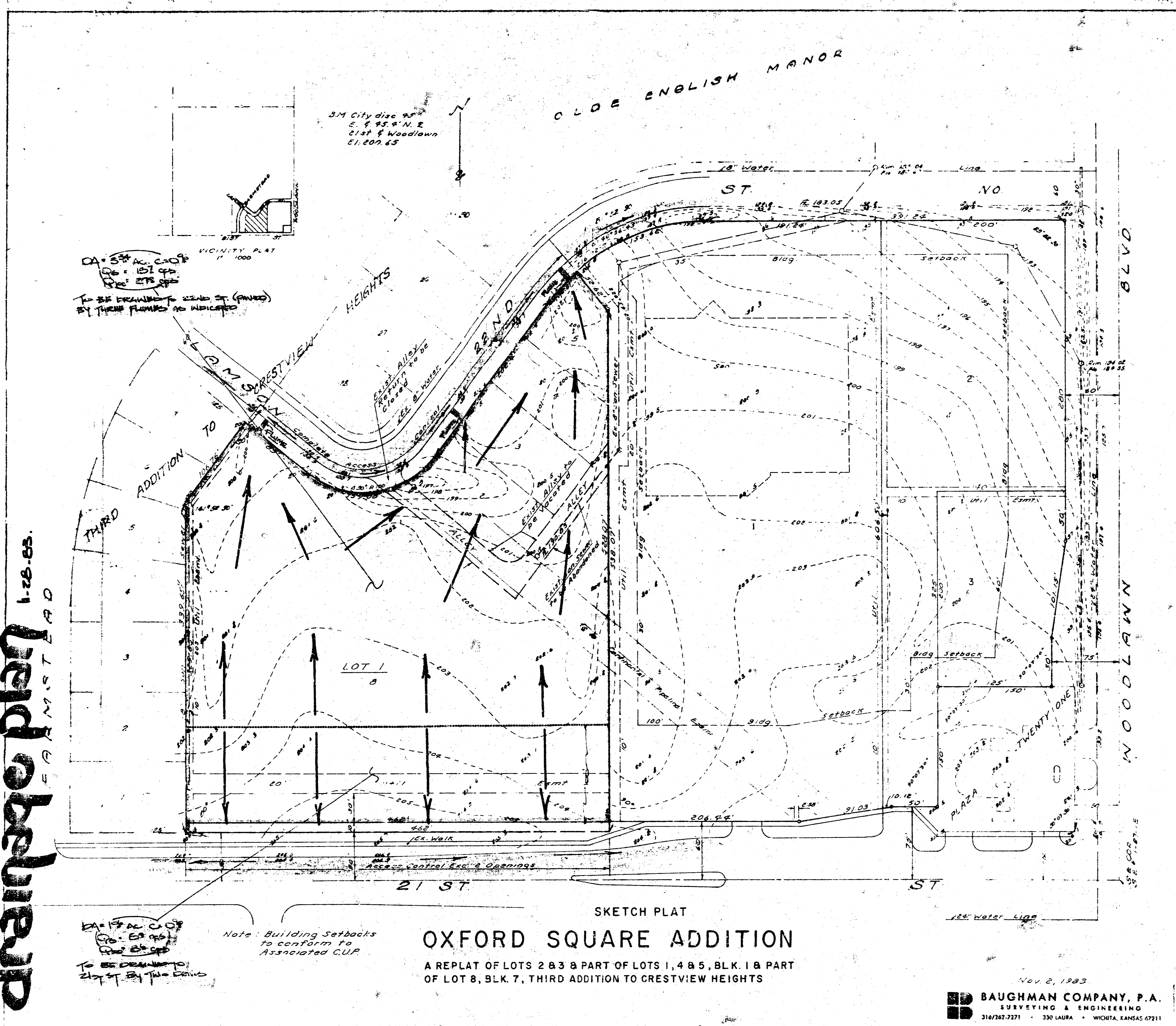
BAUGHMAN COMPANY, P.A.
SURVEYING & ENGINEERING
316/262-7271 • 330 LAURA • WICHITA, KANSAS 67211

CONFIRMATION MEMO

PROJECT	OXFORD SQUARE ADDITION	DATE	11-29-83
TO	Chris Breitenstein	COPIES TO	
FROM	N. Brent Wooten		
REFERENCE	Drainage Plan		

Plat is scheduled for subdivision for Dec. 8, 1983.
The lot will be developed as a shopping center with a runoff factor of 0.90. Approximately the south 100 feet of the lot will drain south to 21st St. thru two drives. The north portion of the lot will drain north to 22nd Street thru three flumes. Both streets are paved and drain east and west at the mid-block area to existing or new storm sewers.

drainage plan
 1-28-83
 E.A.M. ST. 100



SKETCH PLAT
OXFORD SQUARE ADDITION

A REPLAT OF LOTS 2 & 3 & PART OF LOTS 1, 4 & 5, BLK. 1 & PART OF LOT 8, BLK. 7, THIRD ADDITION TO CRESTVIEW HEIGHTS

Note: Building Setbacks to conform to Associated CUP

Nov. 2, 1983
BAUGHMAN COMPANY, P.A.
SURVEYING & ENGINEERING
316/262-7271 • 330 LAURA • WICHITA, KANSAS 67211