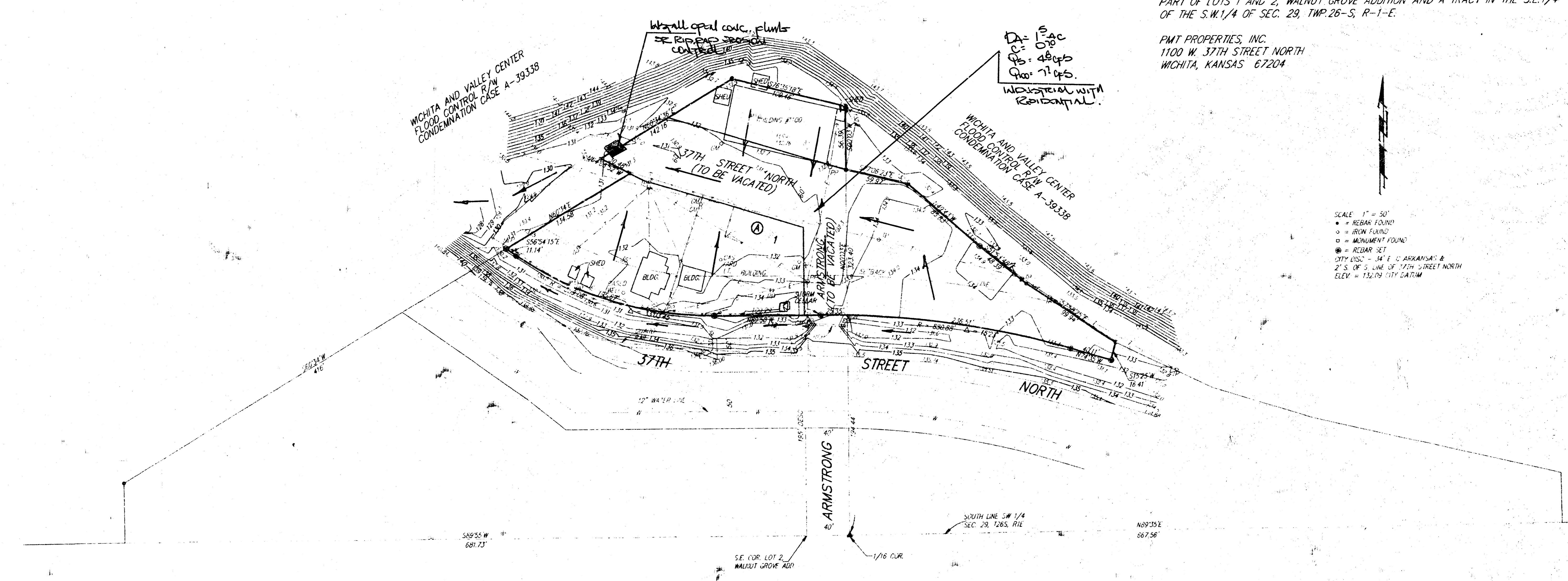


SKETCH PLAT PMT ADDITION

WICHITA, SEDGWICK COUNTY, KANSAS

PART OF LOTS 1 AND 2, WALNUT GROVE ADDITION AND A TRACT IN THE S.E. 1/4 OF THE S.W. 1/4 OF SEC. 29, TWP. 26-S, R-1-E.

PMT PROPERTIES, INC.
1100 W. 37TH STREET NORTH
WICHITA, KANSAS 67204



**DRAINAGE
— PLAN —**