

# PARK GLEN ADDITION

WICHITA, SEDGWICK COUNTY, KANSAS

State of Kansas) SS We, Baughman Company, P.A., Surveyors in  
Sedgwick County) and State do hereby certify that we have surveyed  
and platted "PARK GLEN ADDITION", Wichita, Sedgwick County, Kansas  
and that the accompanying plat is a true and correct exhibit of the  
property surveyed, described and being a replat of Lots 17, 18, 19,  
20, 21, 22, 23, 24, 25, and 26, Block 14, and Lot 1, Block 15, and  
Lot 1, Block 16, and Lots 1, 2, 3, and Lots 12, 13, 14, 15, 16, 17,  
18, and 19, Block 17, Pawnee Mesa Addition, an Addition to Sedgwick  
County, Kansas, together with all of Blake, adjacent to said Blocks  
15, 16, and 17 and together with all of Haskell, adjacent to said  
Blocks 16 and 17.

Existing public easements and dedications being vacated by  
virtue of K.S.A. 12-512(b).

Baughman Company, P.A.

Date \_\_\_\_\_ Surveyor  
Mark A. Savoy

This plat of "PARK GLEN ADDITION", Wichita,  
Sedgwick County, Kansas has been submitted to and approved by  
the Wichita-Sedgwick County Metropolitan Area Planning Commission,  
Wichita, Kansas.

Dated this \_\_\_\_\_ day of \_\_\_\_\_ 1992.  
Wichita-Sedgwick County Metropolitan Area Planning Commission

\_\_\_\_\_  
Chairman  
Christopher J. Gobel  
\_\_\_\_\_  
Secretary  
Marvin S. Krout

This plat approved and all dedications  
shown hereon accepted by the City Council of the City of Wichita,  
Kansas, this \_\_\_\_\_ day of \_\_\_\_\_ 1992.

\_\_\_\_\_  
Mayor  
Bob Knight  
\_\_\_\_\_  
Deputy City Clerk  
Pat Burnett

Know all men by these presents that we,  
the undersigned, have caused the land described in the surveyors certificate  
to be platted into Lots, Blocks, and Streets, to be known as  
"PARK GLEN ADDITION", Wichita, Sedgwick County, Kansas. The utility  
easements are hereby granted as indicated for the construction  
and maintenance of all public utilities. The streets are hereby dedi-  
cated to and for the use of the public. All abutters rights of access  
to or from Lark Lane, over and across the east line of Block A, and  
to or from Pawnee Ave., over and across the south line of Blocks A,  
and B are hereby granted to the appropriate governing body.

Realty One Corp

\_\_\_\_\_  
President  
A. J. Soerries

Entered on transfer record this \_\_\_\_\_ day  
of \_\_\_\_\_ 1992.  
\_\_\_\_\_  
County Clerk  
Don Wright

State of Kansas) SS The foregoing instrument acknowledged be-  
Sedgwick County) fore me, this \_\_\_\_\_ day of \_\_\_\_\_ 1992, by A.J. Soerries,  
President of Realty One Corp, on behalf of the corporation.

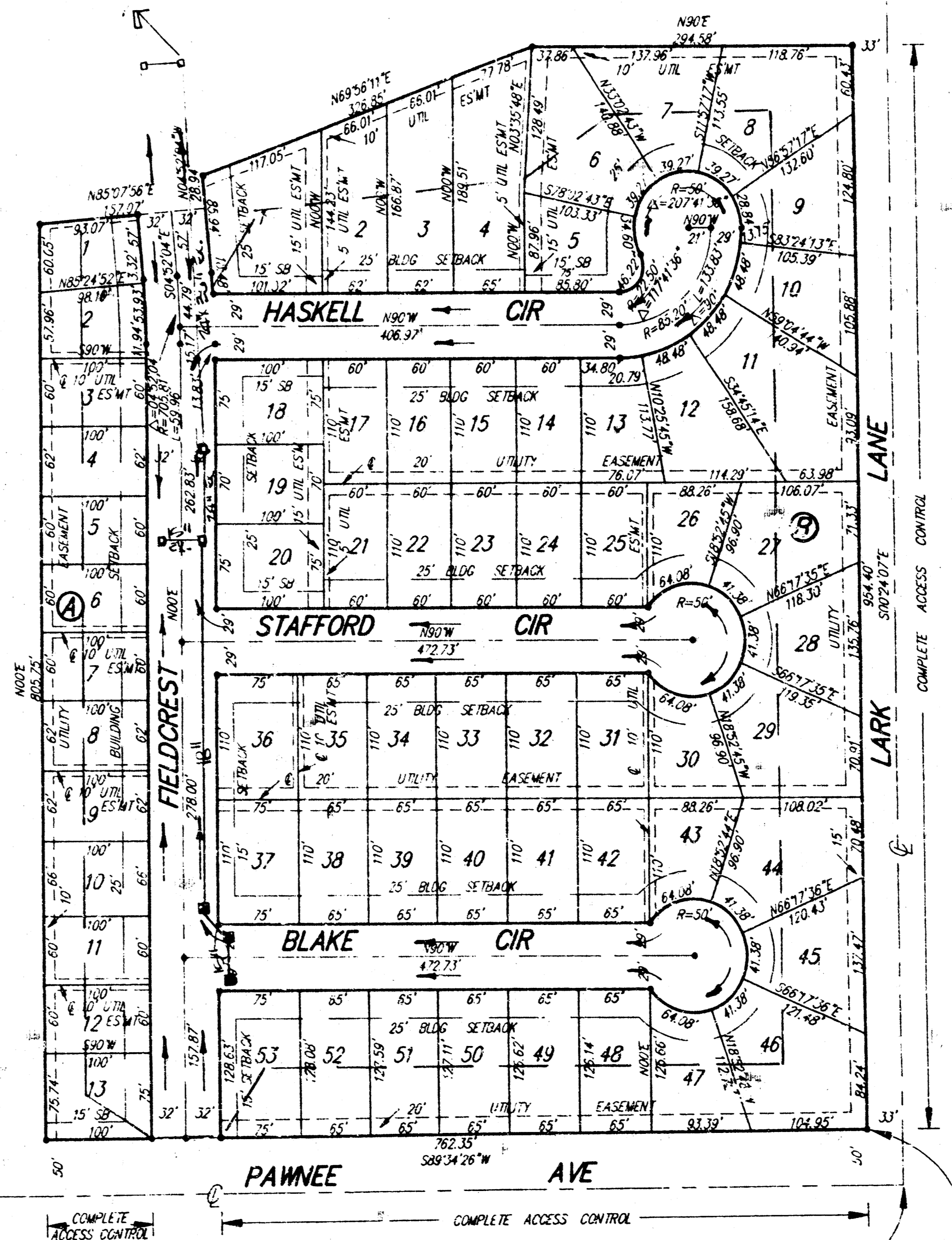
\_\_\_\_\_  
Notary Public

My App't. Exp. \_\_\_\_\_

State of Kansas) SS This is to certify that this plat has been  
Sedgwick County) filed for record in the office of the Register of Deeds, this \_\_\_\_\_ day  
of \_\_\_\_\_ 1992, at \_\_\_\_\_ o'clock \_\_\_\_\_ M., and is duly  
recorded.

\_\_\_\_\_  
Register of Deeds  
Pat Kettler  
\_\_\_\_\_  
Deputy  
Ed Resa

1" = 100'  
• = PIN

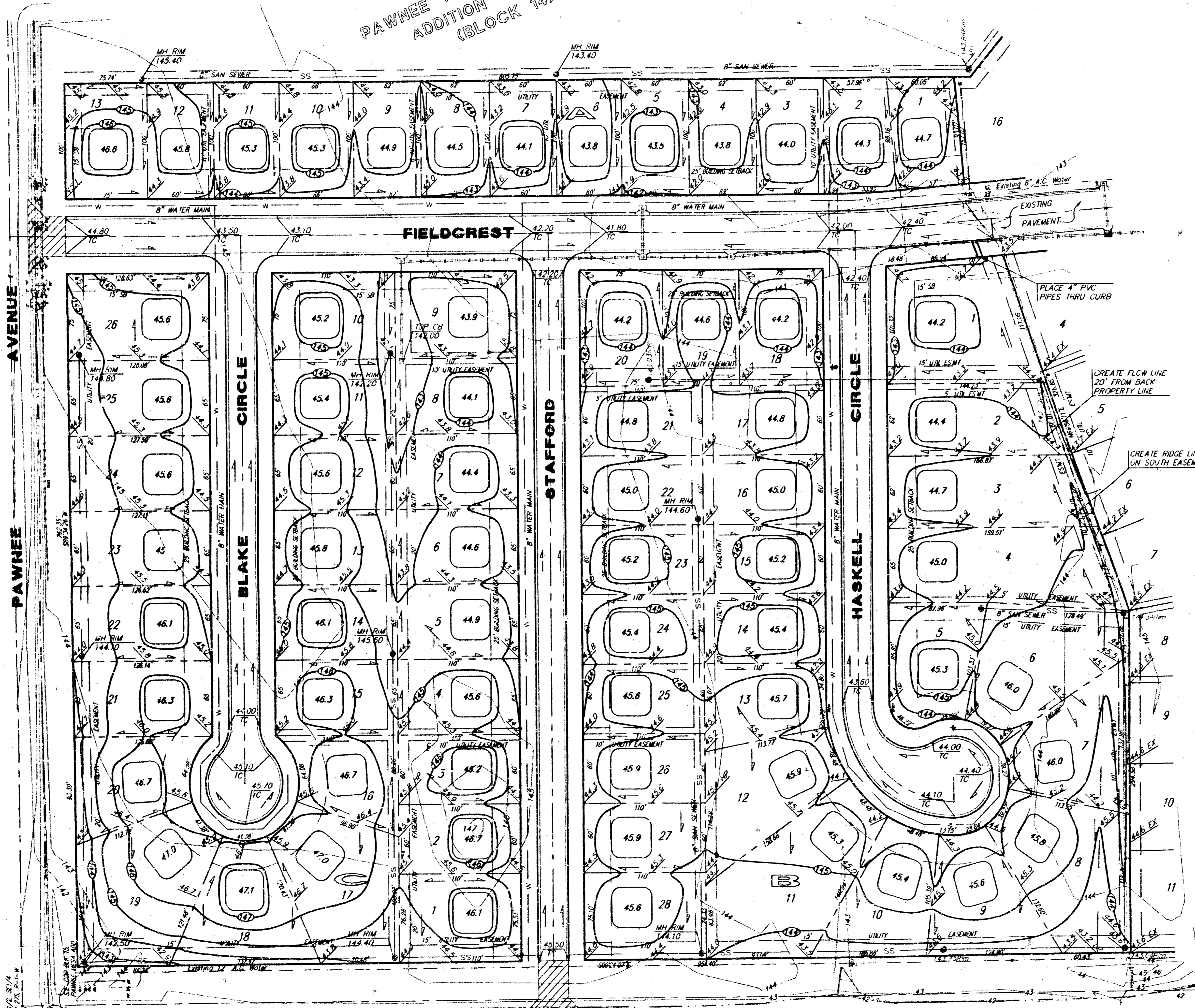


SE COR 1/2, SE 1/4  
SEC 31, T1P 27S, R-1-W  
SE COR BLK 15  
PAWNEE MESA ADD

DRAINAGE PLAN

PAWNEE MESA  
ADDITION  
(BLOCK 14)

SCALE: 1" = 50'



PAWNEE MESA  
ADDITION  
(BLOCK 17)

**BENCH MARK**  
RR spike in I.P.  
75' N.E. of intersection  
Pawnee and Lark Lane  
Elevation 1329.93 M.S.L.  
(Elevation 142.93 City Datum)

City of Wichita Bench Mark Disc  
1/2 mile east of 119th St. West & Pawnee  
34' south of centerline Pawnee and  
6' west of hedge row south  
Elevation 145.50 City Datum  
(Elevation 1332.90 M.S.L.)

**NOTE:**  
Proposed minimum garage floor  
elevations are shown on plans.  
Contractor to set finish floor elevation.  
All street elevations shown on plans  
are for top of curb (full height).  
Contour elevations shown are for  
graphic representation of drainage  
concept. Spot elevations shall take  
precedence over contour lines.

**APPROVED  
DRAINAGE PLAN**

<b>PARK GLEN ADDITION LOT GRADING PLAN</b>			
<b>BAUGHMAN COMPANY P. A.</b> ENGINEERING & SURVEYING 316/262-7271 • 315 ELLIS • WICHITA, KANSAS 67211			
PROJECT NUMBER <b>92-07-E389</b>			
DESIGN P.M./B.M.	DRAWN B.A.M.	APPROVED	DATE 11-13-92
		SCALE 1" = 50'	SHEET 1 OF 1