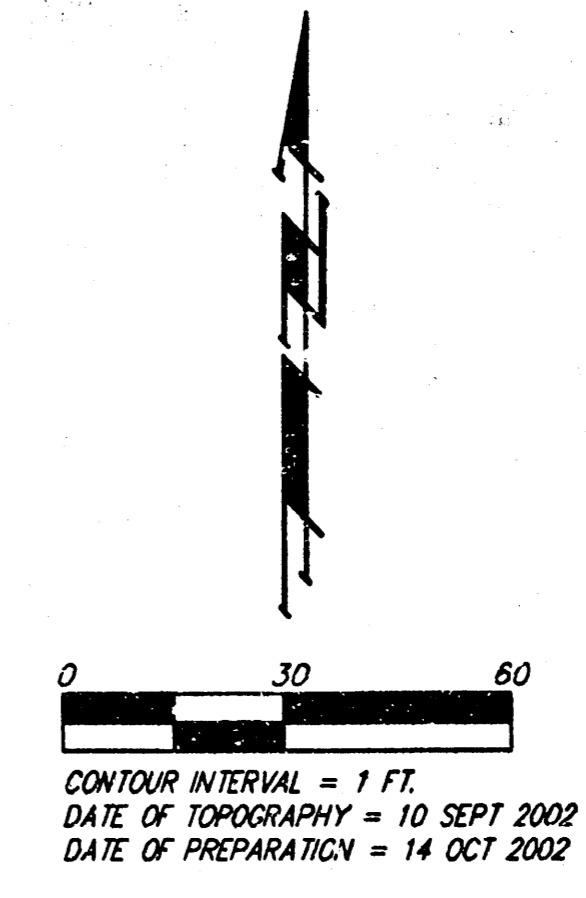
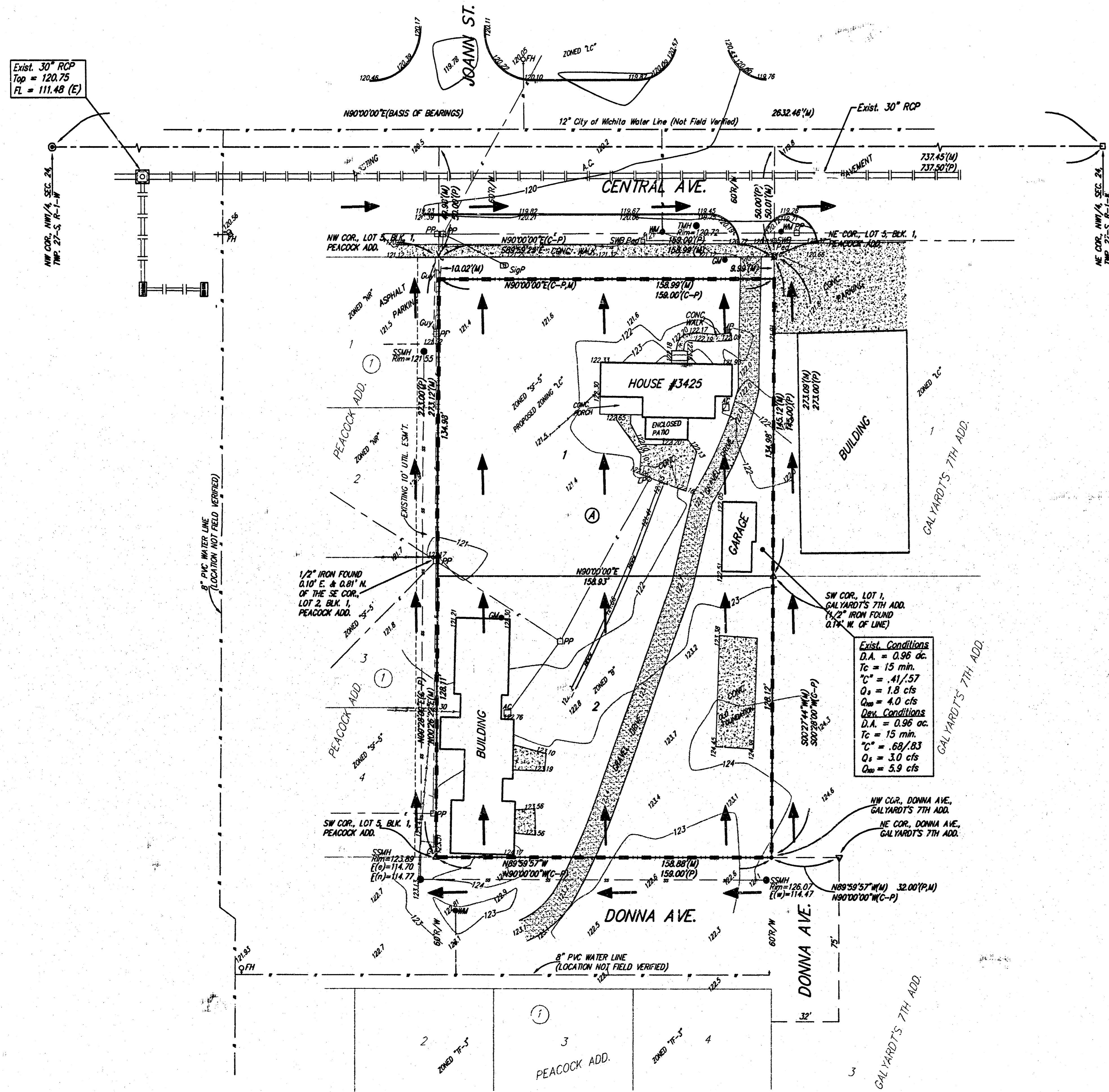


DRAINAGE PLAN

PEACOCK 2ND ADDITION

WICHITA, SEDGWICK COUNTY, KANSAS

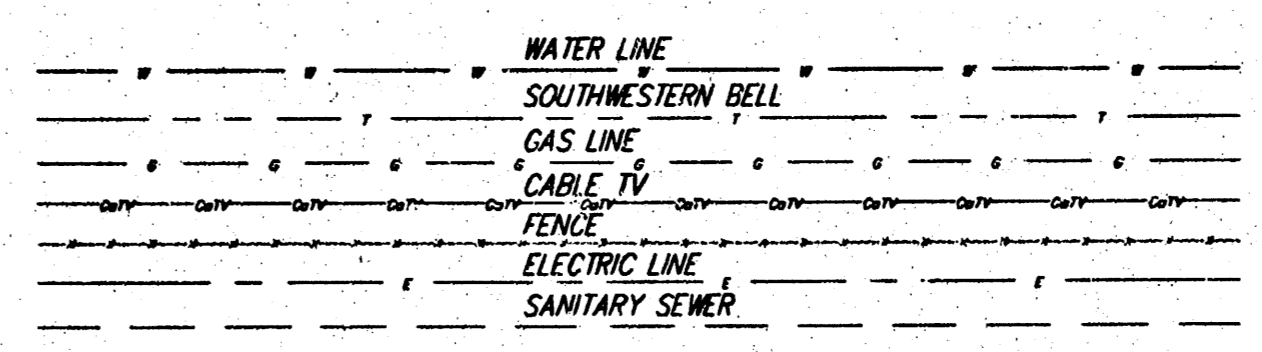


LEGAL DESCRIPTION:
 A replat of all of Lot 3, Block 1, Peacock Addition to Wichita, Kansas.

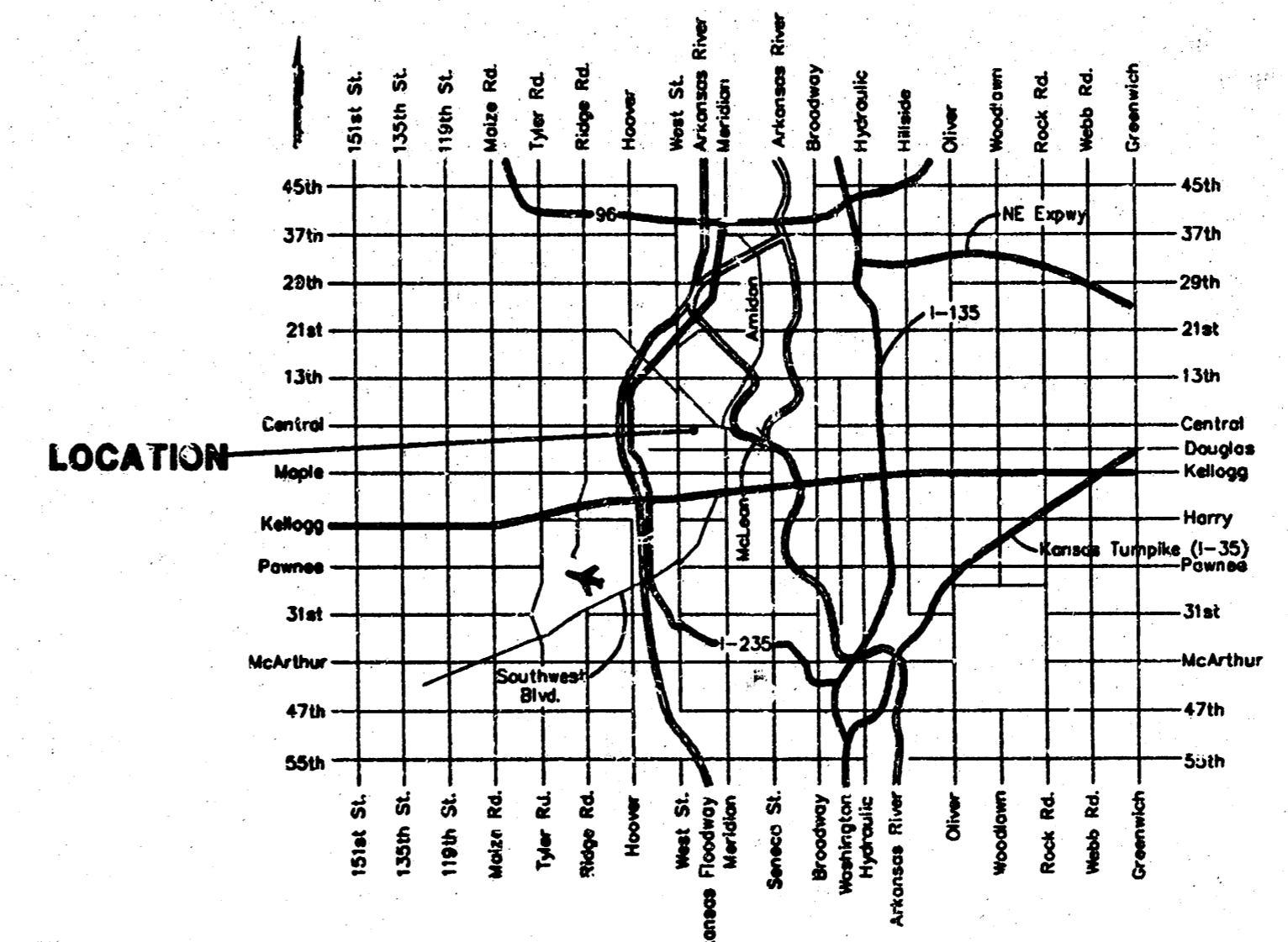
Owner:
 Klausmeyer Construction
 Attn: Don Klausmeyer
 10008 W. York
 Wichita, Kansas 67215
 Ph. (316) 554-0001

Benchmark:
 Central Ave. & Knight St.
 "1" on Top of Curb
 15.5' E. of & Knight St.
 81' S. of Central Ave.
 Elev. = 120.19 City Datum
 1307.59 NGVD29

- (M) = MEASURED
 (P) = PLATTED
 (C-P) = CALCULATED PER PLATTED INFO.
- = #4 REBAR W/ "BAUGHMAN" CAP (SET)
 - = #4 REBAR IN THIMBLE (FOUND)
 - = THIMBLE CAP, NOTHING IN THIMBLE (FOUND)
 - △ = 3/4" IRON (FOUND)
 - ▽ = 1" NOTCH (FOUND)
 - = 7/8" NAIL (FOUND)
 - ◇ = 1/2" IRON (FOUND)



- FH = Fire Hydrant
- GM = Gas Meter
- GUA = Guy Anchor
- LF = Light Fixture
- MB = Mail Box
- PP = Power Pole
- ACU = Air Conditioning Unit
- SSMH = Sanitary Sewer Manhole
- SSMBP = Southwestern Bell Pedestal
- TMH = Traffic Manhole
- WM = Water Meter
- SIGP = Traffic Signal Pole



VICINITY MAP

15 NOVEMBER 2002

BAUGHMAN COMPANY P. A.
 ENGINEERING, SURVEYING, & PLANNING
 316-262-7271 • 315 ELLIS • WICHITA, KANSAS 67211
 P:\WHD\PROJECTS\PEACOCK\PEACOCK.DWG