

MINIMUM BUILDING PAD ELEVATIONS FOR LOWEST OPENING OF STRUCTURE

Lot & Block	City Datum	M.S.L.
1 - Bk 7	186.0	1371.4
2 - Bk 7	185.0	1372.4
3 - Bk 7	184.0	1371.4
4 - Bk 7	183.0	1372.4
5 - Bk 7	182.5	1369.9
6, 7 - Bk 7	182.0	1368.4
8 - Bk 7	181.5	1368.9
9 - Bk 7	181.0	1368.4
10, 11 - Bk 7	180.5	1367.9
12, 14, 15, 16 - Bk 7	180.0	1367.4

NOTE:

Proposed minimum finish floor elevations are shown on plans. Contractor to set garage floor elevation.

All street elevations shown on plans are for top of curb (full height).

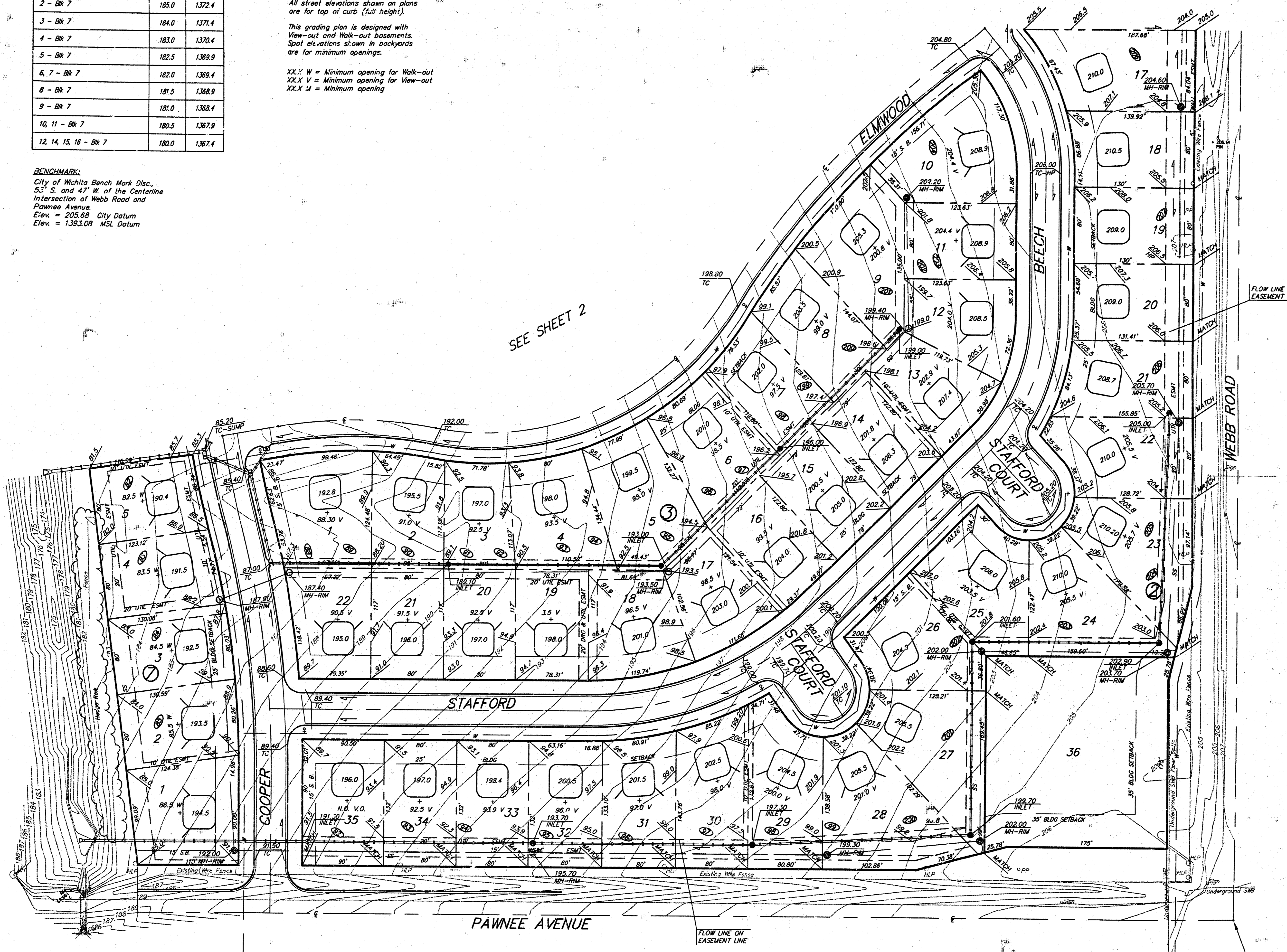
This grading plan is designed with View-out and Walk-out basements. Spot elevations shown in backyards are for minimum openings.

XX.X W = Minimum opening for Walk-out

XX.X V = Minimum opening for View-out

XX.X J = Minimum opening

BENCHMARK:
City of Wichita Bench Mark Disc.,
53' S. and 47' W. of the Centerline
Intersection of Webb Road and
Pawnee Avenue.
Elev. = 205.69 City Datum
Elev. = 1393.09 M.S.L. Datum



SEE SHEET 2

1" = 60'-0"
• = 1/2" Rebar

**APPROVED
DRAINAGE PLAN**

Revised 11/17/98
Revised 6/24/98
Revised 3/28/97

**PEBBLEBROOK ADDITION
LOT GRADING PLAN**

BAUGHMAN COMPANY P.A.
ENGINEERING, SURVEYING, & PLANNING
310-262-7271 • 315 ELLIS • WICHITA, KANSAS 67211

PROJECT NUMBER: _____ SHEET: **1** of **3**

DESIGN: G.A.M. DRAWN: _____ APPROVED: _____ DATE: 4-5-93 SCALE: 1"=60'