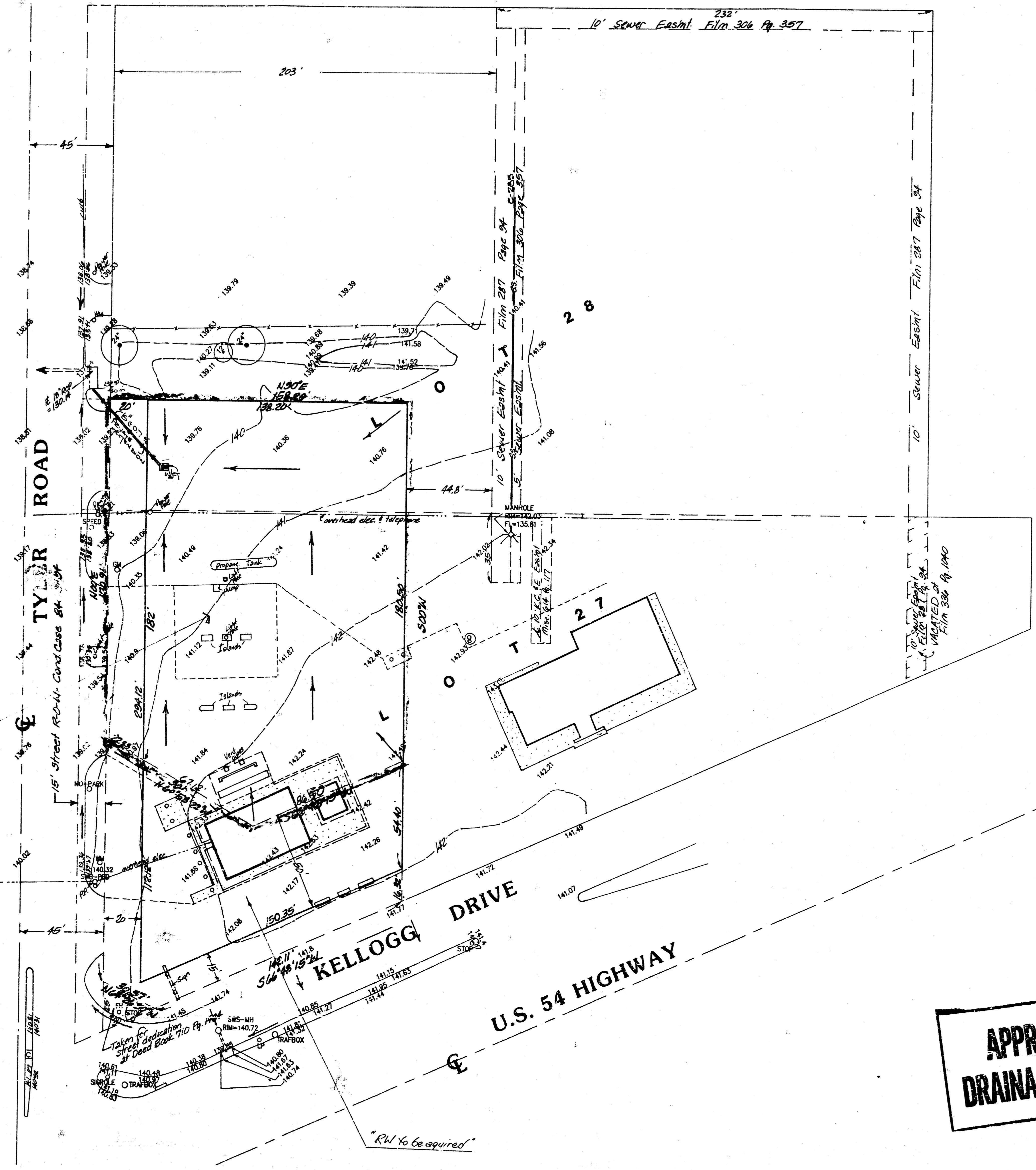


McCORMICK



1" = 30'

Bench mark:  
 Chiseled square on top of curb  
 east side inlet, north side of  
 Kellogg frontage road on south  
 side of U.S. 54, approx. 330' west  
 of Tyler  
 Elev. = 135.35 City Datum

**APPROVED  
 DRAINAGE PLAN**

Phillips 66 Center - Tyler  
 Addition  
**DRAINAGE PLAN**