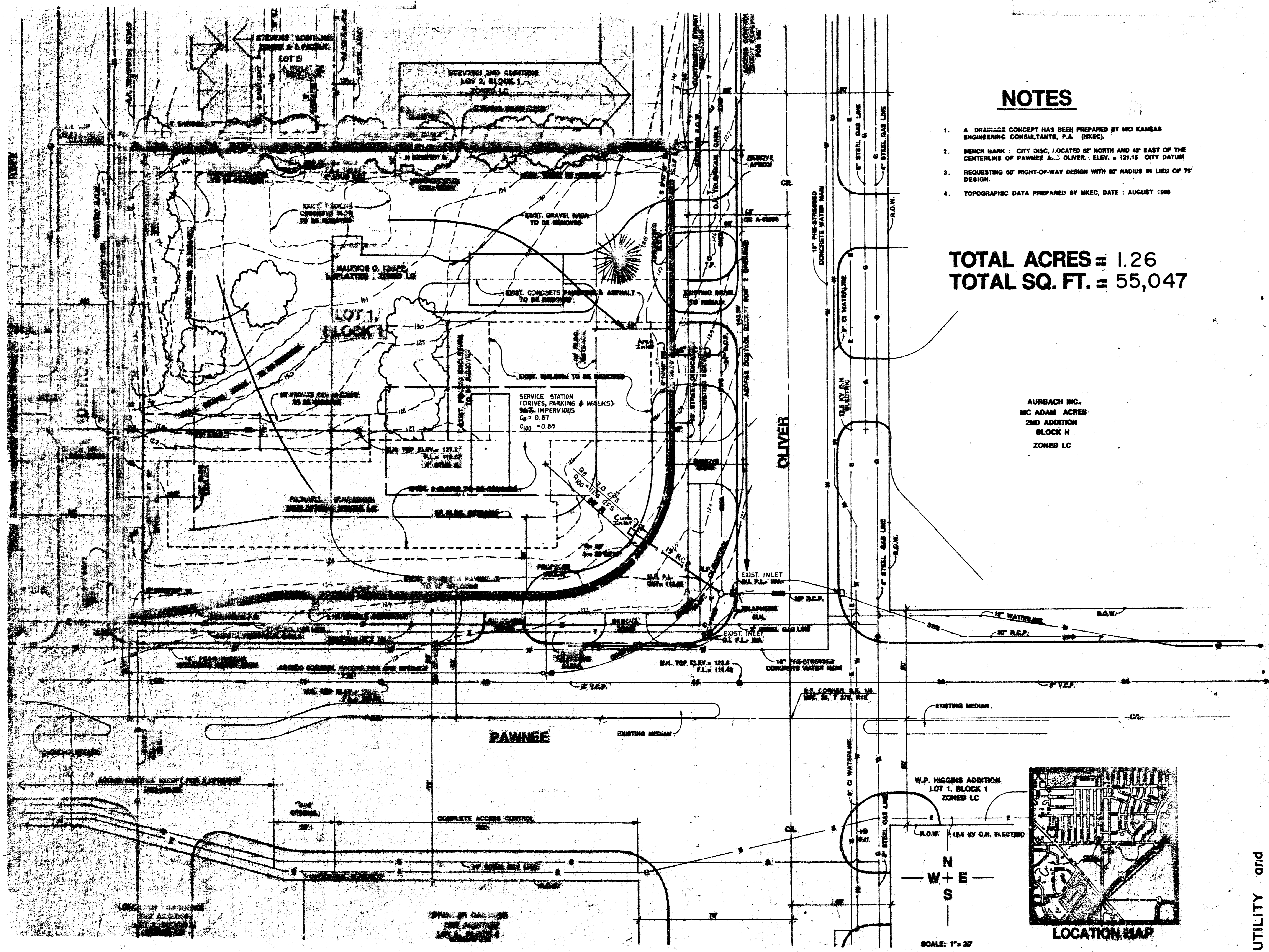


Phillips SE

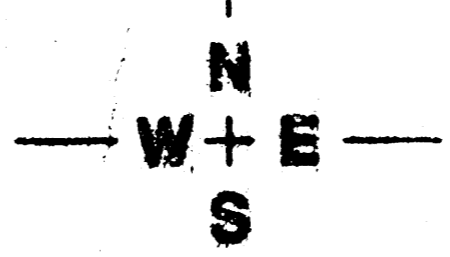


### NOTES

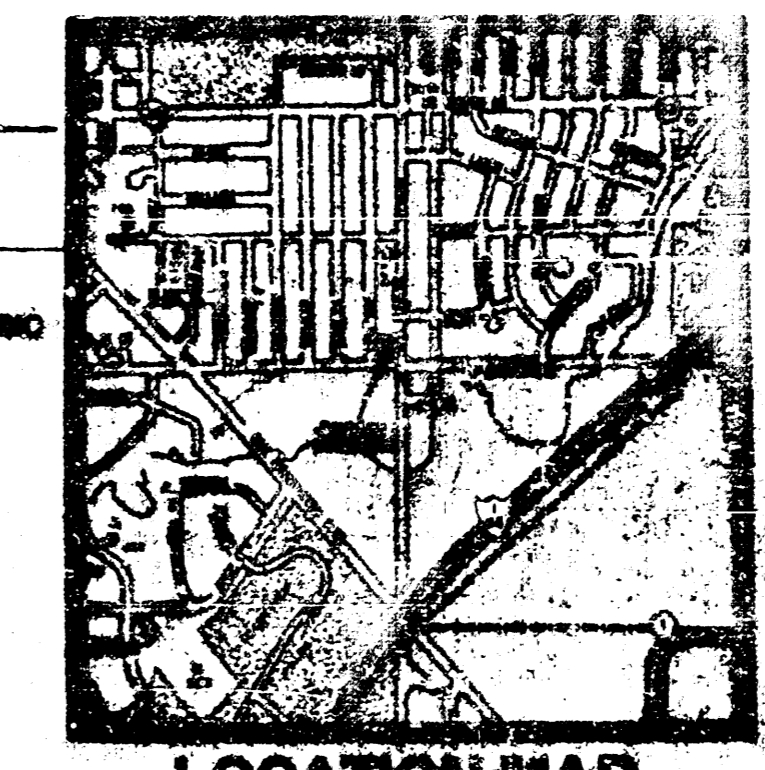
1. A DRAINAGE CONCEPT HAS BEEN PREPARED BY MID KANSAS ENGINEERING CONSULTANTS, P.A. (MKEC).
2. BENCH MARK - CITY DISC, LOCATED 20' NORTH AND 42' EAST OF THE CENTERLINE OF PAWNEE A. & OLIVER. ELEV. = 121.15 CITY DATUM
3. REQUESTING 50' RIGHT-OF-WAY DESIGN WITH 60' RADIUS IN LIEU OF 75' DESIGN.
4. TOPOGRAPHIC DATA PREPARED BY MKEC, DATE : AUGUST 1988

**TOTAL ACRES = 1.26**  
**TOTAL SQ. FT. = 55,047**

AUBBACH INC.  
 MC ADAM ACRES  
 2ND ADDITION  
 BLOCK H  
 ZONED LC



SCALE: 1" = 20'



LOCATION MAP

UTILITY and DRAINAGE PLAN  
**PHILLIPS SOUTHEAST ADDITION**

**BILL G. YOUNG DESIGN**  
 2014 S. 17TH STREET, NORTH WICHITA, KS 67203  
 PROJECT NO. 88-010  
 DATE: AUGUST 1988  
 REV.