

BAUGHMAN COMPANY, P.A.
SURVEYING & ENGINEERING
315/262-7271 • 330 LAURA • WICHITA, KANSAS 67211

CONFIRMATION
MEMO

PROJECT: Pilgrim Congregational Church
DATE: 9-19-83
TO: CHAS BREYENSTEIN
FROM: B HOOPER
REFERENCE: DRAINAGE PLAN

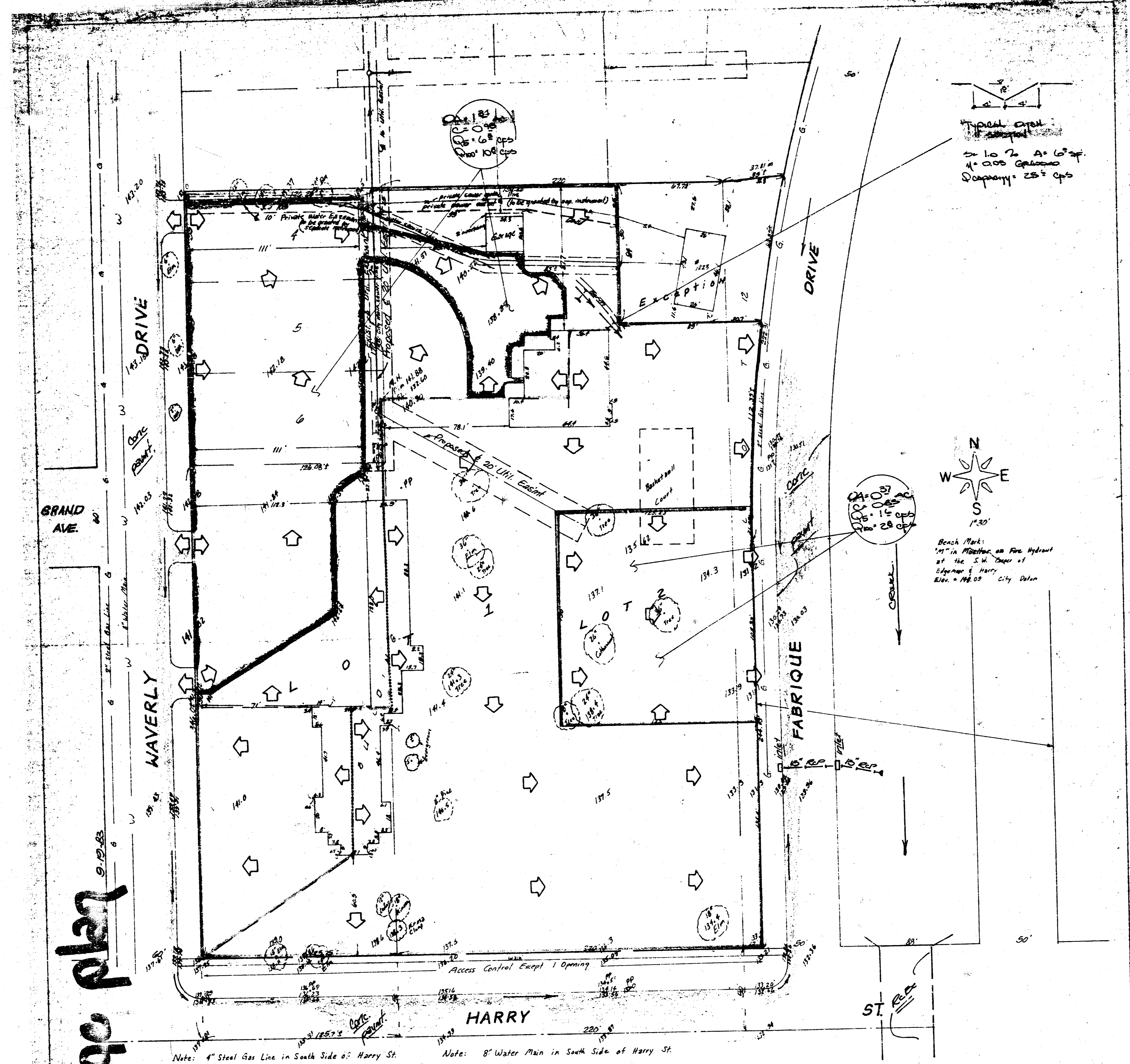
Plan is scheduled for subdivision for
2/27/83.

Lot 1 will remain as it presently exists
for development purposes. The NW corner
of Lot 1 which is parking lot and bldg. drains
north and east to FABRIQUE. A conveyance
pitch discharges the parking lot area and
the typical section and capacity are indicated
 $R_{100} = 1.5^{\circ}$ cfs $C = 0.85$

The remainder of Lot 1 (2.0 ac) drains
basically south and east to FABRIQUE.
 $R_{100} = 6^{\circ}$ cfs $C = 0.85$

Lot 2 (office development) will drain east
to FABRIQUE thru drives or flumes.
 $R_{100} = 2^{\circ}$ cfs $C = 0.85$

11/3" and 12" storm sewer pipe discharge
FABRIQUE INTO THE CREEK.



drainage plan

SKETCH PLAT
PILGRIM CONGREGATIONAL CHURCH ADDITION

Part of Lot 12, Block 7, Lincoln Hill Addition to Wichita, Kansas and a tract
in the S.E. 1/4 of Sec 25, TWP. 27-5, R-1-E of the 6th RM, Sedgewick County Kansas.

PILGRIM CONGREGATIONAL CHURCH

BAUGHMAN COMPANY, P.A.
SURVEYING & ENGINEERING
315/262-7271 • 330 LAURA • WICHITA, KANSAS 67211