

Mr. Vicki Huang
 City Engineering
 7th Floor - City Hall
 455 N. Main
 Wichita, Kansas 67202

RE: Final Drainage Plan
 Pinewood Mobile Home Park

Dear Vicki:
 Enclosed herewith are two (2) copies of the Final Drainage Plan for
 the above captioned project submitted for your review.

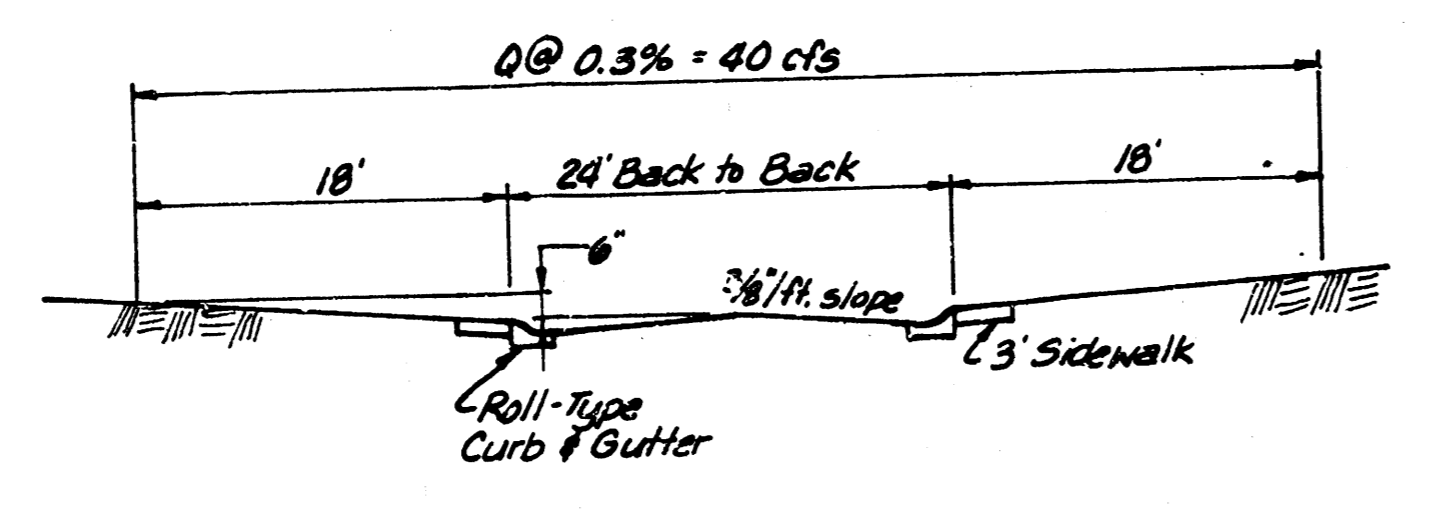
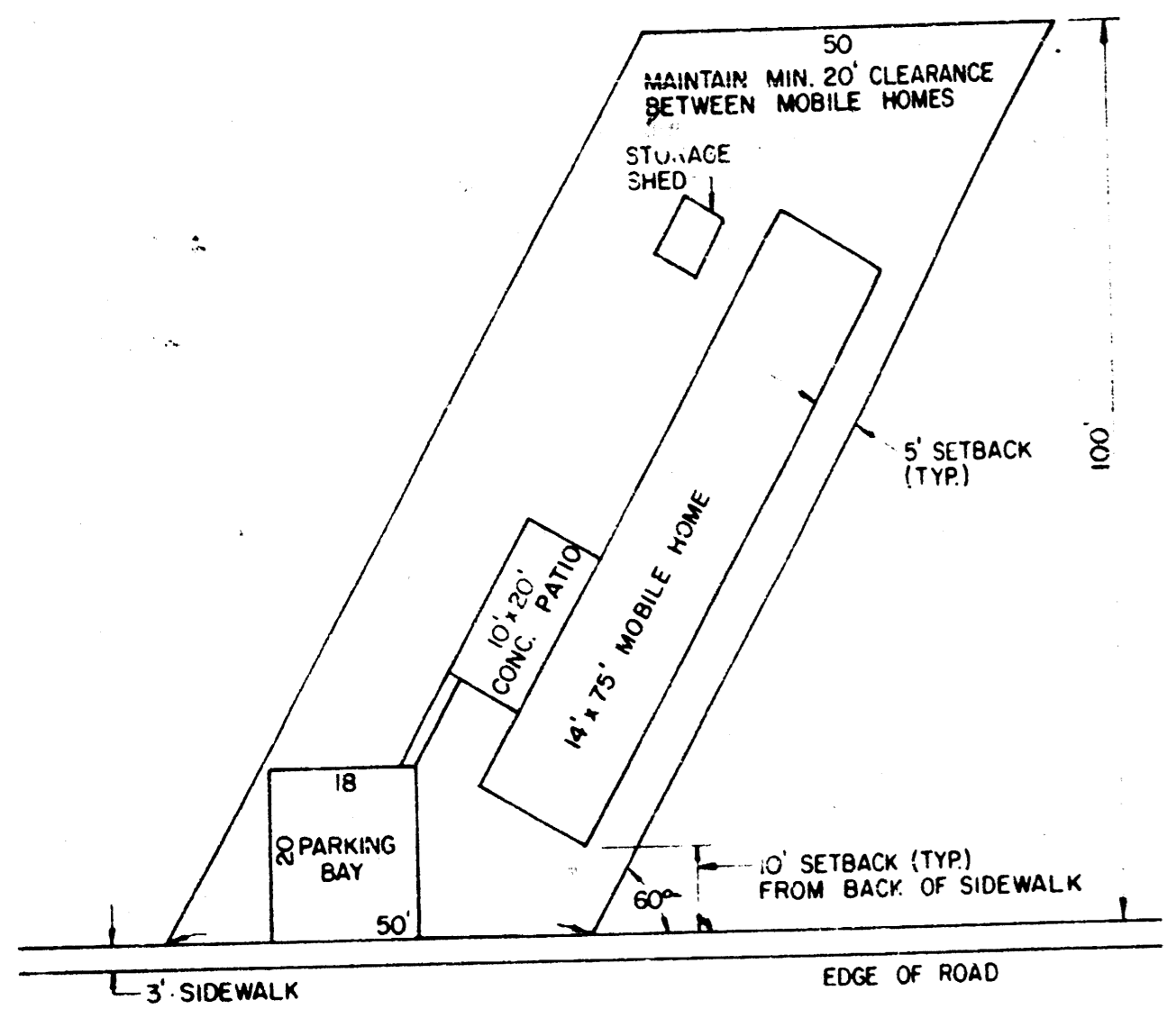
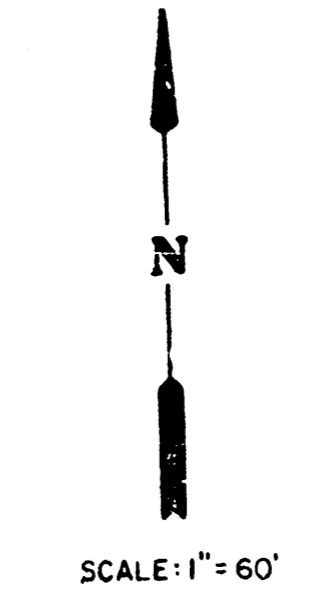
Respectfully submitted,

REISS & GOODNESS ENGINEERS
Robert G. Previters
 Robert G. Previters, L.A.
 RUP/rmk
 enc.

DRAINAGE PLAN PINWOOD MOBILE HOME PARK WICHITA, SEDGWICK COUNTY, KANSAS

REISS & GOODNESS ENGINEERS
 2100 WEST 21ST STREET
 WICHITA, KANSAS 67204
 (316) 832-0283

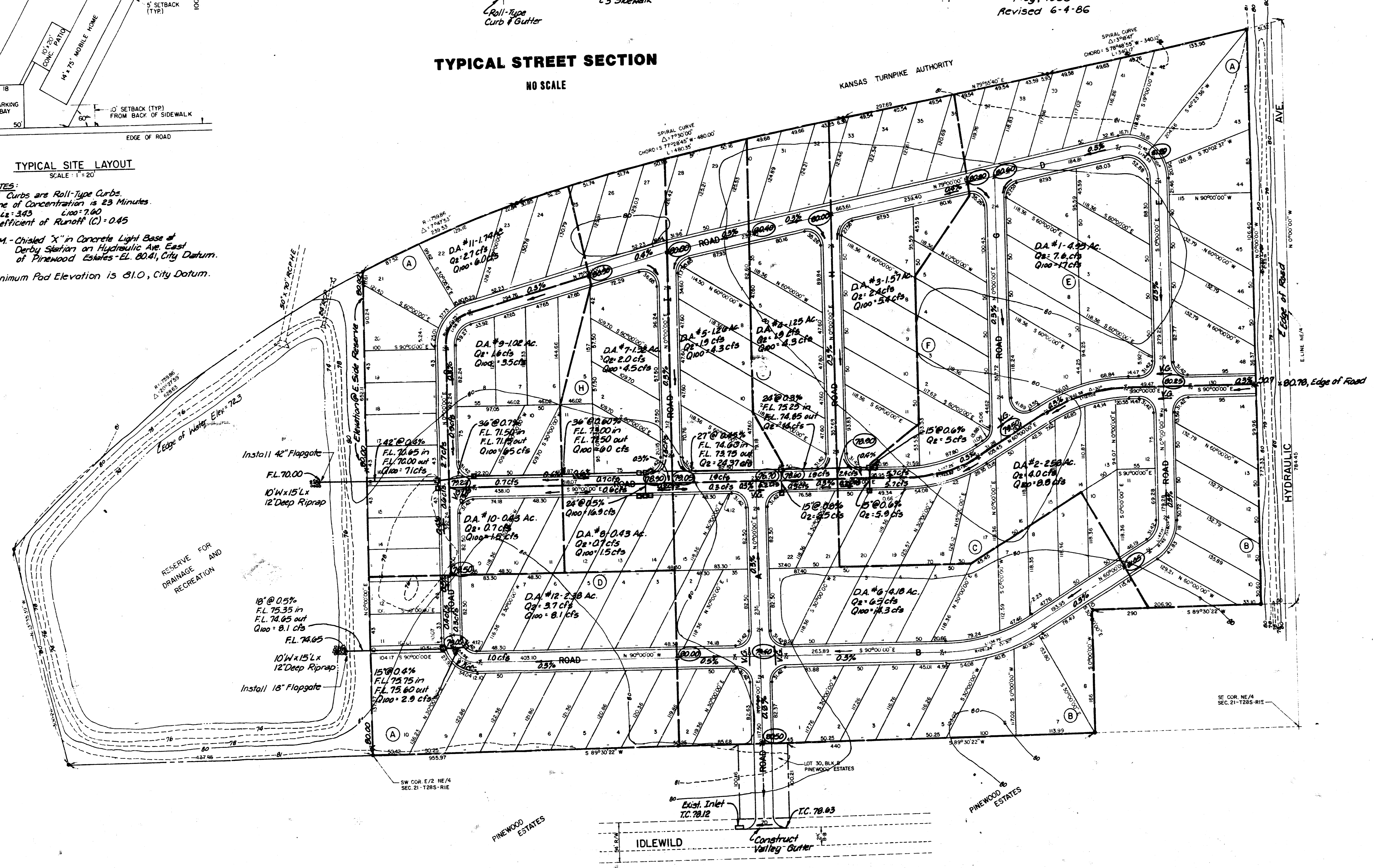
May, 1986
 Revised 6-4-86



TYPICAL STREET SECTION
 NO SCALE

TYPICAL SITE LAYOUT
 SCALE: 1" = 20'

NOTES:
 All Curbs are Roll-Type Curbs
 Time of Concentration is 23 Minutes
 $C_c = 343$ $L_{100} = 7.60$
 Coefficient of Runoff (C) = 0.45
 B.M. - Chisled 'X' in Concrete Light Base of
 Derby Station on Hydraulic Ave East
 of Pinewood Estates - E.L. 80.41, City Datum.
 Minimum Pad Elevation is 81.0, City Datum.



RESERVE FOR
 DRAINAGE AND
 RECREATION

PINWOOD ESTATES

IDLEWILD

PINWOOD ESTATES