

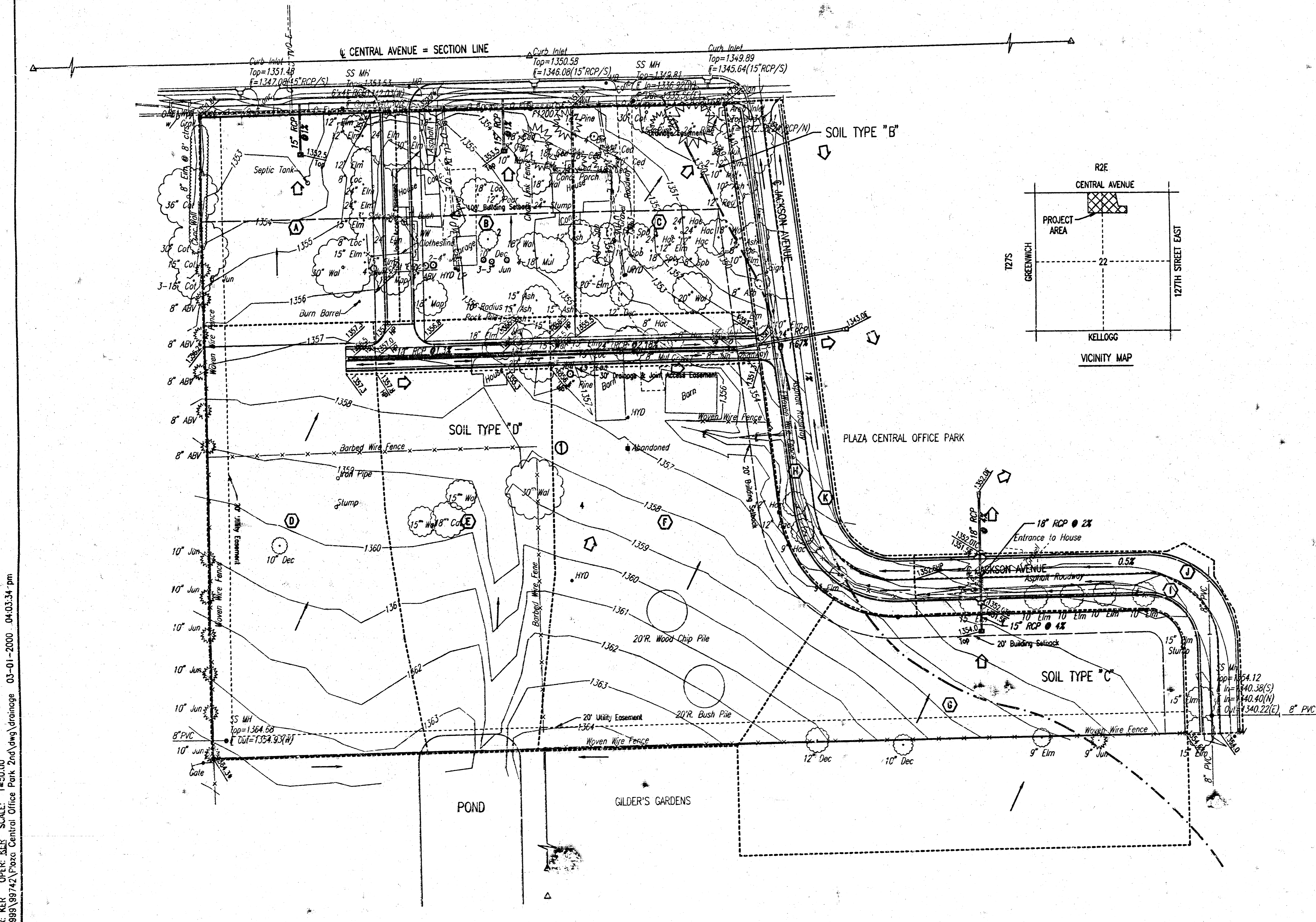
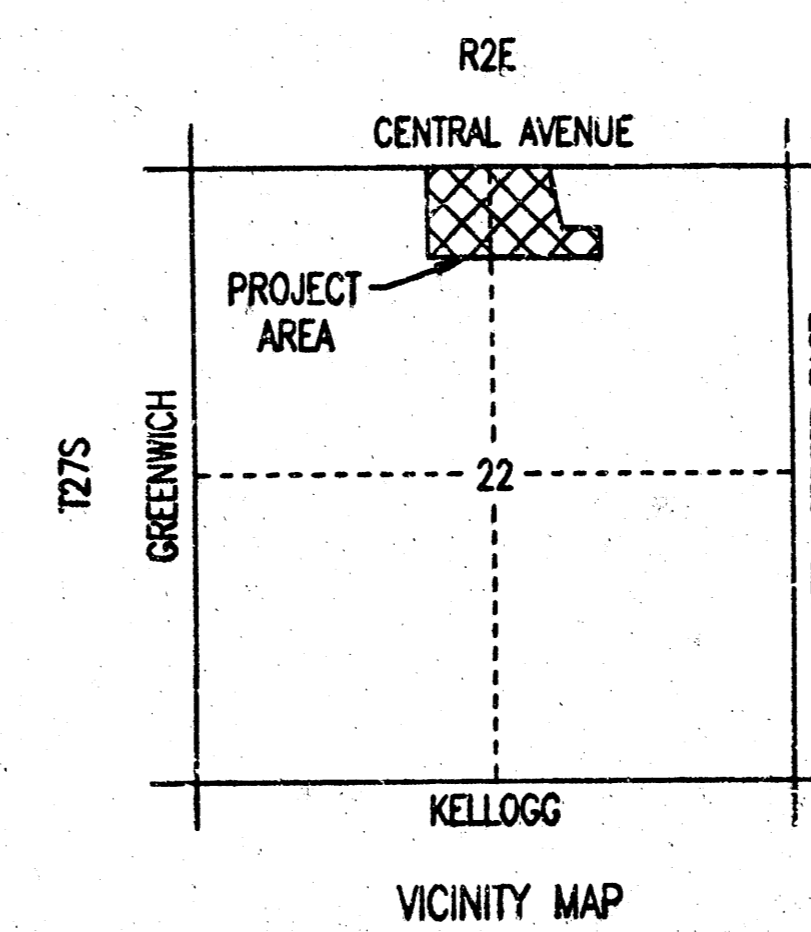
# DRAINAGE PLAN

## PLAZA CENTRAL OFFICE PARK 2ND ADDITION

### TO WICHITA, SEDGWICK COUNTY, KANSAS

SCALE: 1"=50'

- BM 6010: Railroad Spike in S.W. Face of Power Pole at Curve in Jackson Street, 500 feet South of Central Avenue. Elev.=1354.08 M.S.L.
- BM 207: Railroad Spike in East Face of 18" Cottonwood, East side of Jackson Street 125 feet south of Central Avenue. Elev.=1347.21 M.S.L.
- BM 300: City Benchmark Disc at the W. End of the Conc. Headwall of RCBC at the SE Cor. Central Ave. and Jackson Street. Elev.=1349.06 M.S.L.
- BM 301: Chiselled "f" on the North End of the Conc. Wall of the Area Inlet, south side of Central Avenue and 550' West of Jackson Street. Elev.=1351.40 M.S.L.



- LEGEND**
- SOIL GROUP BOUNDARY
  - (A) BASIN IDENTIFIER
  - BASIN BOUNDARY
  - ⇨ MAJOR STORM WATER OVERFLOW (Q100)
  - ⇨ MINOR STORM WATER FLOW (Q5)
  - STORM SEWER AND INLET
  - SPOT ELEVATION
  - HIGH POINT ELEVATION
  - MATCH EXISTING ELEVATION
  - FLOWLINE ELEVATION
  - TOP OF CURB ELEVATION
  - TOP OF INLET ELEVATION

ES&R: KER OPER: KER SCALE: 1"=50.00  
 C:\1989\99742\Plaza Central Office Park 2nd Add\drainage 03-01-2000 04:03:34 pm