

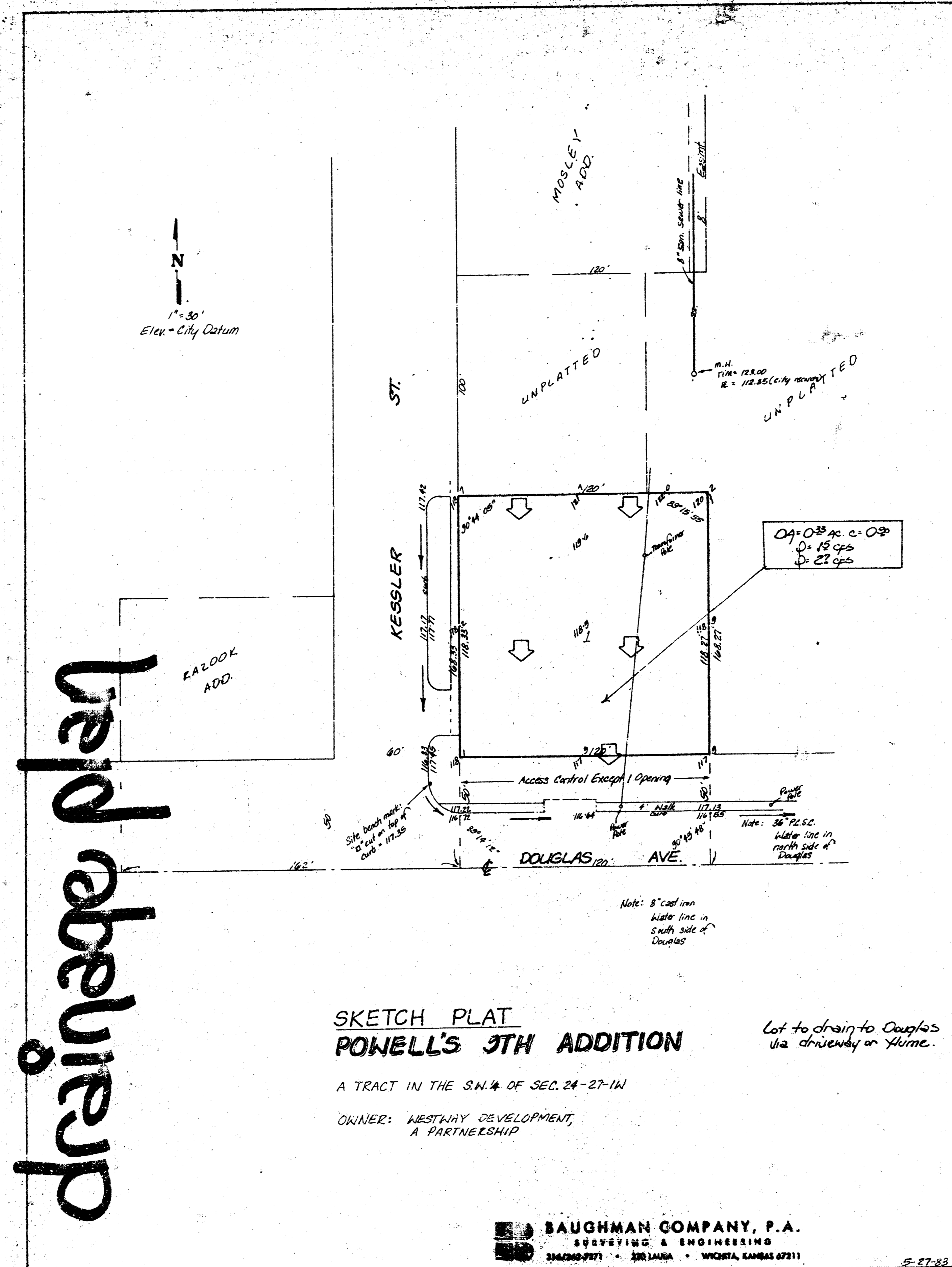
POWELL'S 9TH ADDITION
(DRAINAGE)

BAUGHMAN COMPANY, P.A.
SURVEYING & ENGINEERING
316/262-7271 • 330 LAURA • WICHITA, KANSAS 67211

**CONFIRMATION
MEMO**

PROJECT	Powell's 9th Addition	DATE	May 27, 1983
JOB NO.		COPIES TO	
TO	Chris Breitenstein		
FROM	Brent Wooten		
REFERENCE	Drainage Plan		

Final Plat is scheduled for Subdivision for June 9, 1983.
Lot 1 (0.33 AC.) will be a fully paved area. C = 0.90. Lot will drain to Douglas via driveway or flume. Douglas drains east.



drainage plan

**SKETCH PLAT
POWELL'S 9TH ADDITION**

A TRACT IN THE S.W. 1/4 OF SEC. 24-27-14
OWNER: WESTWAY DEVELOPMENT,
A PARTNERSHIP

Lot to drain to Douglas
via driveway or flume.

BAUGHMAN COMPANY, P.A.
SURVEYING & ENGINEERING
316/262-7271 • 330 LAURA • WICHITA, KANSAS 67211

5-27-83