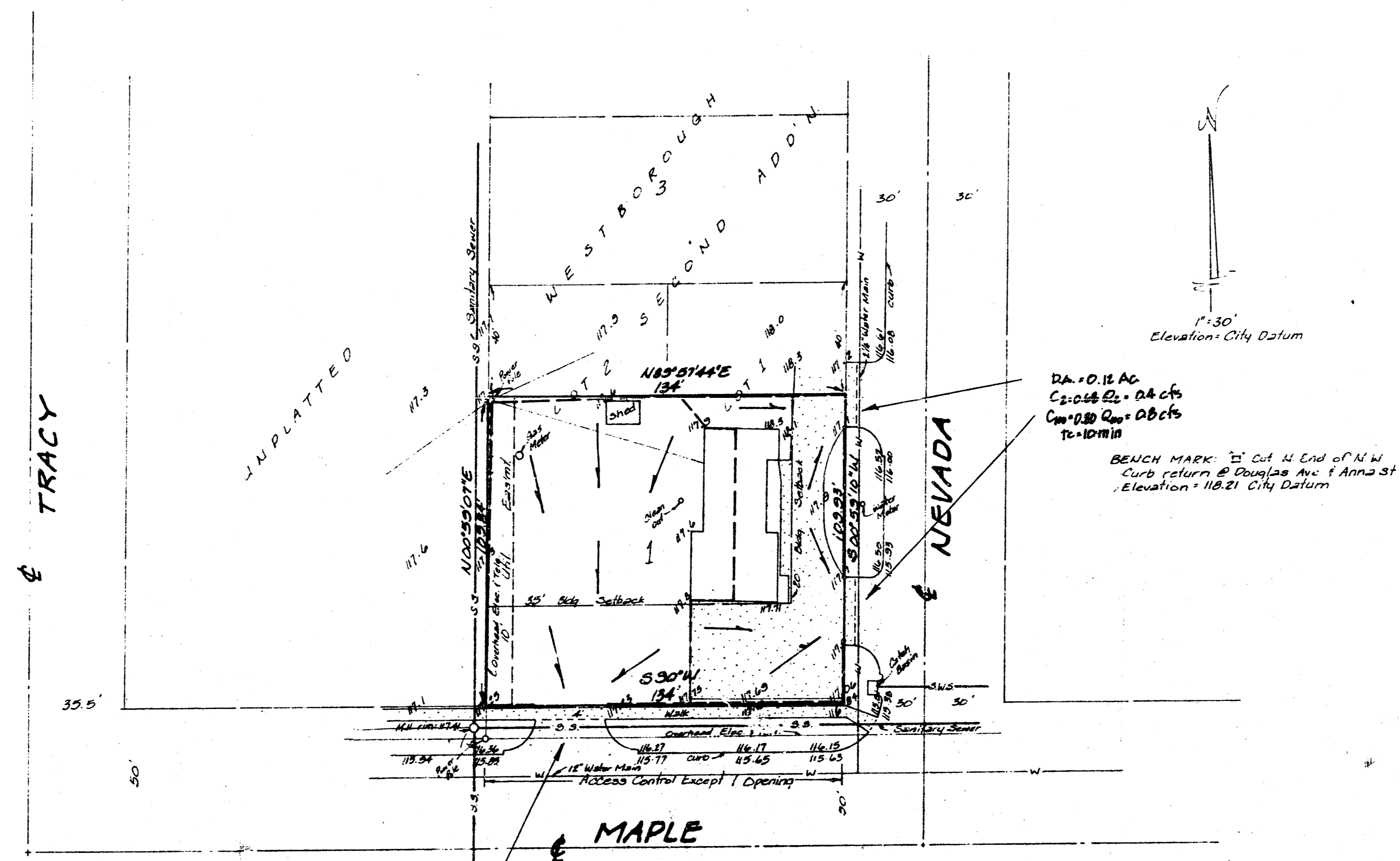


POWELL 11TH ADDITION
(sewage)



SKETCH PLAT DRAINAGE PLAN

POWELL 11TH ADDITION

LOTS 1 AND 2, EXCEPT THE NORTH 40 FEET THEREOF, BLOCK 4,
WESTBOROUGH SECOND ADDITION, SEDGWICK COUNTY, KANSAS.

OWNER: JAMES E LINSON
ELSIE E LINSON

CONTRACT PURCHASERS: ALTON D POWELL
BETTY JO POWELL

Approved.
VRH 1/4/87

BAUGHMAN COMPANY, P.A.
SURVEYING & ENGINEERING
319282-7271 • 315 ELLIS • WICHITA, KANSAS 67211

Jan 7, 1987