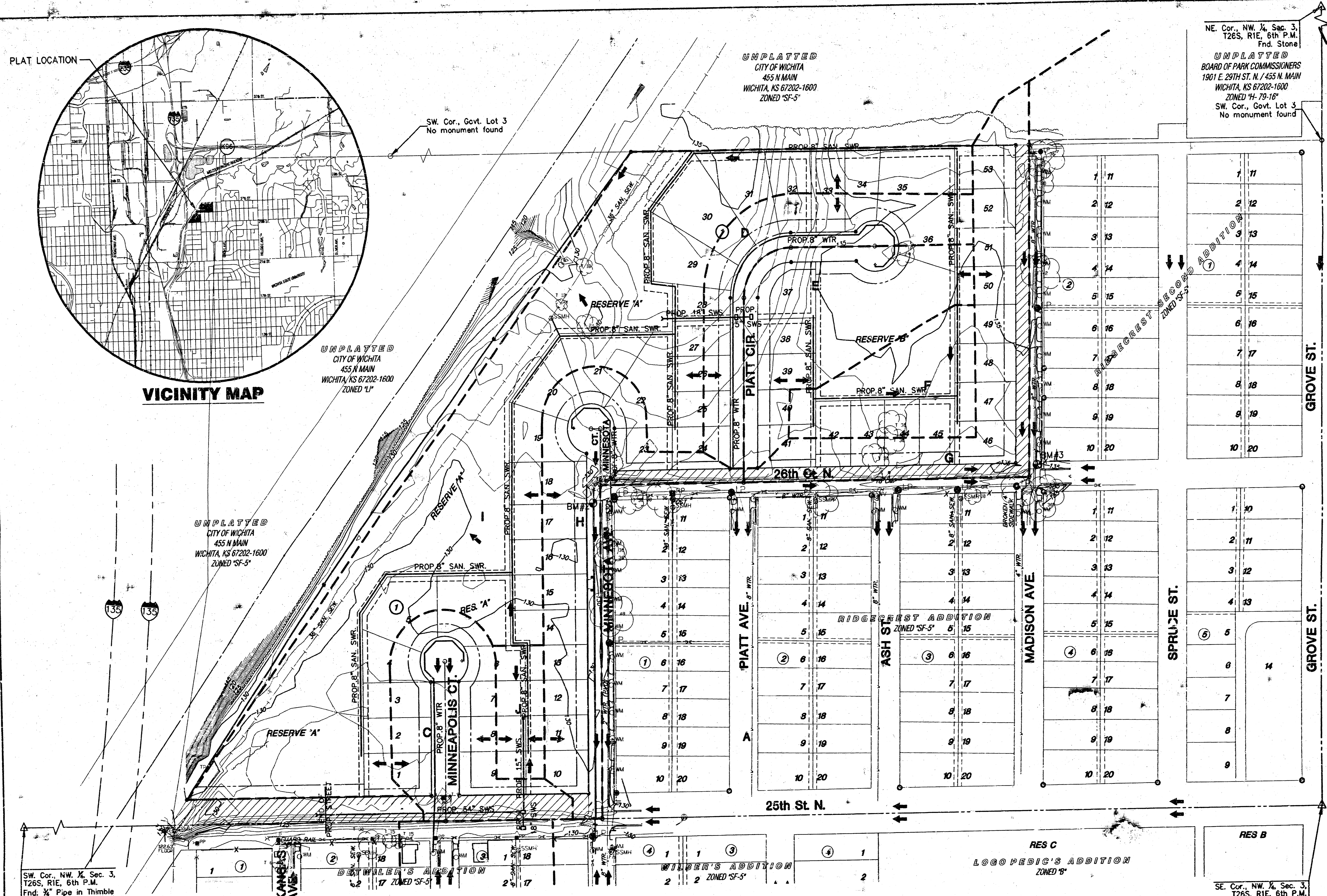


VICINITY MAP



NE. Cor., NW. 1/4, Sec. 3,
T26S, R1E, 6th P.M.
Fnd. Stone

UNPLATTED
BOARD OF PARK COMMISSIONERS
1901 E. 29TH ST. N. / 435 N. MAIN
WICHITA, KS 67202-1600
ZONED "H-79-16"
SW. Cor., Govt. Lot 3
No monument found

BENCHMARK

- BM#1 City disc at SE cor. of 25th and Grove.
ELEV. = 141.65 City Datum
1329.05 NGVD
- BM#2 "C" Top of curb W. side of Minnesota, S. of & 26th St. 30'±.
ELEV. = 130.60 City Datum
1318.00 NGVD
- BM#3 "C" Top of curb at NE. cor. of Madison and 26th St.
ELEV. = 134.505 City Datum
1321.905 NGVD

NOTES

1. Zoning: Single Family SF-5
2. Reserves: "A" is dedicated to the public and shall be owned and maintained by the public. "B" is platted for open space and is owned and maintained by the home owner association
3. Lot minimum pads as indicated on drainage plan
4. According to FIRM Community-Panel Number 200328 0010 B this plat lies within flood zone "B".

LEGEND

- CONIFEROUS TREE & DIAMETER
- DECIDUOUS TREE & DIAMETER
- SIGN
- BUSH
- POWER POLE AND GUY ANCHOR
- ELECTRIC BOX
- EDGE OF TREES
- FENCE
- BENCHMARK
- STORM WATER MANHOLE
- SANITARY SEWER MANHOLE
- TELEPHONE MANHOLE
- SECTION CORNER
- 5/8" REBAR/MKEC C/S 350 SET
- PROPERTY CORNER FOUND
- POLE
- GATE
- GAS METER
- WALL
- LIGHT POLE
- FIRE HYDRANT
- WATER VALVE
- WATER METER
- TELEPHONE RISER
- INLET
- STORM SEWER PIPE
- WATER LINE
- SANITARY SEWER LINE
- GAS LINE
- TELEPHONE LINE
- UNDERGROUND ELECTRIC LINE
- OVERHEAD ELECTRIC
- OVERHEAD TELEPHONE

DRAINAGE AND UTILITY PLAN

POWER C.D.C. SECOND ADDITION

DATE: AUGUST 2002

OWNERS: City of Wichita, Wichita City Hall 455 N. Main St., Wichita, KS 67202 316-268-4351
 DEVELOPER: Power Community Development Corporation, Inc. 1802 N. Hydraulic St., Wichita, KS 67204 316-267-3036

