

DRAINAGE PLAN
PRAIRIE POINTE
AN ADDITION TO WICHITA, SEDGWICK COUNTY, KANSAS

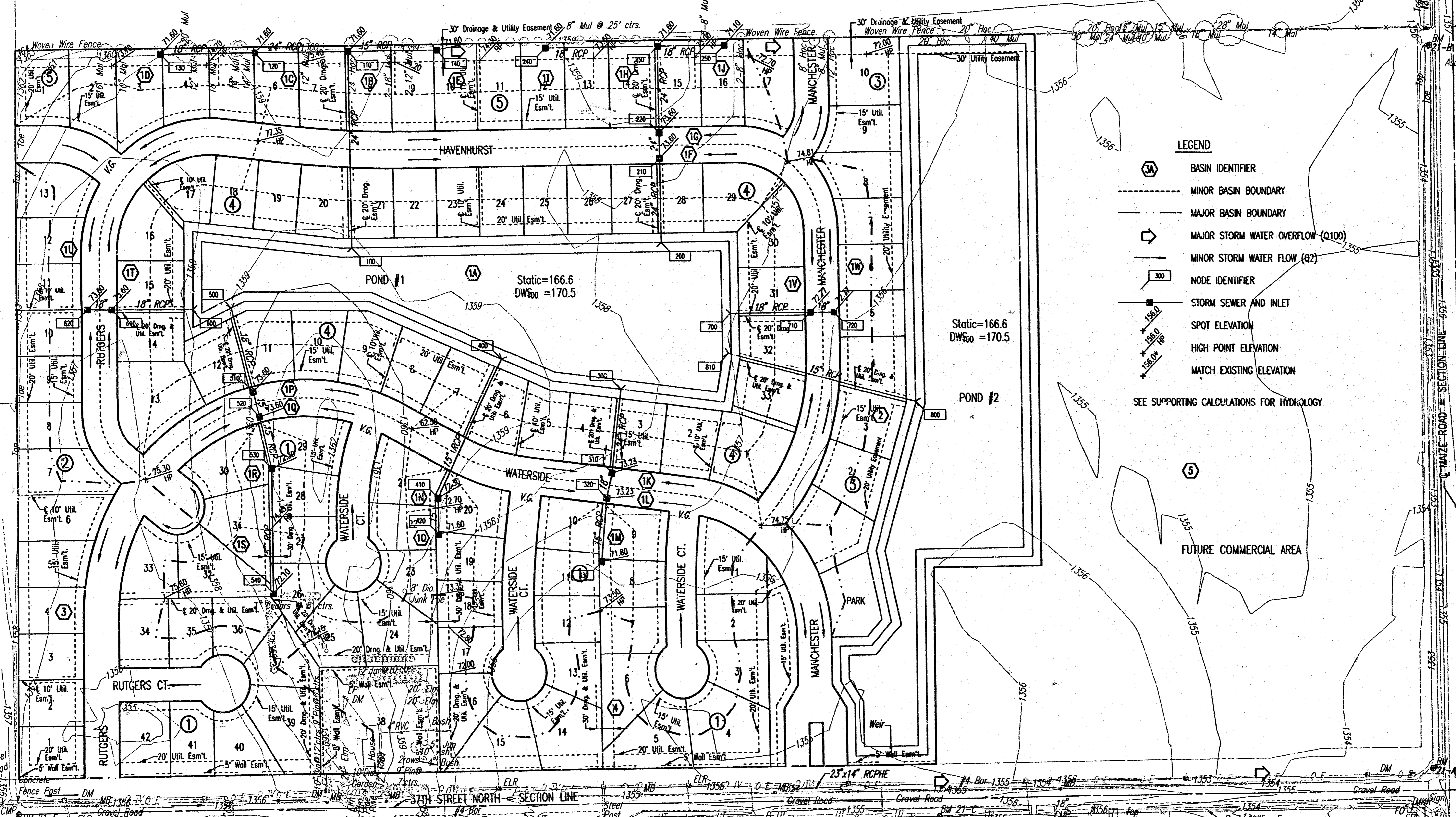
Center of
Sec. 30, T26S, R1W
Found Stone 30" Deep
Reset 3/4" Pipe
w/PEC Cap

- BENCHMARKS:**
- BM 21-A CHISELED SQUARE ON NORTH END 30"x19" RCP ON WEST SIDE OF TRIPLE PIPE AT THE NORTHWEST CORNER OF 37TH ST. NORTH AND MAIZE ROAD.
ELEV. = 1354.18 N.G.V.D.
(166.78 CITY DATUM)
 - BM 21-C STEP NAILS ON NORTH FACE OF CORNER POST ON SOUTH SIDE OF 37TH ST. NORTH 950'± WEST OF 37TH ST. NORTH AND MAIZE ROAD.
ELEV. = 1356.24 N.G.V.D.
(168.84 CITY DATUM)
 - BM 21-D CHISELED SQUARE ON CONCRETE BASE OF BRICK FENCE POST ON SOUTH SIDE OF 37TH ST. NORTH 1070'± EAST OF 1/2 MILE LINE.
ELEV. = 1355.56 N.G.V.D.
(168.16 CITY DATUM)
 - BM 21-E CHISELED SQUARE ON CONCRETE BASE OF BRICK FENCE POST ON SOUTH SIDE OF 37TH ST. NORTH 440'± EAST OF 1/2 MILE LINE.
ELEV. = 1357.01 N.G.V.D.
(169.61 CITY DATUM)
 - BM 21-F 1" PIPE AT C/O OF 37TH ST. NORTH = 1/4 CORNER 1/2 MILE WEST OF 37TH ST. NORTH AND MAIZE ROAD.
ELEV. = 1357.24 N.G.V.D.
(169.84 CITY DATUM)

MINOR OPENINGS	ELEVATION (N.G.V.D.)	CITY DATUM
BLOCK 1		
LOTS 4-6, 13-16, 40-42	1359.0	171.6
LOT 38	1360.0	172.6
LOTS 3-5, 7, 17, 24	1360.5	173.1
LOTS 8-12, 18-23	1361.9	174.5
LOT 25	1361.6	174.2
LOTS 28-30	1362.3	174.9
LOTS 36-37, 31-37	1362.6	175.2
BLOCK 2		
LOTS 1-4	1358.0	171.6
LOTS 7-10	1360.0	172.6
LOTS 11-12	1361.0	173.6
LOT 13	1362.0	174.6
BLOCK 3		
LOTS 1-10	1360.5	173.1
BLOCK 4		
LOTS 1-33	1360.5	173.1
BLOCK 5		
LOTS 1-4	1363.6	176.4
LOTS 7-10	1362.7	175.3
LOTS 11-13	1362.0	174.6
LOTS 14-17	1361.6	174.2

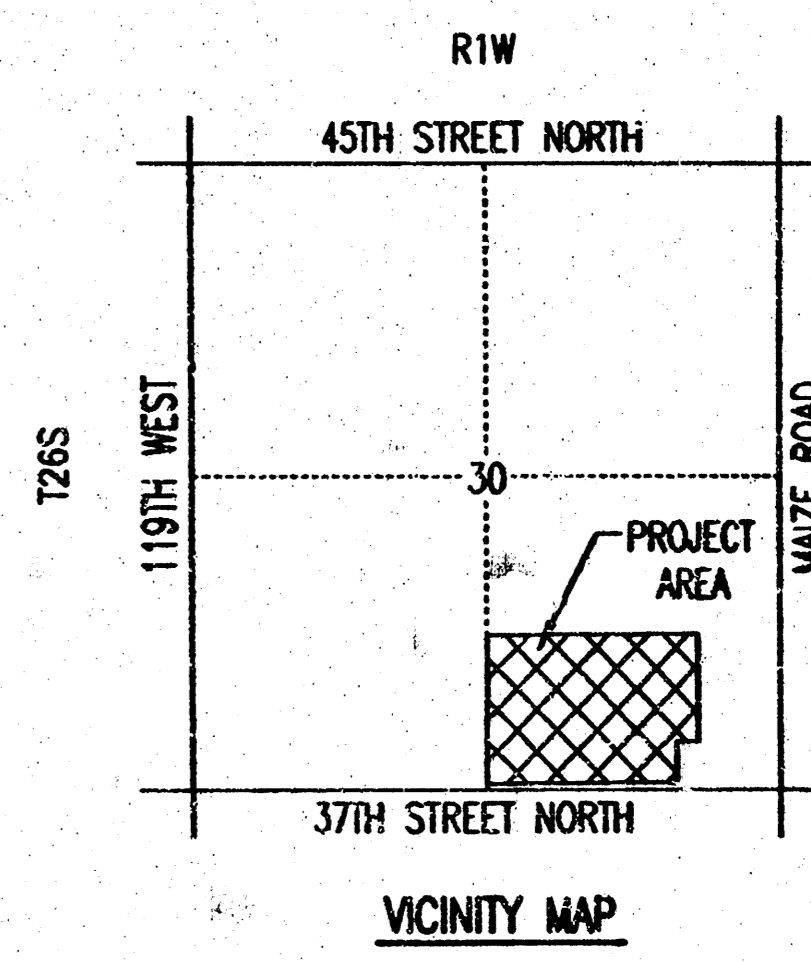
E 1/4 Corner, Sec. 30
Twp. 26S, R1W
Found #4 Bar w/ Moehring
Cap

N.E. Cor., SE 1/4, SE 1/4
Sec. 30, T26S, R1W
No Monument Found



- LEGEND**
- (SA) BASIN IDENTIFIER
 - MINOR BASIN BOUNDARY
 - MAJOR BASIN BOUNDARY
 - MAJOR STORM WATER OVERFLOW (Q100)
 - MINOR STORM WATER FLOW (Q2)
 - 300 NODE IDENTIFIER
 - STORM SEWER AND INLET
 - SPOT ELEVATION
 - HIGH POINT ELEVATION
 - MATCH EXISTING ELEVATION
- SEE SUPPORTING CALCULATIONS FOR HYDROLOGY

SCALE: 1" = 100'
ADD 100 TO SPOT ELEVATIONS FOR C.O.W. DATUM



**THIS REVISED DRAINAGE PLAN,
REVISED ON 12/18/03,
REPLACES ALL PAST DRAINAGE
PLANS FOR PRAIRIE POINTE.**

S.E. Corner
Sec. 30, T26S, R1W
Found 1/2" Rebar
w/ Moehring Cap

Professional Engineering Consultants, P.A.
303 S. TOPPER • WICHITA, KANSAS 67202
316-262-2691 • FAX 316-262-3003

DAVID D. CRANMER
ZONED: RR

JAMES M. & TERRIE M. RAMSEY
ZONED: RR

S.W. Cor. SE 1/4 of
Sec. 30, Twp. 26S, R1W
Found 1" Iron Pipe

DAVID D. CRANMER
ZONED: SF-20

ANGELA A. & KELLY E. KENDALL
ZONED: SF-20

MARY GRADY REV. TRUST
ZONED: SF-20

MUNIR & BARBARA RAZZAQ
ZONED: SF-20

DANE & JENNIFER WADLEY
ZONED: SF-20