

FOUR CORNER PLAN  
**PRAIRIE POINTE**  
 AN ADDITION TO WICHITA, SEDGWICK COUNTY, KANSAS

Center of  
 Sec. 30, T26S, R1W  
 Found Stone 30" Deep  
 Reseal 3/4" Pipe  
 w/PEC Cap

SCALE: 1" = 100'

E 1/4 Corner, Sec. 30  
 Twp. 26S, R1W  
 Found #4 Bar w/ Moehring  
 Cap

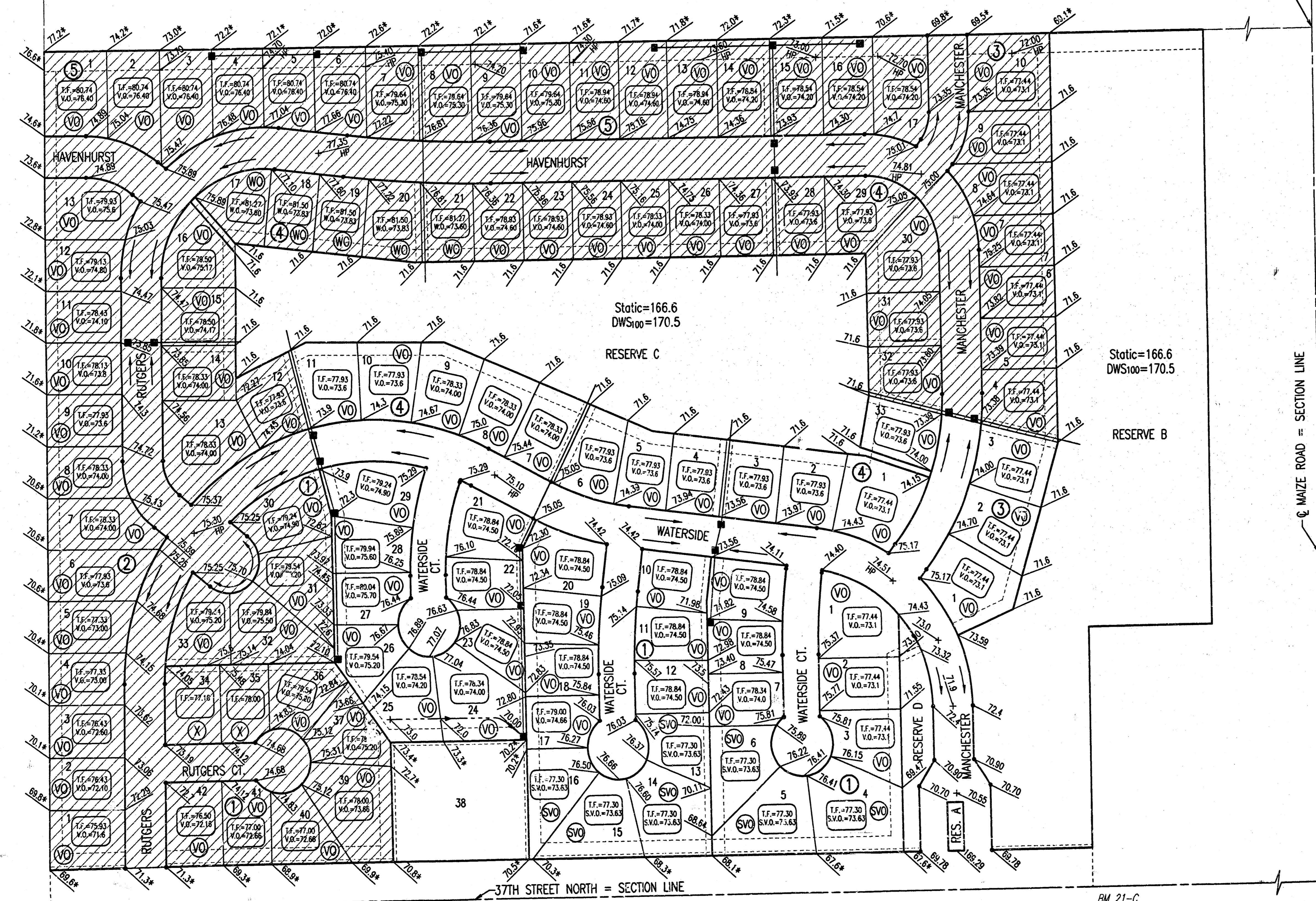
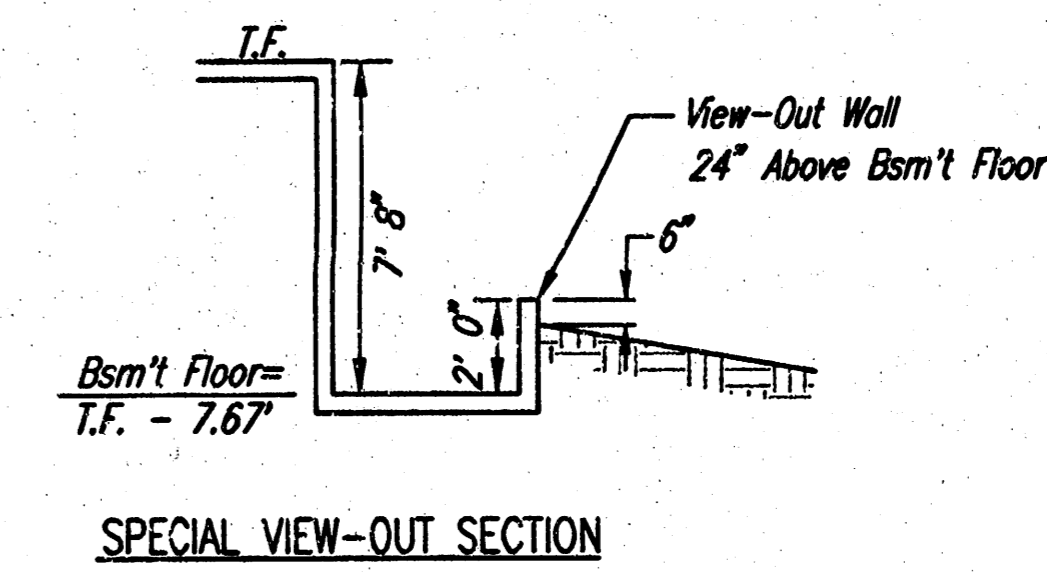
N.E. Cor., SE 1/4, SE 1/4  
 Sec. 30, T26S, R1W  
 No Monument Found

BLOCK	ELEVATION (N.G.V.D.)	CITY DATUM
<b>BLOCK 1</b>		
LOTS 4-6, 13-16, 40-42	1359.0	171.6
LOT 39	1360.0	172.6
LOTS 1-3, 7, 17, 24	1360.5	173.1
LOTS 8-12, 18-23	1361.9	174.5
LOT 25	1361.6	174.2
LOTS 28-30	1362.3	174.9
LOTS 26-27, 31-37	1362.6	175.2
<b>BLOCK 2</b>		
LOTS 1-6	1359.0	171.6
LOTS 7-10	1360.0	172.6
LOTS 11-12	1361.0	173.6
LOTS 27-30	1361.6	174.2
LOTS 13-14, 24-26	1362.0	174.6
LOTS 20-23	1362.7	175.3
LOTS 15-19	1363.6	176.4
<b>BLOCK 3</b>		
LOTS 1-10	1360.5	173.1
<b>BLOCK 4</b>		
LOTS 1-33	1360.5	173.1

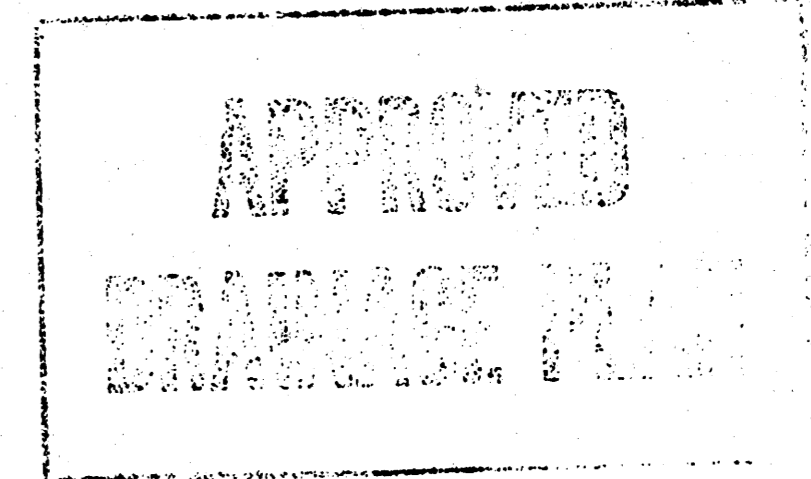
LEGEND

- (X) STD. BASEMENT
- (WO) WALK-OUT BASEMENT
- (VO) VIEW-OUT BASEMENT
- (SVO) SPECIAL VIEW-OUT BASEMENT
- STORM WATER FLOW
- SPOT ELEVATION
- W.O. WALK-OUT
- V.O. VIEW-OUT
- T.F. TOP OF FOUNDATION
- ▨ FUTURE DEVELOPMENT PHASE

VO OR WO WAS CONSIDERED ACCEPTABLE  
 IF THE TOP OF FOUNDATION WAS 5' OR  
 LESS ABOVE THE PROPERTY LINE.



25MR: SAW OPER: SAW SCALE: 1"=100.00  
 01/2004/04/17/1000/REV:ACORNER 11-30-2004 11:51:25 am



→ REVISED NOVEMBER 30, 2004  
**Prairie Pointe - Phase 1**

No.	Revision	By	Date
	PRAIRIE POINTE-PHASE 1		
<b>4-CORNER LOT GRADING PLAN</b> (FOR INFORMATION ONLY)			
JAMES L. ARMOUR, P.E.-ACTING CITY ENGINEER CITY OF WICHITA PROJECT NO. 472-84023			
<b>Professional Engineering Consultants, P.A.</b> 303 S. TOPPER • WICHITA, KANSAS 67202 316-262-2691 • FAX 316-262-3003			
Designed by	BDB, BLB	Job No.	35-04171-000
Drawn by	BJS	Date	May 2002
		Sheet	4 of 50

1&E Reviewed 01/13/2004 R.A. CARD MARKED 3/2004