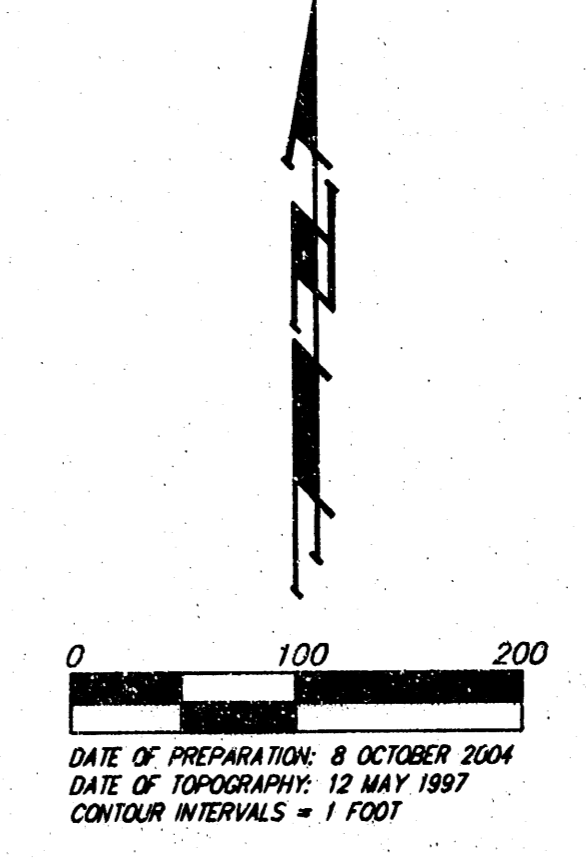
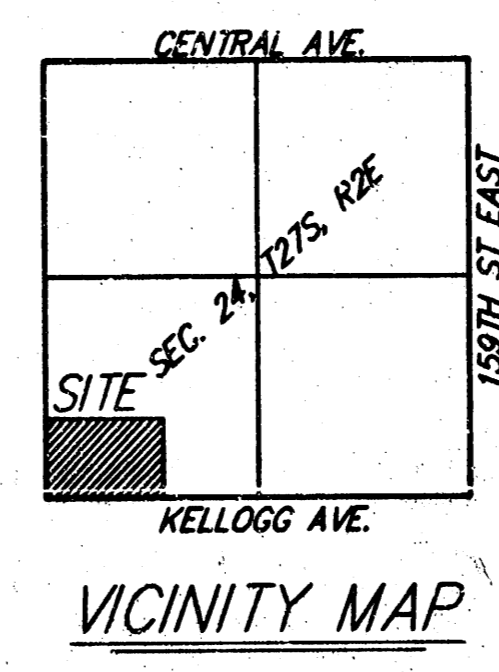
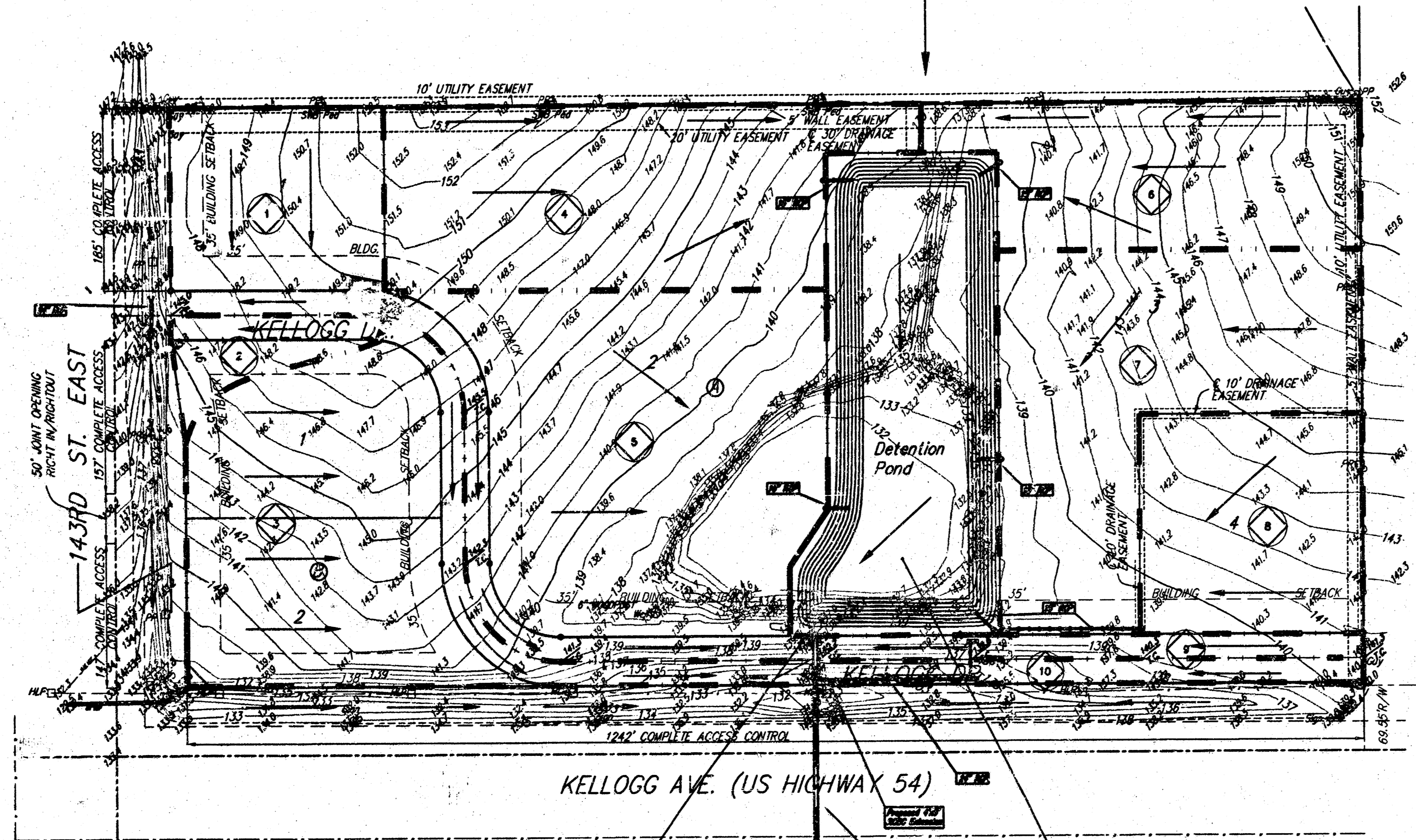


DRAINAGE PLAN PRAIRIE POND PLAZA ADDITION WICHITA, SEDGWICK COUNTY, KANSAS

OFF-SITE DRAINAGE
 D.A. = 36 acres
 Tc = 15 min
 CN = 80
 Q₂ = 83 cfs
 Q₁₀ = 140 cfs
 Q₁₀₀ = 232 cfs



Basin ID	Area acres	Flowrates		
		2-yr cfs	10-yr cfs	100-yr cfs
1	1.1	2.0	3.2	5.7
2	0.3	0.6	0.9	1.6
3	6.5	12.1	19.0	33.7
4	2.1	3.9	6.1	10.9
5	3.3	6.1	9.6	17.1
6	1.4	2.6	4.1	7.3
7	2.2	4.1	6.4	11.4
8	1.2	2.2	3.5	6.2
9	0.3	0.6	0.9	1.6
10	0.3	0.6	0.9	1.6

EXISTING CONDITIONS
 D.A. = 52 acres
 Tc = 15 min
 CN = 80
 Q₂ = 120 cfs
 Q₁₀ = 195 cfs
 Q₁₀₀ = 336 cfs

POND DATA
 Static WS Elev = 133.0 City Datum
 100-yr WS Elev = 138.6 City Datum
 Q₁₀₀ Peak Inflow = 382 cfs
 Q₁₀₀ Peak Outflow = 184 cfs