

DRAINAGE ANALYSIS SUMMARY
PRAIRIE WOODS SECOND ADDITION

Area ID**	Area ac	Accum. Area ac	C2	C100	Tc2 min	Tc100 min	I2 in/hr	I100 in/hr	Q2 cfs	Q100 cfs	Inlet Size ft	Pipe Size in	Min Slope %	COMMENTS
A	2.7		0.44	0.61	20	15	3.83	7.37	3.96	12.14	area inlet	24	0.40%	100 yr design, sump, area inlet
B	1.6		0.44	0.61	15	15	3.83	7.37	2.70	7.19	10			100 yr design, sump, curb inlet
A+B	4.3		0.44	0.61	20	15	3.83	7.37	6.30	19.33		30	0.40%	100 yr design
C	0.6		0.44	0.61	15	15	3.83	7.37	1.01	2.70	5			100 yr design, sump, curb inlet
A+B+C	4.9		0.44	0.61	15	15	3.83	7.37	8.26	22.03		30	0.40%	100 yr design
E	3.1		0.44	0.61	15	15	3.83	7.37	5.22	13.94	10	24	0.40%	100 yr design, sump, curb inlet
F	1.8		0.44	0.61	15	15	3.83	7.37	3.03	8.09	10			100 yr design, sump, curb inlet
E+F	4.9		0.44	0.61	15	15	3.83	7.37	8.26	22.03		30	0.40%	100 yr design
G	0.5		0.44	0.61	15	15	3.83	7.37	0.84	2.25	area inlet	15	0.40%	100 yr design, sump, area inlet
H	0.5		0.44	0.61	15	15	3.83	7.37	0.84	2.25	area inlet			100 yr design, sump, area inlet
E+F+G+H	5.9		0.44	0.61	15	15	3.83	7.37	9.94	26.52		30	0.40%	100 yr design
D	0.7		0.44	0.61	15	15	3.83	7.37	1.18	3.15	area inlet			100 yr design, sump, area inlet
A+B+C+D+E+F+G+H	10.8		0.44	0.61	20	15	3.83	7.37	15.82	45.55		42	0.40%	100 yr design
I	1.5		0.44	0.61	15	15	3.83	7.37	2.53	6.74	5			100 yr design, sump, curb inlet
A+B+C+D+E+F+G+H+I	12.3		0.44	0.61	23	17	3.73	7.00	20.19	52.52		42	0.40%	100 yr design
J	2.3		0.44	0.61	15	15	3.83	7.37	3.88	10.34	10			100 yr design, sump, curb inlet
A+B+C+D+E+F+G+H+I+J	14.6		0.44	0.61	23	17	3.73	7.00	23.96	62.34		42	0.40%	100 yr design
K	1.0		0.44	0.61	15	15	3.83	7.37	1.68	4.50	area inlet	15	0.40%	100 yr design, sump, area inlet
L	0.8		0.44	0.61	15	15	3.83	7.37	1.35	3.60	area inlet	15	0.40%	100 yr design, sump, area inlet
M	0.4		0.44	0.61	15	15	3.83	7.37	0.67	1.80	area inlet			100 yr design, sump, area inlet
A+B+C+D+E+F+G+H+I+J+K+L+M	16.6		0.44	0.61	27	20	2.84	6.53	20.99	66.92		42	0.40%	100 yr design

f:\wp\project\199606167\Drainage

1 of 2

Mid-Kansas Engineering Consultants, Inc.

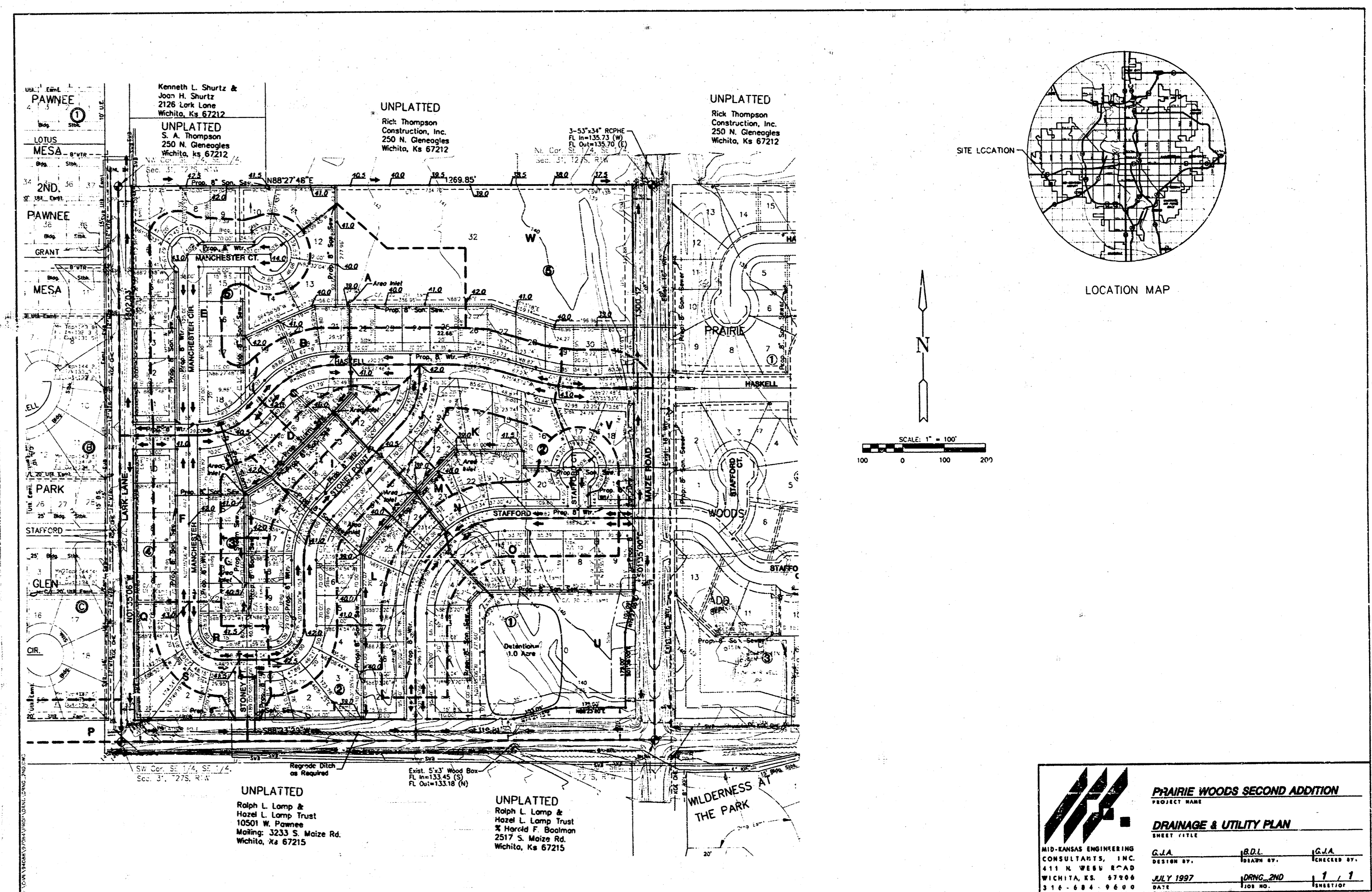
DRAINAGE ANALYSIS SUMMARY
PRAIRIE WOODS SECOND ADDITION

Area ID**	Area ac	Accum. Area ac	C2	C100	Tc2 min	Tc100 min	I2 in/hr	I100 in/hr	Q2 cfs	Q100 cfs	Inlet Size ft	Pipe Size in	Min Slope %	COMMENTS
N	2.2		0.44	0.61	15	15	3.83	7.37	3.71	9.89	10			100 yr design, sump, curb inlet
A+B+C+D+E+F+G+H+I+J+K+L+M+N	19.0		0.44	0.61	27	20	2.84	6.53	23.74	75.68		48	0.40%	100 yr design
O	1.5		0.44	0.61	15	15	3.83	7.37	2.53	6.74	5			100 yr design, sump, curb inlet
A+B+C+D+E+F+G+H+I+J+K+L+M+N+O	20.5		0.44	0.61	27	20	2.84	6.53	25.62	81.66		48	0.40%	100 yr design
P	2.0		0.44	0.61	15	15	3.83	7.37	3.37	8.99	24			100 yr design, cross road pipe
Q	2.0		0.44	0.61	22	17	3.17	7.00	2.79	8.54				100 yr design, sump
P+Q	4.0		0.44	0.61	22	17	3.17	7.00	3.58	17.08		30	0.40%	100 yr design, cross road pipe
R	0.4		0.44	0.61	15	15	3.83	7.37	0.67	1.80	5	15	0.40%	100 yr design, sump, curb inlet
S	0.8		0.44	0.61	15	15	3.83	7.37	1.35	3.60	5			100 yr design, sump, curb inlet
R+S	1.2		0.44	0.61	15	15	3.83	7.37	2.02	5.39		18	0.40%	100 yr design
P+Q+R+S	5.2		0.44	0.61	22	17	3.17	7.00	7.25	22.20		30	0.40%	100 yr design
T	1.5		0.44	0.61	22	17	3.17	7.00	2.79	8.41				100 yr design, sump
P+Q+R+S+T	6.7		0.44	0.61	22	17	3.17	7.00	9.35	28.61		36	0.40%	100 yr design, cross road pipe
U	5.3		0.44	0.61	22	17	3.17	7.00	7.39	22.63				100 yr design, sump
A THROUGH U	32.5		0.44	0.61	27	20	2.84	6.53	40.61	129.46		5' X 4' RCB	0.40%	100 yr design, RCB crossing Pawnee
V	1.4		0.44	0.61	15	15	3.83	7.37	2.36	6.29		18	0.40%	100 yr design, cross road pipe
W	6.7		0.44	0.61	22	17	3.17	7.00	9.35	28.61				100 yr design, sump
V+W	8.1		0.44	0.61	27	20	2.84	6.53	10.12	32.26		EX 3-53'X34' RCPHE		

f:\wp\project\199606167\Drainage

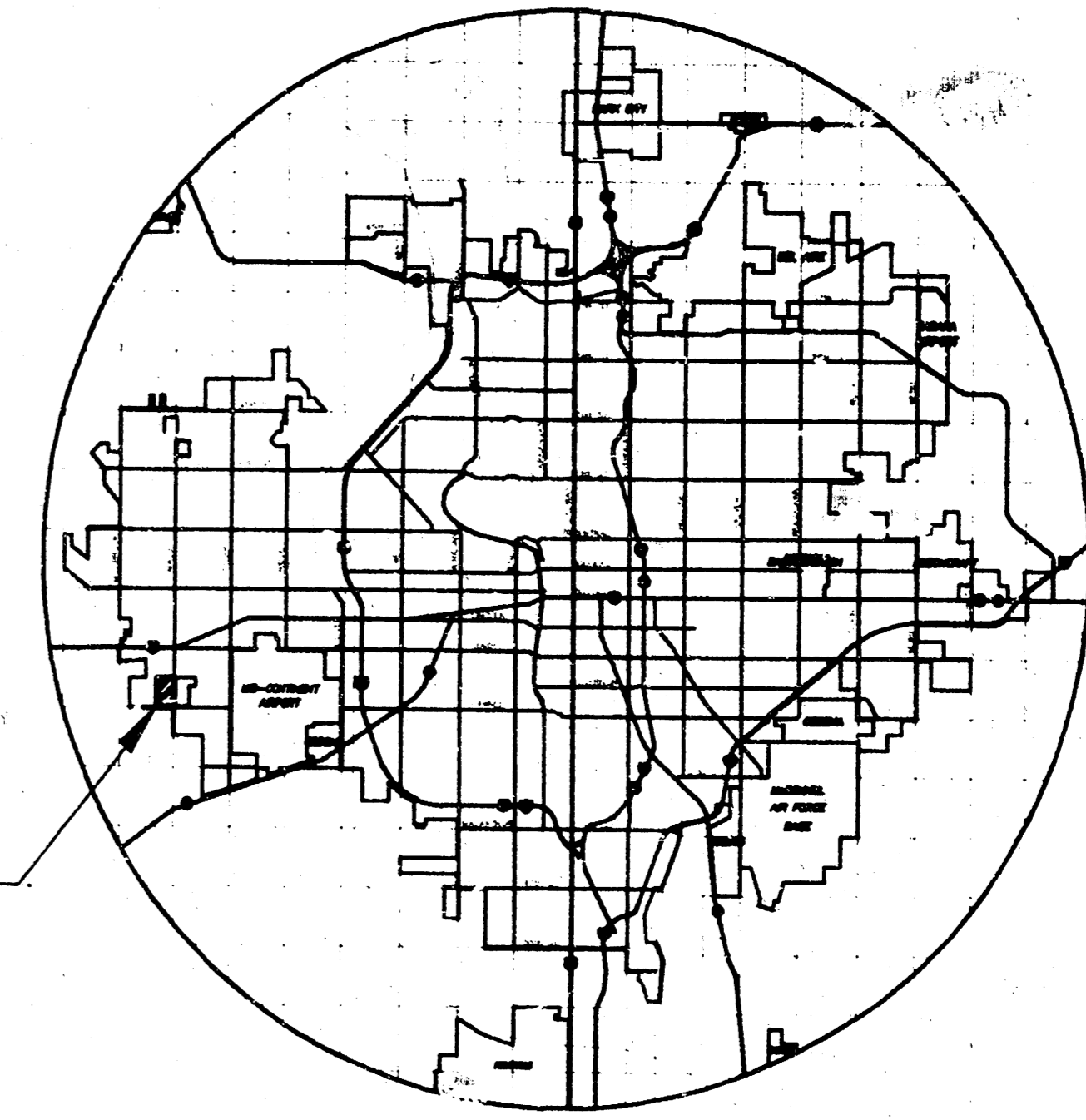
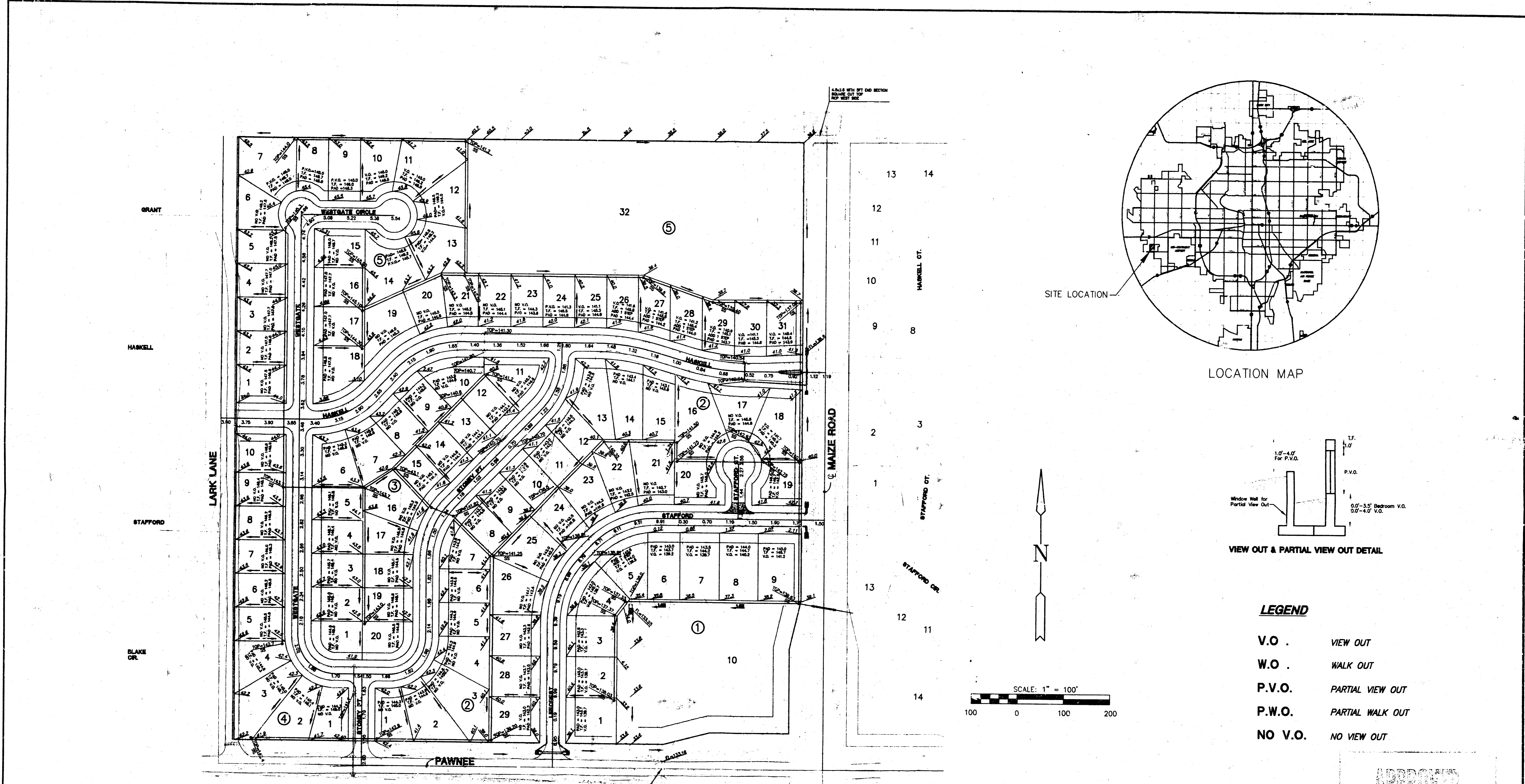
2 of 2

Mid-Kansas Engineering Consultants, Inc.

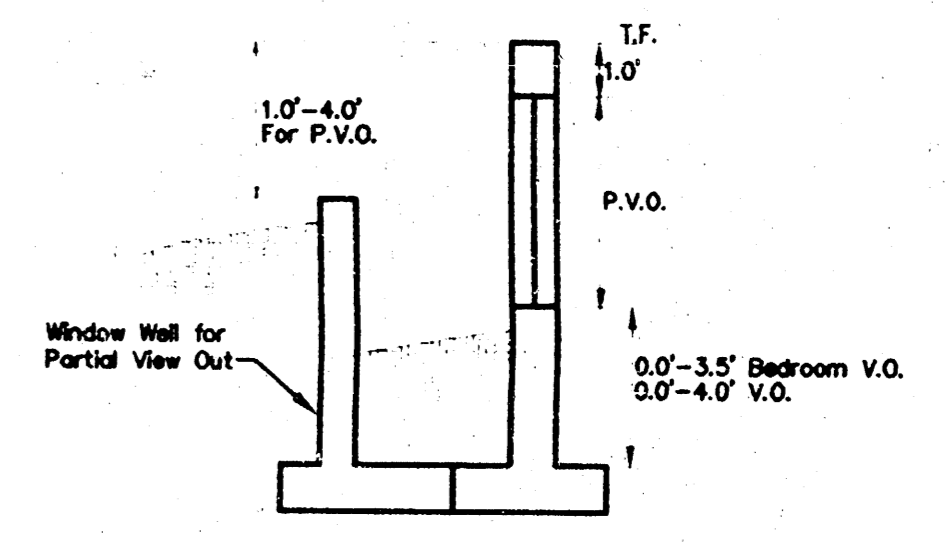


PRAIRIE WOODS SECOND ADDITION
DRAINAGE & UTILITY PLAN
 SHEET TITLE
 MID-KANSAS ENGINEERING CONSULTANTS, INC. 411 N. WEBB ST. WICHITA, KS 67204
 C.J.A. 10-14
 411 N. WEBB ST. WICHITA, KS 67204
 DATE: JULY 1997
 1 of 2

K:\CIVIL\98065\98065\GRADING.DWG 17 JUN 17 12:03:05 1998



LOCATION MAP

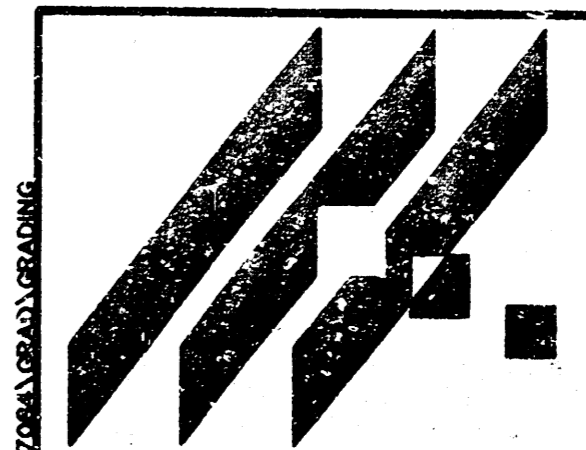


VIEW OUT & PARTIAL VIEW OUT DETAIL

LEGEND

- V.O . VIEW OUT
- W.O . WALK OUT
- P.V.O. PARTIAL VIEW OUT
- P.W.O. PARTIAL WALK OUT
- NO V.O. NO VIEW OUT

APPROVED
GRADING PLAN



PRAIRIE WOODS SECOND ADDITION
PROJECT NAME

GRADING PLAN
SHEET TITLE

MID-KANSAS ENGINEERING
CONSULTANTS, INC.
411 N WEBB ROAD
WICHITA, KS. 67206
316-684-9600

JTC DESIGN BY.	DAC/KLH DRAWN BY.	JTC CHECKED BY.
MAY 1998 DATE	97084 JOB NO.	1 / 1 SHEET/OF