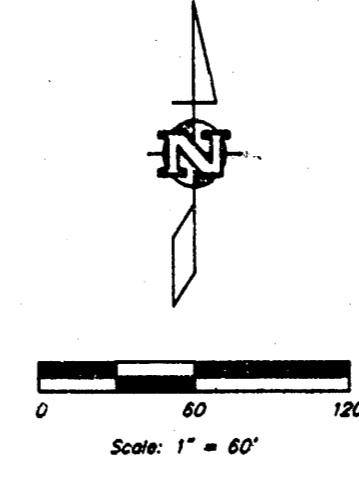
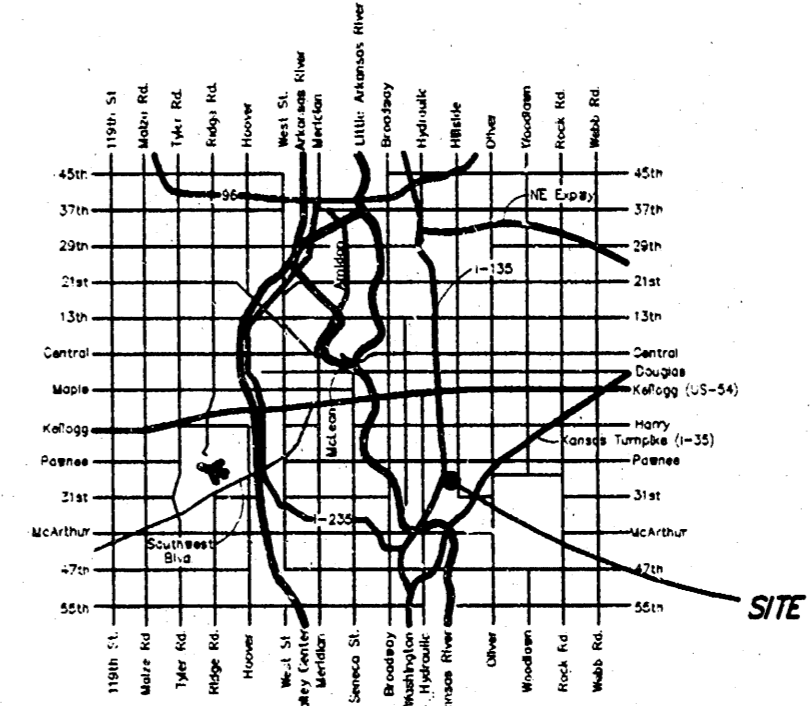
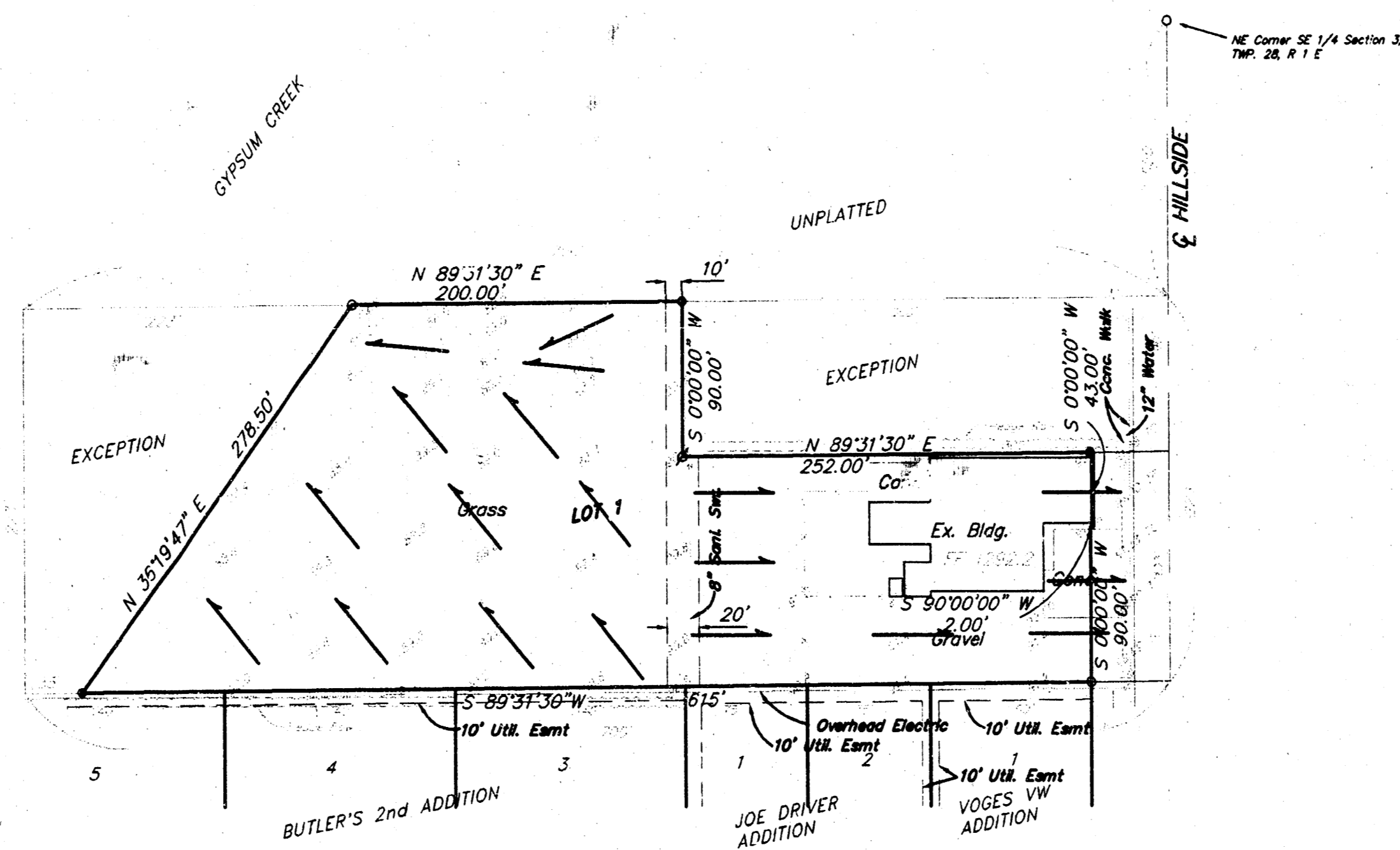


DRAINAGE PLAN
PRECISION METALCRAFT ADDITION
 WICHITA, SEDGWICK COUNTY, KANSAS

RECORDED
 City of Wichita Building Div.
 41 Corner of Bridge & Noble
 2nd Square, Omaha, Neb.
 Date - 12/17/96, (104.34 City Dollars)



- LEGEND
- 1/2" Pipe Found
 - ⊗ 3/4" Pipe Found
 - Set 1/2" Meter & Cap



LOCATION MAP

- NOTES
1. Property is zoned U
 2. Topo made February, 1997

Austin Miller, P.E.
 ENGINEERING SERVICES
 224 S. Lewis, Suite 210, Wichita, Kansas, 67201 • 313-262-1111