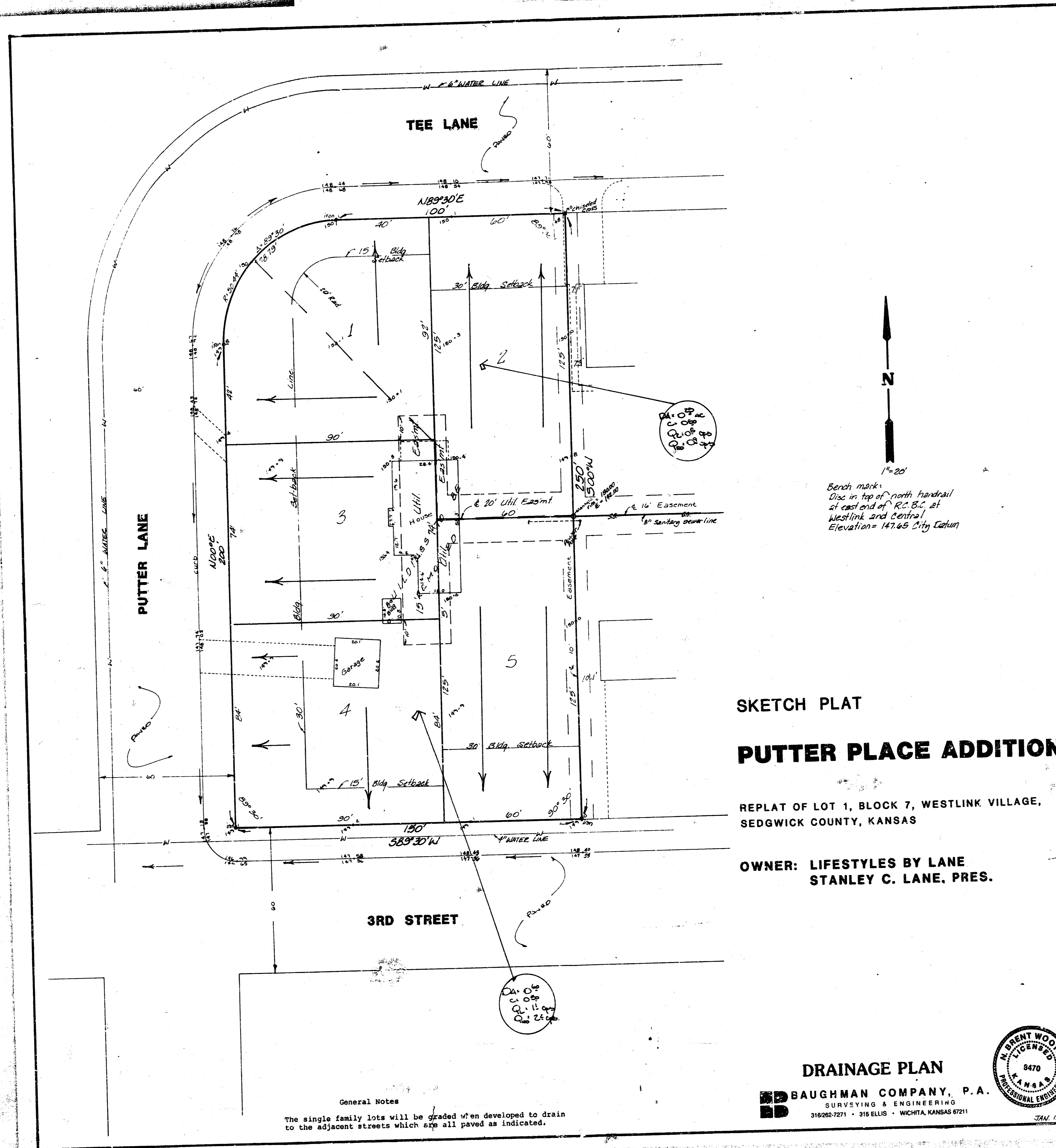


PUTTER PLACE
(Drainage)



1"=20'

Bench mark
Disc in top of north handrail
at east end of R.C.B.C. at
Westlink and Central
Elevation = 147.65 City Datum

SKETCH PLAT

PUTTER PLACE ADDITION

REPLAT OF LOT 1, BLOCK 7, WESTLINK VILLAGE,
SEDDGWICK COUNTY, KANSAS

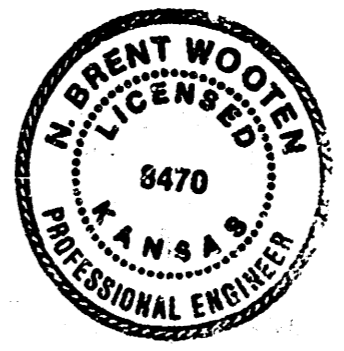
OWNER: LIFESTYLES BY LANE
STANLEY C. LANE, PRES.

General Notes

The single family lots will be graded when developed to drain
to the adjacent streets which are all paved as indicated.

DRAINAGE PLAN

BAUGHMAN COMPANY, P.A.
SURVEYING & ENGINEERING
318262-7271 • 318 ELLIS • WICHITA, KANSAS 67211



JAN. 12, 1987