

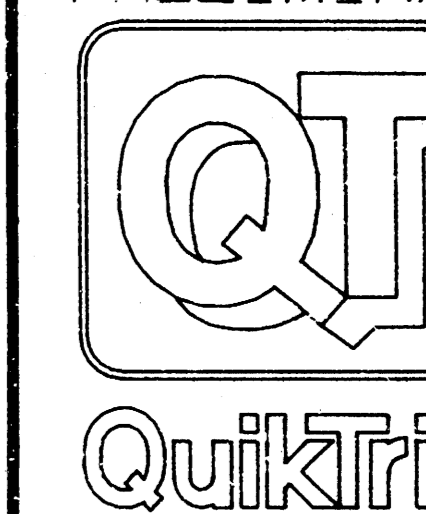
**HOLLOWAY ARCHITECTS**

14900 WEST 87TH STREET PARKWAY  
SUITE 100, LENEXA, KANSAS 66215  
913-894-0707 FAX 913-894-9291

**QUIKTRIP NO. 313R**

31ST STREET SOUTH AND HILLSIDE AVE., WICHITA, KANSAS

PRELIMINARY



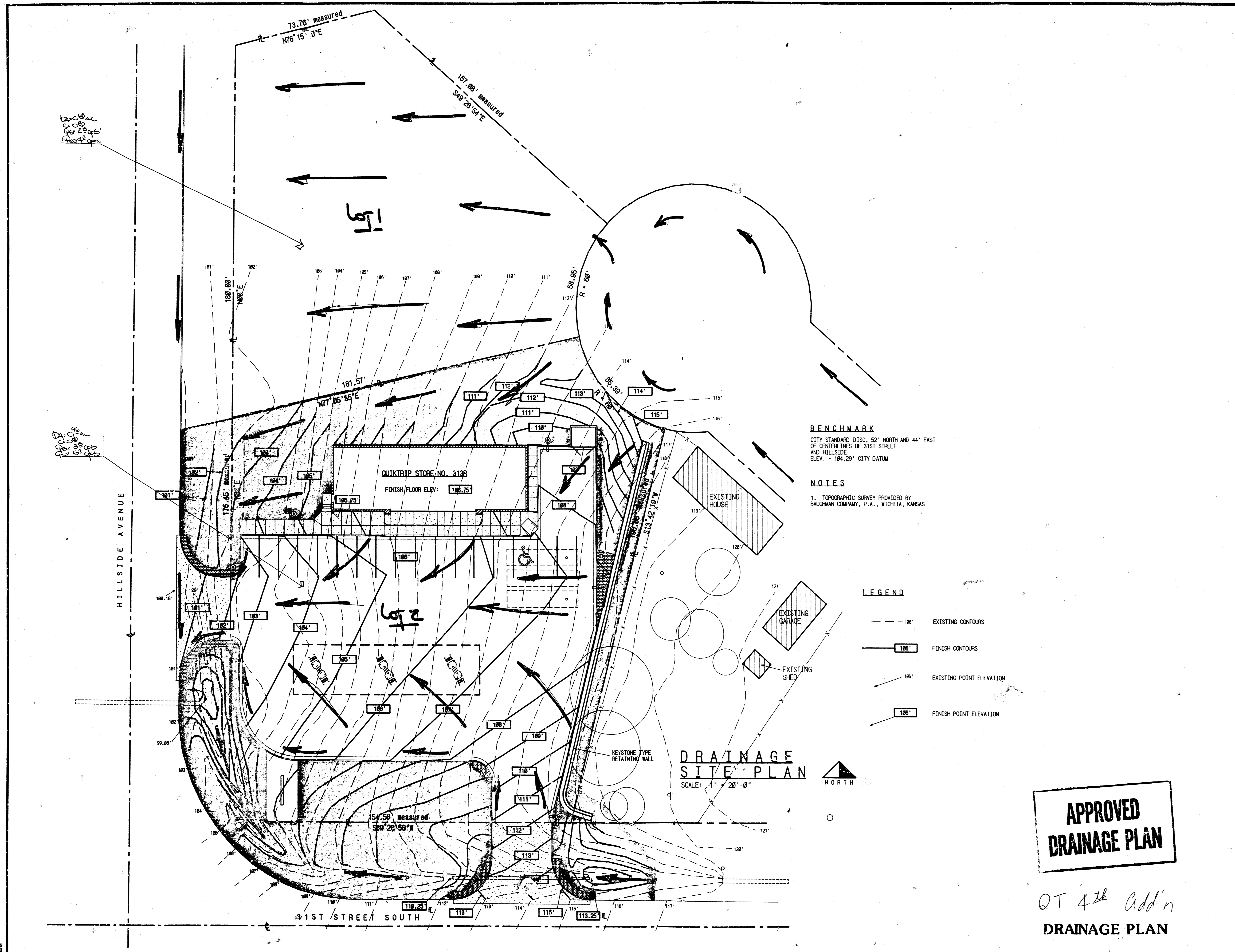
db.qt313r

REVISIONS  
12/7/90

DATE: 11/30/90  
SHEET NUMBER

**2**

OF 3



**BENCHMARK**  
CITY STANDARD DISC, 52' NORTH AND 44' EAST  
OF CENTER LINES OF 31ST STREET  
AND HILLSIDE  
ELEV. = 104.29' CITY DATUM

**NOTES**  
1. TOPOGRAPHIC SURVEY PROVIDED BY  
BAUGHMAN COMPANY, P.A., WICHITA, KANSAS

**LEGEND**

- - - - - 106' EXISTING CONTOURS
- - - - - 106' FINISH CONTOURS
- 106' EXISTING POINT ELEVATION
- 106' FINISH POINT ELEVATION

**DRAINAGE SITE PLAN**

SCALE: 1" = 20'-0"



**APPROVED DRAINAGE PLAN**

QT 4th Add'n  
**DRAINAGE PLAN**