



1000 WEST 87TH STREET PARKWAY  
SUITE 100, LENEXA, KANSAS 66215  
913-884-0707 FAX 913-884-8291

QUIKTRIP  
NO. 301

21ST ST. & ARKANSAS  
WICHITA, KANSAS



QuikTrip  
PRELIMINARY

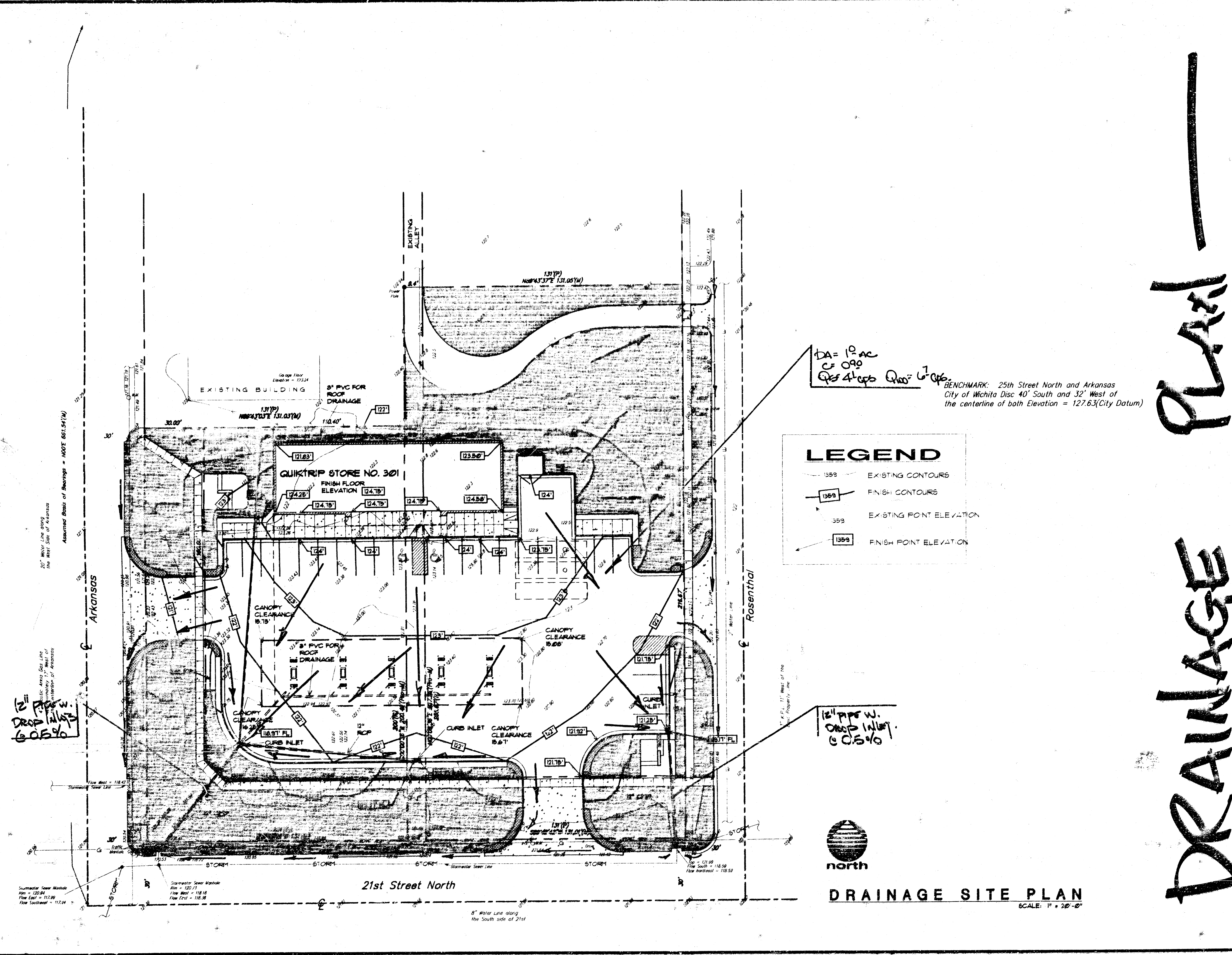
FILE  
GT30 Dwg

REVISIONS

DATE: 6/8/05  
SHEET NUMBER

2

DRAINAGE PLAN



DA = 10 AC  
C = 0.90  
Per 4' c/s Q<sub>100</sub> = 6.7 cfs

BENCHMARK: 25th Street North and Arkansas  
City of Wichita Disc 40' South and 32' West of  
the centerline of both Elevation = 127.63 (City Datum)

**LEGEND**

- 135.9 — EXISTING CONTOURS
- 135.9 — FINISH CONTOURS
- 135.9 — EXISTING POINT ELEVATION
- 135.9 — FINISH POINT ELEVATION

12" pipe w.  
Drop Inlet  
0.5%



DRAINAGE SITE PLAN  
SCALE: 1" = 20'-0"

C:\ACAD\DWG\01301 - Thu Jul 8 14:22:37 1995 HOLLOWAY ARCHITECTS / NTH

Stormwater Sewer Manhole  
Flow East = 112.84  
Flow South = 117.29  
Flow Southwest = 117.04

Stormwater Sewer Manhole  
Flow East = 120.11  
Flow West = 118.18  
Flow East = 118.38

21st Street North

8" Water Line along  
the South side of 21st

20" Water Line along  
the West Side of Arkansas

Assumed Basis of Bearings = NAD 83 (N)