

# DRAINAGE PLAN

## R & L CARPENTER 3RD ADDITION

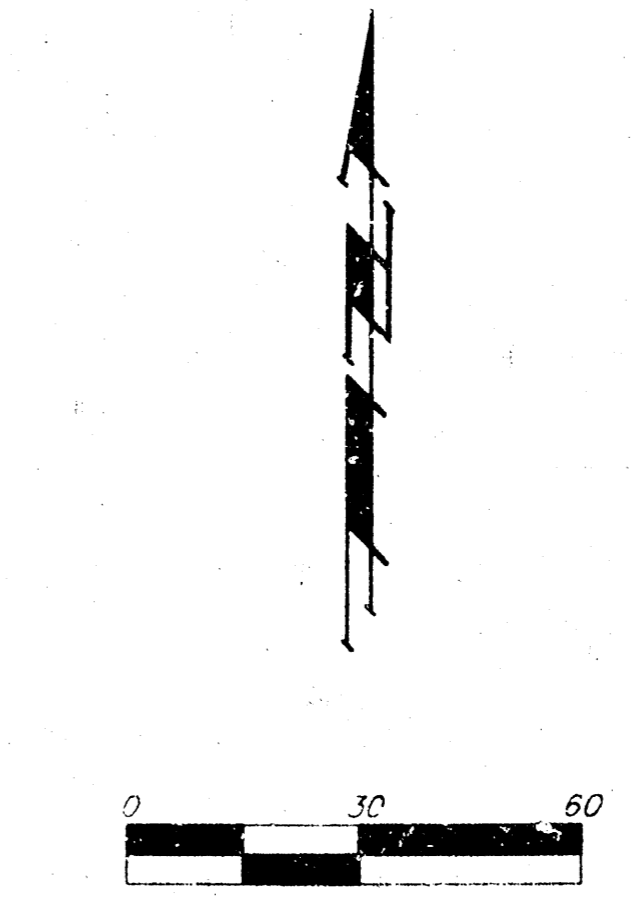
### WICHITA, SEDGWICK COUNTY, KANSAS

**OWNER:**  
 WILLIAM J. DOLYER, JR.  
 200 W. DOUGLAS  
 WICHITA, KANSAS 67211  
 (316) 265-9311

**CONTRACT PURCHASER:**  
 ROGER CARPENTER  
 R & L CARPENTER ENTERPRISES, L.L.C.  
 P.O. BOX 1207  
 COFFEYVILLE, KANSAS 67337  
 (316) 251-7720

**BENCHMARK:**  
 WOODLAWN AND 37TH ST NORTH  
 CITY OF WICHITA BENCHMARK - CITY DISC  
 SOUTHEAST CORNER INTERSECTION  
 75.7' EAST AND 56.3' SOUTH  
 OF CENTER LINE 10TH  
 ELEVATION = 183.04 (CITY DATUM)

Excess Runoff to be Detained  
 in Area Shown. Allowable Release Rate  
 Not to Exceed Flow Rate of Existing Condition.  
 Approximate Volume Req'd = 5700 c.f.

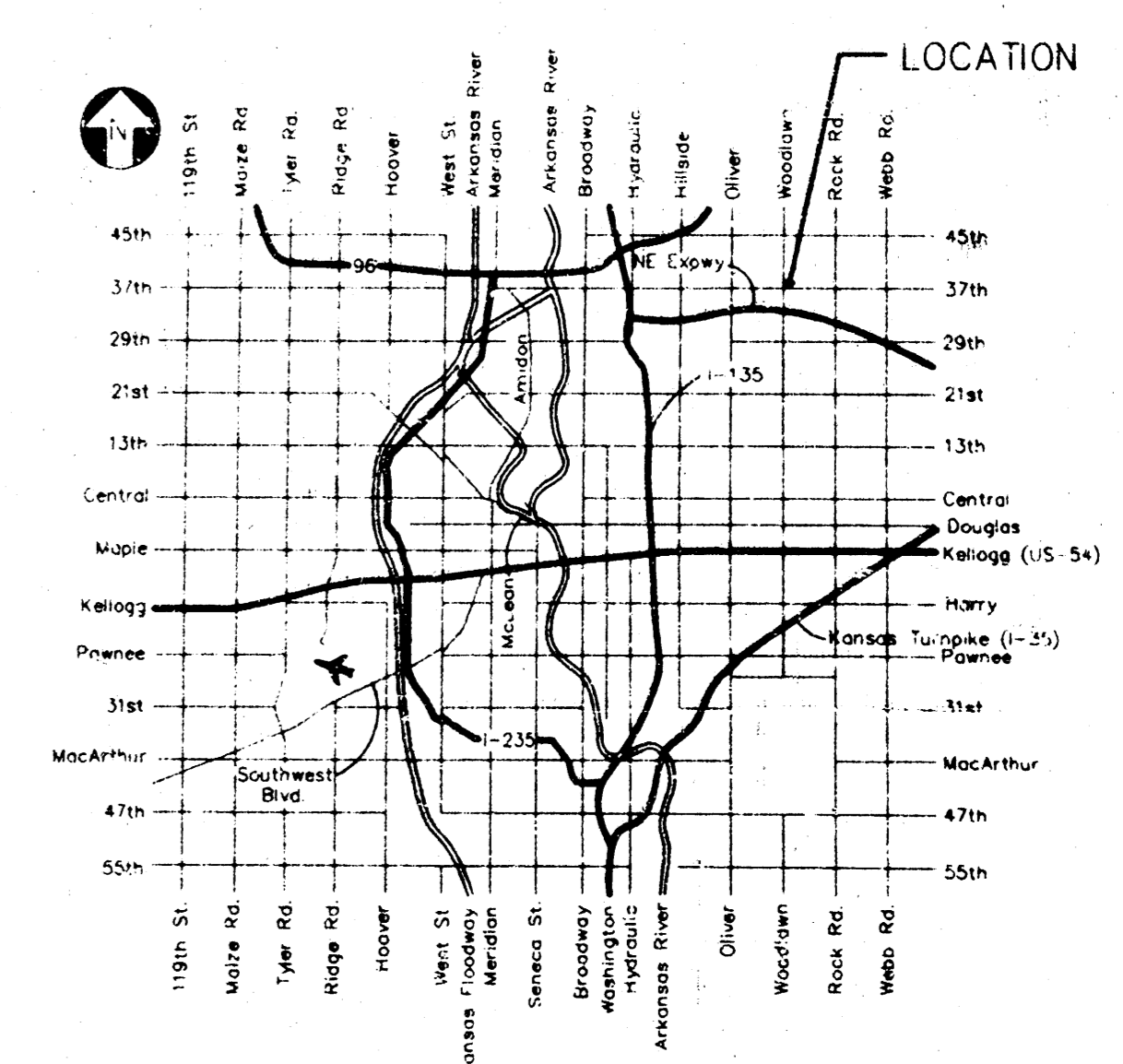


- LEGEND:**
- = MEASURED DISTANCE
  - (M) = MEASURED DISTANCE
  - (P) = PLATTED DISTANCE
  - = #4 REBAR W/ "BAUGHMAN" CAP (SET)
  - = 1/2" IRON (FOUND)
  - ∇ = 1/2" NOTCH (FOUND)
  - ⊙ = 3/4" IRON IN THIMBLE (FOUND)
  - ⊘ = 5/8" REBAR W/ "GARBER" CAP (FOUND)
  - ⋯ = LIGHT POLE
  - ⊞ = ELECTRIC BOX
  - ⊞ = W/BE TRANSFORMER
  - ⊞ = SIGN
  - = SANITARY SEWER MANHOLE
  - ⊞ = SOUTHWESTERN BELL TELEPHONE PEDESTAL
  - = TREE

MINIMUM BUILDING PAD ELEVATION FOR LOWEST OPENING TO STRUCTURE:

LOT(S)	ELEVATION (PER CITY DATUM)
1 & 2	173.00

Existing Conditions	Developed Conditions
Area = 1.7 acres	Area = 1.7 acres
T <sub>c</sub> = 15 min.	T <sub>c</sub> = 15 min.
"C" = 0.4	"C" = 0.9
Q <sub>1</sub> = 2.6 cfs	Q <sub>1</sub> = 5.9 cfs
Q <sub>2</sub> = 3.5 cfs	Q <sub>2</sub> = 8.0 cfs
Q <sub>3</sub> = 5.0 cfs	Q <sub>3</sub> = 11.3 cfs

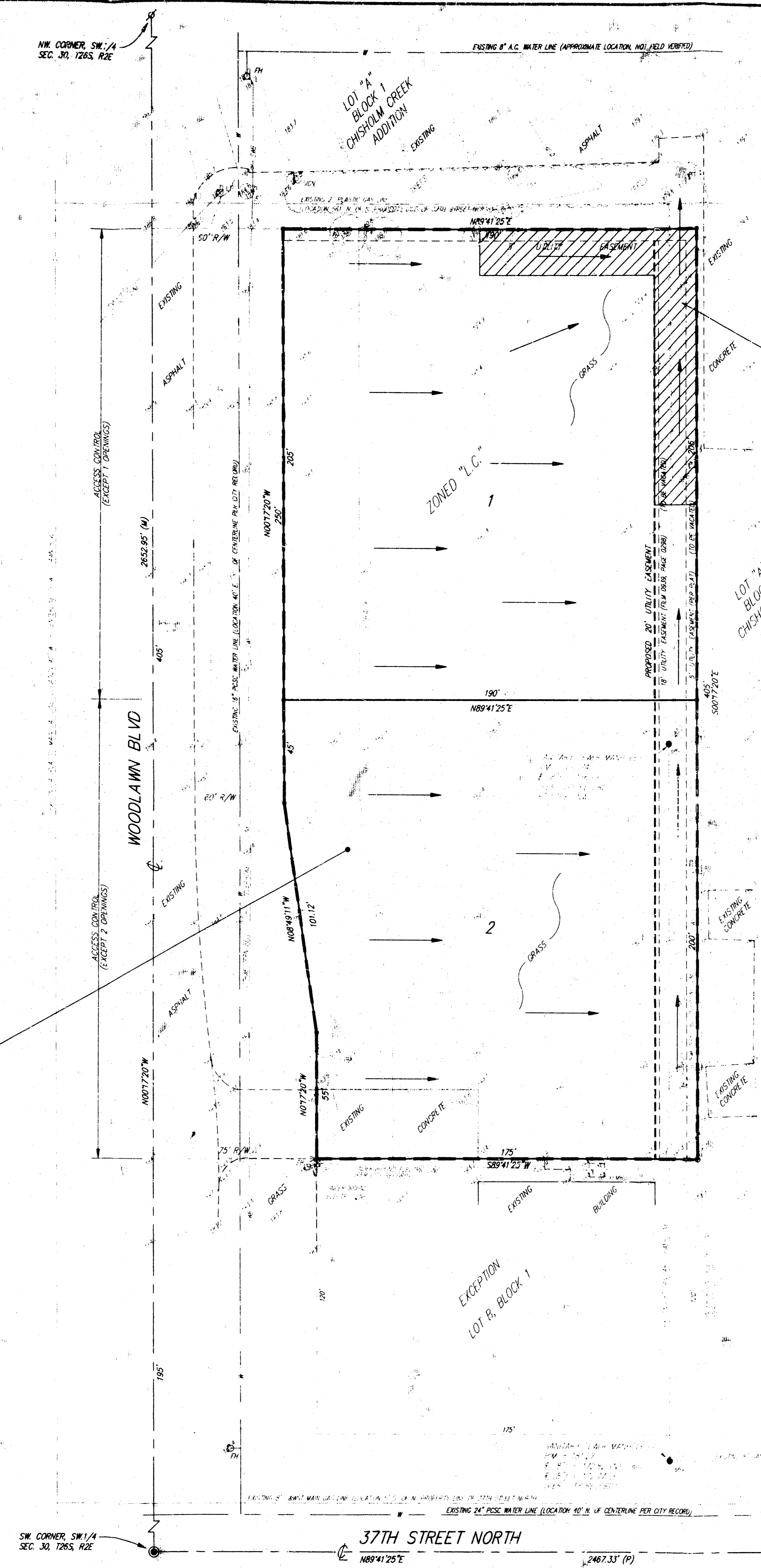


**NOTE:** The proposed drainage plan provided herein is a generally defined plan to follow for design. It is recognized and assumed that upon the final design of street and storm sewer improvements within this plat that the designer will modify or alter the general drainage plan as necessary in order to implement the installation of the improvements to obtain the most economical design and construction possible.

**VICINITY MAP**

31 MARCH 1997

**BAUGHMAN COMPANY P.A.**  
 ENGINEERING, SURVEYING, & PLANNING



# DRAINAGE PLAN

## R & L CARPENTER 3RD ADDITION

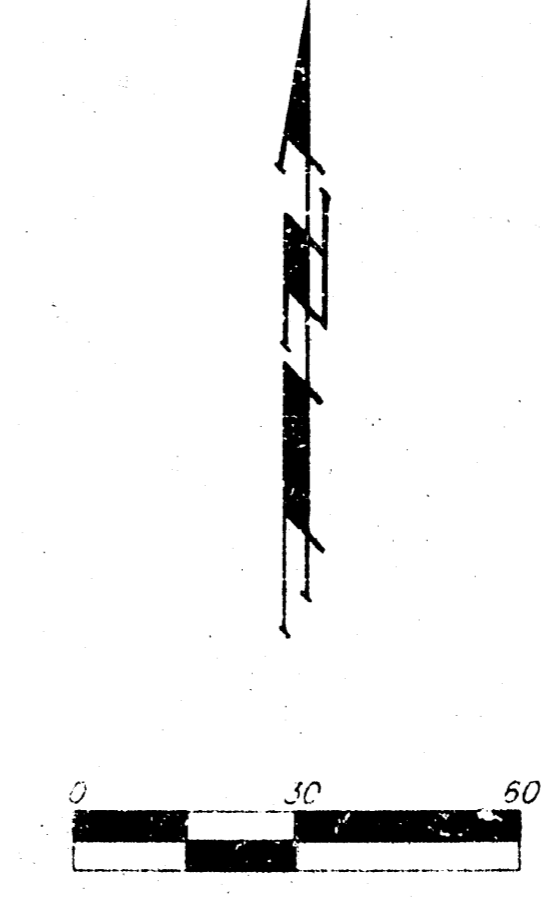
### WICHITA, SEDGWICK COUNTY, KANSAS

**OWNER:**  
 WILLIAM J. OLIVER, JR.  
 200 W. DOUGLAS  
 WICHITA, KANSAS 67211  
 (316) 265-9311

**CONTRACT PURCHASER:**  
 ROGER CARPENTER  
 R & L CARPENTER ENTERPRISES, L.L.C.  
 P.O. BOX 1207  
 COTTLEVILLE, KANSAS 67337  
 (316) 251-7720

**BENCH MARK:**  
 WOODLAWN AND 37TH ST NORTH  
 CITY OF WICHITA BENCH MARK - CITY DISC  
 SOUTHEAST CORNER INTERSECTION  
 15.7' EAST AND 56.3' SOUTH  
 OF CENTER LINE BOTH  
 ELEVATION = 183.64 (CITY DATUM)

Excess Runoff to be Detained  
 in Area Shown. Allowable Release Rate.  
 Not to Exceed Flow Rate of Existing Condition.  
 Approximate Volume Ret'd = 5700 c.f.



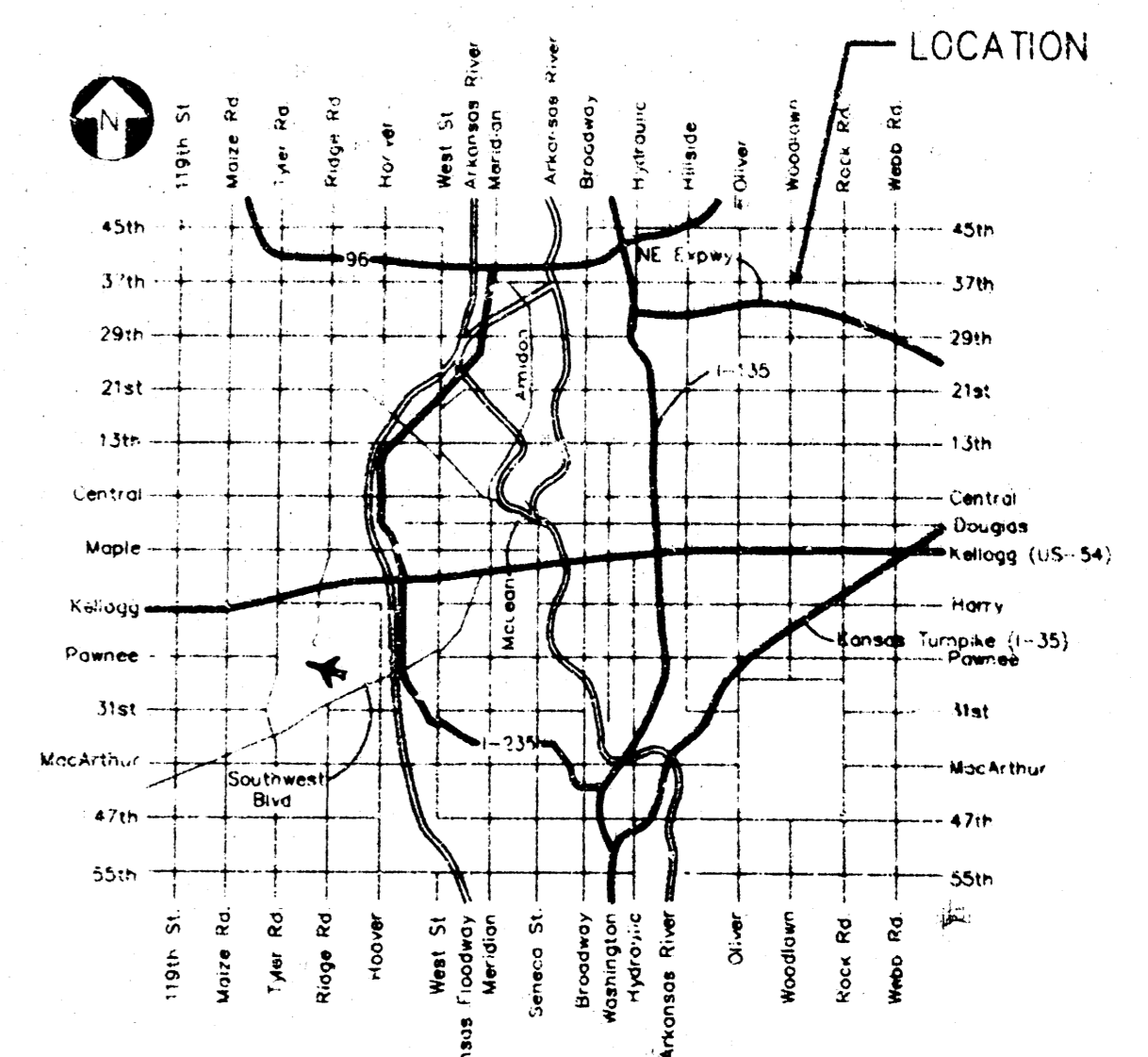
- LEGEND:**
- MEASURED DISTANCE
  - (M) MEASURED DISTANCE
  - (P) PLATTED DISTANCE
  - #4 REBAR W/ "BAUGHMAN" CAP (SET)
  - 1/2" IRON (FOUND)
  - ∇ 1" NOTCH (FOUND)
  - ⊙ 3/4" IRON IN CHIMBLE (FOUND)
  - ⊗ 5/8" REBAR W/ "BARBER" CAP (FOUND)
  - LIGHT POLE
  - ⊞ ELECTRIC BOX
  - ⊞ KVA TRANSFORMER
  - ⊞ SIGN
  - SANITARY SEWER MANHOLE
  - ⊞ SOUTHWESTERN BELL TELEPHONE PEDESTAL
  - ≡ TREE

MINIMUM BUILDING PAD ELEVATION FOR LOWEST OPENING TO STRUCTURE.

LOT(S)	ELEVATION (PER CITY DATUM)
1 & 2	123.00

Existing Conditions	Developed Conditions
Area = 1.7 acres	Area = 1.7 acres
Tc = 15 min.	Tc = 15 min.
"C" = 0.4	"C" = 0.9
Q <sub>s</sub> = 2.6 cfs	Q <sub>s</sub> = 5.9 cfs
Q <sub>10</sub> = 3.5 cfs	Q <sub>10</sub> = 8.0 cfs
Q <sub>100</sub> = 5.0 cfs	Q <sub>100</sub> = 11.3 cfs

**NOTE:** The proposed drainage plan provided herein is a generally defined plan to follow for design. It is recognized and assumed that upon the final design of street and storm sewer improvements within this plat that the designer will modify or alter the general drainage plan as necessary in order to implement the installation of the improvements to obtain the most economical design and construction possible.



**VICINITY MAP**

SW CORNER SW 1/4 SEC. 30, T26S, R2E      37TH STREET NORTH      SE CORNER SW 1/4 SEC. 30, T26S, R2E