

DRAINAGE ANALYSIS SUMMARY
REGENCY PARK ADDITION

Area ID**	Area ac	C2	C5	C100	Tc2 min	Tc5 min	Tc100 min	I2" in/hr	I5 in/hr	I100" in/hr	Q2 cfs	Q5 cfs	Q100 cfs	Size ft	Size in	Min Slope %	COMMENTS	
M+L+K	5.05	0.68	0.69	0.80	16	15	15	3.72	4.43	7.37	12.8	15.4	29.8	24	0.6	5 YR		
J	3.32	0.68	0.69	0.80	15	15	15	3.83	4.56	7.37	8.8	10.4	19.6	area inlet			BYPASS	
S+T+U+Z+Y+X+W+V+G+F+H+I+M+L+K+J	63.43	0.51	0.53	0.67	47	46	35	2.02	2.54	5	65.3	85.4	212.5	54	0.6	10 CFS SOCCER, 100 YR G & F, 5 YR ELSEWHERE		
EE	3.11	0.68	0.69	0.80	15	15	15	3.83	4.56	7.37	8.1	9.8	18.3	10	24	0.4	5 YR, BYPASS	
FF	1.25	0.68	0.69	0.80	15	15	15	3.83	4.56	7.37	3.3	3.9	7.4	10	15	0.4	5 YR, BYPASS	
EE+FF	4.36	0.68	0.69	0.80	29	29	25	2.72	3.3	5.9	10.6	13.0	25.7	24	1.0	5 YR		
E	5.73	0.68	0.69	0.80	29	29	25	2.72	3.3	5.9	10.6	13.0	27.0	15'			5 YR, BYPASS	
S+T+U+Z+Y+X+W+V+G+F+H+I+M+L+K+J+EE+FF+E	73.52	0.53	0.55	0.69	48	47	36	2	2.5	4.93	77.9	101.1	250.1	66	3.4	10 CFS SOCCER, 100 YR G & F, 5 YR ELSEWHERE		
D	3.47	0.68	0.69	0.80	19	19	18	3.42	4.1	6.84	8.1	9.8	19.0	10			5 YR BYPASS	
S+T+U+Z+Y+X+W+V+G+F+H+I+M+L+K+J+EE+FF+E+D	76.99	0.54	0.56	0.70	48	47	36	2	2.5	4.93	83.1	107.8	265.7	66	0.4	10 CFS SOCCER, 100 YR G & F, 5 YR ELSEWHERE		
C	5.69	0.68	0.69	0.80	20	19	16	3.33	4	6.53	12.9	15.7	29.7	24			5 YR, OVERFLOW TO SOUTH STORAGE AREA	
T+U+Z+Y+X+W+V+G+F+H+I+M+L+K+J+EE+FF+E+D+	86.28	0.55	0.57	0.71	49	48	37	1.97	2.47	4.86	93.5	121.5	297.7	66	0.4	10 CFS SOCCER, 100 YR G & F, 5 YR ELSEWHERE		
AA	3.67	0.68	0.69	0.80	15	15	15	3.83	4.56	7.37	9.6	11.5	21.6	20	30	0.4	100 YR, SUMP	
GG	0.86	0.68	0.69	0.80	15	15	15	3.83	4.56	7.37	2.2	2.7	5.1	5			100 YR, SUMP	
AA+GG	4.53	0.68	0.69	0.80	16	15	15	3.83	4.56	7.37	11.8	14.3	26.7	36	0.4	100 YR		
BB	0.72	0.68	0.69	0.80	15	15	15	3.83	4.56	7.37	1.9	2.3	4.2	5	15	0.4	100 YR, SUMP	
CC	0.89	0.68	0.69	0.80	15	15	15	3.83	4.56	7.37	2.3	2.8	5.2	5			100 YR, SUMP	
BB+CC	1.61	0.68	0.69	0.80	15	15	15	3.83	4.56	7.37	4.2	5.1	9.5	24	0.4	100 YR		
HH	19.87	0.68	0.69	0.80	21	20	15	3.25	4	7.37	43.9	54.8	117.2	X-ROAD				
BB+CC+HH	21.48	0.68	0.69	0.80	21	20	15	3.25	4	7.37	47.5	60.3	126.6	48	1.0	100 YR		
AA+GG+HH+BB+CC	28.01	0.68	0.69	0.80	21	20	15	3.25	4	7.37	57.5	71.8	153.4	54	1.0	100 YR		
N	2.05	0.68	0.69	0.80	15	15	15	3.83	4.56	7.37	5.3	6.5	12.1	area inlet	18	0.4	5 YR, BYPASS	
O	1.93	0.68	0.69	0.80	15	15	15	3.83	4.56	7.37	5.0	6.1	11.4	area inlet			5 YR, BYPASS	
N+O	3.98	0.68	0.69	0.80	15	15	15	3.83	4.56	7.37	10.4	12.5	23.5	24	0.4	5 YR		
P	1.40	0.68	0.69	0.80	15	15	15	3.83	4.56	7.37	3.6	4.4	8.3	area inlet			100 YR, SUMP	
N+O+P	5.28	0.68	0.69	0.80	15	15	15	3.83	4.56	7.37	13.7	16.6	31.0	36	0.4	100 YR FROM ARREA P, 5 YR ELSEWHERE		
Q	1.87	0.68	0.69	0.80	16	16	15	3.72	4.43	7.37	4.7	5.7	11.0	X-ROAD				

199606104DRAINAGE.WK4

2

Mid-Kansas Engineering Consultants, Inc.

DRAINAGE ANALYSIS SUMMARY
REGENCY PARK ADDITION

Area ID**	Area ac	C2	C5	C100	Tc2 min	Tc5 min	Tc100 min	I2" in/hr	I5 in/hr	I100" in/hr	Q2 cfs	Q5 cfs	Q100 cfs	Size ft	Size in	Min Slope %	COMMENTS
A	1.11	0.68	0.69	0.80	15	15	15	3.83	4.56	7.37	2.9	3.5	6.5	10'	18	0.4	100 YR, SUMP
B	2.14	0.68	0.69	0.80	15	15	15	3.83	4.56	7.37	5.6	6.7	12.6	10'	24	0.4	100 YR, SUMP
S	10.39	0.33	0.35	0.55	31	30	22	2.62	3.24	6.26	9.0	11.8	35.8	area inlet	15	0.4	MINIMUM PIPE SIZES DUE TO STORAGE ON SOCCER FIELDS
T	8.20	0.33	0.35	0.55	35	34	25	2.44	3.01	5.9	6.6	8.6	26.6	area inlet			
S+T	18.59	0.33	0.35	0.55	35	34	25	2.44	3.01	5.9	15.0	19.6	60.3	15	0.4	MINIMUM PIPE SIZES DUE TO STORAGE ON SOCCER FIELDS	
U	9.50	0.33	0.35	0.55	42	41	30	2.18	2.72	5.4	6.8	9.0	28.2	area inlet			
S+T+U	28.09	0.33	0.35	0.55	42	41	30	2.18	2.72	5.4	20.2	26.7	83.4	15	0.4	MINIMUM PIPE SIZES DUE TO STORAGE ON SOCCER FIELDS	
Z	0.00	0.47	0.49	0.65	18	17	15	3.51	4.31	7.37	0.0	0.0	0.0	area inlet	15	0.4	MINIMUM PIPE SIZES DUE TO STORAGE ON SOCCER FIELDS
Y	0.00	0.47	0.49	0.65	19	18	15	3.42	4.2	7.37	0.0	0.0	0.0	area inlet			
Z+Y	0.00	0.47	0.49	0.65	19	18	15	3.42	4.2	7.37	0.0	0.0	0.0	15	0.4	MINIMUM PIPE SIZES DUE TO STORAGE ON SOCCER FIELDS	
X	0.00	0.47	0.49	0.65	19	18	15	3.42	4.2	7.37	0.0	0.0	0.0	area inlet			
Z+Y+X	0.00	0.47	0.49	0.65	19	18	15	3.42	4.2	7.37	0.0	0.0	0.0	15	0.4	MINIMUM PIPE SIZES DUE TO STORAGE ON SOCCER FIELDS	
W	0.00	0.68	0.69	0.80	15	15	15	3.83	4.56	7.37	0.0	0.0	0.0	area inlet			
Z+Y+X+W	0.00	0.51	0.53	0.68	21	20	15	3.25	4	7.37	0.0	0.0	0.0	15	0.4	MINIMUM PIPE SIZES DUE TO STORAGE ON SOCCER FIELDS	
V	4.80	0.45	0.47	0.64	20	19	15	3.53	4.1	7.37	7.2	9.2	22.6	area inlet			
S+T+U+Z+Y+X+W+V	32.89	0.38	0.40	0.58	42	41	30	2.18	2.72	5.4	27.2	35.8	103.0	15	0.4	THROTTLED TO 10 CFS	
G	12.90	0.68	0.69	0.80	21	21	18	3.25	4.1	7.37	28.5	36.5	76.1	30'			100 YR, SUMP
S+T+U+Z+Y+X+W+V+G	45.79	0.44	0.46	0.62	45	44	33	2.08	2.61	5.14	41.9	55.0	145.9	42	0.8	100 YR FROM AREA D - 10 CFS FROM SOCCER FIELDS	
F	5.87	0.68	0.69	0.80	21	19	15	3.25	4.1	7.37	11.1	13.9	34.6	30'			100 YR, SUMP
S+T+U+Z+Y+X+W+V+G+F	51.66	0.46	0.50	0.73	28	27	25	2.70	3.43	6.9	77.2	105.9	222.5	48	0.8	100 YR FROM AREA G AND F + 10 CFS FROM SOCCER	
H	1.52	0.68	0.69	0.80	15	15	15	3.83	4.56	7.37	4.0	4.8	9.0	area inlet	15	1	5 YR, BYPASS
I	1.88	0.68	0.69	0.80	15	15	15	3.83	4.56	7.37	4.9	5.9	11.1	area inlet			BYPASS
H+I	3.40	0.68	0.69	0.80	15	15	15	3.83	4.56	7.37	8.9	10.7	20.0	24	0.4	5 YR	
M	2.15	0.68	0.69	0.80	17	17	15	3.61	4.31	7.37	5.3	6.4	12.7	area inlet	18	0.5	5 YR
L	0.72	0.68	0.69	0.80	15	15	15	3.83	4.56	7.37	1.9	2.3	4.2	area inlet			BYPASS
M+L	2.87	0.68	0.69	0.80	15	15	15	3.83	4.56	7.37	7.5	9.0	16.9	24	0.6	5 YR	
K	2.18	0.68	0.69	0.80	16	16	15	3.72	4.43	7.37	5.5	6.7	12.9	area inlet			BYPASS

199606104DRAINAGE.WK4

1

Mid-Kansas Engineering Consultants, Inc.

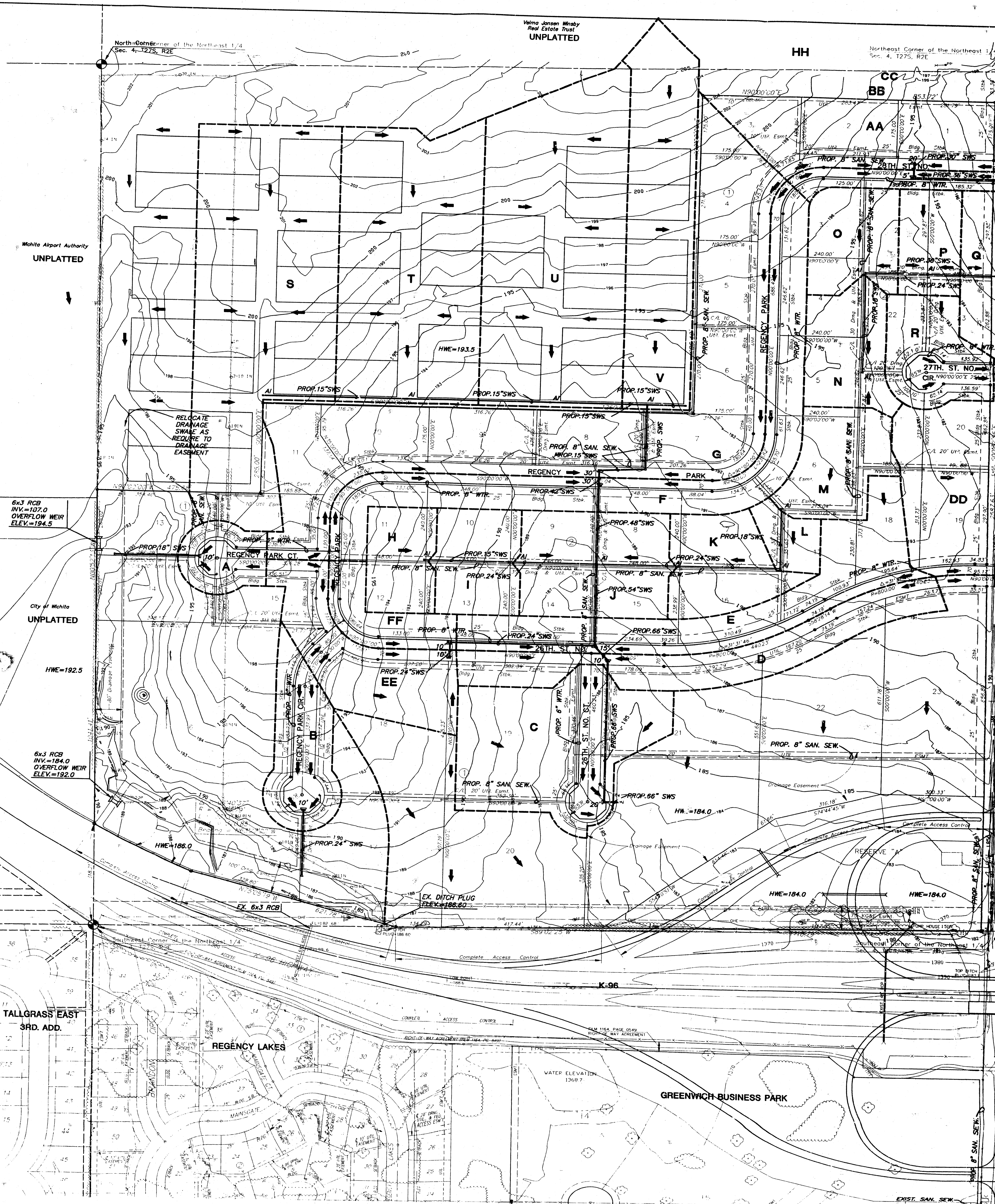
DRAINAGE ANALYSIS SUMMARY
REGENCY PARK ADDITION

Area ID**	Area ac	C2	C5	C100	Tc2 min	Tc5 min	Tc100 min	I2" in/hr	I5 in/hr	I100" in/hr	Q2 cfs	Q5 cfs	Q100 cfs	Size ft	Size in	Min Slope %	COMMENTS
R	2.02	0.68	0.69	0.80	15	15	15	3.83	4.56	7.37	5.3	6.4	11.9				
N+O+P+Q+R+AA+GG+HH+BB+CC	35.16	0.68	0.69	0.80	28	27	22	2.78	2.43	6.26	66.5	83.2	176.1	54	1	100 YR	
DO	3.97	0.68	0.69	0.80	21	20	17	3.25	4	7	8.8	11.0	22.2				

199606104DRAINAGE.WK4

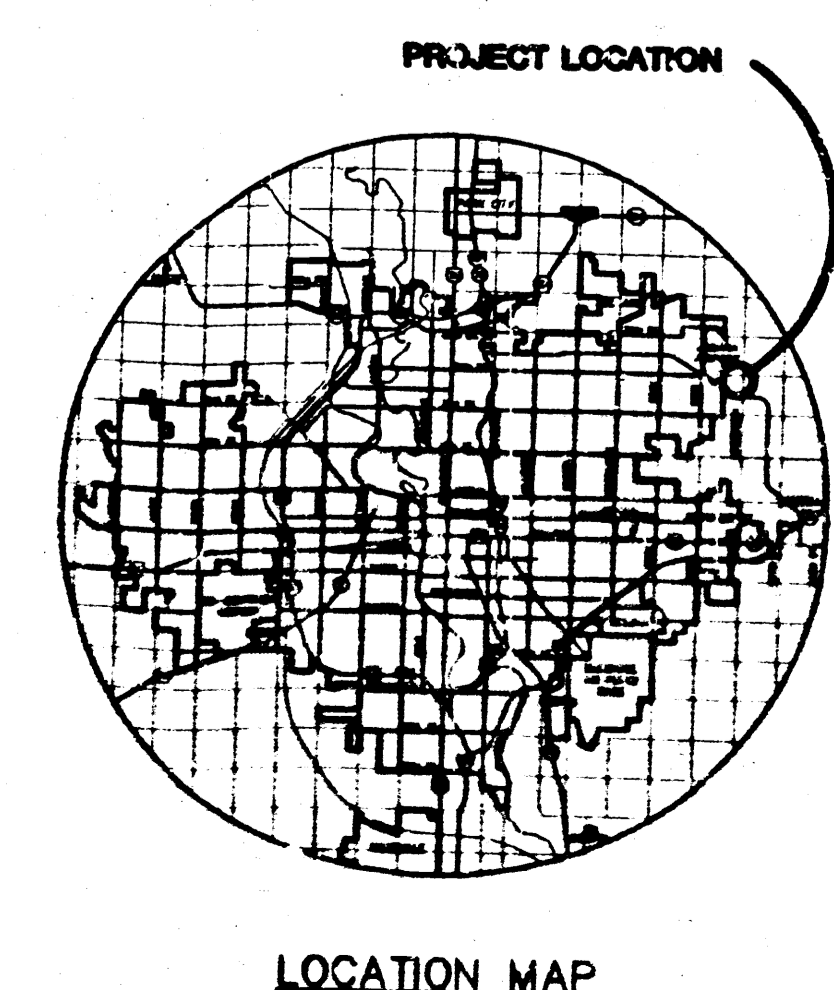
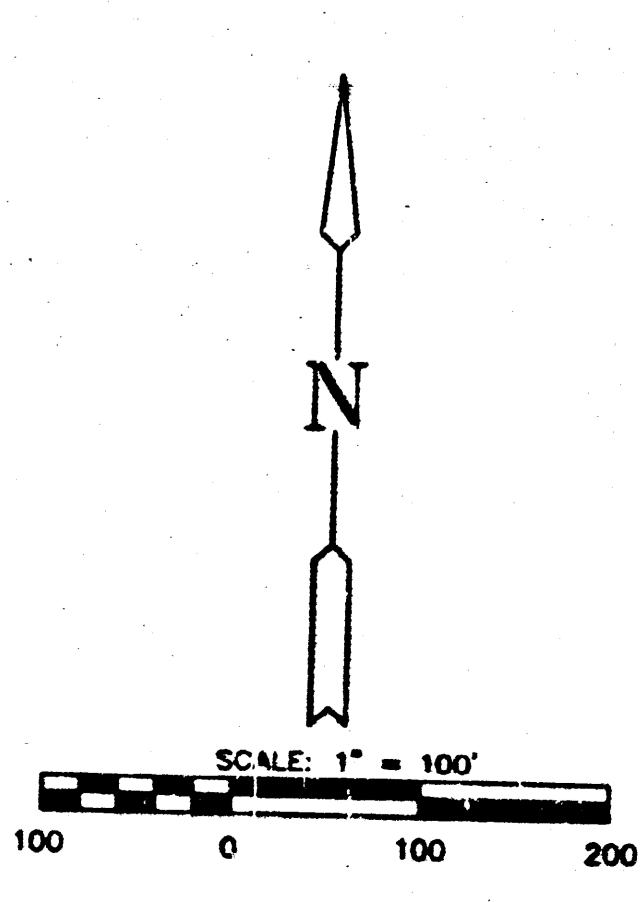
3

Mid-Kansas Engineering Consultants, Inc.



BENCHMARKS
 BM#1 BM Step Spike in West side PP, 1st. pole North of 29th. St. on East side Greenwich Rd. Elev.=201.51
 BM#2 BM Step Spike in West side PP, 6th. pole North of K-96 on East side Greenwich Rd. Elev.=192.04
 BM#3 BM Step Spike in West side PP, 1st. pole North of K-96 on East side Greenwich Rd. Elev.=184.45

PREPARED FEB. 1997
 SURVEYED JAN. 1997
 BY MKEC
 EXISTING USE - AGRICULTURAL
 EXISTING ZONING - SF-20
 PROPOSED ZONING - LI
 MINIMUM PADS AS INDICATED ON DRAINAGE PLAN.
 OWNER/DEVELOPER:
 RITCHIE ASSOCIATES, INC.
 8100 E. 22ND. ST., BLDG 1000
 WICHITA, KANSAS 67226

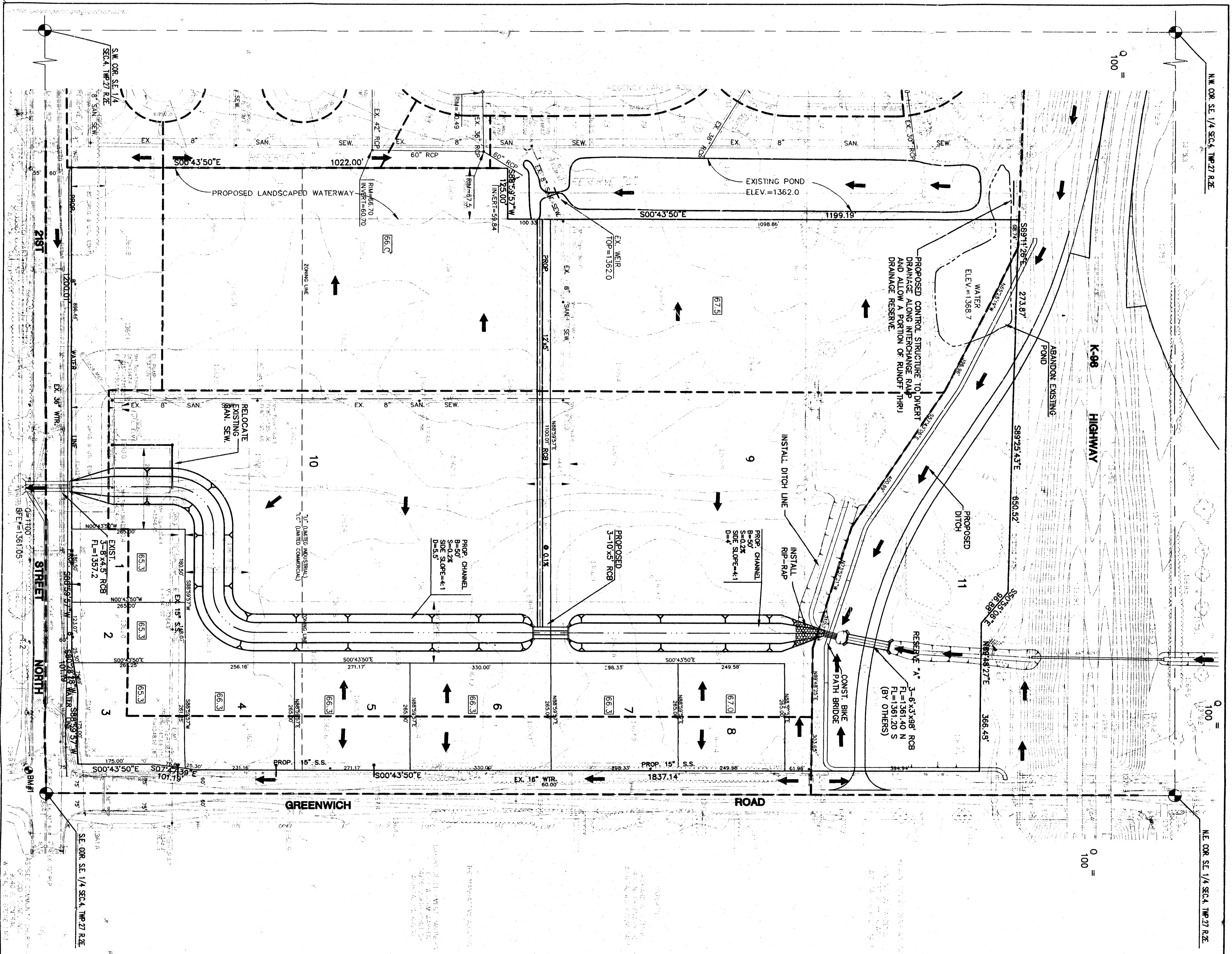


Note: Each lot shall be responsible for Detention of the 100 year-2 hour storm.

Lot	Block	Min. Pad Elev. (Dry Datum)	Min. Pad Elev. (USGS Datum)
5	1	188.0	1383.4
6	1	184.5	1381.9
7	1	182.0	1379.4
8	1	182.5	1379.9
9	1	182.5	1379.9
10	1	183.0	1380.4
11	1	184.0	1381.4
12	1	185.0	1382.4
13	1	186.0	1383.4
14	1	186.5	1383.9
15	1	187.0	1384.4
16	1	187.5	1384.9
17	1	188.0	1385.4
18	1	188.5	1385.9
19	1	189.0	1386.4
20	1	189.5	1386.9
21	1	190.0	1387.4
22	1	190.5	1387.9
23	1	191.0	1388.4

REGENCY PARK ADDITION
 PROJECT NAME
DRAINAGE AND UTILITY PLAN
 DESIGN TITLE
 CJA/TRM/PAF
 DESIGN
 CJA/TRM/PAF
 DESIGN
 CHECKED BY: PAF
 DATE: MAR. 1997
 8104DPLN 1 / 1
 JOB NO. 1187107

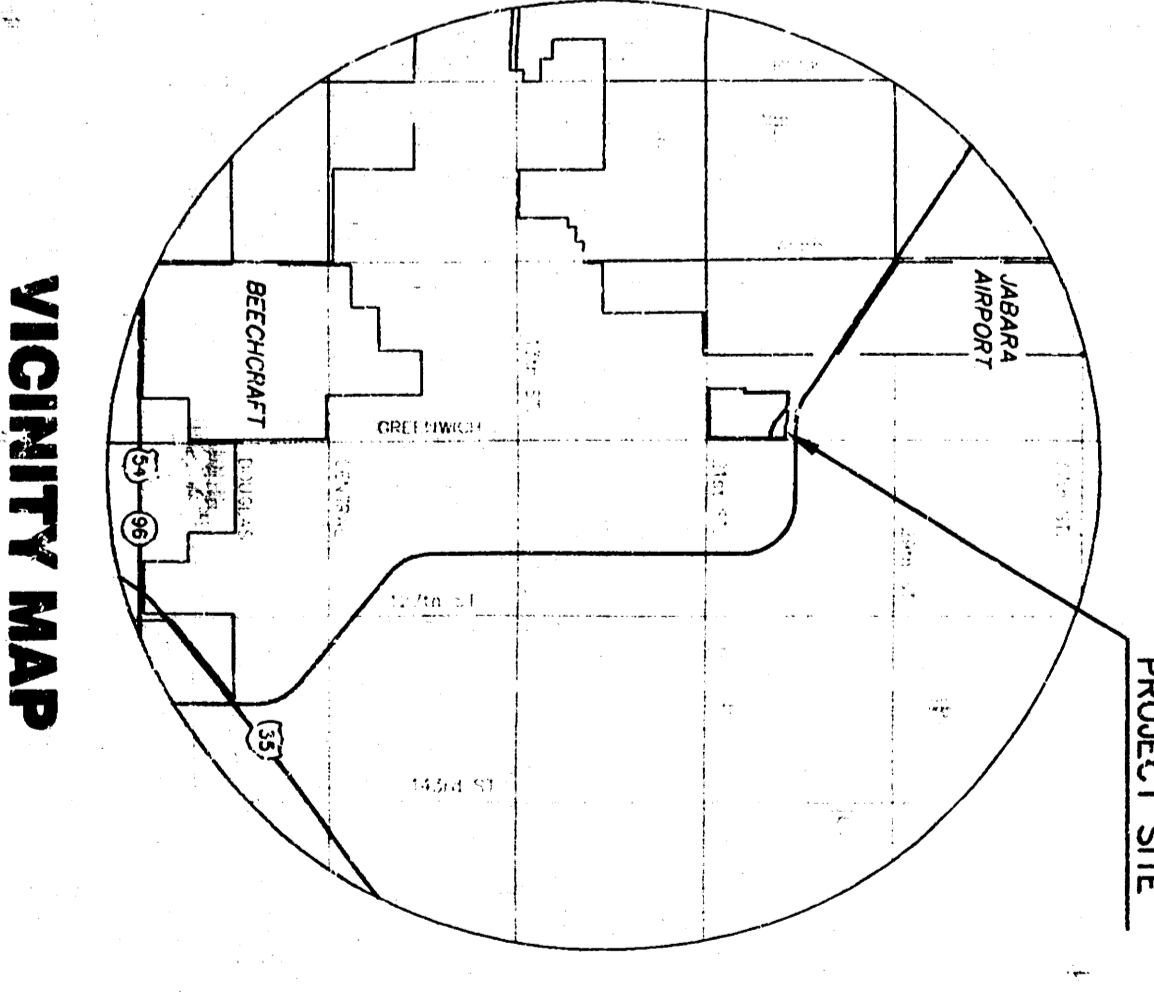
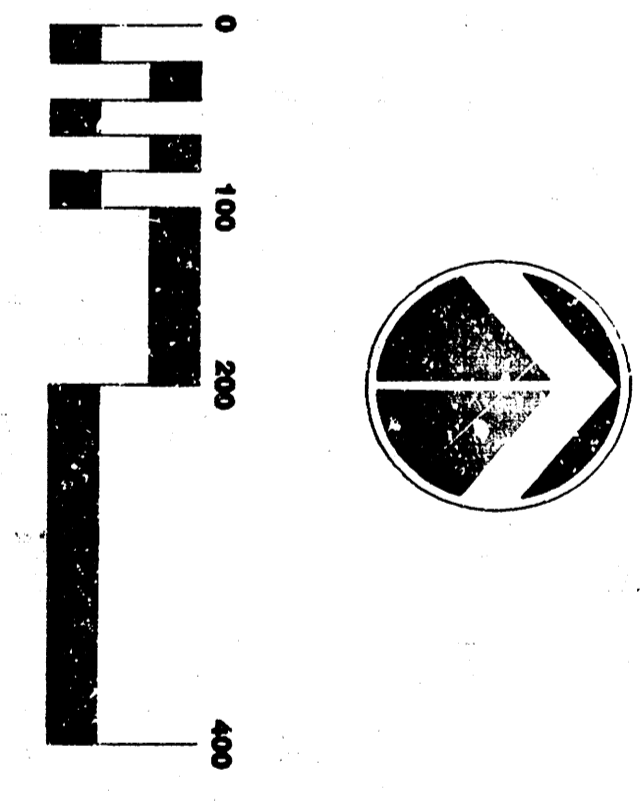
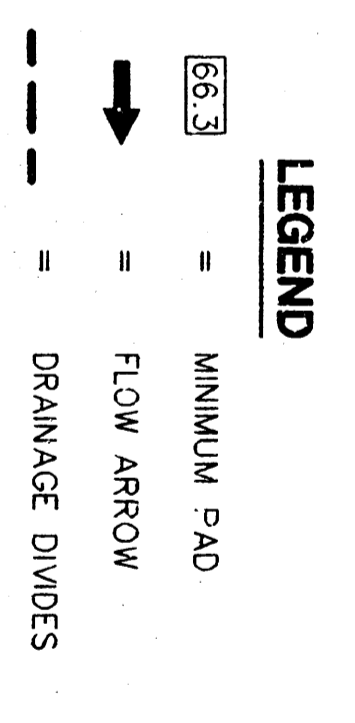
 MID-KANSAS ENGINEERS & CONSULTANTS, INC.
 444 S. W. 10TH AVE.
 WICHITA, KANS. 67202
 316-884-8800



- NOTES**
1. ZONING - LIMITED INDUSTRIAL - LI
 2. LOT MINIMUM PADS AS INDICATED ON DRAINAGE PLAN.
 3. RESERVE A IS FOR HIGHWAY LANDSCAPING OPEN SPACE DEDICATED TO THE PUBLIC.

BENCHMARK

BM#1
 GREENWICH AND 21ST ST. N. COR. 41' SOUTH AND 58' WEST OF
 IRON COR. LINE BOTH 17.0' SW OF ASPHALT 14.2' EAST OF
 FACE P.P. 17.0' WEST OF FACE P.P.
 ELEV. = 173.98



DRAINAGE & UTILITY PLAN

REGENCY LAKES COMMERCIAL

OWNERS: REGENCY LAKES L.C. % RITCHE DEVELOPMENT 8100 E. 22ND ST. NORTH, BLDG. 1000 WICHITA, KS. 67226 684-7300 DEVELOPER: GREENWICH 21 LLC % GEORGE LAHAM 150 N. MARKET WICHITA, KANSAS 67201 262-6400

