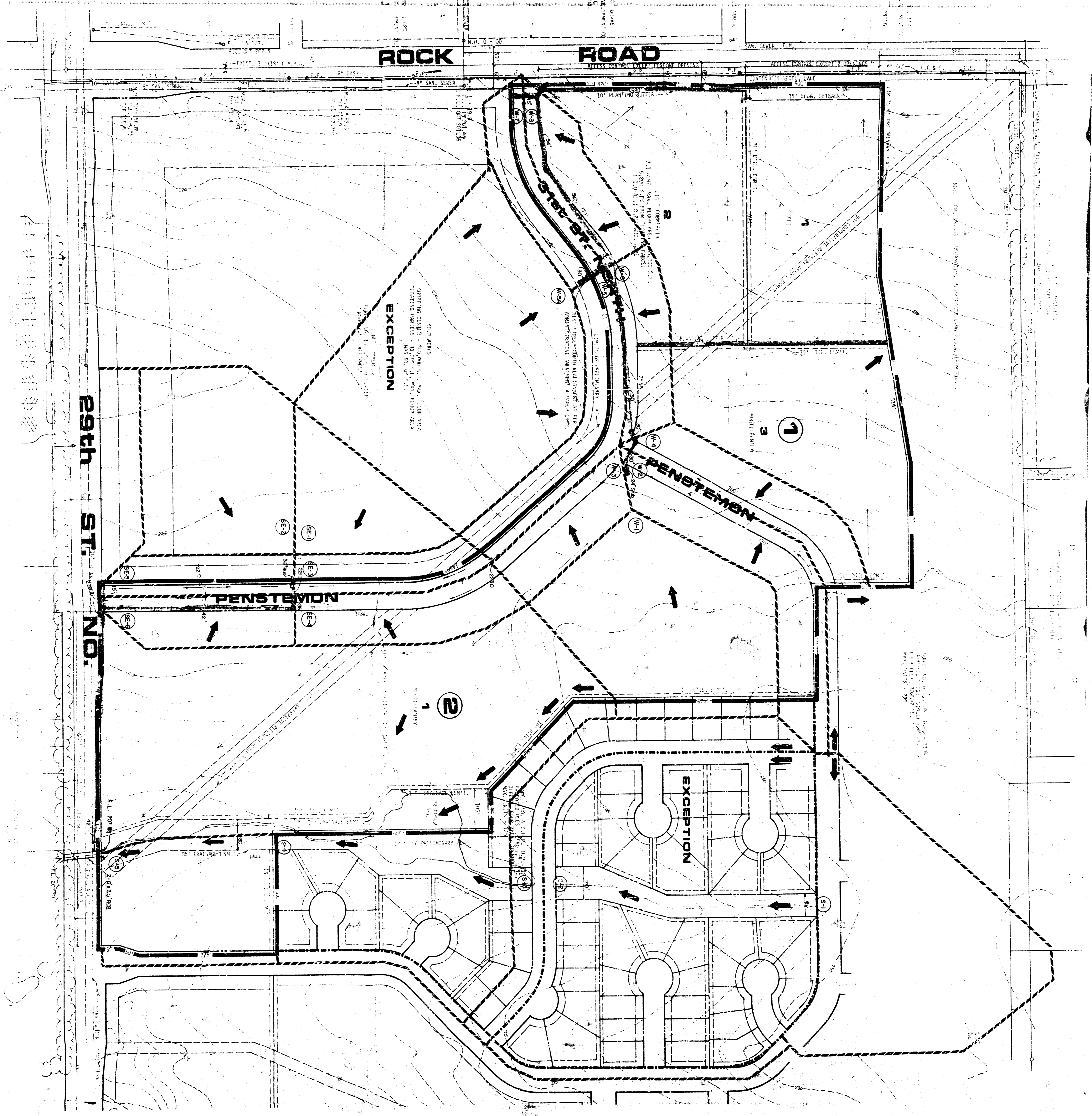
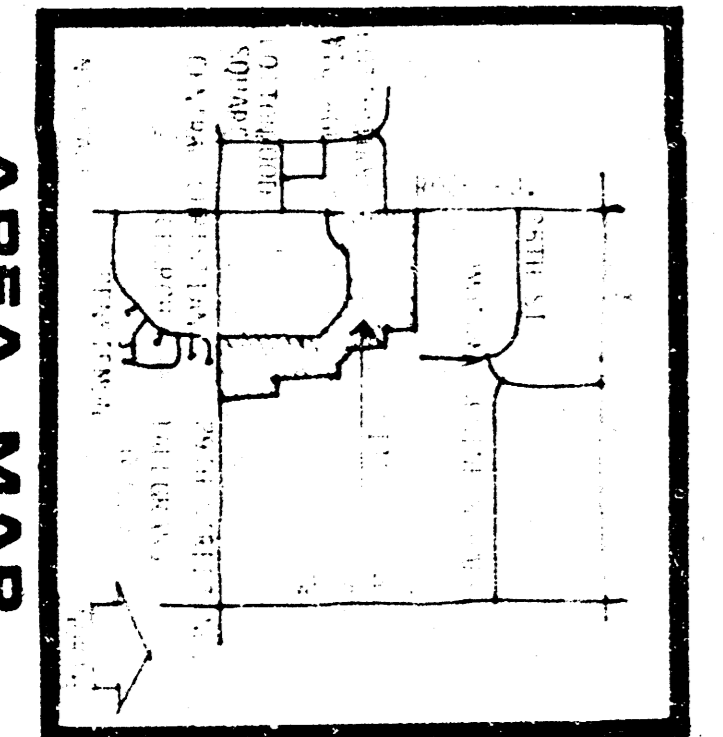


THE RENAISSANCE

ORIGINAL DRAINAGE PLAN FOR



Station	Area	Flow	C	T _e	T _s	Time	Q _e	Q ₁₀₀	ST LIND. THE SITE / SLOPE	UNIT	COMMENT
SE 1	24	0.8	15	400	818	78	172	16			OP-STRUC
SE 2	43	0.7	1			152	285	16			OP-STRUC
SE 3	13	8.5	0.7	1		27	28	0.16			COLLECTOR
SE 4	20	0.7	15	450	878	57	126	0.12	1.00 0.8%	4	15' dia.
SE 5	13	0.5	0.7	15		37	72.5	0.2	4.70 0.8%	4	15' dia.
SE 6	16	0.7	10	400	809	37	62	0.2		4	
SE 7	134	0.7	10	200	870	45	91	0.2	4.2 0.8%	4	
SE 8	4.3	0.7	15	400	898	119	59.6	0.12	2.16 0.8%	12	OP-STRUC
SE 9	14	0.7	15			40	13.5	0.12		8	
SE 10	103	0.7	15			30.7	6.73	0.12	20' 8 0.8%	10	
SE 11	129	0.7	15			34.0	8.11	0.12	20' 8 0.8%	10	
SE 12	110	0.3	20	500	803	31.9	70.7	0.12	20' 0 0.4%	10	
SE 13	15	0.7	15	400	898	43	94	0.12		10	
SE 14	284	0.7	15	400	898	43	94	0.12	5.19 0.4%	4	
SE 15	14	0.7	15	400	898	40	80	0.12		6	
SE 16	16	0.8	15	400	898	45	101	0.12		6	
SE 17	84	0.8	15	400	898	113	42.4	0.12		6	
SE 18	88	0.8	15	400	898	119	215	0.12		6	
SE 19	80	0.8	15	400	898	113	41.7	0.12		6	
SE 20	151	0.8	20	400	802	185	325	0.12		6	
SE 21	222	0.6	27			82.8	62.8				15' dia.
SE 22	64	0.6	27			71.4	46.5				15' dia.
SE 23	67	0.6	27			71.4	46.5				15' dia.
SE 24	185	0.7	35			445	179.2				15' dia.
SE 25	185	0.7	35			445	179.2				15' dia.



THE RENAISSANCE
(Continued)