

BENCHMARK:
CITY BSC AT THE SW CORNER OF R.C.B.C. FOR
BIG SLUSH AT RIDGE ROAD
ELEV = 144.22 CITY DATUM
(1331.62 NGVD)

LAKE
STAIRS W.S. ELEV. = 132.6
100-YR W.S. ELEV. = 138.4

SCALE: 1" = 60'
• = Iron

EXISTING LAKE
STAIRS W.S. ELEV. = 132.6
100-YR W.S. ELEV. = 138.4

NOTES:

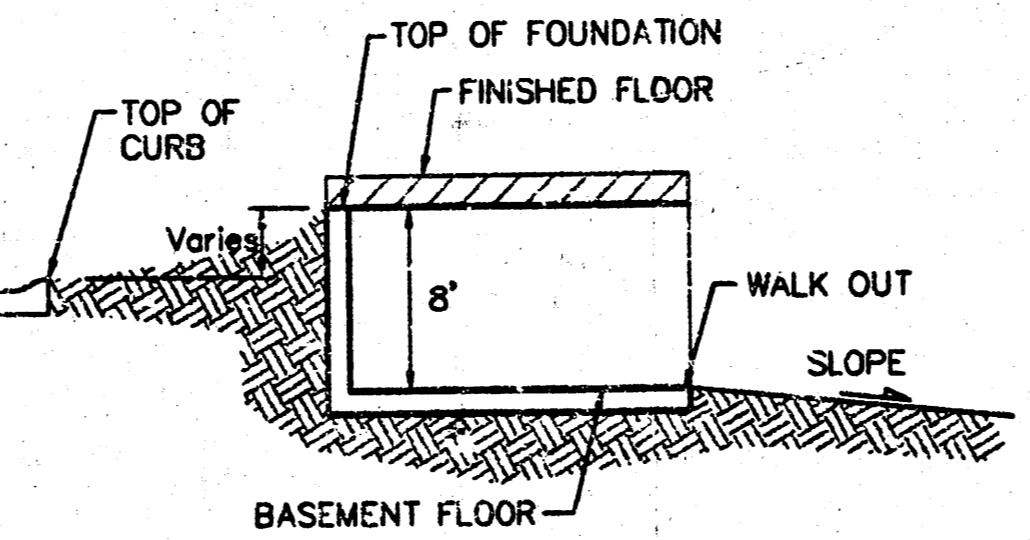
Proposed Top of Foundation Elevations Are Shown On Plans. Contractor to Set Finished Floor Elevations.

All Street Elevations Shown on Plans Are for Top of Curb (Full-Height).

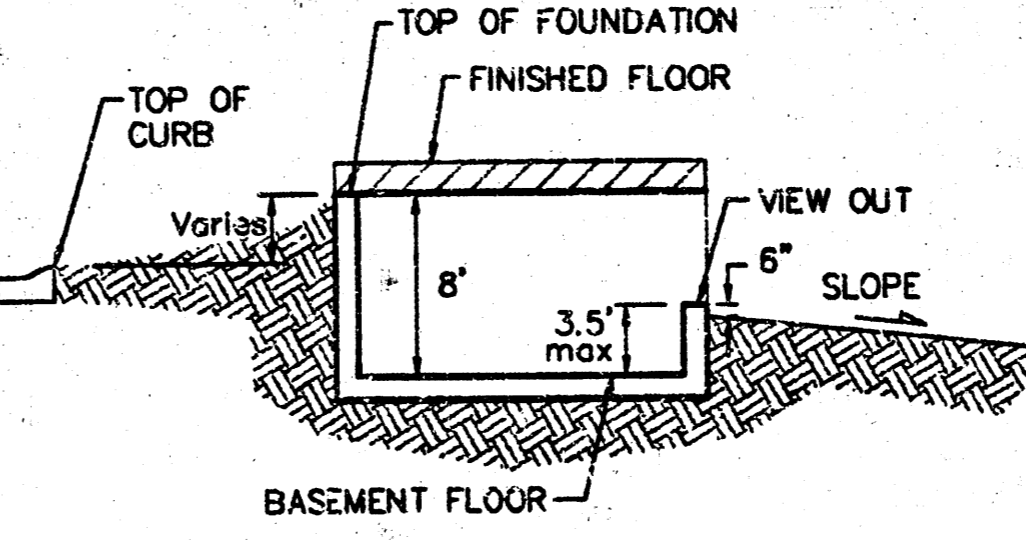
This Grading Plan is Designed with View-Out & Walk Basements. Elevations Shown at Rear of House (XX.X V.O. or XX.X W.O.) Are for Minimum Opening.

* Denotes Extra-Deep Foundation May be Required to Reach Existing Grade.

MINIMUM BUILDING PAD ELEVATIONS FOR LOWEST OPENING TO THE STRUCTURES		
LOT	BLOCK	ELEVATION
17-23	B	140.8
1-7	C	140.6
15-19, 20-24	D	140.5
1-5, 7-9, 11-16, 21	E	140.5
1-7	F	139.8
1-7	G	138.8



TYPICAL WALK OUT
NO SCALE



TYPICAL VIEW OUT
NO SCALE

**APPROVED
DRAINAGE PLAN**

**RIDGE PORT NORTH 3RD ADDITION
GRADING PLAN
WICHITA, KANSAS**

BAUGHMAN COMPANY P.A.
ENGINEERING, SURVEYING, & PLANNING
316-282-7271 • 315 ELLIS • WICHITA, KANSAS 67211

PROJECT NUMBER: _____

DESIGN	DRAWN	APPROVED	DATE	SCALE	SHEET
NEW	B/C		02/05/01	1"=60'	1

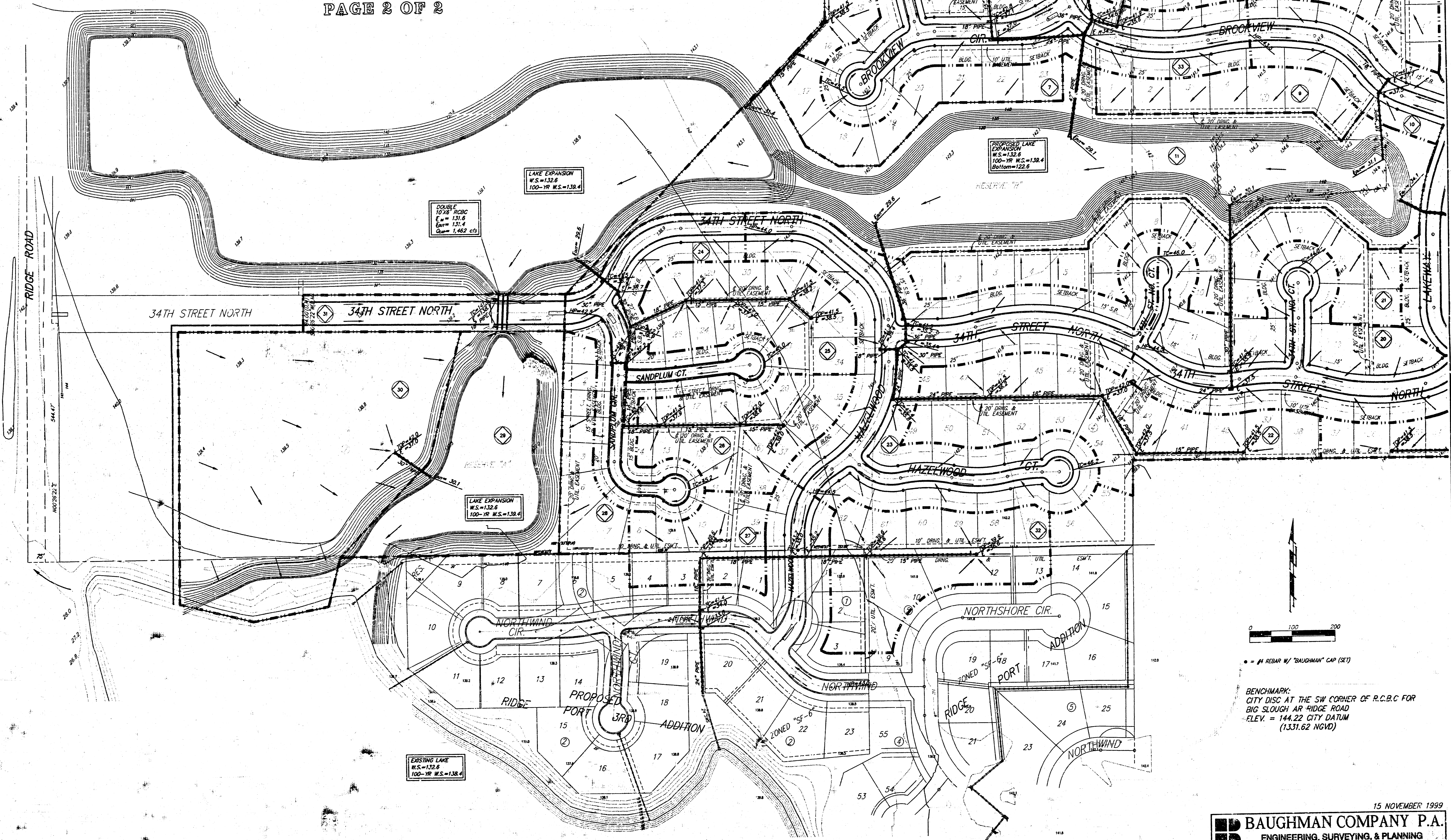
PLAT CADD MARKING!

DRAINAGE PLAN

RIDGE PORT NORTH 3RD ADDITION

WICHITA, SEDGWICK COUNTY, KANSAS

PAGE 2 OF 2



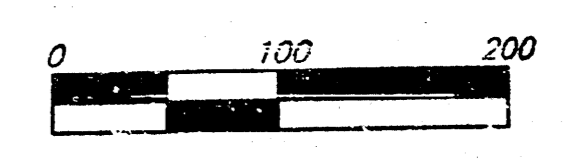
DOUBLE
10" R.C.B.C.
E = 131.6
B = 131.4
Q = 1,462 cfs

LAKE EXPANSION
W.S. = 132.6
100-YR W.S. = 138.4

PROPOSED LAKE
EXPANSION
W.S. = 132.6
100-YR W.S. = 138.4
Bottom = 122.6

LAKE EXPANSION
W.S. = 132.6
100-YR W.S. = 138.4

EXISTING LAKE
W.S. = 132.6
100-YR W.S. = 138.4



• = #4 REBAR W/ "BAUGHMAN" CAP (SET)

BENCHMARK:
CITY DISC AT THE SW CORNER OF R.C.B.C FOR
BIG SLOUGH AND RIDGE ROAD
ELEV. = 144.22 CITY DATUM
(1331.62 NGVD)

15 NOVEMBER 1999

BAUGHMAN COMPANY P.A.
ENGINEERING, SURVEYING, & PLANNING
316-232-7271 • 315 ELLIS • WICHITA, KANSAS 67211
F:\HYDRO\DRPLAN\RIDGEPORT.DWG-SC2