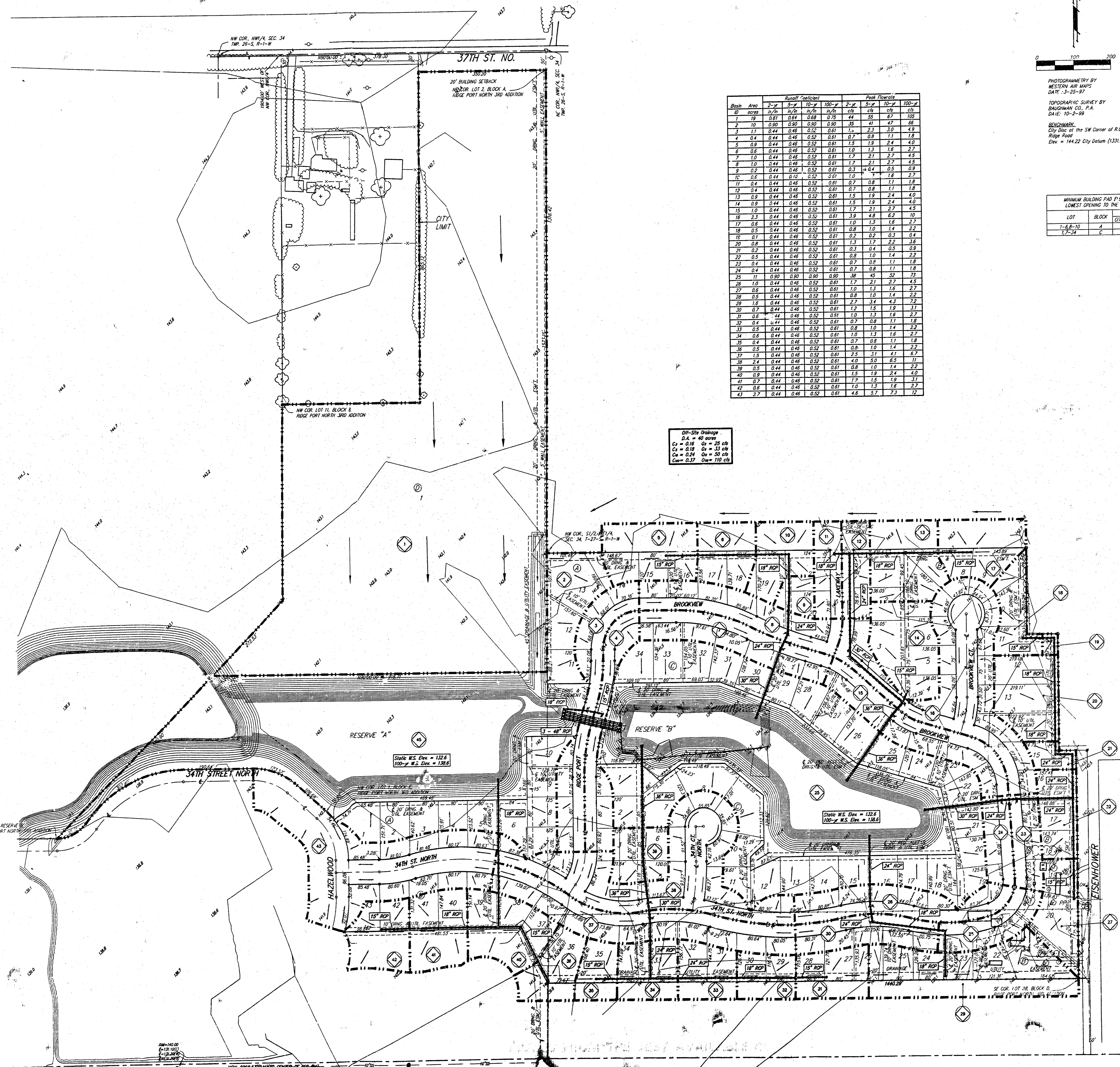


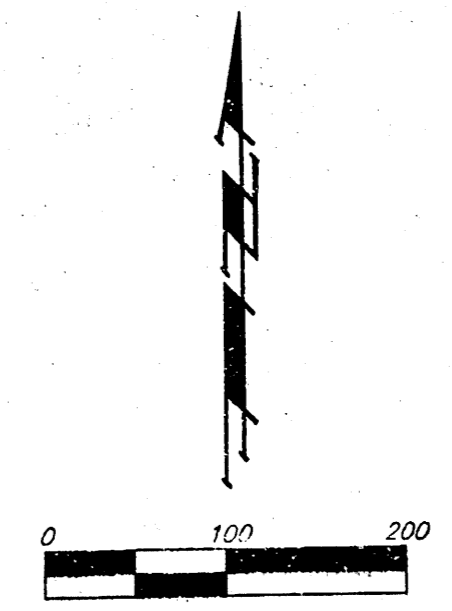
DRAINAGE PLAN

RIDGE PORT NORTH 4TH ADDITION

WICHITA, SEDGWICK COUNTY, KANSAS



Block	Area	Runoff Coefficient			Peak Flowrate		
		2-yr	5-yr	100-yr	2-yr	5-yr	100-yr
1	0.25	0.81	0.84	0.88	0.25	0.28	0.33
2	1.0	0.80	0.80	0.80	0.80	0.80	0.80
3	1.1	0.44	0.48	0.52	0.81	1.3	2.1
4	0.4	0.44	0.48	0.52	0.81	0.7	1.1
5	0.9	0.44	0.48	0.52	0.81	1.3	2.1
6	0.6	0.44	0.48	0.52	0.81	1.0	1.7
7	1.0	0.44	0.48	0.52	0.81	1.7	2.7
8	1.0	0.44	0.48	0.52	0.81	1.7	2.7
9	0.2	0.44	0.48	0.52	0.81	0.3	0.5
10	0.6	0.44	0.48	0.52	0.81	1.0	1.7
11	0.4	0.44	0.48	0.52	0.81	0.7	1.1
12	0.4	0.44	0.48	0.52	0.81	0.7	1.1
13	0.9	0.44	0.48	0.52	0.81	1.3	2.1
14	0.9	0.44	0.48	0.52	0.81	1.3	2.1
15	1.0	0.44	0.48	0.52	0.81	1.7	2.7
16	2.3	0.44	0.48	0.52	0.81	3.0	4.8
17	0.6	0.44	0.48	0.52	0.81	1.0	1.7
18	0.5	0.44	0.48	0.52	0.81	0.8	1.3
19	0.1	0.44	0.48	0.52	0.81	0.2	0.3
20	0.8	0.44	0.48	0.52	0.81	1.3	2.1
21	0.2	0.44	0.48	0.52	0.81	0.3	0.5
22	0.5	0.44	0.48	0.52	0.81	0.8	1.3
23	0.4	0.44	0.48	0.52	0.81	0.7	1.1
24	0.4	0.44	0.48	0.52	0.81	0.7	1.1
25	1.1	0.90	0.90	0.90	0.90	0.90	0.90
26	1.0	0.44	0.48	0.52	0.81	1.7	2.7
27	0.6	0.44	0.48	0.52	0.81	1.0	1.7
28	0.5	0.44	0.48	0.52	0.81	0.8	1.3
29	1.6	0.44	0.48	0.52	0.81	2.7	4.3
30	0.7	0.44	0.48	0.52	0.81	1.2	1.9
31	0.6	0.44	0.48	0.52	0.81	1.0	1.7
32	0.4	0.44	0.48	0.52	0.81	0.7	1.1
33	0.5	0.44	0.48	0.52	0.81	0.8	1.3
34	0.6	0.44	0.48	0.52	0.81	1.0	1.7
35	0.4	0.44	0.48	0.52	0.81	0.7	1.1
36	0.5	0.44	0.48	0.52	0.81	0.8	1.3
37	1.5	0.44	0.48	0.52	0.81	2.5	4.1
38	2.4	0.44	0.48	0.52	0.81	4.0	6.5
39	1.5	0.44	0.48	0.52	0.81	2.5	4.1
40	0.9	0.44	0.48	0.52	0.81	1.5	2.4
41	0.7	0.44	0.48	0.52	0.81	1.2	1.9
42	0.6	0.44	0.48	0.52	0.81	1.0	1.7
43	2.7	0.44	0.48	0.52	0.81	4.6	7.3

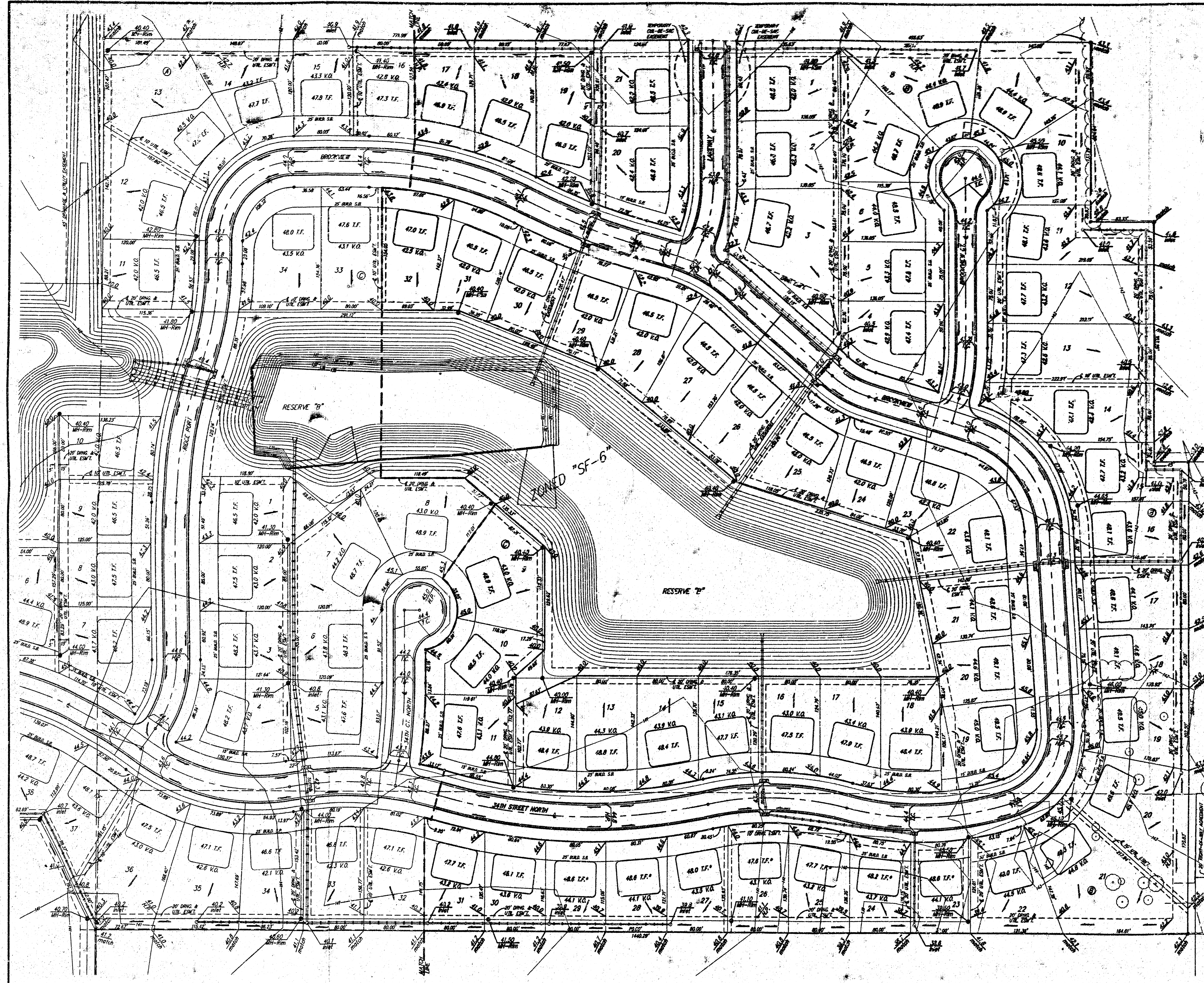


PHOTOGRAMMETRY BY
WESTERN AIR MAPS
DATE: 3-25-97
TOPOGRAPHIC SURVEY BY
BRADSHAW CO., P.A.
DATE: 10-2-99
BOUNDARY:
City Line of the SW Corner of R.C.B.C. for Big Spring #1
Ridge Road
Elev = 144.22 City Datum (1331.62 NGVD)

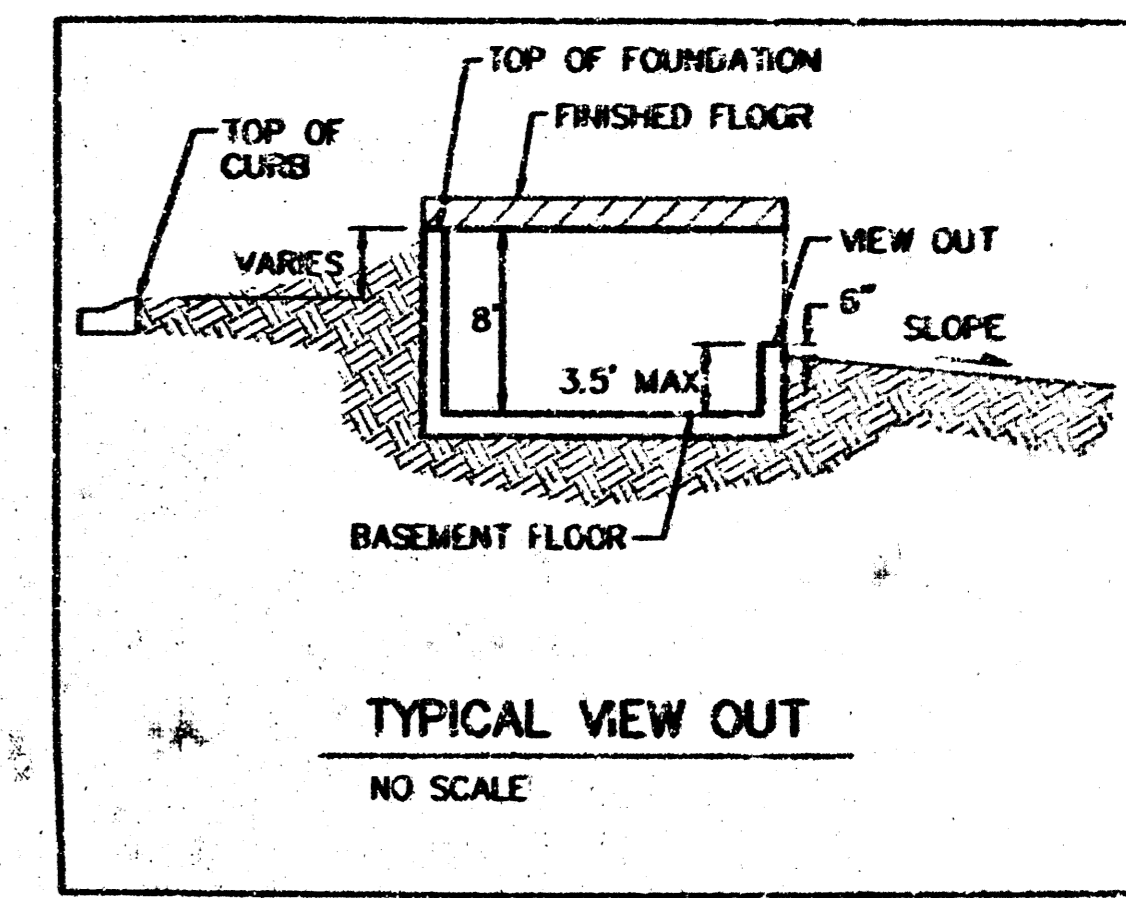
MINIMUM BUILDING PAD ELEVATIONS FOR LOWEST OPENING TO THE STRUCTURES

LOT	BLOCK	CITY DATUM	ELEVATION	NGVD
1-68-10	A	140.6	139.0	
7-34	C	140.8	139.0	

Off-Site Drainage
C_s = 0.15 C_s = 25 cfs
C_s = 0.30 C_s = 50 cfs
C_s = 0.37 C_s = 110 cfs



SCALE: 1" = 60'
 • = 100'



NOTE:
 Proposed top of foundation elevations are shown on plans. Contractor to set finish floor elevation.
 All street elevations shown on plans are for top of curb (full height).
 View-out elevations are denoted as XXX V.O.
 Additional fill or deep footings may be required for pad elevations denoted with an asterisk (*)

GENERAL:
 City Use at the SW Corner of R.C.B.C. for Big Slough RR
 Ridge Road
 Elev = 144.27 City Datum (1331.62 NGVD)

NOTE:
 A master grading plan for drainage has been developed for this subdivision and is on file with the City of Wichita, Kansas. All drainage easements, rights-of-way, or reserves shall remain at established grades or as modified with the approval of the city engineer of the City of Wichita, Kansas. No obstructions which impede the flow of this drainage system shall be allowed.

**FRIDGE PORT NORTH 4TH ADDITION
 GRADING PLAN
 WICHITA, KANSAS**

BAUGHMAN COMPANY P.A.
 ENGINEERING, SURVEYING, & PLANNING
 318-282-2271 • 318 ELLIOTT • WICHITA, KANSAS 67211

PROJECT NUMBER: _____ SHEET: **2** OF **8**

DESIGN	DRAWN	APPROVED	DATE	SCALE
	BLG		3/12/2001	NOTED

L:\PROJECTS\147\GRADING