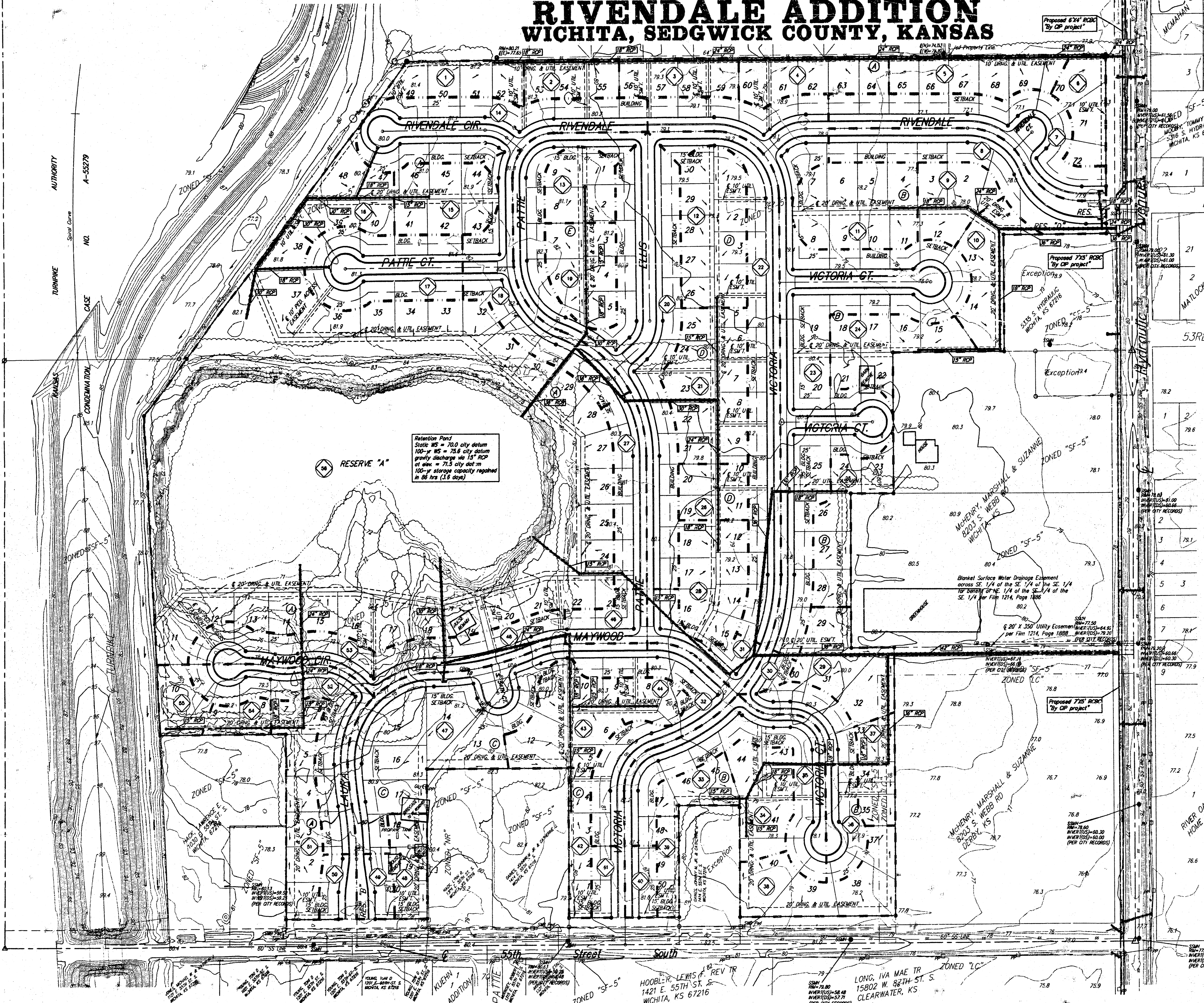
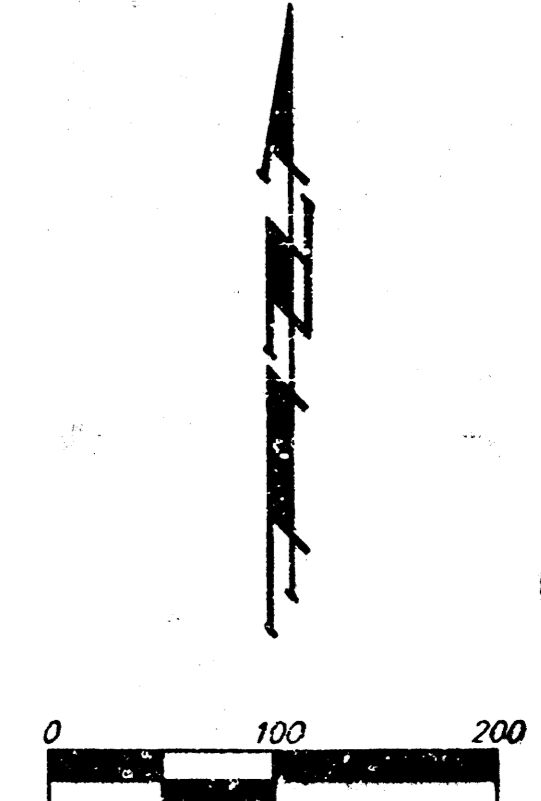


DRAINAGE PLAN RIVENDALE ADDITION WICHITA, SEDGWICK COUNTY, KANSAS



Basin ID	Area acres	C2	C5	C10	C20	C50	C100
1	0.6	0.48	0.53	0.74	1.1	1.5	3.3
2	0.4	0.48	0.53	0.74	0.7	1.0	2.2
3	0.5	0.48	0.53	0.74	0.9	1.2	2.7
4	0.7	0.48	0.53	0.74	1.3	1.7	3.8
5	0.8	0.48	0.53	0.74	1.5	1.9	4.4
6	0.5	0.48	0.53	0.74	0.8	1.2	2.7
7	1.5	0.48	0.53	0.74	2.0	3.6	8.2
8	1.3	0.48	0.53	0.74	2.4	3.1	7.1
9	0.6	0.48	0.53	0.74	1.1	1.5	3.3
10	0.7	0.48	0.53	0.74	1.3	1.7	3.8
11	1.2	0.48	0.53	0.74	2.2	2.9	6.5
12	1.2	0.48	0.53	0.74	2.2	2.9	6.5
13	0.6	0.48	0.53	0.74	1.1	1.5	3.3
14	1.8	0.48	0.53	0.74	3.3	4.4	9.8
15	0.8	0.48	0.53	0.74	1.5	1.9	4.4
16	0.8	0.48	0.53	0.74	1.5	1.9	4.4
17	1.3	0.48	0.53	0.74	2.4	3.1	7.1
18	1.2	0.48	0.53	0.74	2.2	2.9	6.5
19	0.8	0.48	0.53	0.74	1.5	1.9	4.4
20	3.7	0.48	0.53	0.74	6.6	8.9	20
21	1.4	0.48	0.53	0.74	2.6	3.4	7.8
22	2.2	0.48	0.53	0.74	4.0	5.3	12
23	5.0	0.48	0.53	0.74	9.2	12	27
24	0.9	0.48	0.53	0.74	1.7	2.2	4.9
25	0.8	0.48	0.53	0.74	1.5	1.9	4.4
26	0.5	0.48	0.53	0.74	0.9	1.2	2.7
27	0.8	0.48	0.53	0.74	1.5	1.9	4.4
28	0.9	0.48	0.53	0.74	1.7	2.2	4.9
29	0.9	0.48	0.53	0.74	1.7	2.2	4.9
30	0.2	0.48	0.53	0.74	0.4	0.5	1.1
31	0.5	0.48	0.53	0.74	0.9	1.2	2.7
32	1.1	0.48	0.53	0.74	2.0	2.7	6.0
33	0.4	0.48	0.53	0.74	0.7	1.0	2.2
34	0.8	0.48	0.53	0.74	1.5	1.9	4.4
35	1.6	0.48	0.53	0.74	2.9	3.9	8.7
36	1.0	0.48	0.53	0.74	1.8	2.4	5.5
37	0.5	0.48	0.53	0.74	0.9	1.2	2.7
38	1.0	0.48	0.53	0.74	1.8	2.4	5.5
39	0.3	0.48	0.53	0.74	0.6	0.7	1.8
40	0.3	0.48	0.53	0.74	0.6	0.7	1.8
41	0.3	0.48	0.53	0.74	0.6	0.7	1.8
42	0.4	0.48	0.53	0.74	0.7	1.0	2.2
43	1.0	0.48	0.53	0.74	1.8	2.4	5.5
44	0.4	0.48	0.53	0.74	0.7	1.0	2.2
45	0.4	0.48	0.53	0.74	0.7	1.0	2.2
46	0.8	0.48	0.53	0.74	1.5	1.9	4.4
47	2.9	0.48	0.53	0.74	5.3	7.0	16
48	0.5	0.48	0.53	0.74	0.9	1.2	2.7
49	0.3	0.48	0.53	0.74	0.6	0.7	1.8
50	0.3	0.48	0.53	0.74	0.6	0.7	1.8
51	1.0	0.48	0.53	0.74	1.8	2.4	5.5
52	1.3	0.48	0.53	0.74	2.4	3.1	7.1
53	0.8	0.48	0.53	0.74	1.5	1.9	4.4
54	0.2	0.48	0.53	0.74	0.4	0.5	1.1
55	0.4	0.48	0.53	0.74	0.7	1.0	2.2
56	17.4	0.48	0.53	0.74	32	42	95



Revised 21 JULY 2003
14 JULY 2003

BAUGHMAN COMPANY P.A.
ENGINEERING, SURVEYING, & PLANNING
318-282-7271 • 315 ELLIS • WICHITA, KANSAS 67211