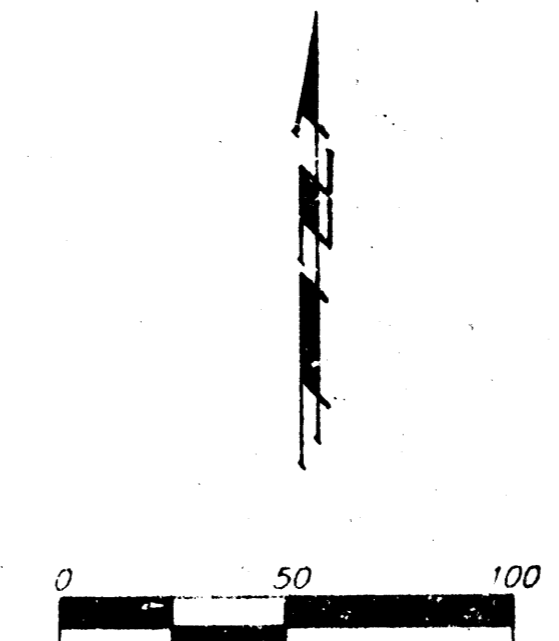
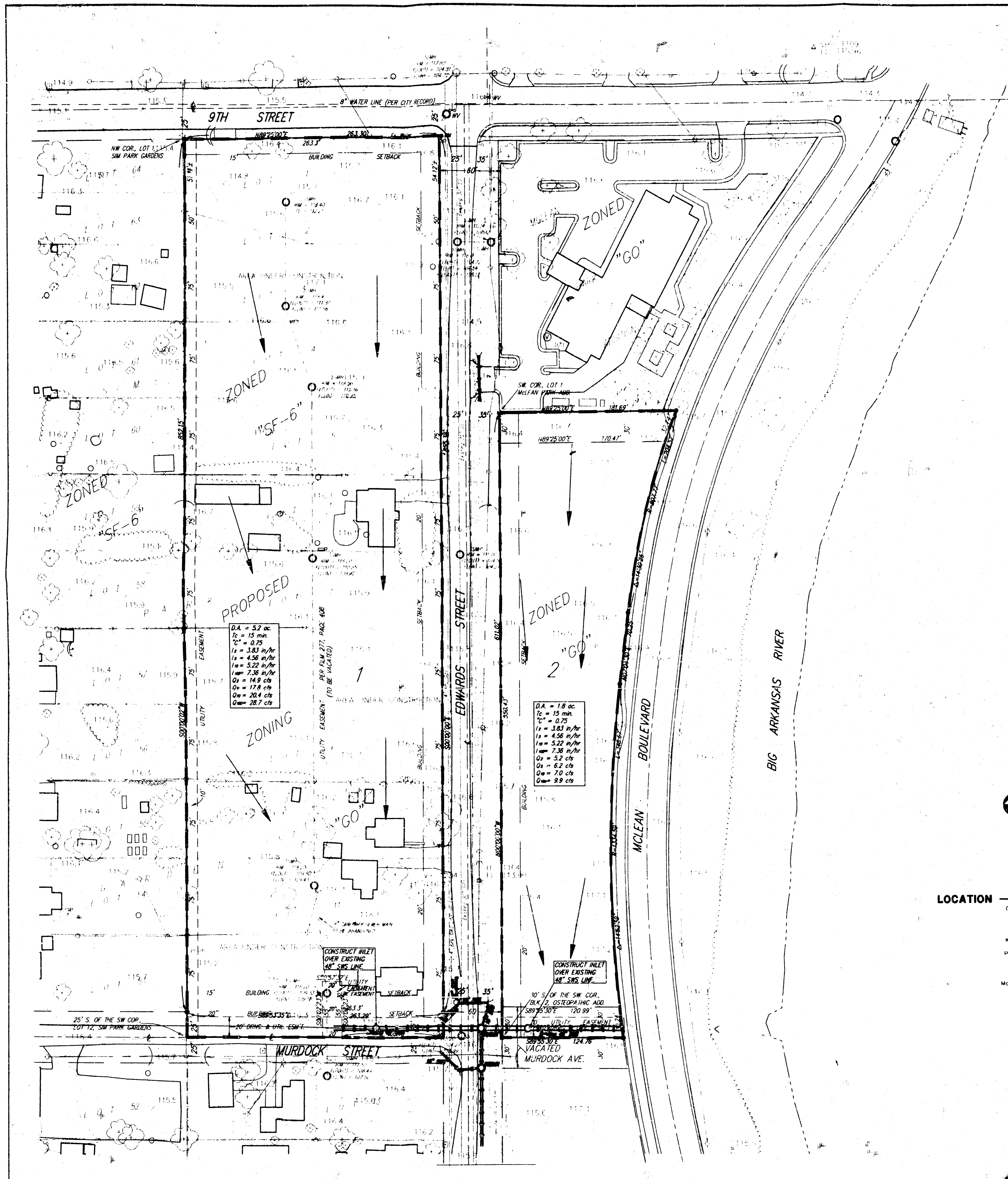


# DRAINAGE PLAN

## RIVERSIDE HEALTH SYSTEMS 3RD ADDITION

WICHITA, SEDGWICK COUNTY, KANSAS



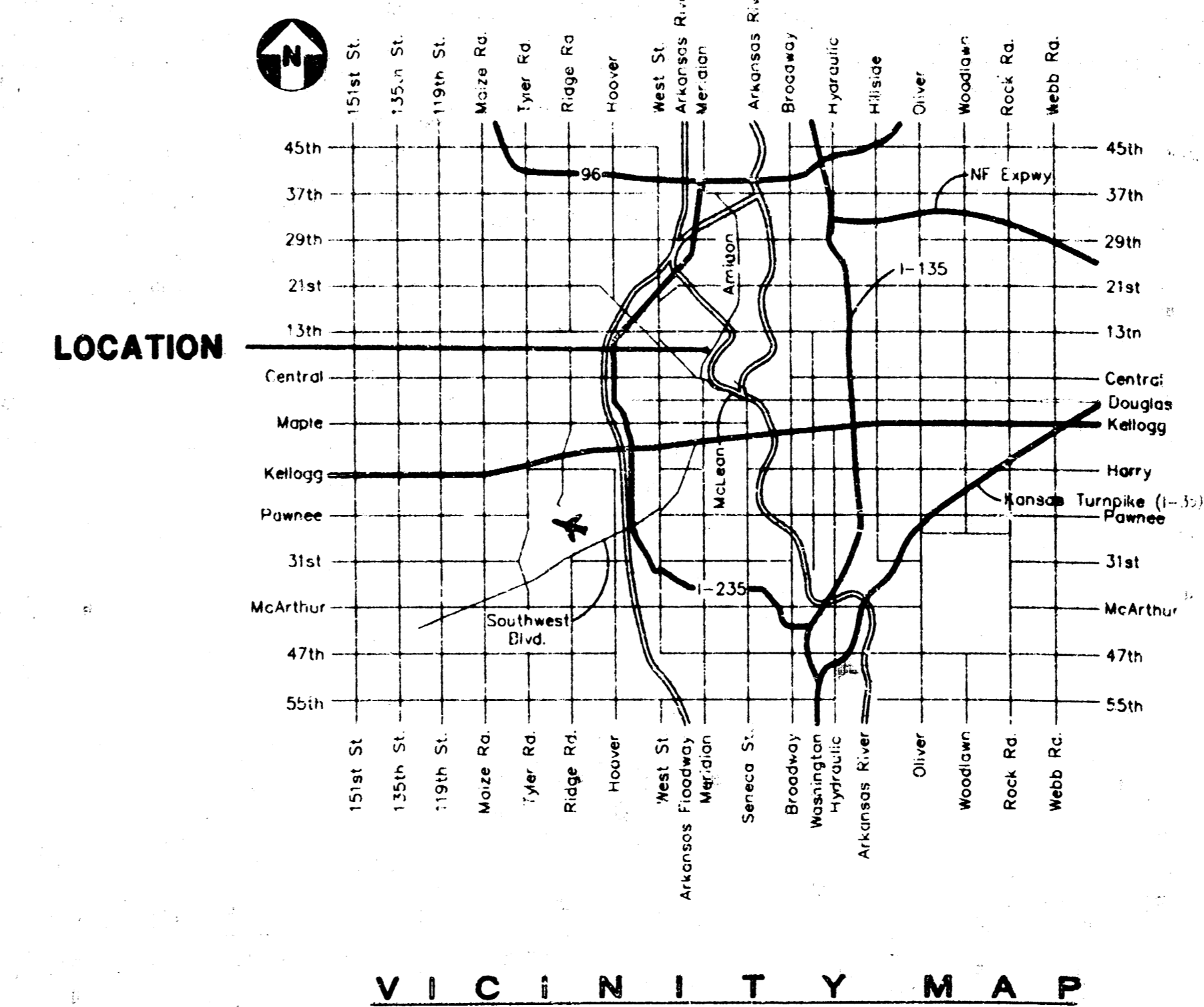
● = #4 Baughman Rebar Set  
 SANITARY SEWER LINES NOT FIELD VERIFIED  
 WATER LINE NOT FIELD VERIFIED  
 EASEMENT TO BE VACATED

- SAN SEWER
- WATER LINE
- ELEC. LINE
- GAS LINE
- SAN SEWER MANHOLE
- LIGHT POLE
- ELEC. BOX
- POWER POLE
- WATER VALVE
- W.M. WATER METER
- S.O.B. MAIL BOX
- STORM WATER SEWER MANHOLE

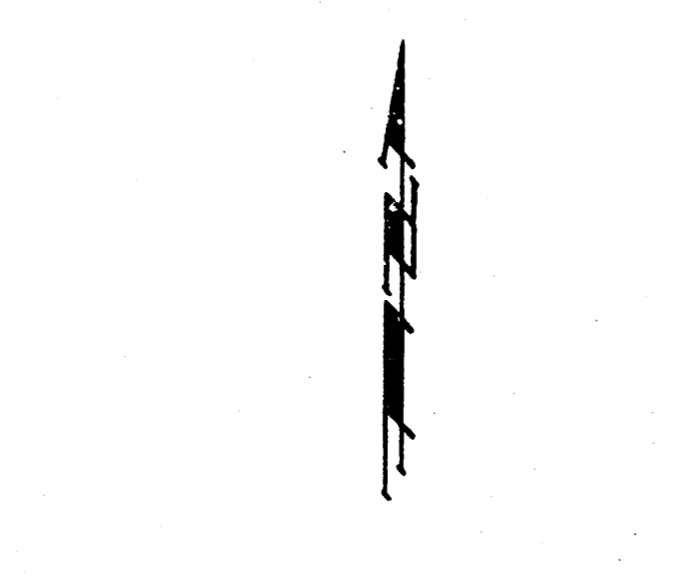
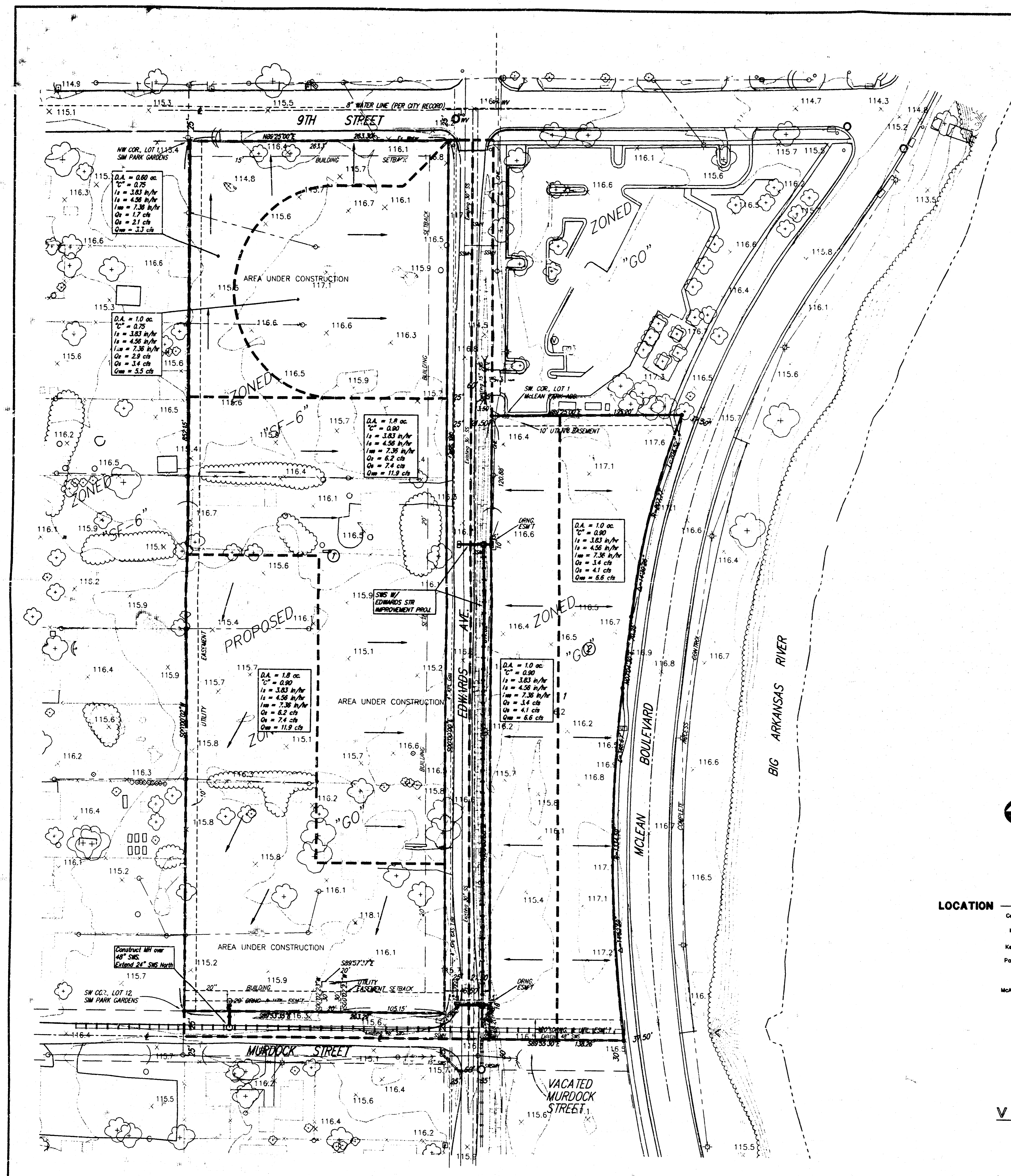
**LEGAL DESCRIPTION**  
 LOTS 1, 2, 3, 4, 5, 6, 7, 8, 9, 10, 11, AND 12, SW PARK GARDENS, WICHITA, SEDGWICK COUNTY, KANSAS, TOGETHER WITH BLOCK 2, OSTEOPTIC ADDITION, WICHITA, SEDGWICK COUNTY, KANSAS, TOGETHER WITH THE NORTH HALF OF VACATED MURDOCK STREET, LYING SOUTH OF AND ADJACENT TO SAID BLOCK 2, TOGETHER WITH THAT PART OF THE S1/4 OF SEC. 13, TWP. 27-S, R. 1-W LYING BETWEEN THE NORTH LINE OF SAID BLOCK 2 AND THE SOUTH LINE OF MCLEAN PARK ADDITION, WICHITA, KANSAS, AND WEST OF THE WEST LINE OF MCLEAN BLVD. AND EAST OF THE EAST LINE OF EDWARDS AVE.

**OWNER**  
 RIVERSIDE HEALTH SYSTEMS  
 ATTN: ROBERT DIXON  
 2622 W. CENTRAL  
 WICHITA, KANSAS 67203  
 (316) 946-5000

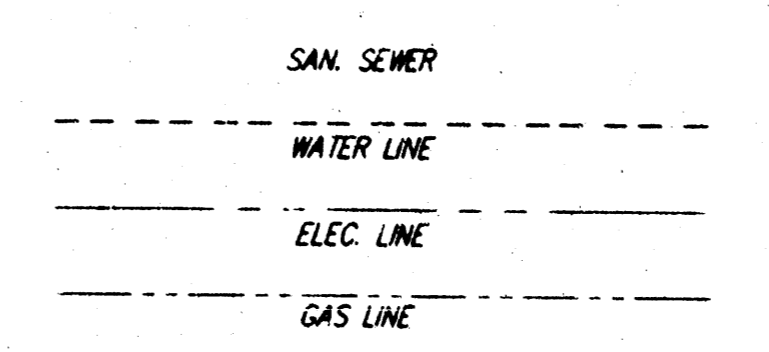
**BENCHMARK**  
 "1" LOCATED ON TOP OF CURB ON WEST SIDE OF MCLEAN BLVD. AND SOUTH RIGHT-OF-WAY LINE OF VACATED MURDOCK. ELEVATION = 115.91 CITY DATUM



**DRAINAGE PLAN**  
**RIVERSIDE HEALTH**  
**SYSTEMS 3RD ADDITION**  
**WICHITA, SEDGWICK COUNTY, KANSAS**



• = #4 Baughman Rebar Set  
 SANITARY SEWER LINES NOT FIELD VERIFIED  
 WATER LINE NOT FIELD VERIFIED  
 EASEMENT TO BE VACATED



- SMH = SAN. SEWER MANHOLE  
 \* = LIGHT POLE  
 □ = ELEC. BOX  
 ○ = POWER POLE  
 W.V. = WATER VALVE  
 M.V. = WATER METER  
 ○ = SIGN  
 □ = MAIL BOX  
 ○ = STORM WATER SEWER MANHOLE

**LEGAL DESCRIPTION**

LOTS 1, 2, 3, 4, 5, 6, 7 & 9, 10, 11, AND 12, SIM PARK GARDENS, WICHITA, SEDGWICK COUNTY, KANSAS, TOGETHER WITH BLOCK 2, COSTOPHATIC ADDITION, WICHITA, SEDGWICK COUNTY, KANSAS, TOGETHER WITH THE NORTH HALF OF VACATED MURDOCK STREET, LYING SOUTH OF AND ADJACENT TO SAID BLOCK 2, TOGETHER WITH THAT PART OF THE SE 1/4 OF SEC. 13, TWP. 27-S, R-1-W LYING BETWEEN THE N 1/2 W LINE OF SAID BLOCK 2 AND THE SOUTH LINE OF MCLEAN PARK ADDITION, WICHITA, KANSAS AND WEST OF THE WEST LINE OF MCLEAN BLVD. AND EAST OF THE EAST LINE OF EDWARDS AVE.

**OWNER**

RIVERSIDE HEALTH SYSTEMS  
 ATTN: ROBERT DIXON  
 2522 W. CENTRAL  
 WICHITA, KANSAS 67203  
 (316) 946-5000

**BENCHMARK**

\* □ LOCATED ON TOP OF CURB ON WEST SIDE OF MCLEAN BLVD. AND SOUTH RIGHT-OF-WAY LINE OF VACATED MURDOCK. ELEVATION = 115.91 CITY DATUM

