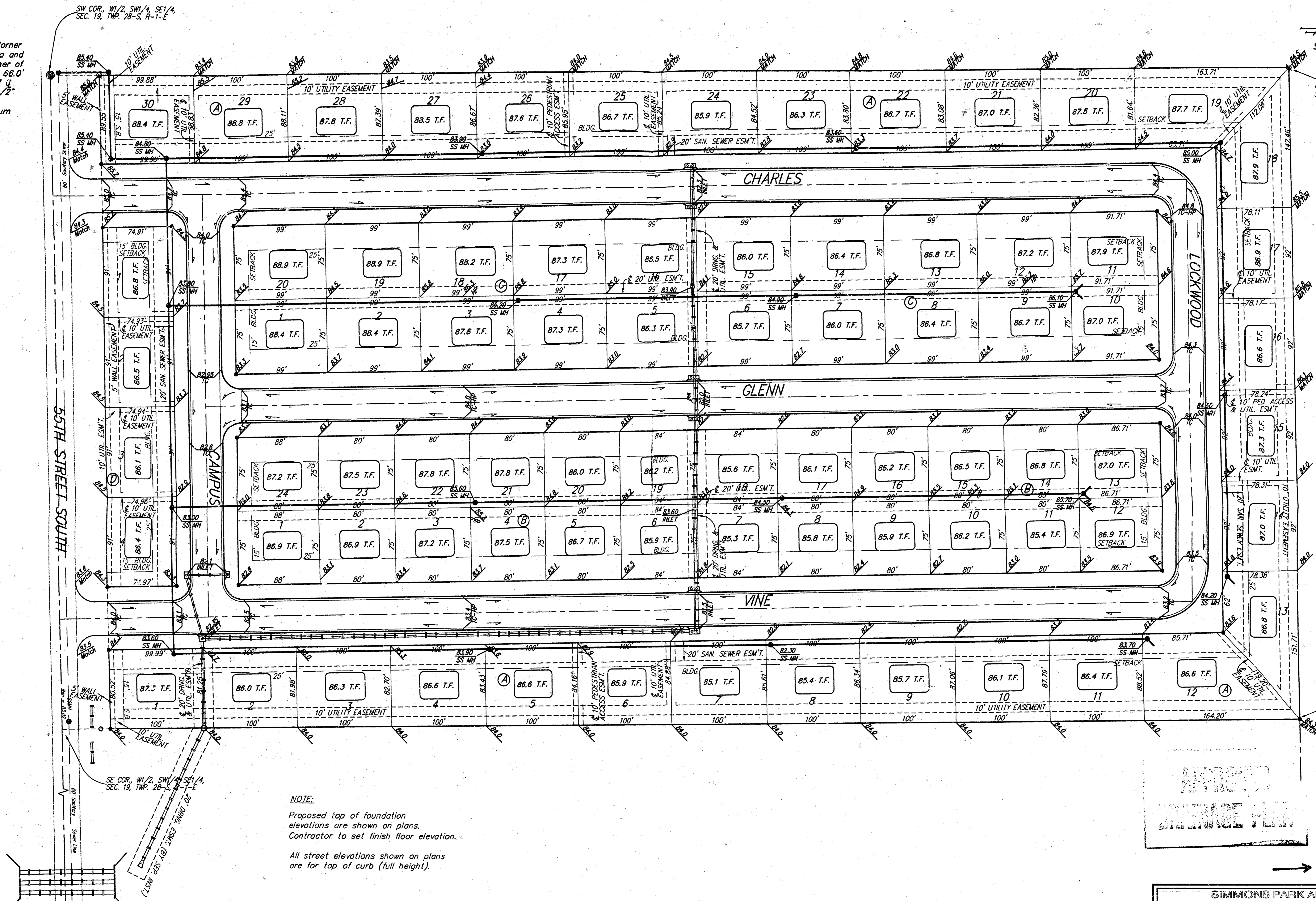


BENCHMARK:  
 C.O.W. Benchmark—NW Corner  
 of intersection of Seneca and  
 55th St. South; SE Corner of  
 traffic signal light base. 66.0'  
 West and 49.4' North of  
 of both. 86.03' NW of 1/2"  
 iron @ Sec. Cor.  
 Elev. = 83.56 City Datum

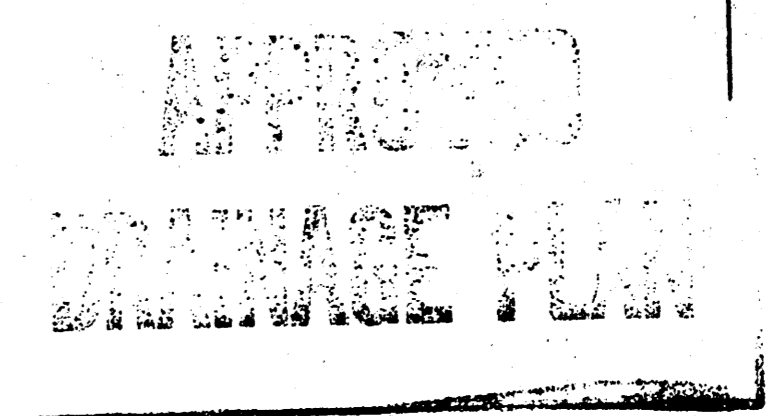
Scale: 1" = 50'  
 \* = Iron

NW COR. 1/2 SW 1/4, SE 1/4,  
 SEC. 19, TWP. 28-S, R-1-E

NE COR. 1/2 SW 1/4, SE 1/4,  
 SEC. 19, TWP. 28-S, R-1-E



SE COR. SE 1/4, SEC. 19,  
 TWP. 28-S, R-1-E



Revised 12-15-99 By TMG Per NEW  
 Revised 12-3-99 By TMG Per NEW

**SIMMONS PARK ADDITION**  
**GRADING PLAN**  
 WICHITA, KANSAS

**BAUGHMAN COMPANY P.A.**  
 ENGINEERING, SURVEYING, & PLANNING  
 316-262-7271 • 315 ELLIS • WICHITA, KANSAS 67211

PROJECT NUMBER		SHEET	
		1	
DESIGN	APPROVED	DATE	SCALE
NEW		3-99	NOTED

SIMMONS PARK 98-04-EG-02